

CONTRACT NO. 97294				
FAR ROUTE	SECTION	COUNTY	TOTAL SHEETS	SHEET NO.
312	06-00033-00-PV	MONROE	12	1
FEDERAL AID PROJECT			ILLINOIS	

INDEX OF SHEETS

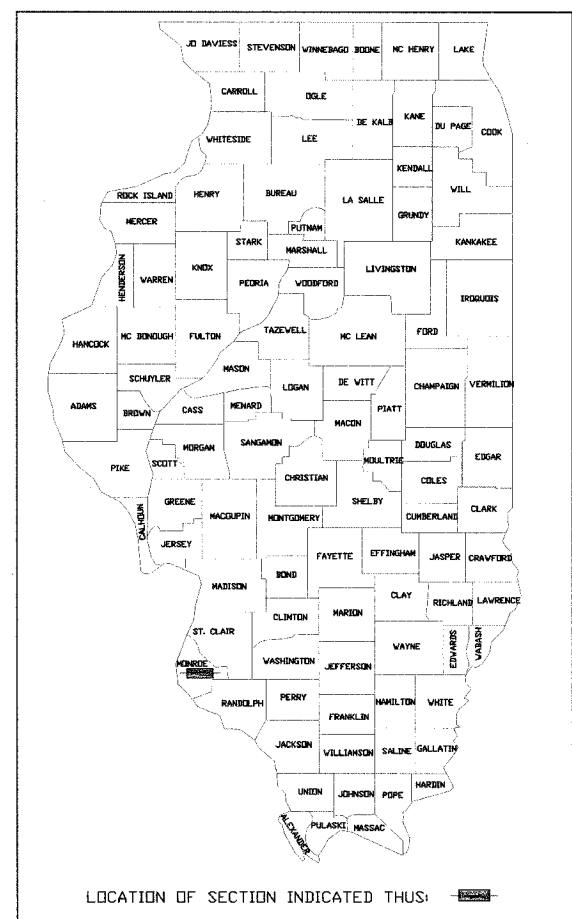
1. COVER SHEET
2. GENERAL NOTES & SUMMARY OF QUANTITIES
3. TYPICAL CROSS SECTIONS
4. SCHEDULES
5. ROADWAY PLAN & PROFILE SHEETS
6. GEOMETRIC PLAN
7. PAVEMENT MARKING PLAN
- 8-10. TRAFFIC SIGNAL PLAN AND DETAILS
- 11-12. CROSS SECTIONS

IDOT STANDARDS

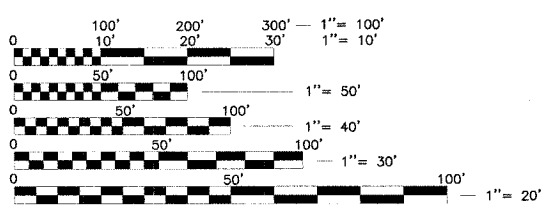
000001-04	701326-02
280001-03	701701-04
420001-06	702001-06
420101-03	780001-01
602301-01	814001-01
602306-01	857001
604006-02	880006
606001-03	886001
701006-02	886006

STATE OF ILLINOIS
DEPARTMENT OF TRANSPORTATION
DIVISION OF HIGHWAYS
**PLANS FOR PROPOSED
FEDERAL AID HIGHWAY**

FAU ROUTE 9320 (NORTH MARKET STREET AT ILLINOIS ROUTE 3)
CITY OF WATERLOO
SECTION 06-00033-00-PV
PROJECT NO. CMM-5011 (232)
MONROE COUNTY
JOB NO. C-98-320-07

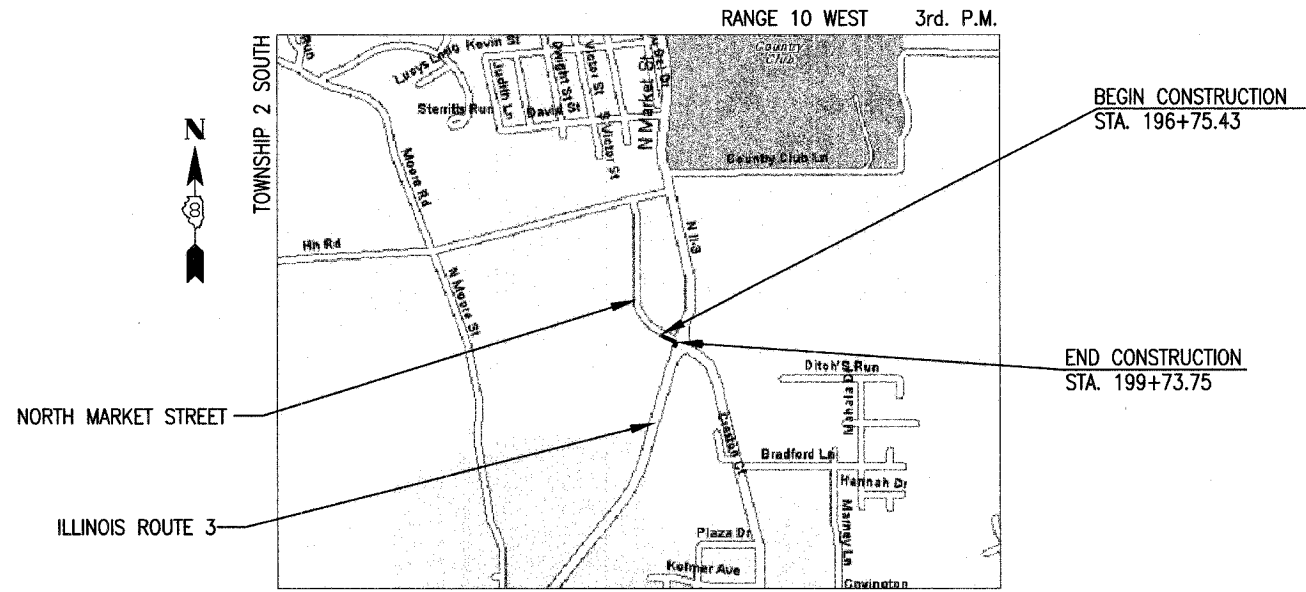


DESIGN DESIGNATION:
FUNCTIONAL CLASSIFICATION = URBAN COLLECTOR
DESIGN TRAFFIC = 10,430 (2016)
DESIGN SPEED = 40 MPH



FULL SIZE PLANS HAVE BEEN PREPARED USING STANDARD ENGINEERING SCALES, REDUCED SIZED PLANS WILL NOT CONFORM TO STANDARD SCALES, IN MAKING MEASUREMENTS ON REDUCED PLANS, THE ABOVE SCALES MAY BE USED.

J.U.L.I.E.
JOINT UTILITY LOCATION INFORMATION FOR EXCAVATION
1-800-892-0123



LOCATION MAP
NOT TO SCALE

LENGTH OF PROJECT
GROSS LENGTH = 298.32' (0.057 MILES)
NET LENGTH = 298.32' (0.057 MILES)

STATE OF ILLINOIS
DEPARTMENT OF TRANSPORTATION
DIVISION OF HIGHWAYS

APPROVED *David S. Kipp* 12/28/2006
CITY OF WATERLOO, MAYOR

PASSED 1-4 2007
Jennifer Oberman
DISTRICT EIGHT ENGINEER OF LOCAL ROADS & STREETS

RELEASING FOR BID
BASED ON LIMITED
REVIEW 1-4 2007
Mary E. Lamic
DEPUTY DIRECTOR OF HIGHWAYS, REGION 5 ENGINEER

**PRINTED BY THE AUTHORITY
OF THE STATE OF ILLINOIS**



Ryan Hunsaker 12/27/06
RYAN HUNSAKER, P.E.
LICENSE NO. 062-057506
DATE
EXPIRES 11-30-07

PREPARED BY:
TWN
THOUVENOT, WADE & MOERCHEN, INC.

G:\SDSKPROJ\060025\dwg\060025-TITLE.dwg 9/14/2006 9:03:39 AM CST