

CONTRACT NO. 97294				
FAR ROUTE	SECTION	COUNTY	TOTAL SHEETS	SHEET NO.
312	06-00033-00-PV	MONROE	12	1
FEDERAL AID PROJECT ILLINOIS				

**INDEX OF SHEETS**

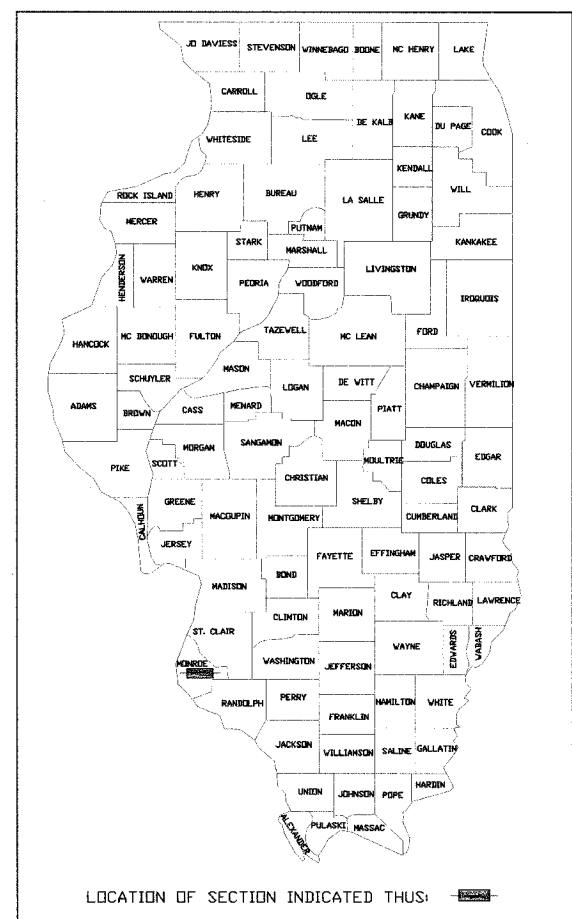
1. COVER SHEET
2. GENERAL NOTES & SUMMARY OF QUANTITIES
3. TYPICAL CROSS SECTIONS
4. SCHEDULES
5. ROADWAY PLAN & PROFILE SHEETS
6. GEOMETRIC PLAN
7. PAVEMENT MARKING PLAN
- 8-10. TRAFFIC SIGNAL PLAN AND DETAILS
- 11-12. CROSS SECTIONS

**IDOT STANDARDS**

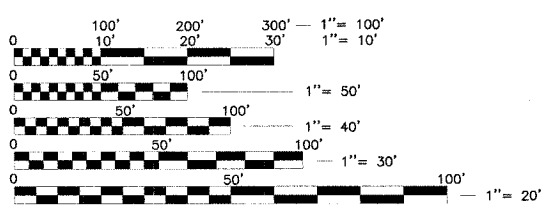
000001-04	701326-02
280001-03	701701-04
420001-06	702001-06
420101-03	780001-01
602301-01	814001-01
602306-01	857001
604006-02	880006
606001-03	886001
701006-02	886006

STATE OF ILLINOIS  
DEPARTMENT OF TRANSPORTATION  
DIVISION OF HIGHWAYS  
**PLANS FOR PROPOSED  
FEDERAL AID HIGHWAY**

**FAU ROUTE 9320 (NORTH MARKET STREET AT ILLINOIS ROUTE 3)  
CITY OF WATERLOO  
SECTION 06-00033-00-PV  
PROJECT NO. CMM-5011 (232)  
MONROE COUNTY  
JOB NO. C-98-320-07**

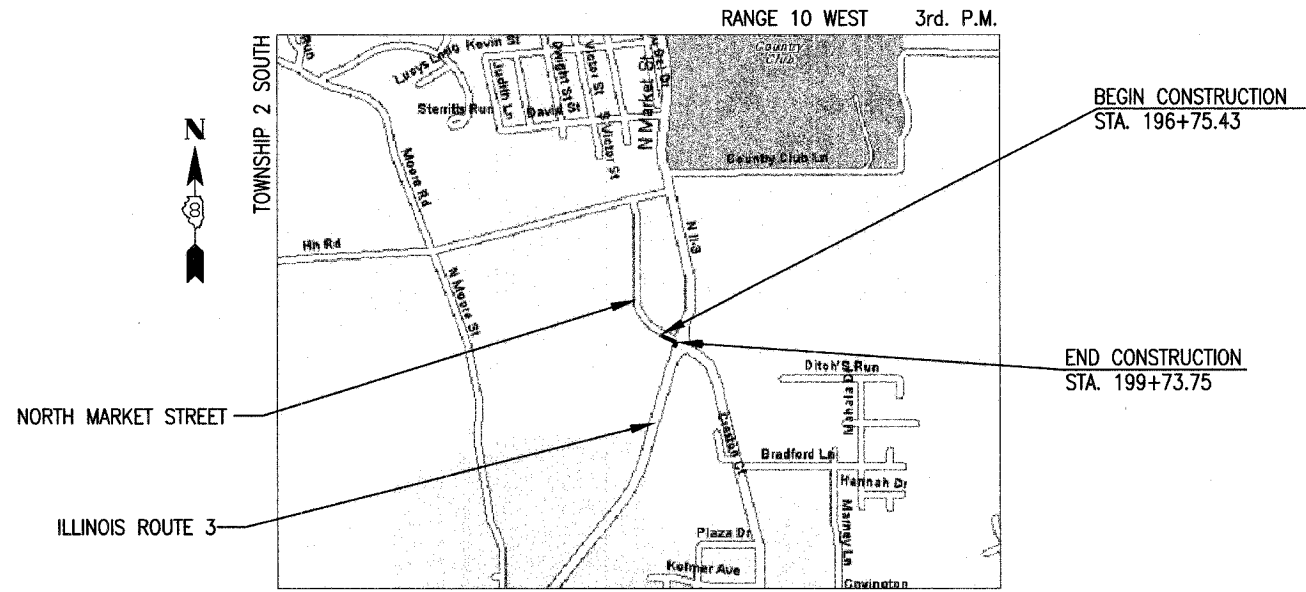


DESIGN DESIGNATION:  
FUNCTIONAL CLASSIFICATION = URBAN COLLECTOR  
DESIGN TRAFFIC = 10,430 (2016)  
DESIGN SPEED = 40 MPH



FULL SIZE PLANS HAVE BEEN PREPARED USING STANDARD ENGINEERING SCALES, REDUCED SIZED PLANS WILL NOT CONFORM TO STANDARD SCALES, IN MAKING MEASUREMENTS ON REDUCED PLANS, THE ABOVE SCALES MAY BE USED.

J.U.L.I.E.  
JOINT UTILITY LOCATION INFORMATION FOR EXCAVATION  
1-800-892-0123



**LOCATION MAP**  
NOT TO SCALE

LENGTH OF PROJECT  
GROSS LENGTH = 298.32' (0.057 MILES)  
NET LENGTH = 298.32' (0.057 MILES)

STATE OF ILLINOIS  
DEPARTMENT OF TRANSPORTATION  
DIVISION OF HIGHWAYS

APPROVED *Tom S. Kipp* 12/28/2006  
CITY OF WATERLOO, MAYOR

PASSED *1-4* 2007  
DISTRICT EIGHT ENGINEER OF LOCAL ROADS & STREETS

RELEASING FOR BID  
BASED ON LIMITED  
REVIEW *1-4* 2007  
DEPUTY DIRECTOR OF HIGHWAYS, REGION 5 ENGINEER

**PRINTED BY THE AUTHORITY  
OF THE STATE OF ILLINOIS**



*Ryan Hunsaker* 12/27/06  
RYAN HUNSAKER, P.E.  
LICENSE NO. 062-057506  
DATE  
EXPIRES 11-30-07

PREPARED BY:  
**TWN**  
THOUVENOT, WADE & MOERCHEN, INC.

G:\SDSKPROJ\060025\dwg\060025-TITLE.dwg 9/14/2006 9:03:39 AM CST

GENERAL NOTES

ANY REFERENCE TO A STANDARD IN THESE PLANS SHALL BE INTERPRETED TO MEAN THE EDITION, AS INDICATED BY THE SUB-NUMBER LISTED IN THE INDEX OF SHEETS, OR THE COPY OF THE STANDARD INCLUDED IN THESE PLANS. FOR CODED PAY ITEM DESCRIPTIONS, INCIDENTAL ITEMS, AND ALL MATERIAL SPECIFICATIONS, PLEASE REFER TO THE LATEST EDITION OF THE IDOT STANDARD SPECIFICATIONS FOR ROAD AND BRIDGE CONSTRUCTION.

ANY FACILITIES OR APPURTENANCES, WHICH ARE THE PROPERTY OF ANY PUBLIC UTILITY LOCATED WITHIN THE LIMITS OF CONSTRUCTION, SHALL BE RELOCATED OR ADJUSTED BY THEIR RESPECTIVE OWNERS. THE CONTRACTOR SHALL NOTIFY AND COOPERATE WITH THE OWNERS OF ANY SUCH FACILITY IN THEIR REMOVAL AND ADJUST HIS/HER OPERATIONS, IN ORDER THAT, THE UTILITY'S OPERATIONS AND THE CONSTRUCTION OF THIS PROJECT MAY PROGRESS IN A REASONABLE MANNER.

THE TYPE, SIZE, AND LOCATION OF UTILITIES, AS DELINEATED IN THESE TOPOGRAPHIC LAND SURVEY DOCUMENTS AND/OR CIVIL ENGINEERING DESIGN DOCUMENTS, HAVE BEEN DETERMINED BY REVIEW OF AVAILABLE EXISTING "AS-BUILT" OR RECORD DRAWINGS, FIELD SURVEY OF J.U.L.I.E. MARKED UTILITIES, OR FIELD SURVEY OF ABOVE GROUND SURFACE UTILITY FEATURES. THE OWNER AND ENGINEER HAVE NOT UNDERTAKEN SUBSURFACE EXPLORATORY INVESTIGATIONS TO CONFIRM OR VERIFY THE UTILITIES SHOWN ON THESE DOCUMENTS; THEREFORE THEIR EXACT LOCATION, SIZE, AND FUNCTION MUST BE CONSIDERED APPROXIMATE AND MUST BE FIELD CONFIRMED BY THE CONTRACTOR.

THE ENGINEER AND OWNER FURTHER DO NOT WARRANT THAT ALL UTILITIES HAVE BEEN ILLUSTRATED ON THESE DOCUMENTS. THE CONTRACTOR IS SOLELY RESPONSIBLE FOR CONTACTING J.U.L.I.E. FOR FIELD VERIFICATION OF ALL UTILITIES ON THE SITE PRIOR TO COMMENCEMENT OF CONSTRUCTION. IF THE CONTRACTOR DETERMINES THAT SUBSTANTIAL DISCREPANCY EXISTS BETWEEN FIELD VERIFIED UTILITIES AND THESE PLANS (WHICH WOULD SIGNIFICANTLY AFFECT THE FUNCTION, COST, OR PERFORMANCE OF THE PROJECT), THE CONTRACTOR SHALL IMMEDIATELY CONTACT THE ENGINEER FOR CLARIFICATION AND PROJECT DIRECTION.

WHERE SECTION OR SUBSECTION MONUMENTS ARE ENCOUNTERED, THE ENGINEER SHALL BE NOTIFIED BEFORE SUCH MONUMENTS ARE REMOVED. THE CONTRACTOR SHALL PROTECT AND CAREFULLY PRESERVE ALL PROPERTY MARKERS AND MONUMENTS UNTIL THE OWNER AND AN AUTHORIZED SURVEYOR OR AGENT, HAVE WITNESSED OR OTHERWISE REFERENCED THEIR LOCATION.

THE CONTRACTOR SHALL CONFINE HIS/HER OPERATIONS TO THE AREA LOCATED WITHIN THE CONSTRUCTION LIMIT LINES, AS SHOWN ON THE PLANS. ANY AREA DISTURBED BEYOND THESE LIMITS SHALL BE RESTORED TO ITS ORIGINAL CONDITION AT THE CONTRACTOR'S EXPENSE.

ALL EXISTING ROADWAY FEATURES (SUCH AS CULVERTS, HEADWALLS, RIPRAP, CURB, PAVEMENT, FENCING, ETC.) LOCATED WITHIN THE CONSTRUCTION LIMITS ARE TO REMAIN UNLESS NOTED OTHERWISE ON THE PLANS.

THE CONTRACTOR SHALL REMOVE, MAINTAIN IN A TEMPORARY LOCATION, AND PERMANENTLY RESET ALL MAILBOXES, TRAFFIC SIGNS, AND DELINEATORS WHICH INTERFERE WITH CONSTRUCTION OPERATIONS IN ACCORDANCE WITH ARTICLES 107.20 AND 107.25 OF THE "STANDARD SPECIFICATIONS FOR ROAD AND BRIDGE CONSTRUCTION". THE CONTRACTOR SHALL PROTECT AND CAREFULLY PRESERVE ALL PROPERTY MARKERS AND MONUMENTS UNTIL THE OWNER AND AN AUTHORIZED SURVEYOR, OR AGENT, HAS WITNESSED, OR OTHERWISE, REFERENCED THEIR LOCATION.

ALL CLEANING OF LOGS, SHRUBS, BUSHES, SAPLINGS, GRASS, WEEDS, OR OTHER VEGETATION HAVING A STUMP DIAMETER OF 6 INCHES OR LESS WILL NOT BE MEASURED FOR PAYMENT.

THE SAW CUTTING OF EXISTING PAVEMENT, NECESSARY FOR ITS REMOVAL, SHALL BE CONSIDERED INCLUDED IN THE COST OF THE ITEM FOR WHICH THE SAW CUT IS BEING MADE. THE REMOVAL OF ALL EXISTING CONCRETE AND/OR BITUMINOUS ENTRANCE PAVEMENT HAS BEEN INCLUDED IN THE DRIVEWAY PAVEMENT REMOVAL QUANTITY. THE REMOVAL OF ALL EXISTING AGGREGATE AND/OR OIL & CHIP ENTRANCE PAVEMENT SHALL BE INCLUDED IN THE EARTH EXCAVATION QUANTITY AND SHALL NOT BE MEASURED, NOR PAID FOR, AS A SEPARATE REMOVAL ITEM. ALL ROADWAY PAVEMENT REMOVAL HAS BEEN INCLUDED IN THE BITUMINOUS SURFACE REMOVAL - BUTT JOINT QUANTITY. REMOVAL OF ANY EXISTING PIPE UNDERDRAINS SHALL BE CONSIDERED INCLUDED IN THE EARTH EXCAVATION QUANTITY.

ALL TEMPORARY AND PERMANENT EROSION CONTROL DEVICES SHALL BE LOCATED AS SHOWN ON THE PLANS. ALL MAINTENANCE OF EROSION CONTROL DEVICES SHALL BE CONSIDERED INCLUDED IN THE EARTH EXCAVATION QUANTITY.

IT IS THE CONTRACTOR'S RESPONSIBILITY TO INSURE THAT ALL EROSION AND DISPLACED SEDIMENT DOES NOT MIGRATE OFF SITE. IF UNEXPECTED EROSION OR SEDIMENTATION OCCURS (OR IF THE EROSION PLAN STRUCTURES BECOME DAMAGED), THE CONTRACTOR SHALL PROVIDE SUFFICIENT MEASURES TO REPAIR, REPLACE, OR INSTALL EROSION CONTROL STRUCTURES TO INSURE OFF-SITE DAMAGE DOES NOT OCCUR. ANY SEDIMENT OR EROSION DAMAGE WHICH OCCURS OFF-SITE SHALL BE REPAIRED BY THE CONTRACTOR AT HIS/HER EXPENSE.

ALL EARTH SURFACES DISTURBED BY CONSTRUCTION, OR AS DIRECTED BY THE ENGINEER, SHALL BE SODDED. THE FOLLOWING QUANTITIES HAVE BEEN INCLUDED IN THE PAY ITEM "SODDING" AND NO ADDITIONAL COMPENSATION WILL BE ALLOWED:

- 5.0 LBS. TEMPORARY EROSION CONTROL SEEDING
- 2.4 LBS. NITROGEN FERTILIZER NUTRIENT
- 2.4 LBS. PHOSPHORUS FERTILIZER NUTRIENT
- 2.4 LBS. POTASSIUM FERTILIZER NUTRIENT

ALL MATERIALS, SUCH AS FRAMES AND GRATES AND STORM SEWER PIPE SCHEDULED FOR REMOVAL (THAT ARE CONSIDERED TO BE SUITABLE FOR FUTURE USE), SHALL BE SALVAGED AND STOCKPILED AS DIRECTED BY THE ENGINEER. ALL OTHER MATERIALS SCHEDULED FOR REMOVAL, BUT NOT SALVAGED, SHALL BE DISPOSED OF BY THE CONTRACTOR AT HIS/HER EXPENSE.

ALL STORM SEWER AND CULVERT PIPE TO BE REMOVED (WHICH THE ENGINEER DEEMS FIT FOR RE-USE) SHALL BE SALVAGED IN ACCORDANCE WITH ARTICLES 501.02 OF THE IDOT STANDARD SPECIFICATIONS FOR ROAD AND BRIDGE CONSTRUCTION. ALL OTHER STORM SEWER AND CULVERT PIPE SHALL BE DISPOSED OF IN ACCORDANCE WITH ARTICLE 202.03 OF THE STANDARD SPECIFICATIONS. REMOVAL OF ANY EXISTING CULVERT FLARED END SECTIONS SHALL BE CONSIDERED INCLUDED IN THE PIPE CULVERT BEING REMOVED.

ALL TRAFFIC CONTROL (INCLUDING, BUT NOT LIMITED TO WORK ZONE, TEMPORARY, AND PERMANENT) SHALL BE FURNISHED, INSTALLED, MAINTAINED, RELOCATED, AND/OR REMOVED IN ACCORDANCE WITH SECTION 701 OF THE LATEST EDITION OF THE IDOT STANDARD SPECIFICATIONS FOR ROAD AND BRIDGE CONSTRUCTION AND THE LATEST EDITION OF THE MANUAL ON UNIFORM TRAFFIC CONTROL DEVICES.

ALL EXCAVATION ADJACENT TO THE EDGE OF PAVEMENT SHALL BE PROTECTED WITH EXTENDED LEG BARRICADES WITH APPROPRIATE LIGHTING.

NO OVERNIGHT LANE CLOSURES SHALL BE ALLOWED ON NORTH MARKET STREET. IF THE CONTRACTOR CHOOSES TO DEVIATE FROM THESE RESTRICTIONS, THE CONTRACTOR MUST CONTACT THE CITY OF WATERLOO AND ACQUIRE APPROVAL.

TRAFFIC CONTROL SIGNS SHALL BE 48" FLUORESCENT ORANGE.

THE CONTRACTOR IS RESPONSIBLE FOR CONTACTING THE CITY OF WATERLOO AT LEAST FORTY-EIGHT (48) HOURS IN ADVANCE PRIOR TO COMMENCEMENT OF ANY CONSTRUCTION ACTIVITIES OR WORK REQUIRING INSPECTION OR APPROVAL BY THE AFFECTED UNITS OF GOVERNMENT.

SUMMARY OF QUANTITIES

CODE NUMBER	ITEM	UNIT	TOTAL QUANTITY	N. MARKET STREET QUANTITY	
20200100	EARTH EXCAVATION	CU YD	197	197	--
20800150	TRENCH BACKFILL	CU YD	4.6	4.6	--
25200100	SODDING	SQ YD	215	215	--
28000250	TEMPORARY EROSION CONTROL SEEDING	POUND	5	5	--
28000500	INLET AND PIPE PROTECTION	EACH	3	3	--
35100300	AGGREGATE BASE COURSE, TYPE A 4"	SQ YD	471	471	--
42000101	PORTLAND CEMENT CONCRETE PAVEMENT 6" (JOINTED)	SQ YD	341	341	--
44000200	DRIVEWAY PAVEMENT REMOVAL	SQ YD	6	6	--
44000500	COMBINATION CURB AND GUTTER REMOVAL	FOOT	326	326	--
44004250	PAVED SHOULDER REMOVAL	SQ YD	39	39	--
48203029	HOT-MIX ASPHALT SHOULDERS, 8"	SQ YD	43	43	--
55000050	STORM SEWERS, CLASS A, TYPE 1 1/2"	FOOT	20	20	--
55100500	STORM SEWER REMOVAL 12"	FOOT	4	4	--
60235100	INLETS, TYPE A, TYPE 3 FRAME AND GRATE	EACH	2	2	--
60240200	INLETS, TYPE B, TYPE 3 FRAME AND GRATE	EACH	1	1	--
60500060	REMOVING INLETS	EACH	1	1	--
60600500	COMBINATION CONCRETE CURB AND GUTTER, TYPE B-6.24	FOOT	293	293	--
67100100	MOBILIZATION	L SUM	1	1	--
70100500	TRAFFIC CONTROL AND PROTECTION, STANDARD 701.326	L SUM	1	1	--
70102835	TRAFFIC CONTROL AND PROTECTION, STANDARD 701.701	L SUM	1	1	--
72000100	SIGN PANEL - TYPE 1	SQ FT	4.0	4.0	--
72800100	TELESCOPING STEEL SIGN SUPPORT	FOOT	14	14	--
78001100*	PAINT PAVEMENT MARKING - LETTERS AND SYMBOLS	SQ FT	46.8	46.8	--
78001110*	PAINT PAVEMENT MARKING - LINE 4"	FOOT	198	198	--
78001140*	PAINT PAVEMENT MARKING - LINE 8"	FOOT	70	70	--
78001150*	PAINT PAVEMENT MARKING - LINE 12"	FOOT	36	36	--
78300100	PAVEMENT MARKING REMOVAL	SQ FT	13.0	13.0	--
80300100*	LOCATING UNDERGROUND CABLE	FOOT	100	100	--
81012300*	CONDUIT IN TRENCH, 1" DIA., PVC	FOOT	74	74	--
81012500*	CONDUIT IN TRENCH, 1 1/2" DIA., PVC	FOOT	161	161	--
81012600*	CONDUIT IN TRENCH, 2" DIA., PVC	FOOT	96	96	--
81012800*	CONDUIT IN TRENCH, 3" DIA., PVC	FOOT	24	24	--
81018500*	CONDUIT PUSHED, 2" DIA., GALVANIZED STEEL	FOOT	32	32	--
81018700*	CONDUIT PUSHED, 3" DIA., GALVANIZED STEEL	FOOT	124	124	--
81400700*	HANDHOLE PORTLAND CEMENT CONCRETE	EACH	2	2	--
81900200*	TRENCH AND BACKFILL FOR ELECTRICAL WORK	FOOT	309	309	--
87301305*	ELECTRIC CABLE IN CONDUIT, LEAD-IN, NO. 14 1 PAIR	FOOT	866	866	--
87900200*	DRILL EXISTING HANDHOLE	EACH	2	2	--
88500100*	INDUCTIVE LOOP DETECTOR	EACH	1	1	--
88600100*	DETECTOR LOOP, TYPE 1	FOOT	589	589	--
88502200*	MODIFY EXISTING CONTROLLER	EACH	1	1	--
88502300*	REMOVE ELECTRIC CABLE FROM CONDUIT	FOOT	614	614	--
88502350*	REMOVE AND REINSTALL ELECTRIC CABLE FROM CONDUIT	FOOT	2,013	2,013	--
88502380*	REMOVE EXISTING HANDHOLE	EACH	2	2	--

\* DENOTES SPECIALTY ITEM

MIXTURE REQUIREMENTS -- HOT-MIX ASPHALT

MIXTURE USE	SHOULDERS
AC/PG	PG 58-22
RAP % (MAX)	30%
DESIGN AIR Voids	2.0% @ N <sub>des</sub> =30
MIX COMPOSITION (GRADATION MIXTURE)	
FRICITION AGG	BIT. AGG. MIX.

THOUVENOT, WADE & MOERCHEN, INC.  
ENGINEERS • SURVEYORS • PLANNERS



☐ CORPORATE OFFICE  
4940 OLD COLLINSVILLE RD.  
SWANSEA, ILLINOIS 62226  
TEL (618) 624-4488  
FAX (618) 624-6688  
corp@twm-inc.com

☒ WATERLOO OFFICE  
113 SOUTH MAIN STREET  
WATERLOO, ILLINOIS 62298  
TEL (618) 939-5050  
FAX (618) 939-3938  
waterloo@twm-inc.com

☐ ST. LOUIS OFFICE  
1001 CRAIG ROAD, SUITE 260  
ST. LOUIS, MISSOURI 63146  
TEL (314) 236-5052  
FAX (314) 872-2194  
stlouis@twm-inc.com

PROFESSIONAL REGISTRATIONS LICENSE NO.  
ILLINOIS PROFESSIONAL DESIGN FIRM 184-00120  
PROFESSIONAL ENGINEERING CORP. 62-035370  
PROFESSIONAL STRUCTURAL ENGR. CORP. 81-005202  
ILLINOIS PROF. LAND SURVEYING CORP. 048-000019  
MISSOURI PROFESSIONAL ENGR. CORP. NC 001528  
MISSOURI LAND SURVEYING CORP. NC 000346

SEAL

Signature: \_\_\_\_\_  
Signature Date: \_\_\_\_\_  
Expiration Date: \_\_\_\_\_

STATEMENT OF RESPONSIBILITY  
I hereby confirm that the document herein to be authenticated by my seal is restricted to this sheet, and I hereby disclaim any responsibility for all other drawings, specifications, estimates, reports or other documents or instruments relating to or intended to be utilized for any other part of the architecture, engineering or survey project.

GENERAL NOTES AND SUMMARY OF QUANTITIES

PROJECT: NORTH MARKET STREET WIDENING AT ILLINOIS ROUTE 3 CITY OF WATERLOO MONROE COUNTY, ILLINOIS

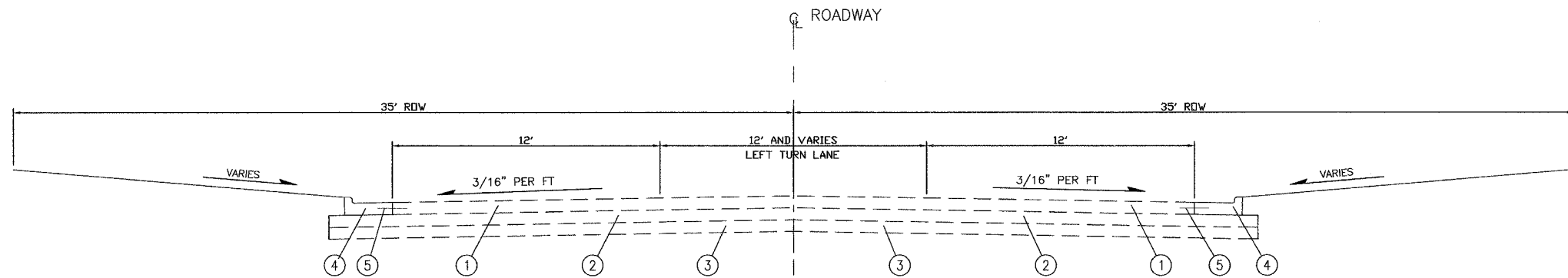
TITLE:

CREATED ON: 9/14/2006

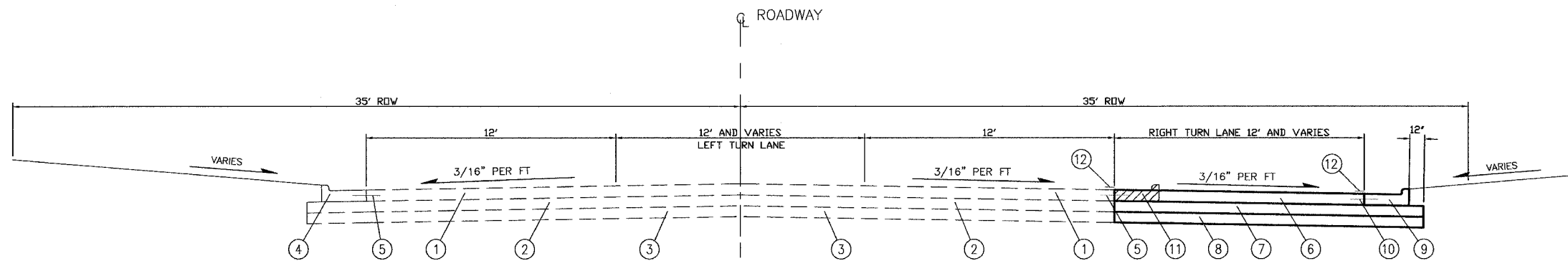
REV	DATE	DESCRIPTION
▲		
▲		
▲		

DRAWN BY: ALH SHEET  
DESIGNED BY: SJK 2  
CHECKED BY:  
APPROVED BY:  
PROJECT NUMBER: T12060025 OF 12 SHEETS

☐ ISSUED FOR REVIEW ☐ RECORD DRAWING



**NORTH MARKET STREET  
EXISTING TYPICAL SECTION**  
STA: 196+75.43 TO STA: 199+73.75



**NORTH MARKET STREET  
PROPOSED TYPICAL SECTION**  
STA: 196+75.43 TO STA: 197+75.43  
RIGHT TURN LANE VARIES FROM 0' TO 12'  
STA: 197+75.43 TO STA: 199+73.75  
RIGHT TURN LANE WIDTH 12'

**LEGEND**

- |   |  |
|---|--|
| ① EXISTING PORTLAND CEMENT CONCRETE PAVEMENT, 6"          | ⑥ PROPOSED PORTLAND CEMENT CONCRETE PAVEMENT, 6" (JOINTED)                                   |
| ② EXISTING AGGREGATE BASE, 4"                             | ⑦ PROPOSED AGGREGATE BASE COURSE, TYPE A, 4"   |
| ③ EXISTING COMPACTED SUBGRADE                             | ⑧ PROPOSED COMPACTED SUBGRADE  |
| ④ EXISTING COMBINATION CONC. CURB AND GUTTER, TYPE B-6.24 | ⑨ PROPOSED COMBINATION CONC. CURB AND GUTTER, TYPE B-6.24                                    |
| ⑤ EXISTING TIE BAR  | ⑩ PROPOSED TIE BAR #6 BAR, 30" LONG (MIN.) AT 30" CENTERS (INCLUDED W/ PCC PVT 6" (JOINTED)) |
|   | ⑪ PROPOSED COMBINATION CURB AND GUTTER REMOVAL   |
|   | ⑫ PROPOSED PAINT PAVEMENT MARKING  |

**THOUVENOT,  
WADE &  
MOERCHEN, INC.**  
ENGINEERS • SURVEYORS • PLANNERS



CORPORATE OFFICE  
4940 OLD COLLINSVILLE RD.  
SWANSEA, ILLINOIS 62226  
TEL (618) 624-4488  
FAX (618) 624-6688  
corp@twm-inc.com

WATERLOO OFFICE  
113 SOUTH MAIN STREET  
WATERLOO, ILLINOIS 62298  
TEL (618) 939-5050  
FAX (618) 939-3938  
waterloo@twm-inc.com

ST. LOUIS OFFICE  
1001 CRAIG ROAD, SUITE 260  
ST. LOUIS, MISSOURI 63146  
TEL (314) 236-5052  
FAX (314) 872-2194  
stlouis@twm-inc.com

PROFESSIONAL REGISTRATIONS	LICENSE NO.
ILLINOIS PROFESSIONAL DESIGN FIRM	194-001220
PROFESSIONAL ENGINEERING CORP.	62-033370
PROFESSIONAL STRUCTURAL ENGR. CORP.	81-005202
ILLINOIS PROF. LAND SURVEYING CORP.	048-000029
MISSOURI PROFESSIONAL ENGR. CORP.	NC 001528
MISSOURI LAND SURVEYING CORP.	NC 000346

SEAL

Signature: \_\_\_\_\_  
Signature Date: \_\_\_\_\_  
Expiration Date: \_\_\_\_\_

**STATEMENT OF RESPONSIBILITY**  
I hereby confirm that the document herein to be authorized by my seal is restricted to this sheet, and I hereby disclaim any responsibility for all other drawings, specifications, estimates, reports or other documents or instruments relating to or intended to be utilized for any other part of the architectural, engineering or survey project.

**TYPICAL SECTIONS**

**NORTH MARKET STREET  
AT ILLINOIS ROUTE 3  
CITY OF WATERLOO  
MONROE COUNTY, ILLINOIS**

REV	DATE	DESCRIPTION

DRAWN BY: ALH	SHEET
DESIGNED BY:	3
CHECKED BY: SJK	
APPROVED BY: RAH	OF 12 SHEETS
PROJECT NUMBER: T12060025	

ISSUED FOR REVIEW  RECORD DRAWING

G:\S\SKP\RLJ\060025.dwg 9/14/2006 9:05:54 AM CST

**THOUVENOT, WADE & MOERCHEN, INC.**  
ENGINEERS • SURVEYORS • PLANNERS



**CORPORATE OFFICE**  
4940 OLD COLLINSVILLE RD.  
SWANSEA, ILLINOIS 62226  
TEL (618) 624-4488  
FAX (618) 624-6688  
corp@twm-inc.com

**WATERLOO OFFICE**  
113 SOUTH MAIN STREET  
WATERLOO, ILLINOIS 62298  
TEL (618) 939-5050  
FAX (618) 939-3938  
waterloo@twm-inc.com

**ST. LOUIS OFFICE**  
1001 CRAIG ROAD, SUITE 260  
ST. LOUIS, MISSOURI 63146  
TEL (314) 236-5052  
FAX (314) 872-2194  
stlouis@twm-inc.com

PROFESSIONAL REGISTRATIONS LICENSE NO.  
ILLINOIS PROFESSIONAL DESIGN FIRM 194-00120  
PROFESSIONAL ENGINEERING CORP. 62-035370  
PROFESSIONAL STRUCTURAL ENGR. CORP. 81-005202  
ILLINOIS PROF. LAND SURVEYING CORP. 048-000029  
MISSOURI PROFESSIONAL ENGR. CORP. NC 001528  
MISSOURI LAND SURVEYING CORP. NC 000346

SEAL

Signature: \_\_\_\_\_  
Signature Date: \_\_\_\_\_  
Expiration Date: \_\_\_\_\_

**STATEMENT OF RESPONSIBILITY**  
I hereby confirm that the document herein to be authorized by my seal is restricted to this sheet, and I hereby disclaim any responsibility for all other drawings, specifications, estimates, reports or other documents or instruments relating to or intended to be utilized for any other part of the architectural, engineering or survey project.

EARTHWORK SCHEDULE					
LOCATION (STATION TO STATION)		EARTH EXCAVATION (CU YD)	EARTH EXCAVATION ADJUSTED FOR SHRINKAGE (CU YD)	EMBANKMENT (CU YD)	EARTHWORK BALANCE WASTE (+), SHORTAGE (-) (CU YD)
N. MARKET ST.					
197+00	TO 199+50	197	148	0	148
TOTAL		197	148	0	148

STORM SEWER AND DRAINAGE STRUCTURES								
LOCATION (STATION TO STATION)		TYPE	STORM SEWERS -12"	STORM SEWER REMOVAL - 12" (FOOT)	REMOVING INLETS (EACH)	INLETS, TYPE A, TYPE 3 F&G (EACH)	INLETS, TYPE B, TYPE 3 F&G (EACH)	TRENCH BACKFILL (CU YD)
N. MARKET ST.								
197+83.75, 31.75'	RT TO 197+90.25, 31.75'	CLASS A, TYPE 1	4			1		0.5
197+83.75, 31.75'	RT							
197+90.25	RT			4	1			
197+90.25	RT, 20.0'	RT						
197+90.25, 31.75'	RT						1	
197+90.25, 19.75'	RT TO 197+90.25, 31.75'	RT CLASS A, TYPE 1	12					3.6
197+90.25, 31.75'	RT TO 197+96.75, 31.75'	RT CLASS A, TYPE 1	4					0.5
197+96.75, 31.75'	RT					1		
TOTAL			20	4	1	2	1	4.6

PAVING SCHEDULE									
LOCATION (STATION TO STATION)		HOT-MIX ASPHALT SHOULDERS 8" (SQ YD)	PAVED SHOULDER REMOVAL (SQ YD)	AGGREGATE BASE C&G TYPE A 4" (SQ YD)	COMB. CONC. C&G TYPE B6.24 (FOOT)	PCC PVMT. 6" (JOINTED) (SQ YD)	COMB. CURB & GUTTER REMOVAL (FOOT)	DRIVEWAY PAVEMENT REMOVAL (SQ YD)	
N. MARKET ST.									
196+75.43	RT TO 197+05.40	RT						6	
196+90.87	RT TO 197+75.43	RT			85				
196+75.43	RT TO 197+75.43	RT		112		72			
196+90.87	RT TO 2157+90.00	LT					326		
197+75.43	RT TO 199+07.87	RT		229		177			
197+75.43	RT TO 199+24.41	RT			149				
199+07.87	RT TO 2158+54.54	LT		130		92			
199+24.41	RT TO 2158+19.82	LT			59				
2157+54.54	LT IL 3 TO 2157+90	LT IL 3					39		
2157+54.54	LT IL 3 TO 2157+82.75	LT	25						
2157+82.75	LT IL 3 TO 2158+23.82	LT	18						
TOTAL			43	39	471	293	341	326	6

INLET & PIPE PROTECTION	
LOCATION (STATION)	NUMBER OF APPLICATION (EACH)
N. MARKET ST.	
197+83.75, 31.75'	1
197+90.25, 31.75'	1
197+96.75, 31.75'	1
TOTAL	3

PAVEMENT MARKING & SIGNAGE SCHEDULE											
LOCATION (STATION TO STATION)		PAINT 4" MARKINGS		PAINT 8" MARKINGS		PAINT 12" MARKINGS		PAINT PAVT. MK. LETTERS & SYMBOLS (SQ FT)	PAVEMENT MARKING REMOVAL (SQ FT)	SIGN PANEL TYPE 1 (SQ FT)	TELES. STL. SIGN SUPPORT (FOOT)
		SKIP-DASH WHITE (FOOT)	SOLID WHITE (FOOT)	SOLID WHITE (FOOT)	SOLID WHITE DIAGONALS (FOOT)	SOLID WHITE STOP BAR (FOOT)					
N. MARKET ST.											
196+98.40	RT TO 197+75.43	RT	20.0								
197+75.43	RT TO 199+53.38	RT		178.0							
197+75.43	RT									4.0	14.0
197+83.42	RT							15.6			
198+45.66	RT							15.6			
199+07.87	RT							15.6			
199+48.38	RT								13.0		
199+53.38	RT TO 199+73.75	RT			20.0						
199+73.75	RT TO 2158+40.68	LT			19.0						
199+53.38	RT TO 2158.40.68	LT			31.0						
199+53.38	RT TO 199+73.75	RT				18.0					
199+60.00	RT						18.0				
TOTAL			20	178	70	18	18	46.8	13.0	4.0	14

SCHEDULES

NORTH MARKET WIDENING  
AT ILLINOIS ROUTE 3  
CITY OF WATERLOO  
MONROE COUNTY, ILLINOIS

TITLE: \_\_\_\_\_ PROJECT: \_\_\_\_\_

CREATED ON	9/14/2006	
REV	DATE	DESCRIPTION
△		
△		
△		

DRAWN BY: ALH SHEET  
DESIGNED BY: \_\_\_\_\_  
CHECKED BY: \_\_\_\_\_  
APPROVED BY: \_\_\_\_\_

4

PROJECT NUMBER T12060025 OF 12 SHEETS  
 ISSUED FOR REVIEW  RECORD DRAWING

G:\S\SKP\PRJ\060025.dwg 9/14/2006 8:26:32 AM CST

**THOUVENOT, WADE & MOERCHEN, INC.**  
ENGINEERS • SURVEYORS • PLANNERS



**CORPORATE OFFICE**  
4940 OLD COLLINSVILLE RD.  
SWANSEA, ILLINOIS 62226  
TEL (618) 624-4488  
FAX (618) 624-6688  
corp@twm-inc.com

**WATERLOO OFFICE**  
113 SOUTH MAIN STREET  
WATERLOO, ILLINOIS 62298  
TEL (618) 939-5050  
FAX (618) 939-3938  
waterloo@twm-inc.com

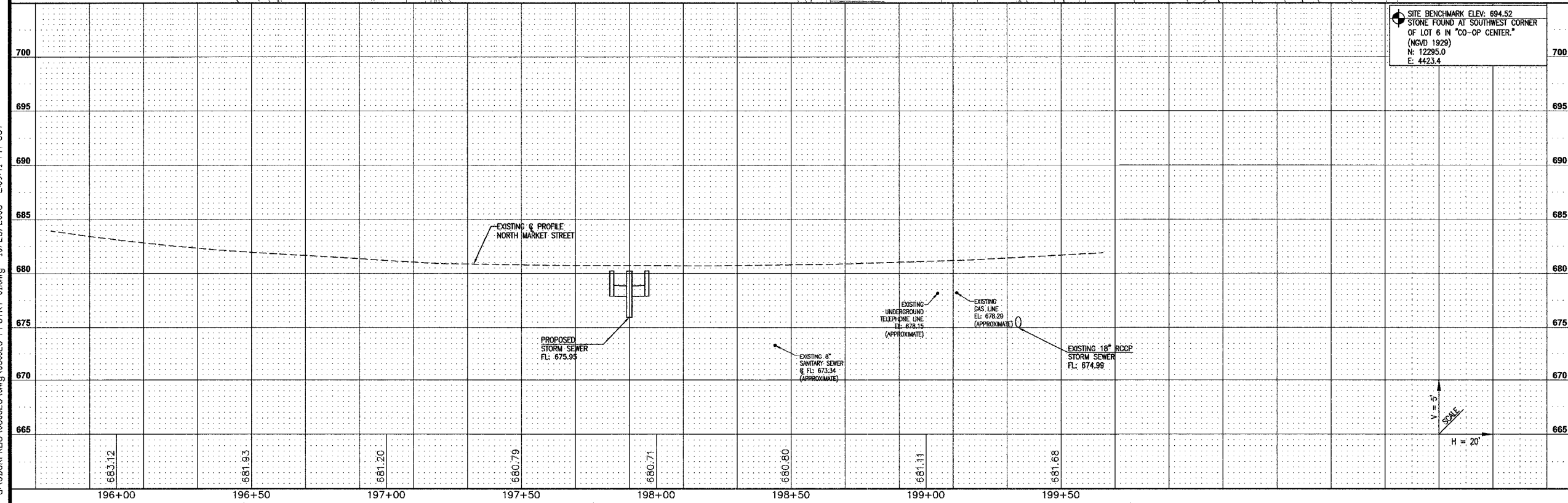
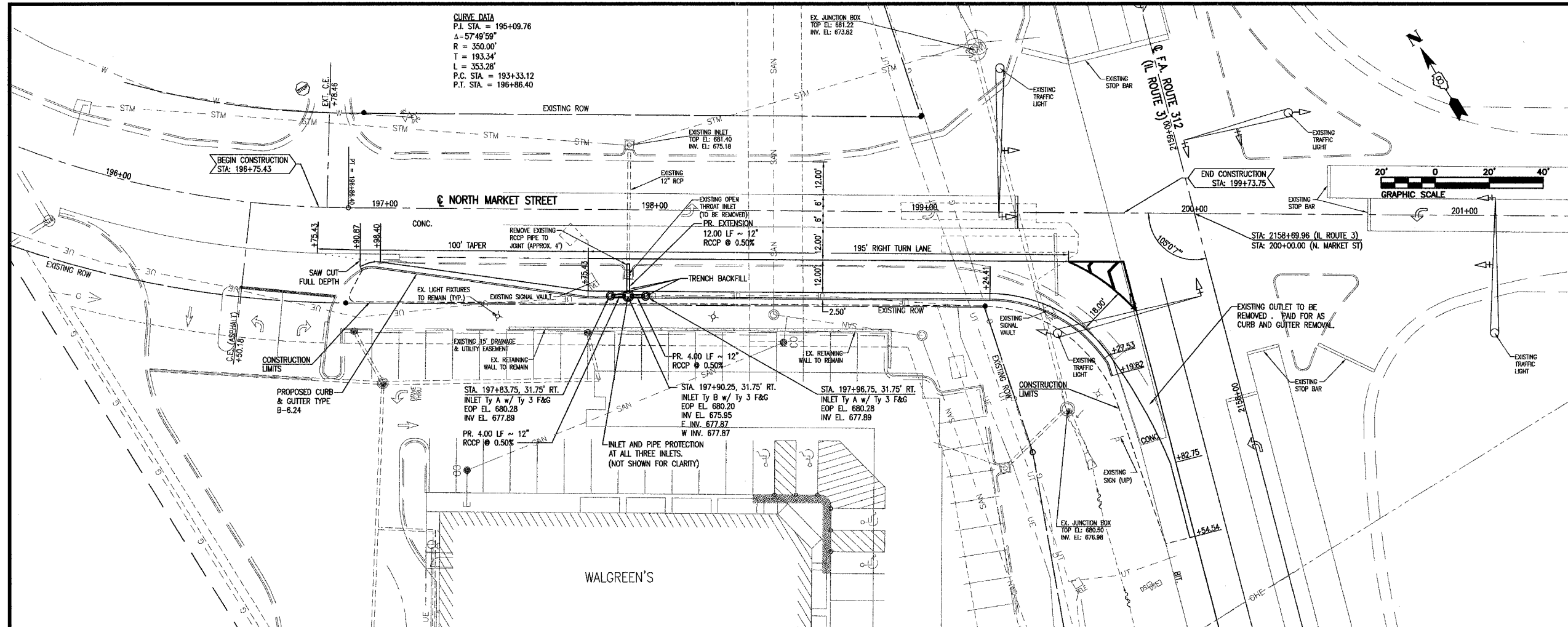
**ST. LOUIS OFFICE**  
1001 CRAIG ROAD, SUITE 260  
ST. LOUIS, MISSOURI 63146  
TEL (314) 236-5052  
FAX (314) 872-2194  
stlouis@twm-inc.com

PROFESSIONAL REGISTRATIONS	LICENSE NO.
ILLINOIS PROFESSIONAL DESIGN FIRM	184-001220
PROFESSIONAL ENGINEERING CORP.	82-035370
PROFESSIONAL STRUCTURAL ENGR. CORP.	81-002302
ILLINOIS PROF. LAND SURVEYING CORP.	048-000029
MISSOURI PROFESSIONAL ENGR. CORP.	NC 001528
MISSOURI LAND SURVEYING CORP.	NC 000346

Signature: \_\_\_\_\_  
Signature Date: \_\_\_\_\_  
Expiration Date: \_\_\_\_\_

**STATEMENT OF RESPONSIBILITY**

I hereby confirm that the document herein to be authenticated by my seal is restricted to this sheet, and I hereby disclaim any responsibility for all other drawings, specifications, estimates, reports or other documents or instruments relating to or intended to be utilized for any other part of the architectural, engineering or survey project.



**PLAN AND PROFILE**  
NORTH MARKET STREET  
AT ILLINOIS ROUTE 3

**PROJECT:**  
NORTH MARKET WIDENING  
AT ILLINOIS ROUTE 3  
CITY OF WATERLOO  
MONROE COUNTY, ILLINOIS

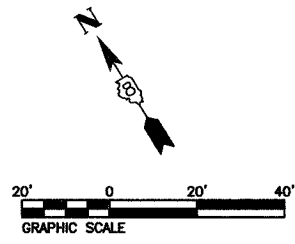
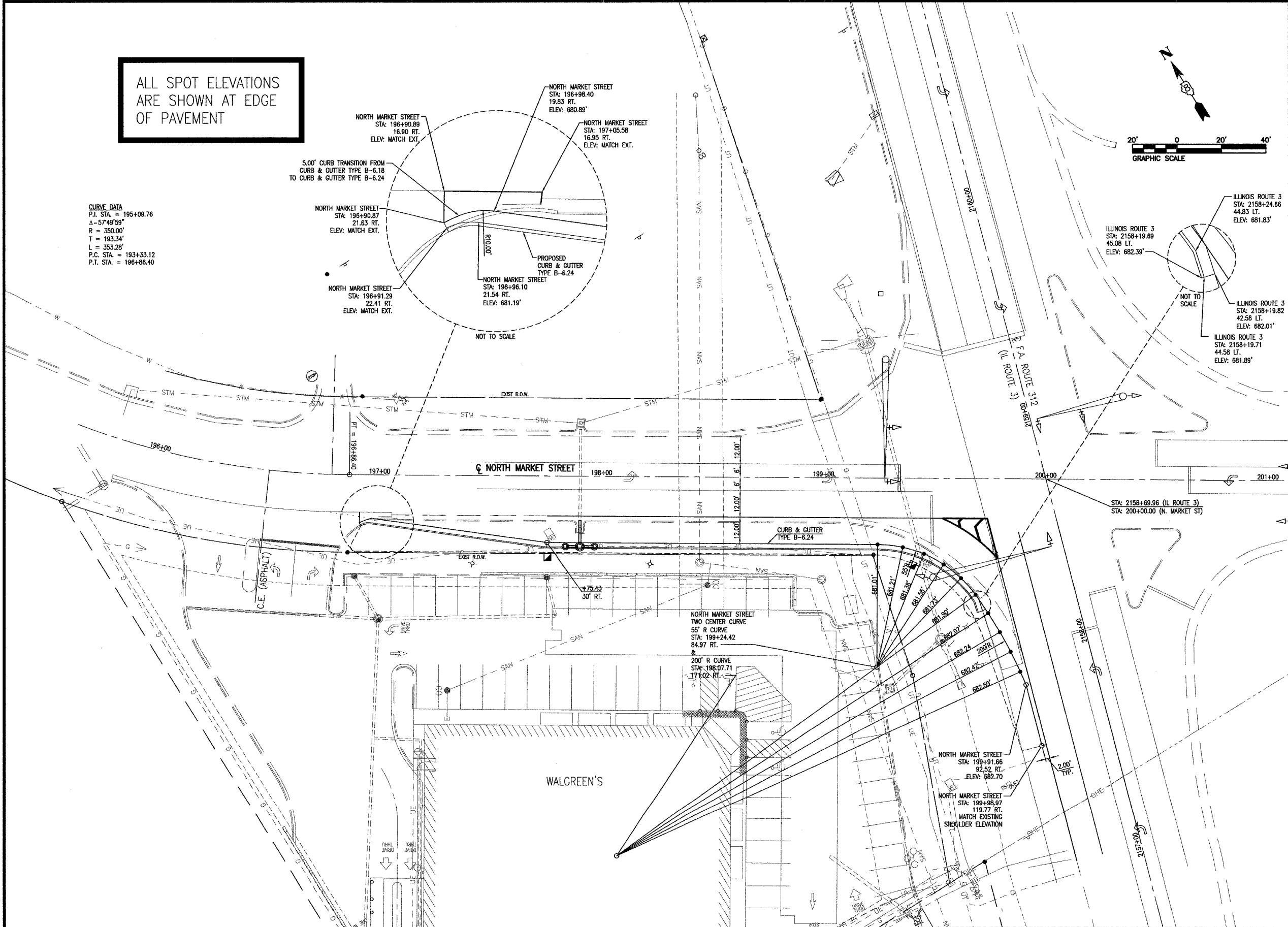
CREATED ON:	9/14/2006
REV. DATE:	DESCRIPTION

DRAWN BY:	ALH	SHEET
DESIGNED BY:		
CHECKED BY:	SJK	<b>5</b>
APPROVED BY:	RAH	
PROJECT NUMBER:	T12060025	OF 12 SHEETS

G:\SDSK\PREL\060025.dwg 10/23/2006 2:09:41 PM CST

ALL SPOT ELEVATIONS ARE SHOWN AT EDGE OF PAVEMENT

**CURVE DATA**  
 P.I. STA. = 195+09.76  
 $\Delta = 57^{\circ}49'59''$   
 R = 350.00'  
 T = 193.34'  
 L = 353.28'  
 P.C. STA. = 193+33.12  
 P.T. STA. = 196+96.40



**THOUVENOT, WADE & MOERCHEN, INC.**  
 ENGINEERS • SURVEYORS • PLANNERS



**CORPORATE OFFICE**  
 4940 OLD COLLINSVILLE RD.  
 SWANSEA, ILLINOIS 62226  
 TEL (618) 624-4488  
 FAX (618) 624-6688  
 corp@twm-inc.com

**WATERLOO OFFICE**  
 113 SOUTH MAIN STREET  
 WATERLOO, ILLINOIS 62298  
 TEL (618) 939-5050  
 FAX (618) 939-3938  
 waterloo@twm-inc.com

**ST. LOUIS OFFICE**  
 1001 CRAIG ROAD, SUITE 260  
 ST. LOUIS, MISSOURI 63146  
 TEL (314) 236-5052  
 FAX (314) 872-2194  
 stlouis@twm-inc.com

PROFESSIONAL REGISTRATIONS LICENSE NO.  
 ILLINOIS PROFESSIONAL DESIGN FIRM 184-00120  
 PROFESSIONAL ENGINEERING CORP. 62-035370  
 PROFESSIONAL STRUCTURAL ENGR. CORP. 61-005202  
 ILLINOIS PROF. LAND SURVEYING CORP. 048-000029  
 MISSOURI PROFESSIONAL ENGR. CORP. NC 001528  
 MISSOURI LAND SURVEYING CORP. NC 000346

SEAL  
 Signature: \_\_\_\_\_  
 Date: \_\_\_\_\_  
 Expiration Date: \_\_\_\_\_

**STATEMENT OF RESPONSIBILITY**  
 I hereby confirm that the document herein to be authorized by my seal is restricted to this sheet, and I hereby disclaim any responsibility for all other drawings, specifications, estimates, reports or other documents or instruments relating to or intended to be utilized for any other part of the architectural, engineering or survey project.

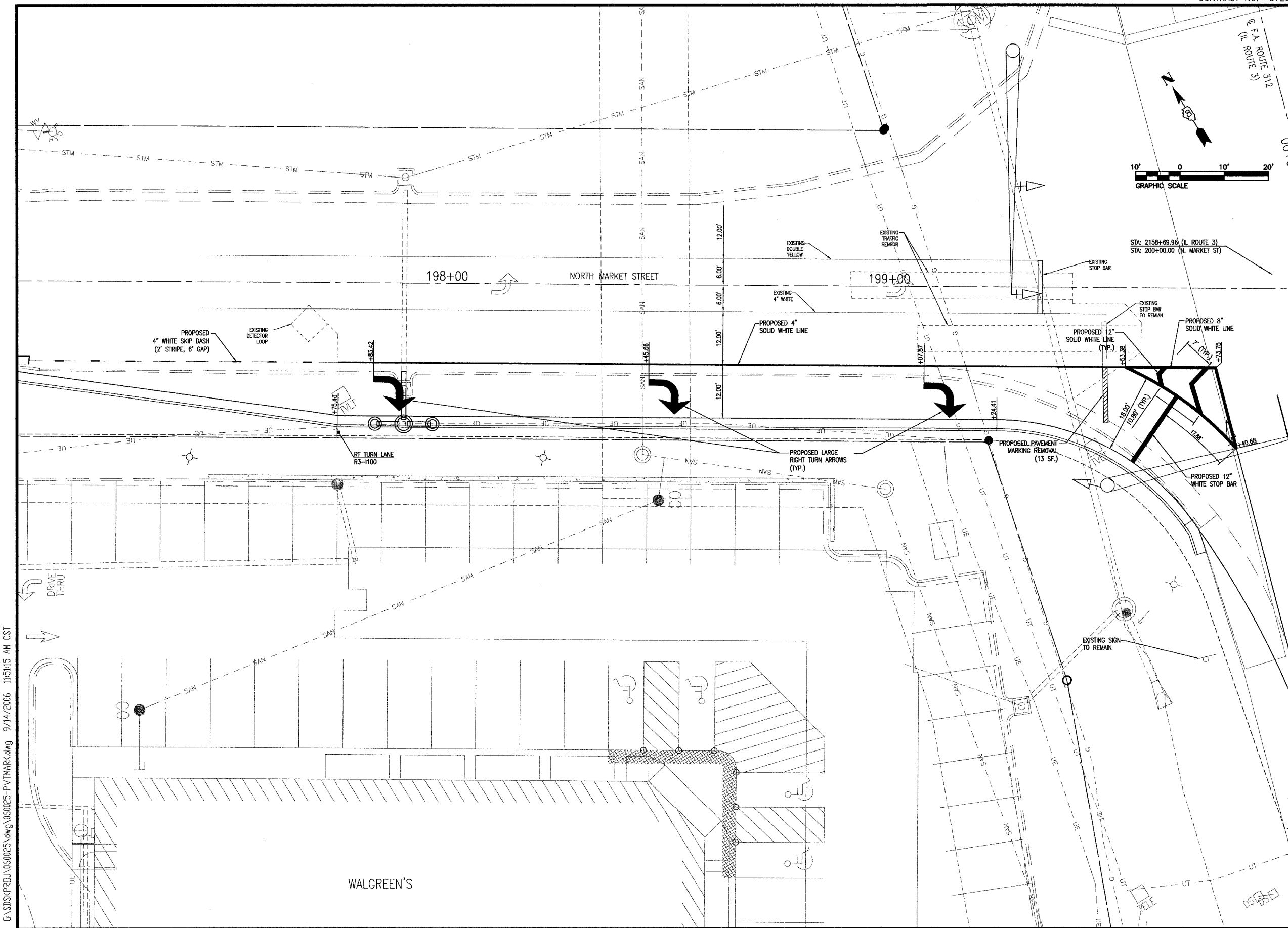
**GEOMETRIC PLAN**  
**NORTH MARKET STREET**  
**AT ILLINOIS ROUTE 3**  
**CITY OF WATERLOO**  
**MONROE COUNTY, ILLINOIS**

CREATED ON:	9/14/2006	
REV	DATE	DESCRIPTION
▲		
▲		
▲		

DRAWN BY:	ALH	SHEET
DESIGNED BY:		
CHECKED BY:	SJK	<b>6</b>
APPROVED BY:		
PROJECT NUMBER:	T12060025	OF 12 SHEETS

ISSUED FOR REVIEW  RECORD DRAWING

G:\S\SK\PRJ\060025.dwg 060025-INT-DTL.dwg 9/14/2006 10:59:52 AM CST



**THOUVENOT, WADE & MOERCHEN, INC.**  
 ENGINEERS • SURVEYORS • PLANNERS



- CORPORATE OFFICE**  
 4940 OLD COLLINSVILLE RD.  
 SWANSEA, ILLINOIS 62226  
 TEL (618) 624-4488  
 FAX (618) 624-6688  
 corp@twm-inc.com
- WATERLOO OFFICE**  
 113 SOUTH MAIN STREET  
 WATERLOO, ILLINOIS 62298  
 TEL (618) 939-5050  
 FAX (618) 939-3938  
 waterloo@twm-inc.com
- ST. LOUIS OFFICE**  
 1001 CRAIG ROAD, SUITE 260  
 ST. LOUIS, MISSOURI 63146  
 TEL (314) 236-5052  
 FAX (314) 872-2194  
 stlouis@twm-inc.com

PROFESSIONAL REGISTRATIONS	LICENSE NO.
ILLINOIS PROFESSIONAL DESIGN FIRM	104-01220
PROFESSIONAL ENGINEERING CORP.	62-035370
PROFESSIONAL STRUCTURAL ENGR. CORP.	81-005002
ILLINOIS PROF. LAND SURVEYING CORP.	048-000029
MISSOURI PROFESSIONAL ENGR. CORP.	NC 001528
MISSOURI LAND SURVEYING CORP.	NC 000346

SEAL

Signature: \_\_\_\_\_  
 Signature Date: \_\_\_\_\_  
 Expiration Date: \_\_\_\_\_

**STATEMENT OF RESPONSIBILITY**  
 I hereby confirm that the document herein to be authorized by my seal is restricted to this sheet, and I hereby disclaim any responsibility for all other drawings, specifications, estimates, reports or other documents or instruments relating to or intended to be utilized for any other part of the architectural, engineering or survey project.

<b>PAVEMENT MARKING PLAN</b>	<b>TITLE:</b>
<b>NORTH MARKET WIDENING AT ILLINOIS ROUTE 3</b>	<b>PROJECT:</b>
<b>CITY OF WATERLOO</b>	
<b>MONROE COUNTY, ILLINOIS</b>	









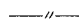
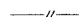
CREATED ON:	9/14/2006	
REV	DATE	DESCRIPTION

DRAWN BY:	ALH	SHEET
DESIGNED BY:		
CHECKED BY:	SJK	<b>7</b>
APPROVED BY:		
PROJECT NUMBER:	T12060025	OF 12 SHEETS
<input type="checkbox"/> ISSUED FOR REVIEW	<input type="checkbox"/> RECORD DRAWING	

G:\S\SKPRJ\060025.dwg 060025-PV\MARK.dwg 9/14/2006 11:51:15 AM CST

WALGREEN'S

**TRAFFIC SIGNALS LEGEND**

- REC REMOVE ELECTRIC CABLE FROM CONDUIT
- RREC REMOVE AND REINSTALL ELECTRIC CABLE FROM CONDUIT
- PVCC POLYVINYL CHLORIDE CONDUIT
- GSC GALVANIZED STEEL CONDUIT
-  EXISTING TRAFFIC SIGNAL MAST ARM
-  EXISTING HANDHOLE
-  EXISTING DOUBLE HANDHOLE
-  EXISTING DETECTOR LOOP
-  EXISTING CONTROLLER
-  EXISTING CONDUIT
-  PROPOSED HANDHOLE
-  PROPOSED DETECTOR LOOP
-  PROPOSED CONDUIT: "T" TRENCH, SIZE SPECIFIED
-  PROPOSED CONDUIT: "P" PUSHED SIZE SPECIFIED

**DETECTOR LOOP REQUIREMENTS AND CALCULATIONS FOR IL ROUTE 3 AND NORTH MARKET STREET**

LOOP	PHASE (Ø)	LOOP SIZE(FT)	REQUIRED # OF TURNS	CALCULATED INDUCTANCE MICROHENRIES (L <sub>4H</sub> )	CALCULATED RESISTANCE OHMS (R)
EB LT CD	3	6'X50' (Q)	3-6-3	837.8	2.77
EB THRU CD	3	6'X50' (Q)	3-6-3	834.1	2.68
EB RT CD	3	6'X50' (Q)	3-6-3	829.9	2.59
EB CCO	3	6'X6'	5	249.1	2.13

THE ABOVE VALUES ARE CALCULATED OF COMBINED LOOP AND LEAD-IN INDUCTANCE AND RESISTANCE. ACTUAL MEASURED VALUES SHOULD BE WITHIN +/- 20% OF THESE VALUES.

**STANDARDS**

- 814001
- 857001
- 880006
- 886001
- 886006

SCHEDULE OF QUANTITIES		TOTAL QUANTITIES
ITEM	UNIT	
LOCATING UNDERGROUND CABLE	FOOT	100
CONDUIT IN TRENCH, 1" DIA., PVC	FOOT	74
CONDUIT IN TRENCH, 1 1/2" DIA., PVC	FOOT	161
CONDUIT IN TRENCH, 2" DIA., PVC	FOOT	96
CONDUIT IN TRENCH, 3" DIA., PVC	FOOT	24
CONDUIT PUSHED, 2" DIA., GALVANIZED STEEL	FOOT	32
CONDUIT PUSHED, 3" DIA., GALVANIZED STEEL	FOOT	124
HANDHOLE PORTLAND CONCRETE CEMENT	EACH	2
TRENCH AND BACKFILL FOR ELECTRICAL WORK	FOOT	309
ELECTRIC CABLE IN CONDUIT, LEAD-IN, NO. 14 1 PAIR	FOOT	866
DRILL EXISTING HANDHOLE	EACH	2
INDUCTIVE LOOP DETECTOR	EACH	1
DETECTOR LOOP, TYPE I	FOOT	589
MODIFY EXISTING CONTROLLER	EACH	1
REMOVE ELECTRIC CABLE FROM CONDUIT	FOOT	614
REMOVE AND REINSTALL ELECTRIC CABLE FROM CONDUIT	FOOT	2,013
REMOVE EXISTING HANDHOLE	EACH	2

**ELECTRICAL GENERAL NOTES**

1. THE LOCATION OF ALL DETECTOR LOOPS SHALL BE APPROVED BY THE ENGINEER BEFORE ANY SLOTS ARE SAWED IN THE PAVEMENT.
2. DETECTOR LOOP LEAD-IN SPLICES SHALL BE MADE IN A HANDHOLE PER ARTICLE 873.03 OF THE STANDARD SPECIFICATIONS FOR ROAD AND BRIDGE CONSTRUCTION AND STANDARD DRAWING 886001. CONDUCTORS SHALL BE SPLICED IN A RIGID MOLD. ROSIN-CORE SOLDER SHALL BE USED.
3. CALL DELAY SHALL NOT FUNCTION WHEN THE RELATED PHASES ARE IN THE GREEN MODE.
4. ALL HANDHOLES SHALL BE CAST-IN-PLACE PORTLAND CEMENT CONCRETE (PER ARTICLE 814.03(B)). THE CAST IN PLACE LEGEND IN THE COVER SHALL BE "TRAFFIC SIGNALS". SLOPE HANDHOLE COVERS TO MATCH PROPOSED GRADE ELEVATIONS.
5. ALL UTILITIES SHALL BE LOCATED IN THE FIELD PRIOR TO ANY ATTEMPT TO CONSTRUCT ANY COMPONENT OF THE VARIOUS TRAFFIC SIGNAL INSTALLATION. AGENCIES KNOWN TO HAVE UNDERGROUND FACILITIES WITHIN THE LIMITS OF THIS IMPROVEMENT ARE THE FOLLOWING: MEMBER OF J.U.L.I.E. PHONE (800) 892-0123 ARE INDICATED BY \* (CALL ONE WEEK BEFORE YOU PLAN TO DIG).
  - \* CITY OF WATERLOO (WATER, SAN, SEWER, ELECTRIC, & GAS)
  - \* CHARTER COMMUNICATIONS (CABLE)      \* HARRISONVILLE TELEPHONE (TELEPHONE)
6. ALL INDUCTIVE LOOP DETECTORS SUPPLIED FOR THIS PROJECT SHALL HAVE THE CAPACITY OF OPERATING WITH BOTH DELAY AND EXTENSION MODES ACTIVE, IF A TIME SETTING IS PROGRAMMED. THEY SHALL BE RACK MOUNTED.
7. CABLE MARKING TAPE SHALL BE INCLUDED WITH THE PAY ITEM "TRENCH AND BACKFILL FOR ELECTRICAL WORK" AND INSTALLED PER ARTICLE 815.03(D) OF THE STANDARD SPECIFICATION FOR ROAD AND BRIDGE CONSTRUCTION.
8. A 1/4" NYLON PULL ROPE SHALL BE FURNISHED AND INSTALLED IN ALL SIGNAL CONDUITS, THIS WORK SHALL BE INCLUDED WITH THE CONDUIT PAY ITEM.

**THOUVENOT, WADE & MOERCHEN, INC.**  
ENGINEERS ♦ SURVEYORS ♦ PLANNERS



- CORPORATE OFFICE**  
4940 OLD COLLINSVILLE RD.  
SWANSEA, ILLINOIS 62226  
TEL (618) 624-4488  
FAX (618) 624-6688  
corp@twm-inc.com
- WATERLOO OFFICE**  
118 EAST THIRD STREET  
WATERLOO, ILLINOIS 62298  
TEL (618) 939-5050  
FAX (618) 939-3938  
waterloo@twm-inc.com
- ST. LOUIS OFFICE**  
1001 CRAIG ROAD, SUITE 260  
ST. LOUIS, MISSOURI 63146  
TEL (314) 236-5052  
FAX (314) 872-2194  
stlouis@twm-inc.com

PROFESSIONAL REGISTRATIONS	LICENSE NO.
ILLINOIS PROFESSIONAL DESIGN FIRM	184-091220
PROFESSIONAL ENGINEERING CORP.	62-035379
PROFESSIONAL STRUCTURAL ENGR. CORP.	81-005202
ILLINOIS PROF. LAND SURVEYING CORP.	048-000029
MISSOURI PROFESSIONAL ENGR. CORP.	NC 001528
MISSOURI LAND SURVEYING CORP.	NC 000346

SEAL

Renewal Date:  
Signature Date:

**STATEMENT OF RESPONSIBILITY**  
I hereby confirm that the document herein to be submittted by my seal is restricted to this sheet, and I hereby disclaim any responsibility for all other drawings, specifications, estimates, reports or other documents or instruments relating to or intended to be utilized for any other part of the architectural, engineering or survey project.

**TRAFFIC SIGNAL PLAN  
SCHEDULE OF QUANTITIES,  
LOOP TABLES & GEN. NOTES**

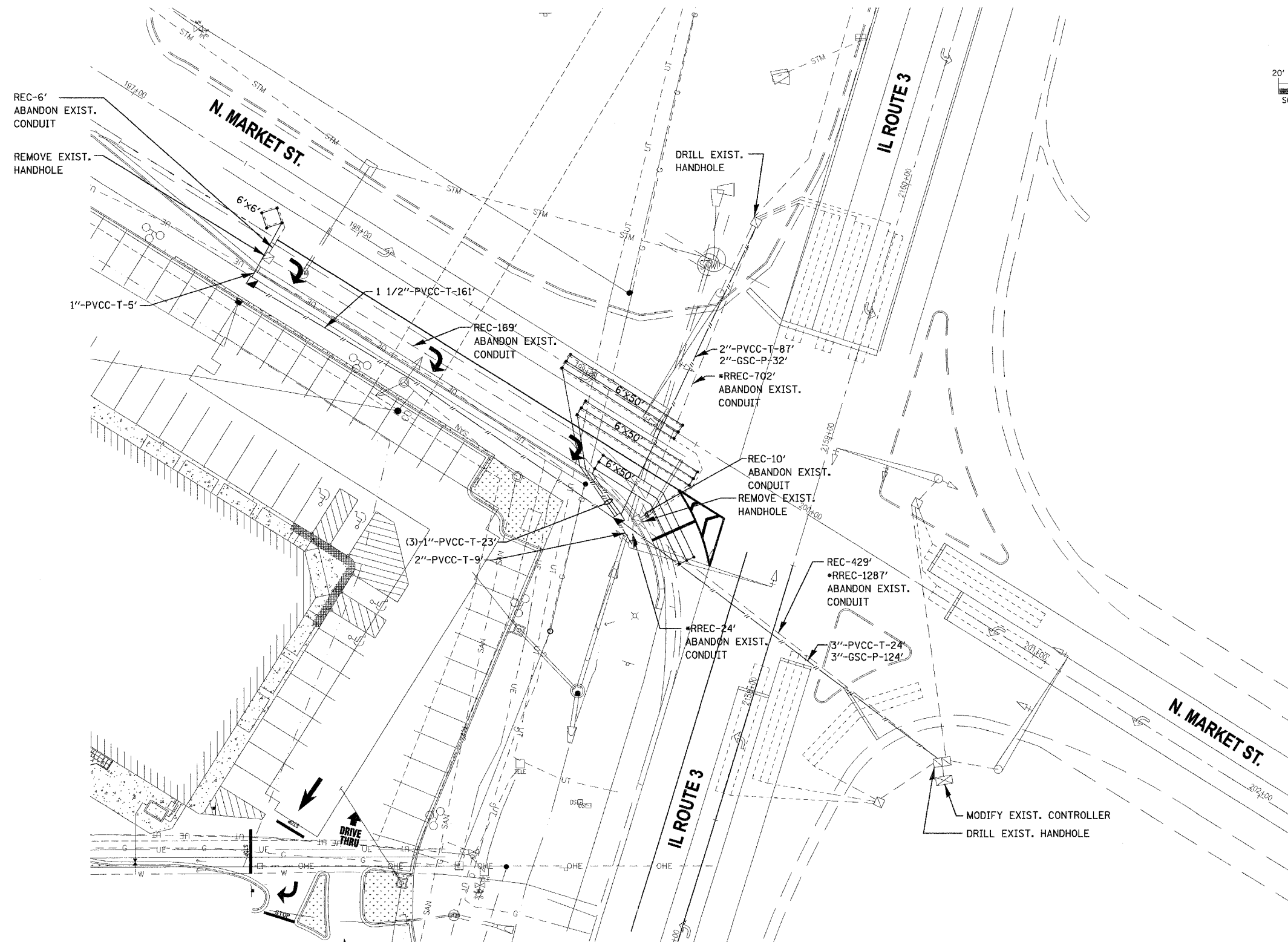
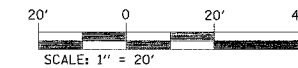
**PROJECT: NORTH MARKET STREET  
AT ILLINOIS ROUTE 3  
CITY OF WATERLOO  
MONROE COUNTY, ILLINOIS**

REV.	DATE	DESCRIPTION
△		
△		

DRAWN BY: JMH	SHEET
DESIGNED BY: JMH	8
CHECKED BY: SJK	
APPROVED BY:	
PROJECT NUMBER: 060025	OF 12 SHEETS

- ISSUED FOR REVIEW       ISSUED FOR BIDDING
- ISSUED FOR CONSTR.       RECORD DRAWING





**THOUVENOT, WADE & MOERCHEN, INC.**  
ENGINEERS ♦ SURVEYORS ♦ PLANNERS



- CORPORATE OFFICE**  
4940 OLD COLLINSVILLE RD.  
SWANSEA, ILLINOIS 62226  
TEL (618) 624-4488  
FAX (618) 624-6688  
corp@twm-inc.com
- WATERLOO OFFICE**  
118 EAST THIRD STREET  
WATERLOO, ILLINOIS 62298  
TEL (618) 939-5050  
FAX (618) 939-3938  
waterloo@twm-inc.com
- ST. LOUIS OFFICE**  
1001 CRAIG ROAD, SUITE 260  
ST. LOUIS, MISSOURI 63146  
TEL (314) 236-5052  
FAX (314) 872-2194  
stlouis@twm-inc.com

PROFESSIONAL REGISTRATIONS	LICENSE NO.
ILLINOIS PROFESSIONAL DESIGN FIRM	184-071220
PROFESSIONAL ENGINEERING CORP.	62-035370
PROFESSIONAL STRUCTURAL ENGR. CORP.	81-005282
ILLINOIS PROF. LAND SURVEYING CORP.	048-000229
MISSOURI PROFESSIONAL FINDER CORP.	NC 001528
MISSOURI LAND SURVEYING CORP.	NC 000346

SEAL

Renewal Date:  
Signature Date:

**STATEMENT OF RESPONSIBILITY**  
I hereby confirm that the document herein to be submittted by my seal is restricted to this sheet, and I hereby disclaim any responsibility for all other drawings, specifications, estimates, reports or other documents or instruments relating to or intended to be utilized for any other part of the architectural, engineering or survey project.

TITLE: **TRAFFIC SIGNAL PLAN  
ELECTRICAL PLAN SHEET**

PROJECT: **NORTH MARKET STREET  
AT ILLINOIS ROUTE 3  
CITY OF WATERLOO  
MONROE COUNTY, ILLINOIS**

REV.	DATE	DESCRIPTION
△		
△		

DRAWN BY: JMI	SHEET
DESIGNED BY: JMI	9
CHECKED BY: SJK	
APPROVED BY:	
PROJECT NUMBER: 060025	
<input checked="" type="checkbox"/> ISSUED FOR REVIEW	<input type="checkbox"/> ISSUED FOR BIDDING
<input type="checkbox"/> ISSUED FOR CONSTR.	<input type="checkbox"/> REDFOR DRAWING

**\*NOTE:**  
REMOVE AND REINSTALL EXIST. ELECTRIC CABLE IN CONDUIT TO PROP. CONDUIT.

**THOUVENOT, WADE & MOERCHEN, INC.**  
ENGINEERS ♦ SURVEYORS ♦ PLANNERS



**CORPORATE OFFICE**  
4940 OLD COLLINSVILLE RD.  
SWANSEA, ILLINOIS 62226  
TEL (618) 624-4488  
FAX (618) 624-6688  
corp@twm-inc.com

**WATERLOO OFFICE**  
118 EAST THIRD STREET  
WATERLOO, ILLINOIS 62298  
TEL (618) 939-5050  
FAX (618) 939-3938  
waterloo@twm-inc.com

**ST. LOUIS OFFICE**  
1001 CRAIG ROAD, SUITE 260  
ST. LOUIS, MISSOURI 63146  
TEL (314) 236-5052  
FAX (314) 872-2194  
stlouis@twm-inc.com

PROFESSIONAL REGISTRATIONS	LICENSE NO.
ILLINOIS PROFESSIONAL DESIGN FIRM	184-017220
PROFESSIONAL ENGINEERING CORP.	62-035370
PROFESSIONAL STRUCTURAL ENGR. CORP.	81-002202
ILLINOIS PROF. LAND SURVEYING CORP.	048-000229
MISSOURI PROFESSIONAL ENGR. CORP.	NC 001528
MISSOURI LAND SURVEYING CORP.	NC 000346

SEAL

Renewed Date:  
Signature Date:

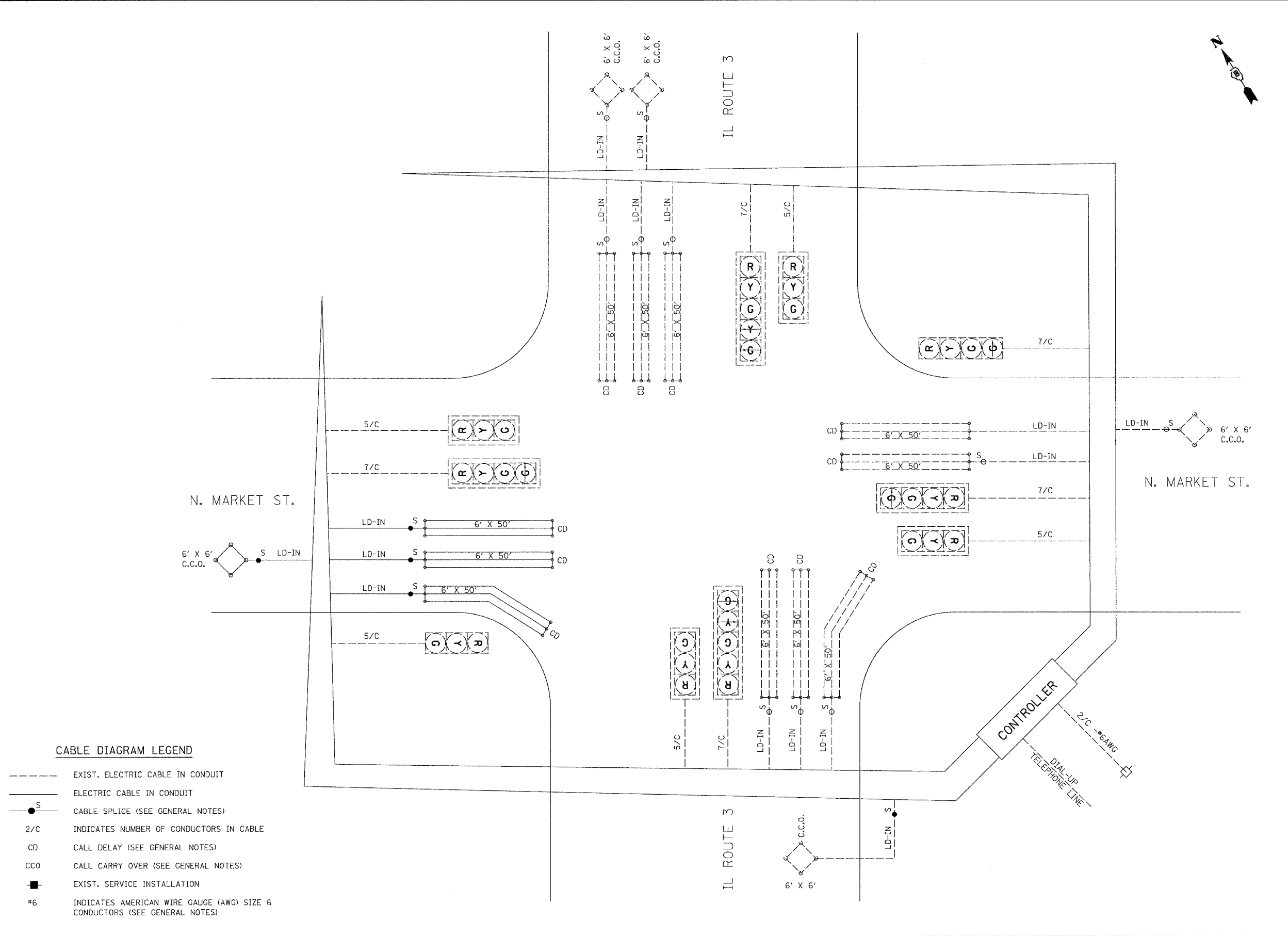
**STATEMENT OF RESPONSIBILITY**  
I hereby confirm that the document herein to be authenticated by my seal is restricted to this sheet, and I hereby disclaim any responsibility for all other drawings, specifications, estimates, reports or other documents or instruments relating to or intended to be utilized for any other part of the architectural, engineering or survey project.

**TITLE:** TRAFFIC SIGNAL PLAN  
**CABLE DIAGRAM**

**PROJECT:** NORTH MARKET STREET  
AT ILLINOIS ROUTE 3  
CITY OF WATERLOO  
MONROE COUNTY, ILLINOIS

REV.	DATE	DESCRIPTION
△		
△		

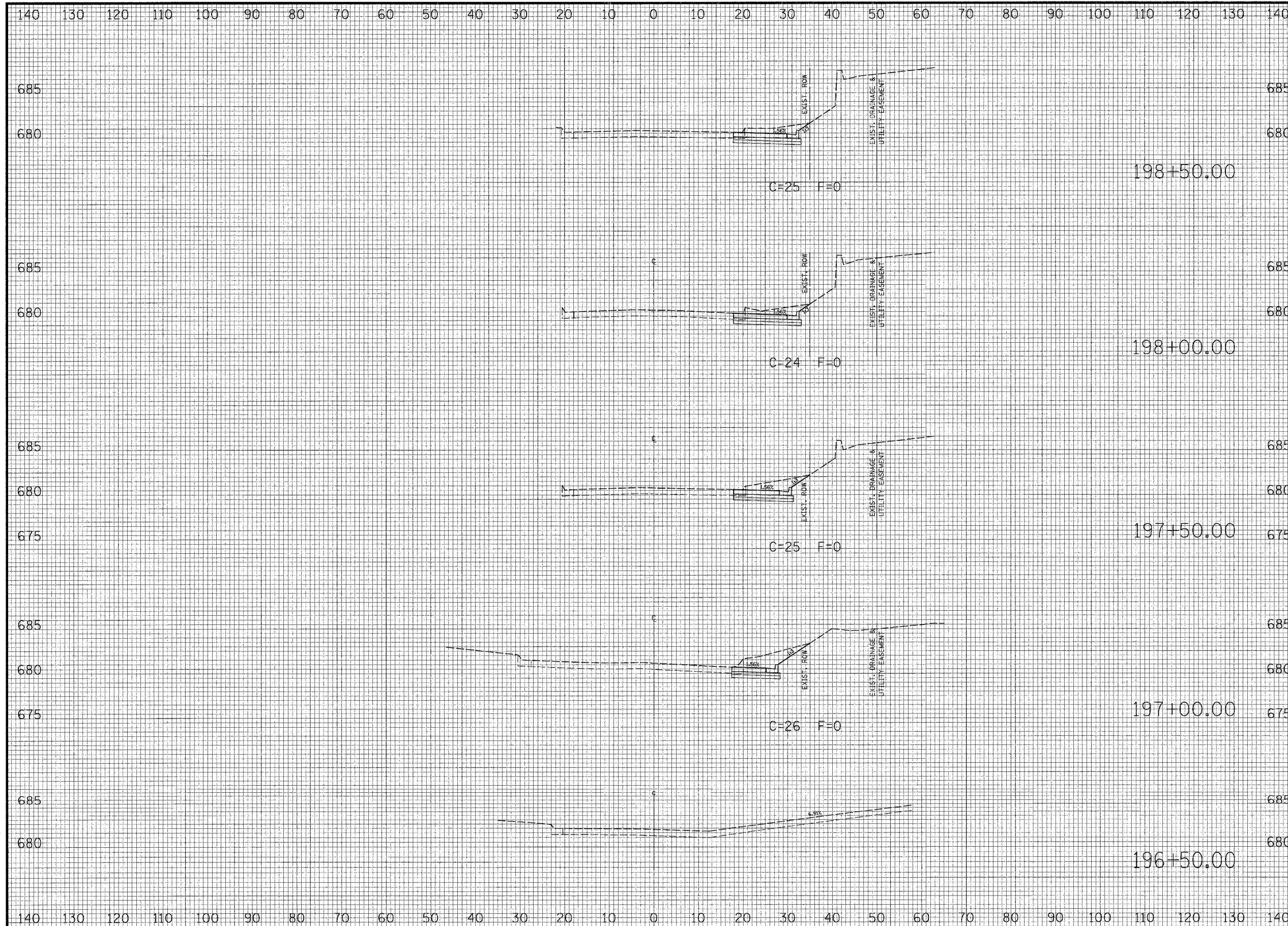
DRAWN BY: JMI	SHEET
DESIGNED BY: JMI	10
CHECKED BY: SJK	
APPROVED BY:	
PROJECT NUMBER: 060025	OF 12 SHEETS
<input checked="" type="checkbox"/> ISSUED FOR REVIEW	<input type="checkbox"/> ISSUED FOR BIDDING
<input type="checkbox"/> ISSUED FOR CONSTR.	<input type="checkbox"/> RECORDED DRAWING



**CABLE DIAGRAM LEGEND**

- EXIST. ELECTRIC CABLE IN CONDUIT
- ELECTRIC CABLE IN CONDUIT
- S CABLE SPLICE (SEE GENERAL NOTES)
- 2/C INDICATES NUMBER OF CONDUCTORS IN CABLE
- CD CALL DELAY (SEE GENERAL NOTES)
- CCO CALL CARRY OVER (SEE GENERAL NOTES)
- EXIST. SERVICE INSTALLATION
- #6 INDICATES AMERICAN WIRE GAUGE (AWG) SIZE 6 CONDUCTORS (SEE GENERAL NOTES)





**THOUVENOT, WADE & MOERCHEN, INC.**  
 ENGINEERS ♦ SURVEYORS ♦ PLANNERS



- CORPORATE OFFICE**  
 4940 OLD COLLINSVILLE RD.  
 SWANSEA, ILLINOIS 62226  
 TEL (618) 624-4488  
 FAX (618) 624-6688  
 corp@twm-inc.com
- WATERLOO OFFICE**  
 118 EAST THIRD STREET  
 WATERLOO, ILLINOIS 62298  
 TEL (618) 939-5050  
 FAX (618) 939-3938  
 waterloo@twm-inc.com
- ST. LOUIS OFFICE**  
 1001 CRAIG ROAD, SUITE 260  
 ST. LOUIS, MISSOURI 63146  
 TEL (314) 236-5052  
 FAX (314) 872-2194  
 stlouis@twm-inc.com

PROFESSIONAL REGISTRATIONS	LICENSE NO.
ILLINOIS PROFESSIONAL DESIGN FIRM	184-001220
PROFESSIONAL ENGINEERING CORP.	62-035370
PROFESSIONAL STRUCTURAL ENGR. CORP.	81-065097
ILLINOIS PROF. LAND SURVEYING CORP.	048-000029
MISSOURI PROFESSIONAL ENGR. CORP.	NC 001528
MISSOURI LAND SURVEYING CORP.	NC 000346

SEAL

Recent Date:  
 Signature Date:

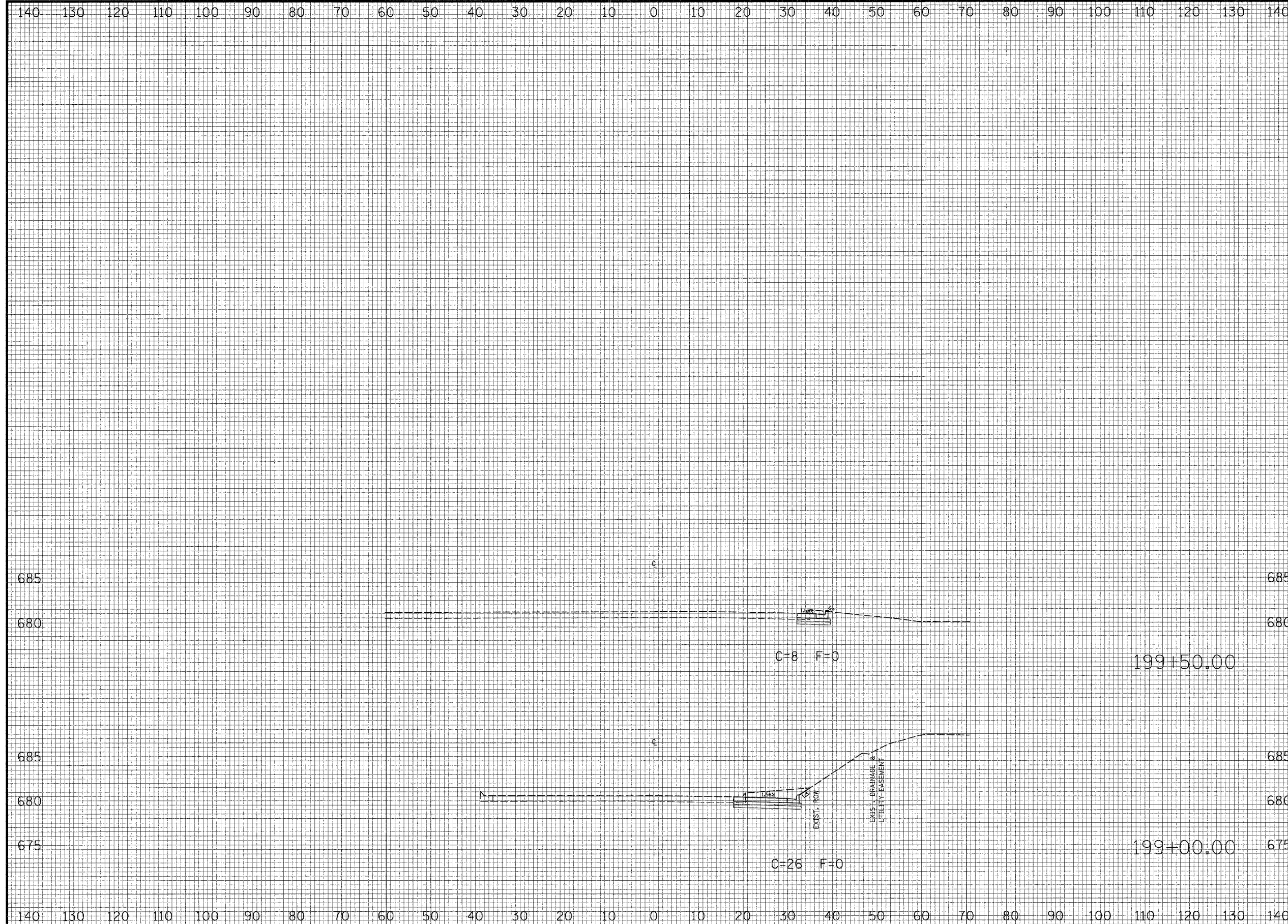
**STATEMENT OF RESPONSIBILITY**  
 I hereby confirm that the document herein to be authenticated by my seal is restricted to this sheet, and I hereby disclaim any responsibility for all other drawings, specifications, estimates, reports or other documents or instruments relating to or intended to be utilized for any other part of the architectural, engineering or survey project.

TITLE: **NORTH MARKET STREET CROSS SECTIONS**

PROJECT: **NORTH MARKET WIDENING AT ILLINOIS ROUTE 3 CITY OF WATERLOO MONROE COUNTY, ILLINOIS**

REV.	DATE	DESCRIPTION
△		
△		

DRAWN BY: JMI	SHEET
DESIGNED BY:	
CHECKED BY: SJK	<b>11</b>
APPROVED BY: RAH	
PROJECT NUMBER: T12060025	OF 12 SHEETS
<input type="checkbox"/> ISSUED FOR REVIEW	<input type="checkbox"/> ISSUED FOR BIDDING
<input checked="" type="checkbox"/> ISSUED FOR CONSTR.	<input type="checkbox"/> RECORD DRAWING



**THOUVENOT, WADE & MOERCHEN, INC.**  
ENGINEERS ♦ SURVEYORS ♦ PLANNERS



**CORPORATE OFFICE**  
4940 OLD COLLINSVILLE RD.  
SWANSEA, ILLINOIS 62226  
TEL (618) 624-4488  
FAX (618) 624-6688  
corp@twm-inc.com

**WATERLOO OFFICE**  
118 EAST THIRD STREET  
WATERLOO, ILLINOIS 62298  
TEL (618) 939-5050  
FAX (618) 939-3938  
waterloo@twm-inc.com

**ST. LOUIS OFFICE**  
1001 CRAIG ROAD, SUITE 260  
ST. LOUIS, MISSOURI 63146  
TEL (314) 236-5052  
FAX (314) 872-2194  
stlouis@twm-inc.com

PROFESSIONAL REGISTRATIONS	LICENSE NO.
ILLINOIS PROFESSIONAL DESIGN FIRM	184-091229
PROFESSIONAL ENGINEERING CORP.	62-03370
PROFESSIONAL STRUCTURAL ENGR. CORP.	81-005802
ILLINOIS PROF. LAND SURVEYING CORP.	048-000029
MISSOURI PROFESSIONAL ENGR. CORP.	NC 001528
MISSOURI LAND SURVEYING CORP.	NC 000346

SEAL

Renewal Date:  
Signature Date:

**STATEMENT OF RESPONSIBILITY**  
I hereby confirm that the document herein to be submittted by my seal is restricted to this sheet, and I hereby disclaim any responsibility for all other drawings, specifications, estimates, reports or other documents or instruments relating to or intended to be utilized for any other part of the architectural, engineering or survey project.

**TITLE:** NORTH MARKET STREET CROSS SECTIONS

**PROJECT:** NORTH MARKET WIDENING AT ILLINOIS ROUTE 3 CITY OF WATERLOO MONROE COUNTY, ILLINOIS

REV.	DATE	DESCRIPTION
△		
△		

DRAWN BY: JMI	SHEET
DESIGNED BY:	
CHECKED BY: SJK	12
APPROVED BY: RAH	
PROJECT NUMBER: T12060025	OF 12 SHEETS
<input type="checkbox"/> ISSUED FOR REVIEW	<input type="checkbox"/> ISSUED FOR BIDDING
<input checked="" type="checkbox"/> ISSUED FOR CONSTR.	<input type="checkbox"/> FIELD/DI DRAWING