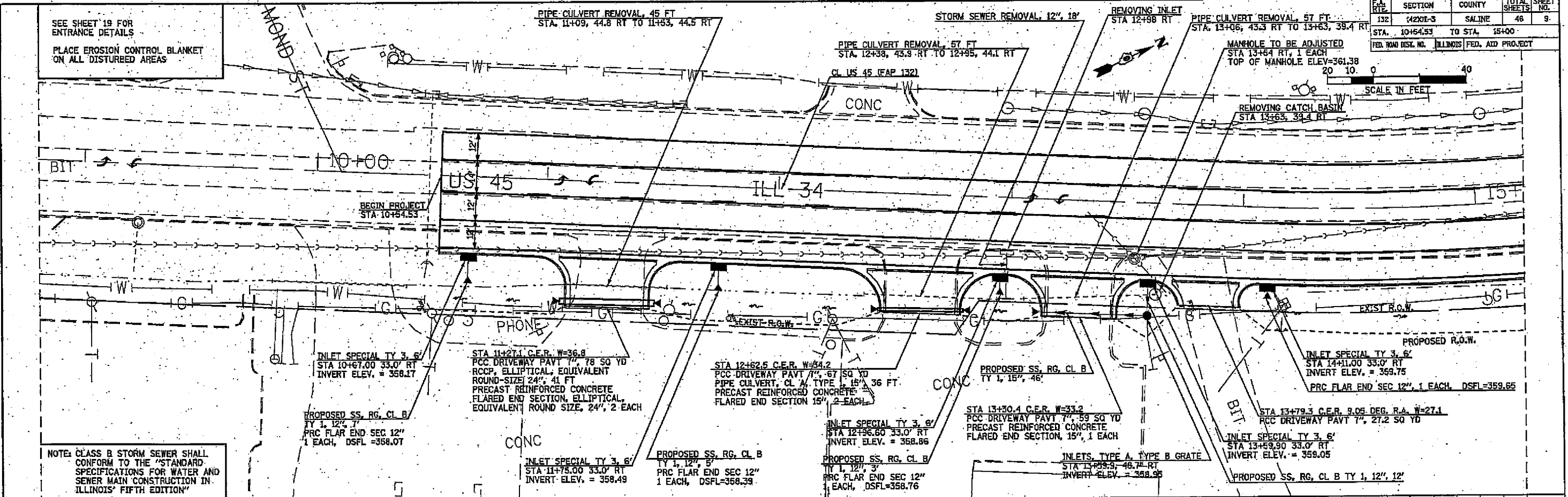


FILE NO.	SECTION	COUNTY	TOTAL SHEETS	SHEET NO.
132	42X01-3	SALINE	46	9
STA. 10+54.53 TO STA. 15+00				
FED. ROAD DIST. NO. ILLINOIS FED. AID PROJECT				

SEE SHEET 19 FOR ENTRANCE DETAILS
PLACE EROSION CONTROL BLANKET ON ALL DISTURBED AREAS



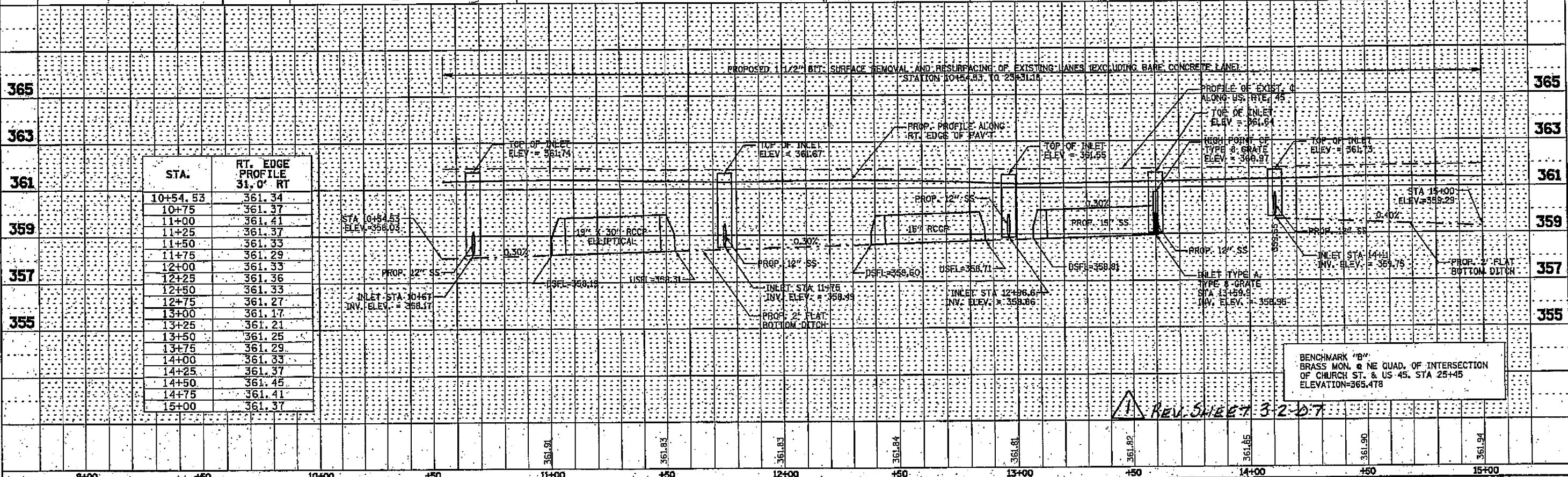
NOTE: CLASS B STORM SEWER SHALL CONFORM TO THE "STANDARD SPECIFICATIONS FOR WATER AND SEWER MAIN CONSTRUCTION IN ILLINOIS" FIFTH EDITION.

PLAN

DATE	BY

PROFILE

DATE	BY



STA.	RT. EDGE PROFILE 31.0' RT
10+54.53	361.34
10+75	361.37
11+00	361.41
11+25	361.37
11+50	361.33
11+75	361.29
12+00	361.33
12+25	361.36
12+50	361.33
12+75	361.27
13+00	361.17
13+25	361.21
13+50	361.25
13+75	361.29
14+00	361.33
14+25	361.37
14+50	361.45
14+75	361.41
15+00	361.37

BENCHMARK "B"
BRASS MON. @ NE QUAD. OF INTERSECTION
OF CHURCH ST. & US 45. STA 25+45
ELEVATION=365.478

REV. SHEET 3-2-D-7