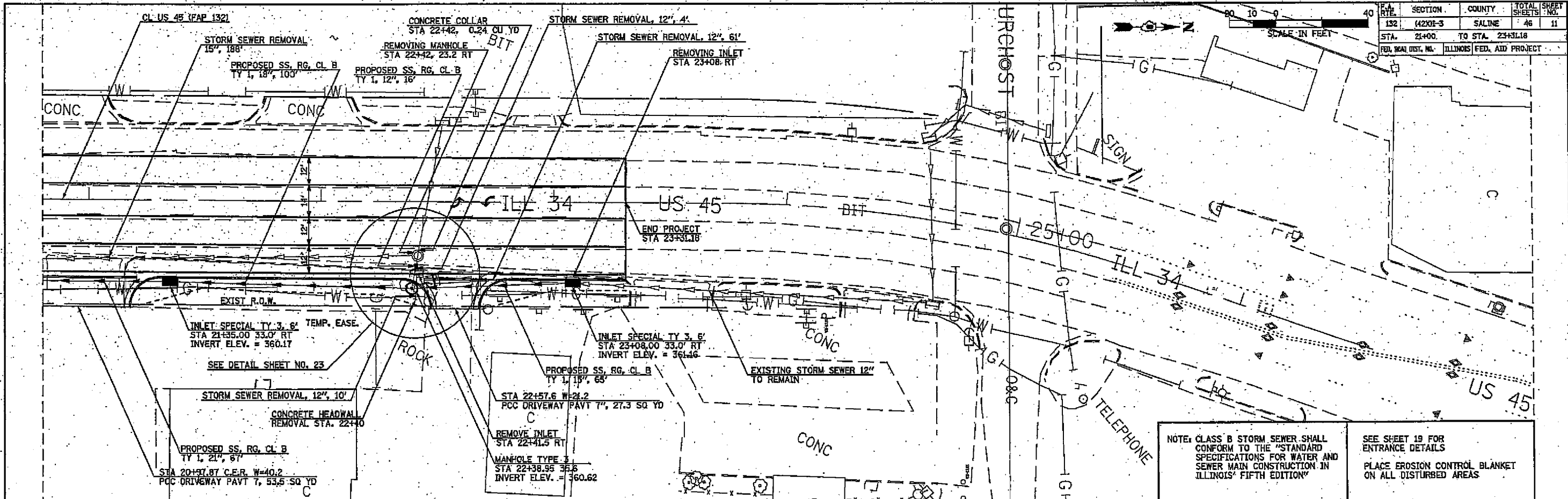
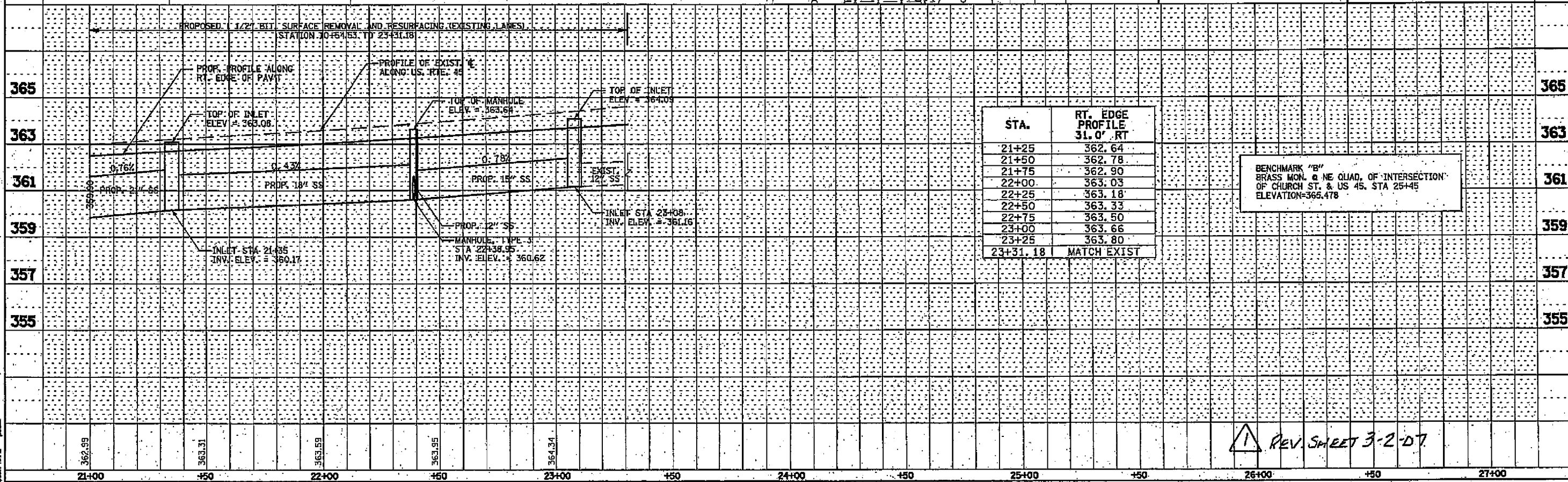


SECTION	COUNTY	TOTAL SHEETS	SHEET NO.
132 (4202-3)	SALINE	46	11
STA. 21+00 TO STA. 23+31.18		ILLINOIS FED. AID PROJECT	



NOTE: CLASS B STORM SEWER SHALL CONFORM TO THE "STANDARD SPECIFICATIONS FOR WATER AND SEWER MAIN CONSTRUCTION IN ILLINOIS" FIFTH EDITION

SEE SHEET 19 FOR ENTRANCE DETAILS  
PLACE EROSION CONTROL BLANKET ON ALL DISTURBED AREAS



REV. SHEET 3-2-D7

PLAN  
DATE: 11/11/03  
BY: [Name]  
CHECKED: [Name]  
SCALE: AS SHOWN

PROFILE  
DATE: 11/11/03  
BY: [Name]  
CHECKED: [Name]  
SCALE: AS SHOWN

USER NAME: [Name]