



CONTRACT NO. 98944				
P.A. RITE	SECTION	COUNTY	TOTAL SHEETS	SHEET NO.
132	42X1-3	SALINE	46	8
STA.		TO STA.		
FED. ROAD DIST. NO.		ILLINOIS FED. AID PROJECT		

### DRAINAGE SCHEDULE

LOCATION STATION TO STATION	STORM SEWERS, RUBBER GASKET, CLASS B TYPE I 12"	STORM SEWERS, RUBBER GASKET, CLASS B TYPE I 15"	STORM SEWERS, RUBBER GASKET, CLASS B TYPE I 18"	STORM SEWERS, RUBBER GASKET, CLASS B TYPE I 21"	STORM SEWERS, RUBBER GASKET, CLASS B TYPE I 24"	PRECAST FLARED END SEC. 12"	PRECAST FLARED END SEC. 15"	PRECAST FLARED END SEC. ELLIPTICAL EQUIV. 24"	RCCP CLASS A TYPE I 15"	RCCP CLASS A TYPE I ELLIPTICAL EQUIV. 24"	SUB-BASE GRANULAR MATERIAL TYPE A, 4"	INLETS, SPECIAL, TYPE 3 6'	INLETS, TYPE A, TYPE B GRATE	COMB. CONCRETE CURB AND GUTTER B-6, 24	MANHOLES, SPECIAL, TYPE 3	MANHOLE TO BE ADJUSTED	PROTECTIVE COAT	TRENCH BACKFILL	RELOCATE EXISTING FLARED END SECTION	CONCRETE COLLAR	CONCRETE BOX CULVERT
	FOOT	FOOT	FOOT	FOOT	FOOT	EACH	EACH	EACH	FOOT	FOOT	SQ. YD	EACH	EACH	FOOT	EACH		SQ YD	CU YD	EACH	CU YD	CU YD
10+54.53 TO 23+31.18											693			1214.9			329.4				
10+67	7																				
10+96.3, 33.0 RT TO 11+08.7, 54.2 RT																					
11+00.6, 52.3 RT TO 11+06.6, 52.3 RT																					
11+06.6, 52.3 RT TO 11+47.6, 51.6 RT																					
11+45.0, 54.2 RT TO 11+58.0, 33.0 RT																					
11+47.6, 51.6 RT TO 11+53.6, 51.6 RT																					
11+75	5																				
12+27.9, 33.0 RT TO 12+45.9, 51.6 RT																					
12+38.3, 50.3 RT TO 12+44.4, 50.3 RT																					
12+44.4, 50.3 RT TO 12+80.4, 49.4 RT																					
12+78.9, 51.4 RT TO 12+83.0, 33.0 RT																					
12+80.4, 49.4 RT TO 12+86.5, 49.4 RT																					
12+96.6	3																				
12+99.0, 33.0 RT TO 13+14.4, 50.4 RT																					
13+06.8, 48.9 RT TO 13+12.9, 48.9 RT																					
13+12.9, 48.9 RT TO 13+58.9, 48.7 RT																					
13+46.4, 50.4 RT TO 13+56.9, 33.0 RT		46																			
13+54																					
13+59.9	12																				
13+59.9, 48.7 RT																					
13+62.9, 33.0 RT TO 13+73.3, 43.6 RT																					
13+99.2, 43.6 RT TO 14+06.7, 33.0 RT																					
14+11																					
15+48	3																				
16+33.95, 12.28 DEG. R. A.																					
16+43.33 TO 16+82.12																					
16+45, 48.1 RT																					
16+85																					
16+87.91 TO 18+19.45																					
17+63.0, 33.0 RT TO 17+80.3, 51.6 RT																					
17+90																					
18+02.9, 51.6 RT TO 18+19.5, 33.0 RT																					
18+22																					
18+25.24 TO 18+88																					
18+25.3, 33.0 RT TO 18+37.2, 46.1 RT																					
18+74.5, 46.2 RT TO 18+87.5, 33.0 RT																					
18+91																					
18+94 TO 19+71																					
19+10.4, 33.0 RT TO 19+23.4, 48.8 RT																					
19+57.4, 48.8 RT TO 19+70.4, 33.0 RT																					
19+74																					
19+77 TO 20+59.88																					
19+94.6, 33.0 RT TO 20+11.6, 45.0 RT																					
20+39.3, 45.0 RT TO 20+56.2, 33.0 RT																					
20+63																					
20+65.88 TO 21+32																					
20+65.9, 33.0 RT TO 20+78.4, 46.0 RT																					
21+17.4, 46.0 RT TO 21+30.4, 33.0 RT																					
21+35																					
21+38 TO 22+27.81																					
22+34.6, 33.0 RT TO 22+47.6, 46.0 RT																					
22+38.95, 35.6 RT																					
22+39.19, 36.08 RT TO 22+42.04, 20.75 RT																					
22+40.10 TO 23+05.00	16																				
22+42, 20.75 RT		65																			
22+67.6, 46.0 RT TO 22+80.6, 33.0 RT																					
23+08																					
TOTALS	46	111	100	160	320	5	3	2	36	41	693	13	1	1677	1	2	460	53	1	0.24	4.1

PLOT DATE = 3/22/2007  
 FILE NAME = c:\pwworkspace\project\dwg\sheet3-2.dwg  
 PLOT SCALE = 1/8" = 1' - 0"  
 USER NAME = jsmith

REV. SHEET 3-2-07

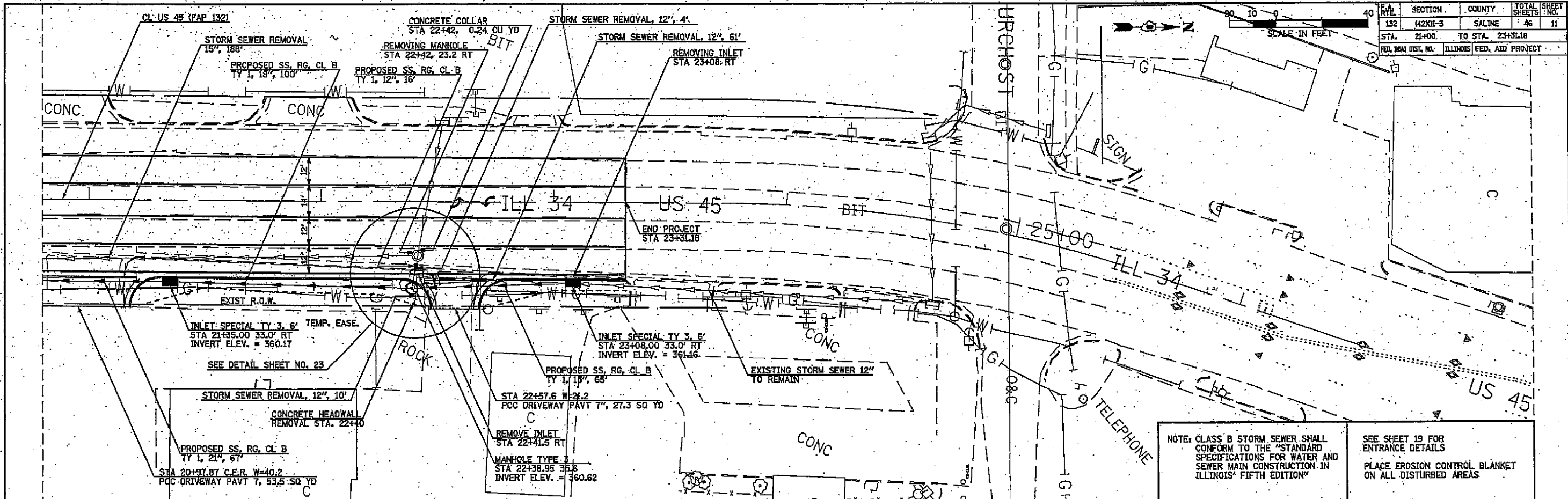
SCHEDULES: DRAINAGE







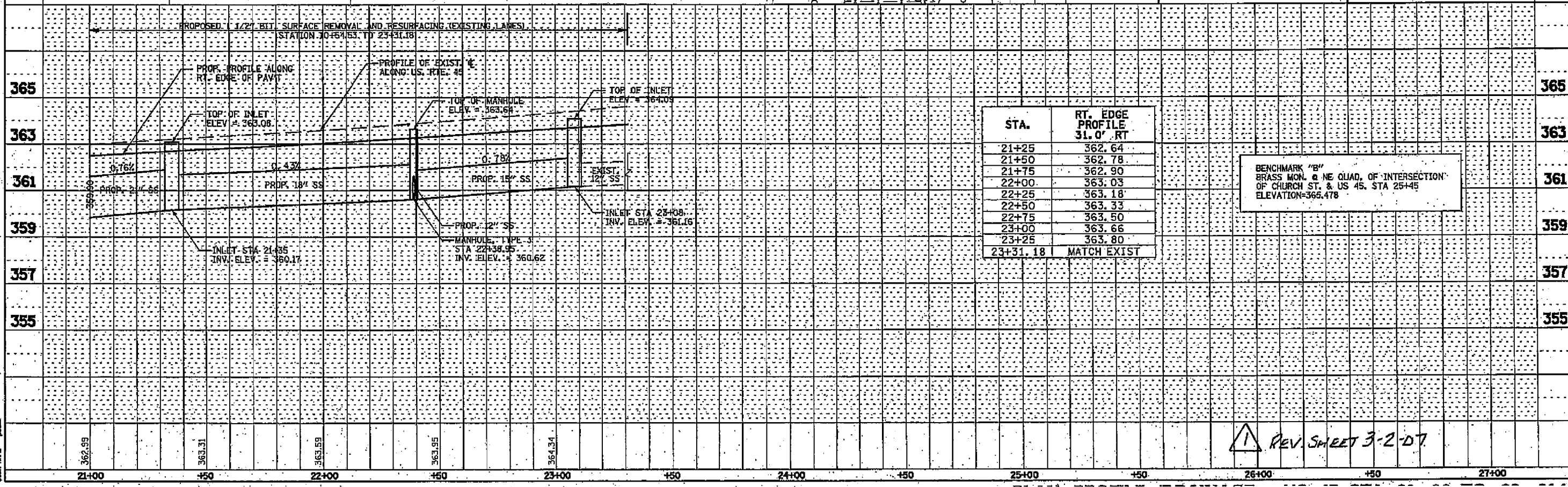
SECTION	COUNTY	TOTAL SHEETS	SHEET NO.
132 (4202-3)	SALINE	46	11
STA. 21+00 TO STA. 23+31.18		ILLINOIS FED. AID PROJECT	



NOTE: CLASS B STORM SEWER SHALL CONFORM TO THE "STANDARD SPECIFICATIONS FOR WATER AND SEWER MAIN CONSTRUCTION IN ILLINOIS" FIFTH EDITION

SEE SHEET 19 FOR ENTRANCE DETAILS

PLACE EROSION CONTROL BLANKET ON ALL DISTURBED AREAS



REV. SHEET 3-2-D7

PLAN  
 REVISIONS  
 DATE BOOK  
 DRAWN BY  
 CHECKED BY  
 DATE FILE NAME

PROFILE  
 REVISIONS  
 DATE BOOK  
 DRAWN BY  
 CHECKED BY  
 DATE FILE NAME

DATE PLOT  
 PLOT SCALE  
 USER NAME