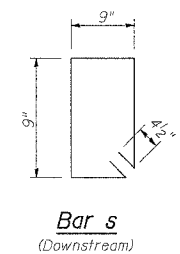
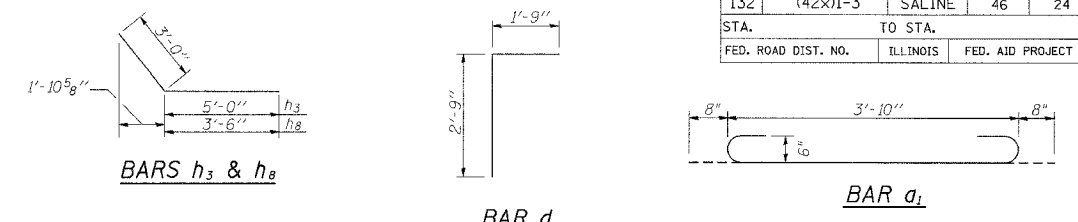
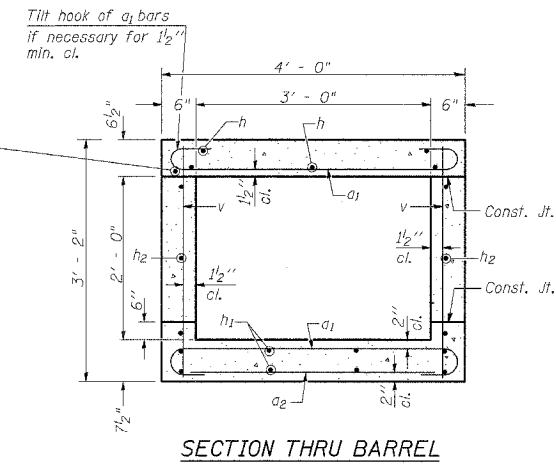
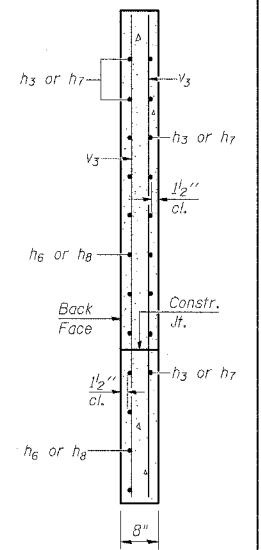
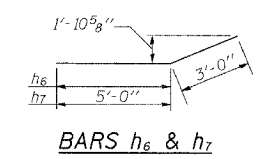


STATE OF ILLINOIS  
DEPARTMENT OF TRANSPORTATION

F.A. RTE	SECTION	COUNTY	TOTAL SHEETS	SHEET NO
132	(42x)I-3	SALINE	46	24
STA.	TO STA.			
FED. ROAD DIST. NO.	ILLINOIS	FED. AID PROJECT		

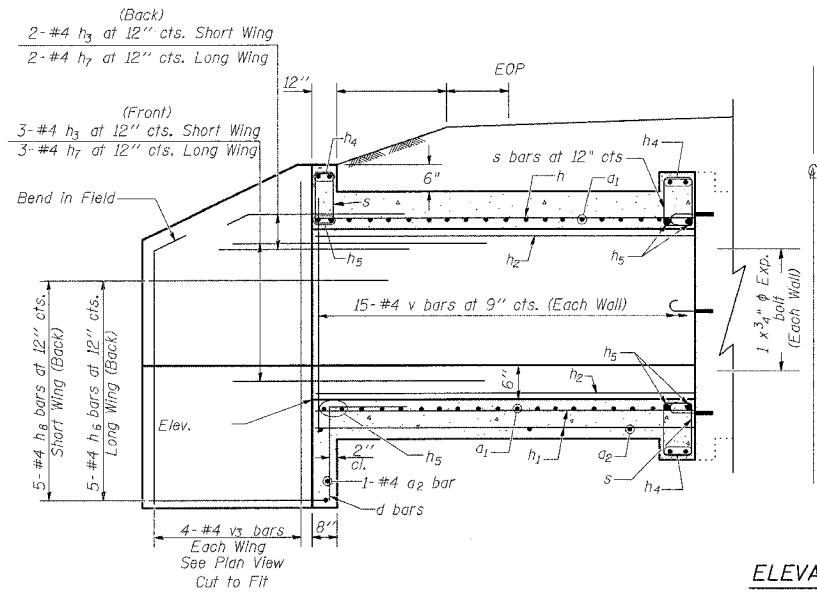


**DESIGN STRESSES**  
 $f_y = 60,000$  psi  
 $f'_c = 3,500$  psi  
**LOADING HS 20-44**



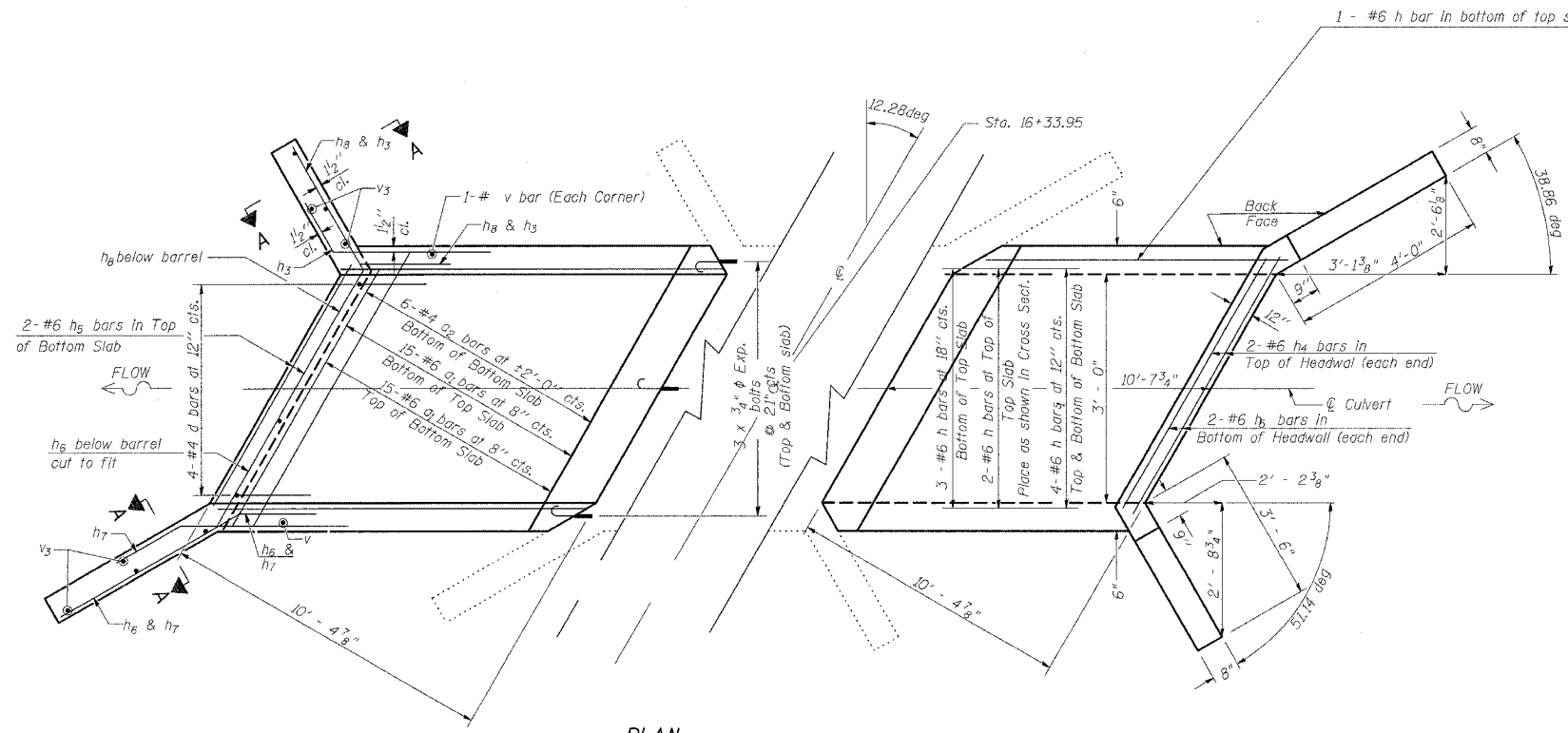
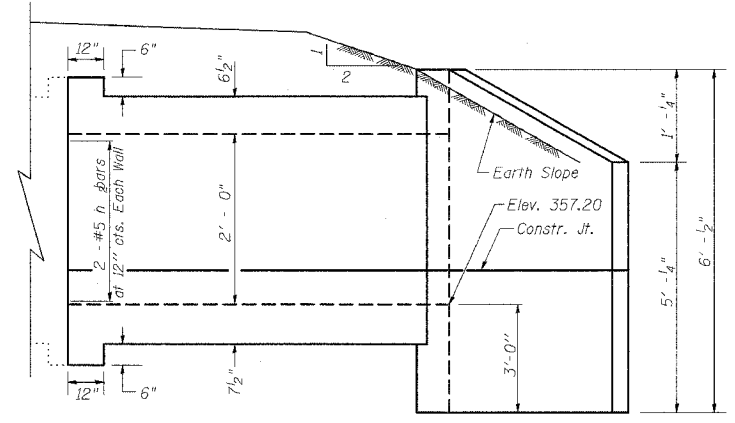
**BILL OF MATERIAL**

Bar	No.	Size	Length	Shape
a1	30	#6	5'-2"	U
a2	7	#4	3'-10"	—
d	4	#4	4'-6"	U
h	6	#6	10'-4"	—
h1	8	#4	10'-4"	—
h2	4	#5	10'-4"	—
h3	5	#4	8'-0"	—
h4	6	#6	3'-10"	—
h5	8	#6	3'-10"	—
h6	5	#4	7'-0"	—
h7	5	#4	8'-0"	—
h8	5	#4	6'-6"	—
s	5	#4	3'-9"	□
v	32	#4	2'-9"	—
v3	8	#4	5'-9"	—
Concrete Box Culverts			Cu. Yd.	4.1
Reinforcement Bars			Pound	732
3/4" Expansion bolts			Each	8
Protective Coat			Sq. Yd.	5.2



**ELEVATION**

Dimensions at Rt. L's to Roadway



**PLAN**

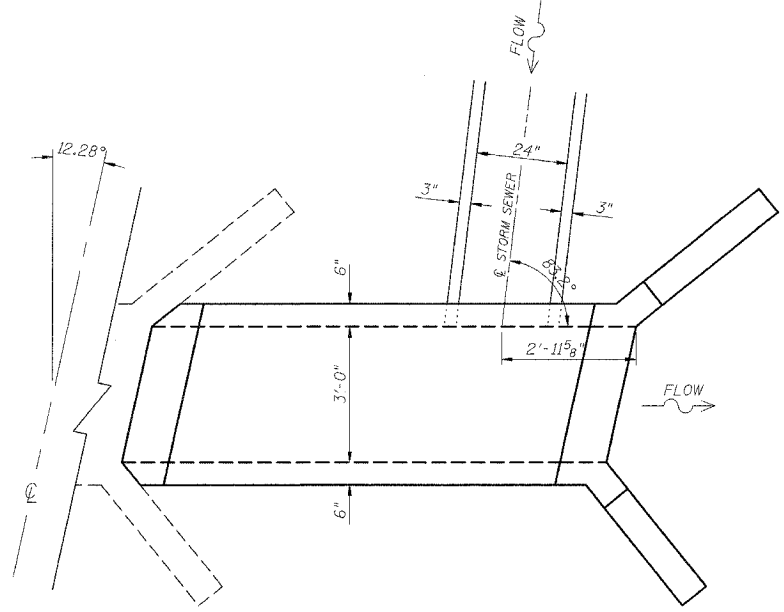
**NOTES**

Reinforcement Bars shall conform to the requirements of AASHTO M-31, M-42 or M-53, Grade 60.  
 A distance of half the length of the wingwall but not less than six feet of the barrel shall be poured monolithically with the wingwalls.  
 Protective Coat shall be applied to the top and inside vertical faces of wingwalls according to Article 503.19.  
 All construction joints shall be bonded.  
 Expansion bolts shall be 3/4" φ x 12" hooked bolts. Hooked bolts shall extend a minimum of 9" into new concrete and have a minimum certified proof load of 4,080 lbs.

**REVISIONS**

DRAWN	2-04
REVISED	
REVISED	
REVISED	

DATE-TIME  
DRAW-SPEC  
BASED ON: SSB-H-R 6-1-2000



**DETAILS: BOX CULVERT EXTENSION**

ILLINOIS DEPARTMENT OF TRANSPORTATION  
**BOX CULVERT EXTENSION**  
 STATION 16+33.95  
 3' X 2', SKEW RT. AH.  
 EXTEND 10'- 7 3/4"