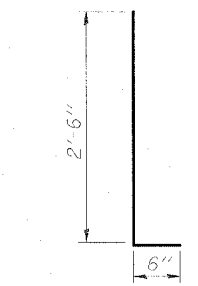


**NORTHBOUND
BILL OF MATERIAL**

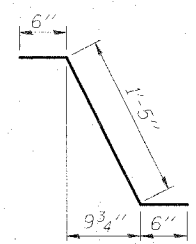
Bar	No.	Size	Length	Shape
a ₁₄ (E)	318	#5	17'-6"	—
a ₂₀ (E)	324	#5	43'-7"	—
a ₂₁ (E)	232	#5	42'-11"	—
a ₃₀ (E)	324	#5	32'-1"	—
a ₃₁ (E)	232	#5	31'-5"	—
b(E)	480	#5	30'-9"	—
b ₁ (E)	77	#6	49'-0"	—
b ₂ (E)	462	#5	26'-8"	—
d(E)	190	#5	3'-0"	—
d ₁ (E)	374	#5	2'-5"	—
d ₂ (E)	190	#4	3'-0"	—
d ₃ (E)	380	#4	3'-9"	—
d ₄ (E)	6	#5	2'-2"	—
d ₅ (E)	6	#6	4'-5"	—
d ₆ (E)	10	#6	8'-11"	—
d ₇ (E)	190	#5	3'-8"	—
d ₈ (E)	190	#4	3'-8"	—
e(E)	112	#4	18'-1"	—
e ₁ (E)	24	#4	13'-0"	—
e ₂ (E)	24	#8	27'-0"	—
e ₃ (E)	8	#8	13'-0"	—
e ₄ (E)	24	#5	25'-8"	—
e ₅ (E)	8	#5	13'-0"	—
m(E)	2	#6	40'-3"	—
m ₁ (E)	10	#6	43'-7"	—
m ₂ (E)	3	#6	41'-0"	—
m ₃ (E)	12	#6	7'-8"	—
m ₄ (E)	36	#6	9'-7"	—
m ₅ (E)	4	#6	2'-11"	—
m ₆ (E)	16	#6	6'-10"	—
m ₇ (E)	2	#6	2'-0"	—
m ₈ (E)	5	#6	4'-8"	—
m ₉ (E)	2	#6	31'-0"	—
m ₁₀ (E)	3	#6	31'-9"	—
s(E)	160	#5	5'-7"	—
s ₁ (E)	138	#4	8'-11"	—
v(E)	66	#5	3'-10"	—
v ₅ (E)	94	#5	4'-5"	—
Reinforcement Bars, Epoxy Coated		Pound	92,500	
Concrete Superstructure		Cu. Yds.	414.4	
Bar Splicers		Each	722	

**SOUTHBOUND
BILL OF MATERIAL**

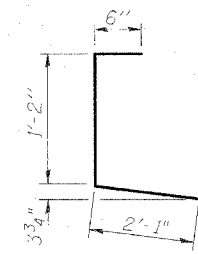
Bar	No.	Size	Length	Shape
a ₁₄ (E)	318	#5	17'-6"	—
a ₂₀ (E)	324	#5	43'-7"	—
a ₂₁ (E)	232	#5	42'-11"	—
a ₃₀ (E)	324	#5	32'-1"	—
a ₃₁ (E)	232	#5	31'-5"	—
b(E)	480	#5	30'-9"	—
b ₁ (E)	77	#6	49'-0"	—
b ₂ (E)	462	#5	26'-8"	—
d(E)	190	#5	3'-0"	—
d ₁ (E)	374	#5	2'-5"	—
d ₂ (E)	190	#4	3'-0"	—
d ₃ (E)	380	#4	3'-9"	—
d ₄ (E)	6	#5	2'-2"	—
d ₅ (E)	6	#6	4'-5"	—
d ₆ (E)	10	#6	8'-11"	—
d ₇ (E)	190	#5	3'-8"	—
d ₈ (E)	190	#4	3'-8"	—
e(E)	112	#4	18'-1"	—
e ₁ (E)	24	#4	13'-0"	—
e ₂ (E)	24	#8	27'-0"	—
e ₃ (E)	8	#8	13'-0"	—
e ₄ (E)	24	#5	25'-8"	—
e ₅ (E)	8	#5	13'-0"	—
m(E)	2	#6	40'-3"	—
m ₁ (E)	10	#6	43'-7"	—
m ₂ (E)	3	#6	41'-0"	—
m ₃ (E)	12	#6	7'-8"	—
m ₄ (E)	36	#6	9'-7"	—
m ₅ (E)	4	#6	2'-11"	—
m ₆ (E)	16	#6	6'-10"	—
m ₇ (E)	2	#6	2'-0"	—
m ₈ (E)	5	#6	4'-8"	—
m ₉ (E)	2	#6	31'-0"	—
m ₁₀ (E)	3	#6	31'-9"	—
s(E)	160	#5	5'-7"	—
s ₁ (E)	138	#4	8'-11"	—
v(E)	66	#5	3'-10"	—
v ₅ (E)	94	#5	4'-5"	—
Reinforcement Bars, Epoxy Coated		Pound	92,500	
Concrete Superstructure		Cu. Yds.	414.4	
Bar Splicers		Each	722	



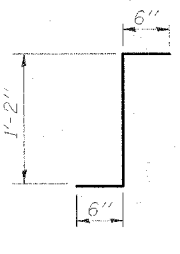
BARS d(E) & d₂(E)



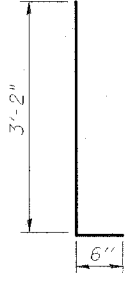
BAR d₁(E)



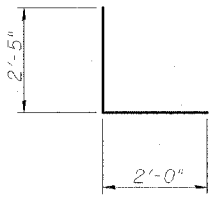
BAR d₃(E)



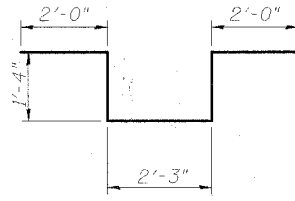
BAR d₄(E)



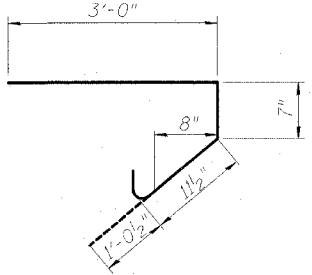
BARS d₇(E) & d₈(E)



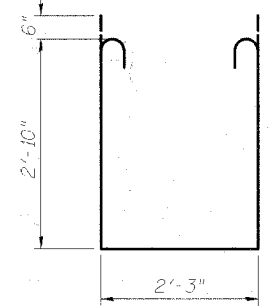
BAR d₅(E)



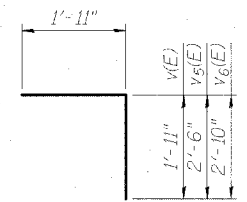
BAR d₆(E)



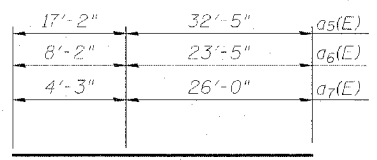
BAR s(E)



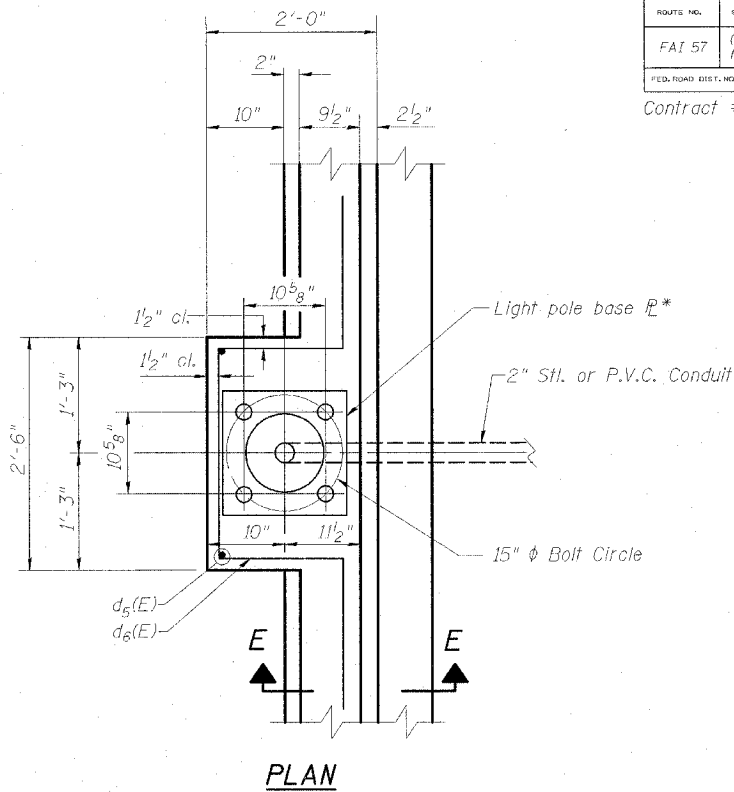
BAR s₁(E)



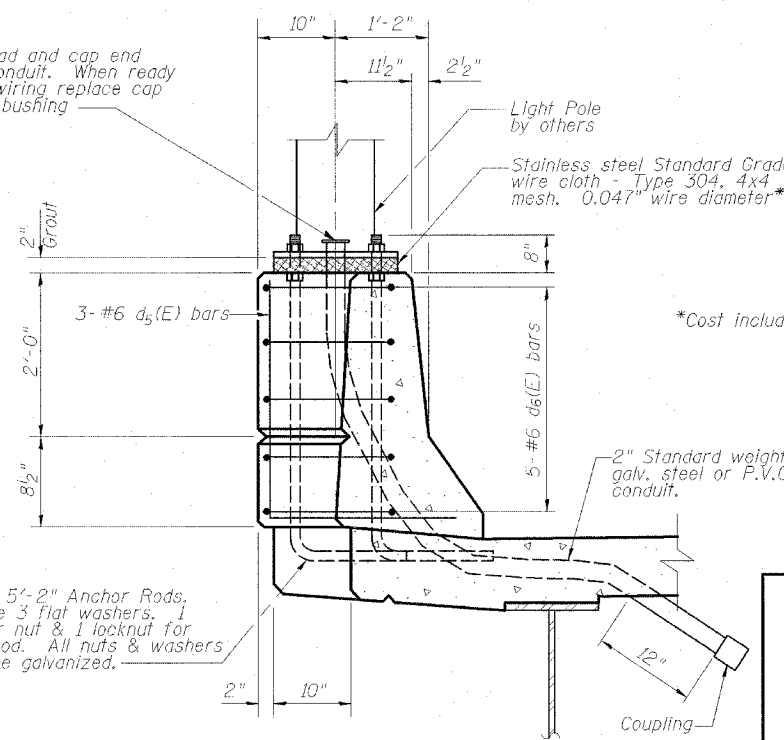
BAR v(E), v₅(E) or v₆(E)



BAR CUTTING DIAGRAM

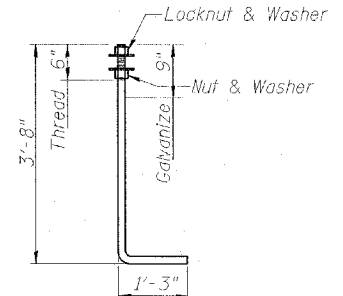


PLAN



SECTION E-E

Note: Cost of anchor bolts and conduit included with Concrete Superstructure.



1" ϕ ANCHOR BOLT
(ASTM F 1554 Grade 105)

SUPERSTRUCTURE BILL OF MATERIAL & LIGHT POLE BASE

INTERSTATE 57 OVER
WEST MAIN ST. (OLD IL RT. 13)
F.A.I. RT. 57 SEC. (X1-6)HBK-2
WILLIAMSON COUNTY
STATION 1529+96.11
STRUCTURE NO. 100-0084 (N.B.)
STRUCTURE NO. 100-0085 (S.B.)

DESIGN FIRM REGISTRATION
No. 184-000450

Clark Dietz
ENGINEERS

1817 SOUTH NEIL STREET
SUITE 100
CHAMPAIGN, IL 61820
PHONE : 217.373.8900
FAX : 217.373.8923

NOTES: DIMENSIONAL DATA IS NOT TO BE OBTAINED BY SCALING ANY PORTION OF THIS DRAWING.

DRAWING NUMBER: S-15

DESIGNED BY: SMM PROJECT NO: 102314
DRAWN BY: MEW DATE: 05/20/06
CHECKED BY: SLD
APPROVED BY: SMM
ACTIVITY INITIALS