

F.A. RTE.	SECTION	COUNTY	TOTAL SHEETS	SHEET NO.
*	**	WILLIAMSON	917	1

* I-57, & OLD IL 13 (FAU 9629)
 (X1-6-2)VB-2,(X1-6)HBK-2

915 total sheets

D-99-019-06



STATE OF ILLINOIS DEPARTMENT OF TRANSPORTATION DIVISION OF HIGHWAYS PROPOSED HIGHWAY PLANS

FAI ROUTE 57 (I-57) & OLD IL 13 (FAU 9629)

SECTION: (X1-6-2)VB-2,(X1-6)HBK-2

PROJECT NO: ACIM-HSIP-057-2(146)053

WILLIAMSON COUNTY

C-99-050-06

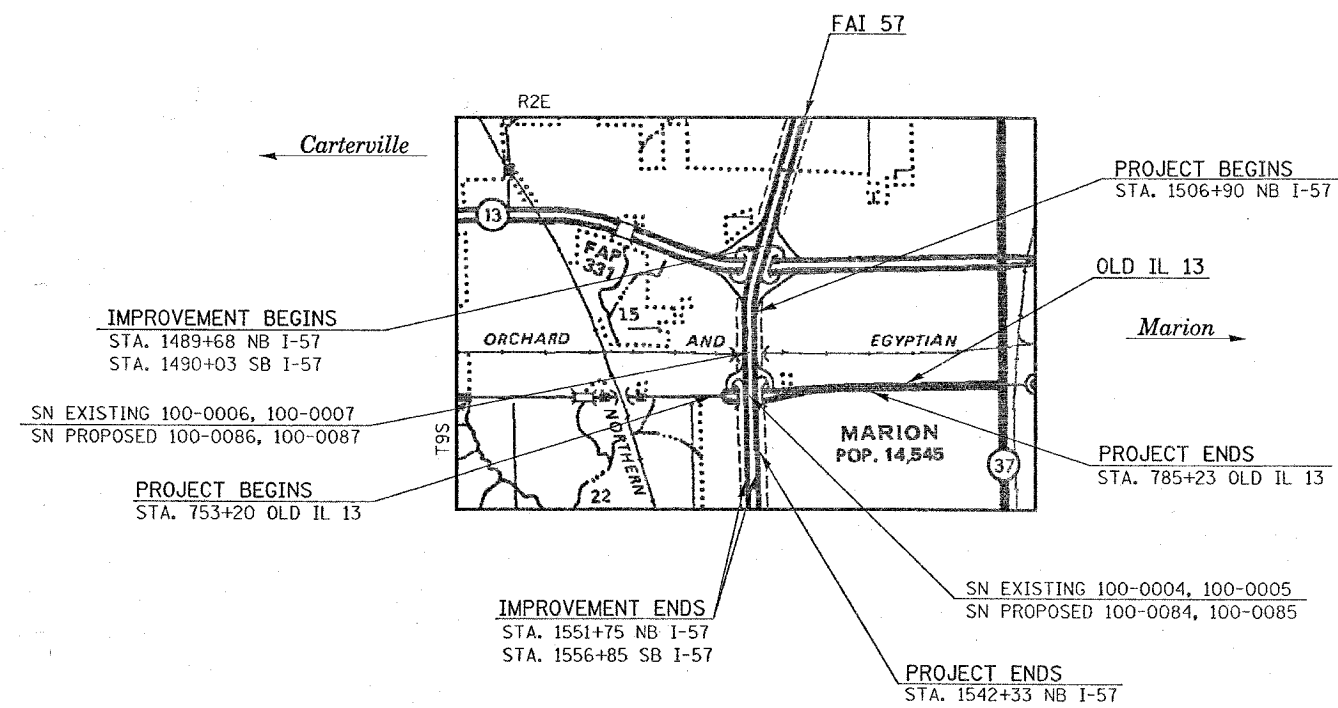
FOR INDEX OF SHEETS, SEE SHEET NO. 2-3
FOR SUMMARY OF QUANTITIES, SEE SHEET NO. 7-18

STATION EQUATIONS:
 STA. 1509+43.50 BK. = STA. 1509+15.58 AH. (SBL)
 STA. 1510+48.26 BK. = STA. 1510+49.47 AH. (NBL)

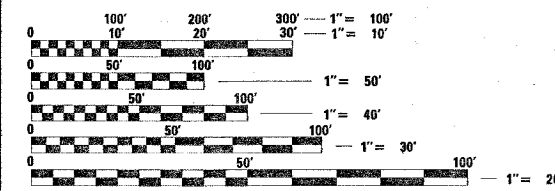
OMISSIONS:
 NONE

TRAFFIC DATA:
 2004 ADT FOR FAI 57 (I-57)
 IL 13 TO OLD IL 13 27,900 WITH 39% TRUCKS
 OLD IL 13 TO I-57/I-24 INTERCHANGE 27,500 WITH 39% TRUCKS
 2004 ADT FOR OLD IL 13 (WEST MAIN STREET)
 EAST OF I-57 16,600 WITH 3% TRUCKS
 WEST OF I-57 14,700 WITH 5% TRUCKS

TOWNSHIPS:
 W. MARION



APPROX. SCALE
 1" = 2800'



FULL SIZE PLANS HAVE BEEN PREPARED USING STANDARD ENGINEERING SCALES. REDUCED SIZED PLANS WILL NOT CONFORM TO STANDARD SCALES. IN MAKING MEASUREMENTS ON REDUCED PLANS, THE ABOVE SCALES MAY BE USED.

J.U.L.I.E.
 JOINT UTILITY LOCATION INFORMATION FOR EXCAVATION
 1-800-892-0123

FAI 57	GROSS LENGTH OF PROJECT: =	3541.79	FT. =	0.671	MILES
	NET LENGTH OF PROJECT: =	3541.79	FT. =	0.671	MILES
FAI 57 (NB)	GROSS LENGTH OF IMPROVEMENT: =	6205.79	FT. =	1.175	MILES
	NET LENGTH OF IMPROVEMENT: =	6205.79	FT. =	1.175	MILES
OLD IL 13	GROSS LENGTH OF PROJECT: =	3203.00	FT. =	0.607	MILES
	NET LENGTH OF PROJECT: =	3203.00	FT. =	0.607	MILES

STATE OF ILLINOIS
 DEPARTMENT OF TRANSPORTATION
 DIVISION OF HIGHWAYS

SUBMITTED Dec 1 2006
Mark Chami
 DEPUTY DIRECTOR OF HIGHWAYS, REGION ENGINEER

February 2, 2007
Eric E. Haran
 ENGINEER OF DESIGN AND ENVIRONMENT

February 2, 2007
Milton R. Sees, P.E.
 DIRECTOR OF HIGHWAYS, CHIEF ENGINEER

**PRINTED BY THE AUTHORITY
 OF THE STATE OF ILLINOIS**

DT DATE = 11/28/2006
 FILE NAME = c:\p\proj\98950\98950.dwg
 PLOT SCALE = 1/2800
 USER = larry.anderson
 PROJECT ENGINEER: LARRY ANDERSON
 SQUAD LEADER: CENTREX 782-4554