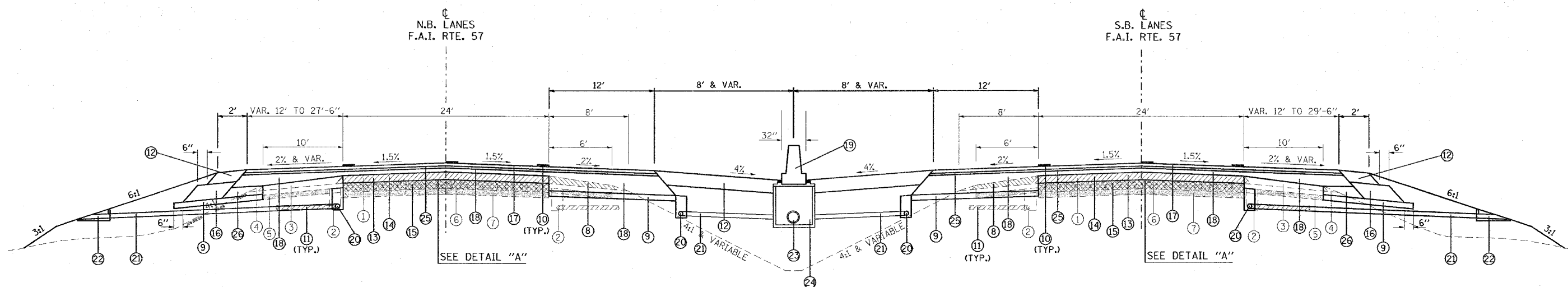


F.A. RTE.	SECTION	COUNTY	TOTAL SHEETS	SHEET NO.
*	*	WILLIAMSON	917	71

STA.	TO STA.
FED. ROAD DIST. NO.	ILLINOIS FED. AID PROJECT

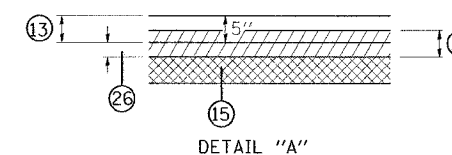
* I-57, & OLD IL 13 (FAU 9629)
 ** (X1-6-2)VB-2,(X1-6)HBK-2

TYPICAL SECTION - FINAL



TO BE USED:

STA. 1514+00 TO STA. 1515+50 NB I-57
 STA. 1518+50 TO STA. 1527+80 NB I-57
 STA. 1532+14 TO STA. 1537+50 NB I-57
 STA. 1511+00 TO STA. 1515+50 SB I-57
 STA. 1517+87 TO STA. 1527+80 SB I-57
 STA. 1532+00 TO STA. 1538+00 SB I-57



GRADE RAISE SECTIONS

LOCATION	STABILIZED SUB-BASE (VARIABLE DEPTH)
	ON EXISTING PAVEMENT
NB I-57	
STA. 1514+00 TO 1515+50	0.04 TO 0.45'
STA. 1518+50 TO 1527+80	0.47 TO 1.19'
STA. 1532+14 TO 1537+50	1.63 TO 0.08'
SB I-57	
STA. 1511+00 TO 1515+50	0.07 TO 0.94'
STA. 1517+87 TO 1527+80	0.84 TO 1.33'
STA. 1532+00 TO 1538+00	1.88 TO 0.12'

- ① EXISTING BITUMINOUS RESURFACING (APPROX. 5")
- ② EXISTING PIPE UNDERDRAINS 4"
- ③ EXISTING BITUMINOUS SHOULDERS
- ④ EXISTING AGGREGATE SHOULDERS TYPE B (WEDGE)
- ⑤ EXISTING AGGREGATE BASE
- ⑥ EXISTING 10" P.C.C. PAVEMENT, 1/2" PARABOLIC CROWN
- ⑦ EXISTING 6" AGGREGATE SUB-BASE
- ⑧ PAVED SHOULDER REMOVAL
- ⑨ SUB-BASE GRANULAR MATERIAL 6"
- ⑩ PROPOSED PAVEMENT MARKING
- ⑪ PIPE UNDERDRAIN REMOVAL
- ⑫ BITUMINOUS SHOULDER SUPERPAVE 8"
- ⑬ POLYMERIZED BITUMINOUS CONCRETE BINDER COURSE, SUPERPAVE, IL-19.0, N105 5"
- ⑭ BITUMINOUS SURFACE REMOVAL 5"
- ⑮ RUBBLIZING PORTLAND CEMENT CONCRETE PAVEMENT
- ⑯ SUB-BASE GRANULAR MATERIAL, TYPE C
- ⑰ POLYMERIZED BITUMINOUS CONCRETE SURFACE COURSE, SUPERPAVE, MIX. E 1/2"
- ⑱ BITUMINOUS CONCRETE BINDER COURSE, SUPERPAVE, IL-19.0, N90 (VAR DEPTH)
- ⑲ CONCRETE BARRIER, DOUBLE FACE, 42 INCH HEIGHT (SEE STANDARD 637006)
- ⑳ PIPE UNDERDRAINS 4"
- ㉑ PIPE UNDERDRAINS 4" (SPECIAL)
- ㉒ CONCRETE HEADWALL FOR PIPE DRAINS
- ㉓ PROPOSED STORM SEWER (FOR SIZE, SEE PLAN/PROFILE SHEETS)
- ㉔ PROPOSED INLET (FOR TYPE AND SPACING, SEE PLAN/PROFILE SHEETS)
- ㉕ POLYMERIZED BITUMINOUS CONCRETE BINDER COURSE, SUPERPAVE, IL-19.0, N105 2 1/4"
- ㉖ STABILIZED SUB-BASE (VARIABLE DEPTH) (SEE CHART AT RIGHT AND NOTE 6)

NOTES

1. OUTLET MEDIAN PIPE UNDERDRAINS INTO PROPOSED DRAINAGE STRUCTURES.
2. DRAINAGE STRUCTURES ALONG THE MEDIAN ARE SPACED APPROXIMATELY EVERY 150'.
3. EXISTING PIPE UNDERDRAINS ARE APPROXIMATELY 30" DEEP.
4. ALL BINDER COURSE SHOWN SHALL BE PAID FOR AS TONS.
5. IF THE VARIABLE DEPTH BINDER COURSE IS LESS THAN 0.19' THEN THE MATERIAL SHALL BE PLACED AS POLYMERIZED BITUMINOUS CONCRETE BINDER COURSE, SUPERPAVE, IL-19.0, N105 WITH THE TOP LIFT OF BINDER COURSE.
6. IF THE VARIABLE DEPTH SHOWN IS GREATER THAN 0.19' THEN STABILIZED SUB-BASE (VARIABLE DEPTH) SHALL BE PLACED ON THE RUBBLIZED PAVEMENT PRIOR TO PLACEMENT OF THE POLYMERIZED BITUMINOUS CONCRETE BINDER COURSE, SUPERPAVE, IL-19.0, N105 5".

REVISIONS	
NAME	DATE

ILLINOIS DEPARTMENT OF TRANSPORTATION

**TYPICAL AND NOTES
 FAI-57**

SCALE: VERT. NONE
 HORIZ. DATE

DRAWN BY CNH
 CHECKED BY