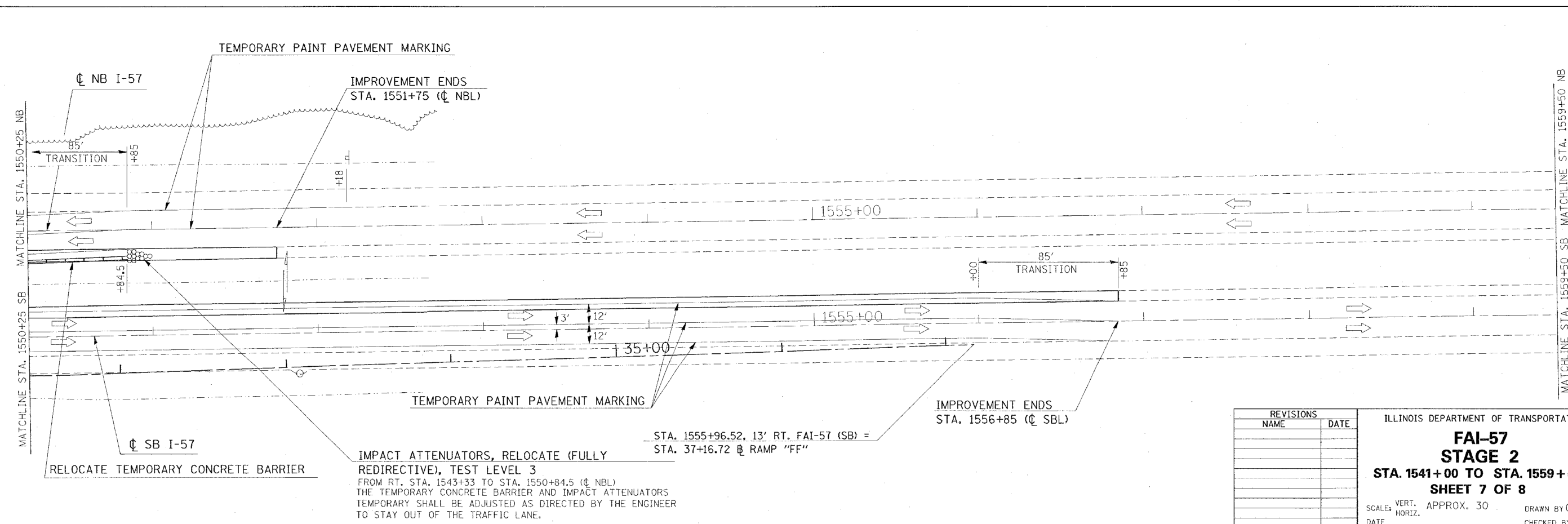
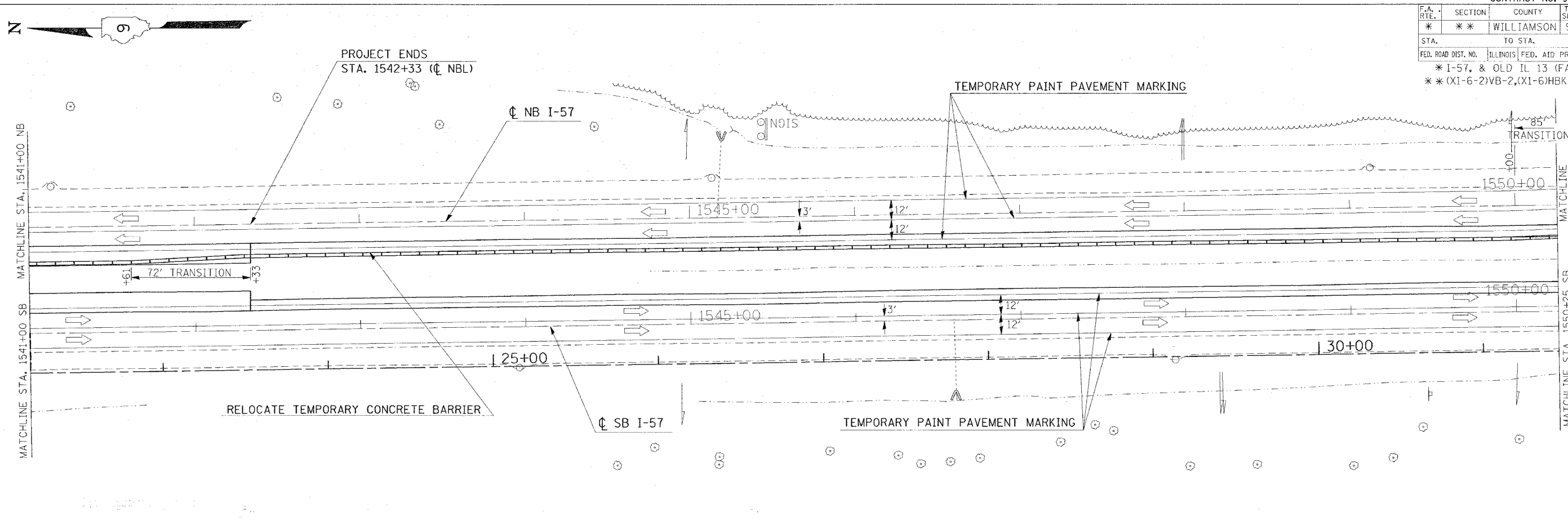


F.A. RTE.	SECTION	COUNTY	TOTAL SHEETS	SHEET NO.
*	**	WILLIAMSON	917	186
STA. TO STA.				
FED. ROAD DIST. NO.	ILLINOIS	FED. AID PROJECT		
* I-57, & OLD IL 13 (FAU 9629)				
** (X1-6-2)VB-2, (X1-6)HBK-2				



REVISIONS	
NAME	DATE

ILLINOIS DEPARTMENT OF TRANSPORTATION
FAI-57
STAGE 2
STA. 1541+00 TO STA. 1559+50
SHEET 7 OF 8
 SCALE: VERT. APPROX. 30' DRAWN BY CNH
 DATE: CHECKED BY

PLOT DATE = 12/1/2006
 FILE NAME = c:\projects\98950\1541-1559\stage2.dwg
 PLOT SCALE = 3/8" = 1' IN.
 USER NAME = hendon

IMPACT ATTENUATORS, RELOCATE (FULLY REDIRECTIVE), TEST LEVEL 3
 FROM RT. STA. 1543+33 TO STA. 1550+84.5 (C NBL)
 THE TEMPORARY CONCRETE BARRIER AND IMPACT ATTENUATORS TEMPORARY SHALL BE ADJUSTED AS DIRECTED BY THE ENGINEER TO STAY OUT OF THE TRAFFIC LANE.