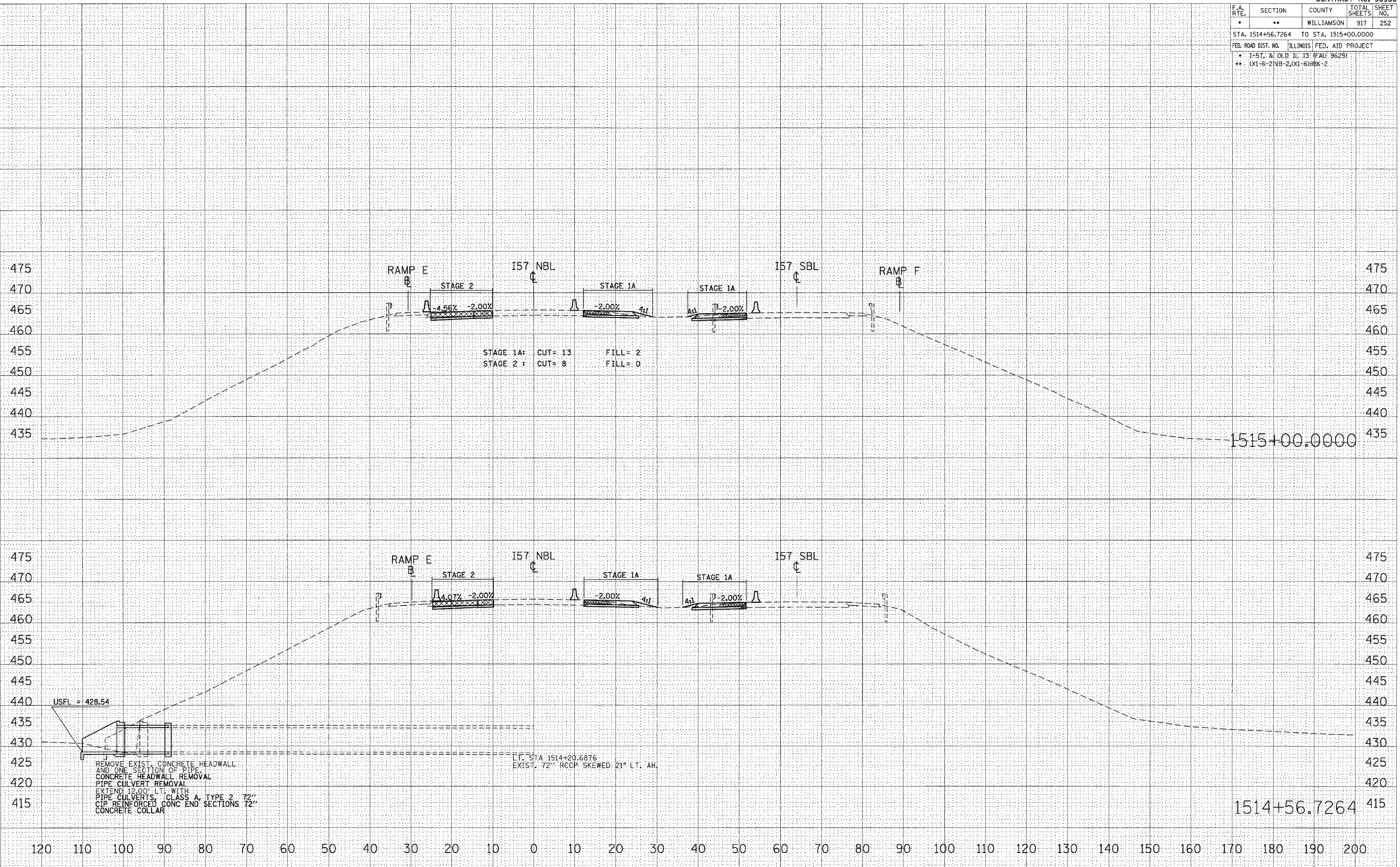


F.A. RTE.	SECTION	COUNTY	TOTAL SHEETS	SHEET NO.
**	**	WILLIAMSON	917	252
STA. 1514+56.7264 TO STA. 1515+00.0000				
FED. ROAD DIST. NO. ILLINOIS FED. AID PROJECT				
* 1-57, & OLD IL. 13 (FAU 3629)				
** (X1-6-2)VB-2,(X1-6)HBK-2				

DATE _____
 BY _____
 SURVEYED _____
 FINAL SURVEY _____
 NOTE BOOK _____
 TEMPLATE _____
 AREAS _____
 CHECKED _____

DATE _____
 BY _____
 ORIGINAL SURVEY _____
 SURVEYED _____
 TEMPLATE _____
 AREAS _____
 CHECKED _____

PLOT DATE = 10/25/2005
 FILE NAME = c:\p\proj\98950\1514+56.7264.dwg
 PLOT SCALE = 1/8" = 1'-0"
 USER NAME = lavenderba



STAGE 1A: CUT= 13 FILL= 2
 STAGE 2 : CUT= 8 FILL= 0

REMOVE EXIST. CONCRETE HEADWALL AND ONE SECTION OF PIPE
 CONCRETE HEADWALL REMOVAL
 PIPE CULVERT REMOVAL
 EXTEND 12.00' LT. WITH
 PIPE CULVERTS, CLASS A, TYPE 2 72"
 CIP REINFORCED CONC END SECTIONS 72"
 CONCRETE COLLAR

L.P. STA 1514+20.6876
 EXIST. 72" RCCP SKEWED 21° LT, AH

STA 1514+56.7264 TO STA 1515+00.0000 I57 NBL STAGES 1, 1A, 2, & 3