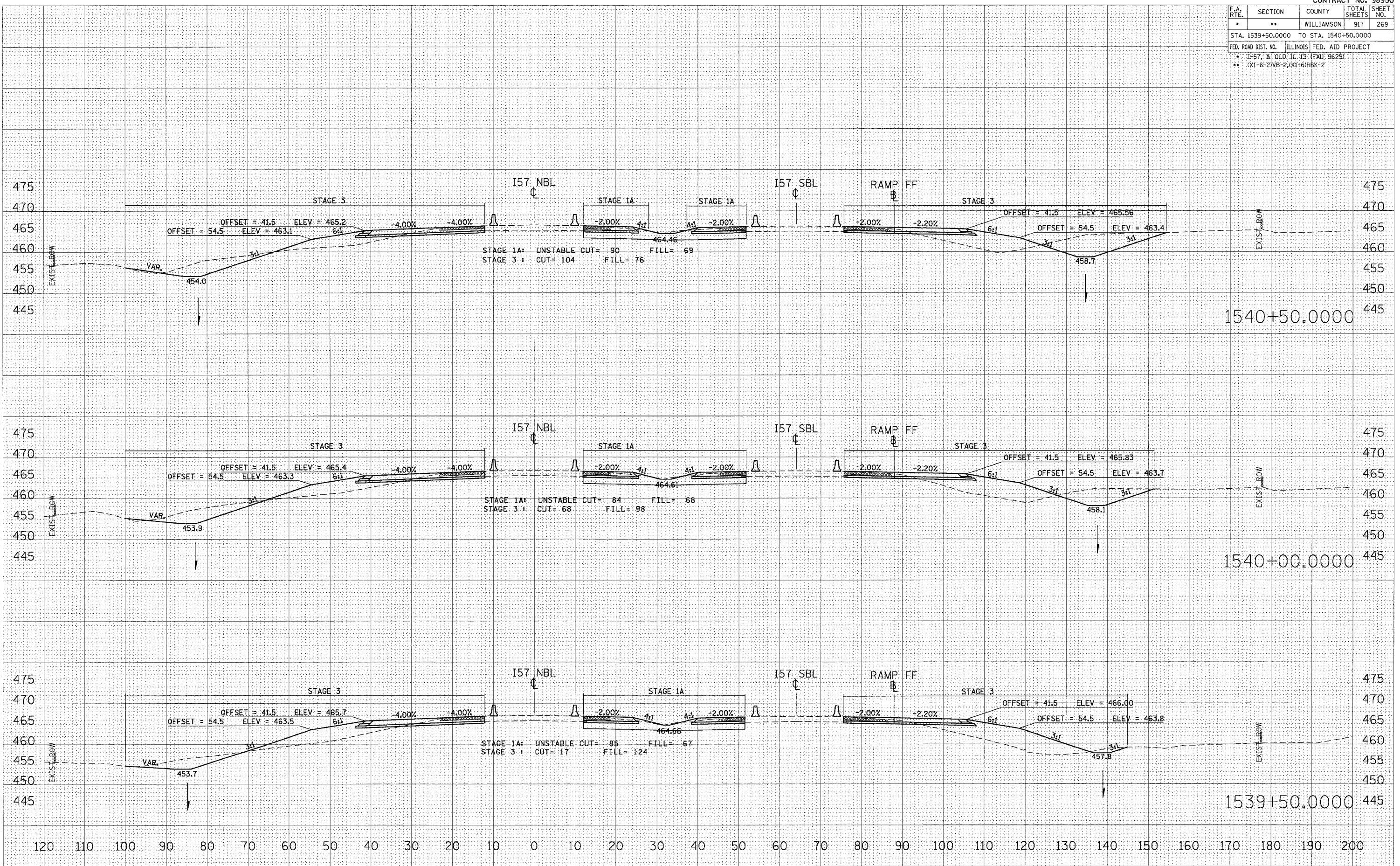


F.A. RTE.	SECTION	COUNTY	TOTAL SHEETS	SHEET NO.
*	**	WILLIAMSON	917	269
STA. 1539+50.0000 TO STA. 1540+50.0000				
FED. ROAD DIST. NO. ILLINOIS FED. AID PROJECT				
* 1-57, & OLD. I.C. 13 (FAI) 9629				
** XI-6-21VB-2, XI-61RBK-2				

DATE	
BY	
NO.	
AREAS CHECKED	
NOTE B	
DATE	
BY	
NO.	
AREAS CHECKED	
NOTE B	
DATE	
BY	
NO.	
AREAS CHECKED	
NOTE B	

DATE	12/12/2006
BY	lefmchd
NO.	10.0000
AREAS CHECKED	
NOTE B	
DATE	
BY	
NO.	
AREAS CHECKED	
NOTE B	
DATE	
BY	
NO.	
AREAS CHECKED	
NOTE B	



STA 1539+50.0000 TO STA 1540+50.0000 I57 NBL STAGES 1, 1A, 2, & 3