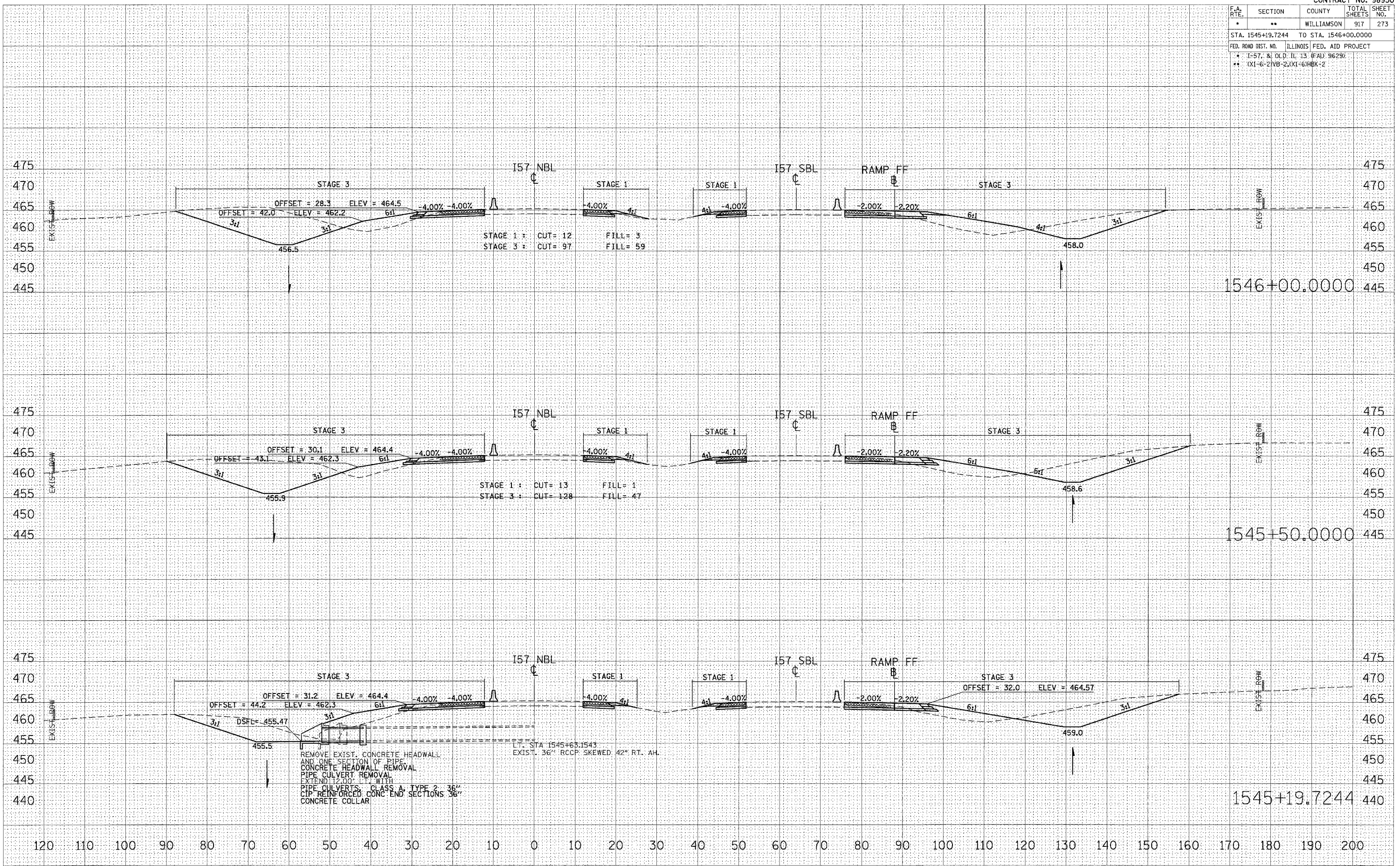


F.A. RTE.	SECTION	COUNTY	TOTAL SHEETS	SHEET NO.
*	**	WILLIAMSON	917	273
STA. 1545+19.7244 TO STA. 1546+00.0000				
FED. ROAD DIST. NO. ILLINOIS FED. AID PROJECT				
* I-57, & OLD IL 13 (FAJ 9629)				
** I(XI)-6-2WB-2, I(XI)-6/HBX-2				

DATE \_\_\_\_\_  
 BY \_\_\_\_\_  
 SURVEYED \_\_\_\_\_  
 PLOTTED \_\_\_\_\_  
 NOTE BOOK \_\_\_\_\_  
 AREAS CHECKED \_\_\_\_\_  
 NO. \_\_\_\_\_

DATE \_\_\_\_\_  
 BY \_\_\_\_\_  
 ORIGINAL SURVEY \_\_\_\_\_  
 PLOTTED \_\_\_\_\_  
 NOTE BOOK \_\_\_\_\_  
 AREAS CHECKED \_\_\_\_\_  
 NO. \_\_\_\_\_



REMOVE EXIST. CONCRETE HEADWALL  
 AND ONE SECTION OF PIPE  
 CONCRETE HEADWALL REMOVAL  
 PIPE CULVERT REMOVAL  
 EXTEND 12'-00" WITH  
 PIPE CULVERTS, CLASS A, TYPE 2, 36"  
 CIP REINFORCED CONC END SECTIONS 36"  
 CONCRETE COLLAR

LT. STA 1545+63.1543  
 EXIST. 36" RCP SKewed 42° RT. AH.

STA 1545+19.7244 TO STA 1546+00.0000 I57 NBL STAGES 1, 1A, 2, & 3