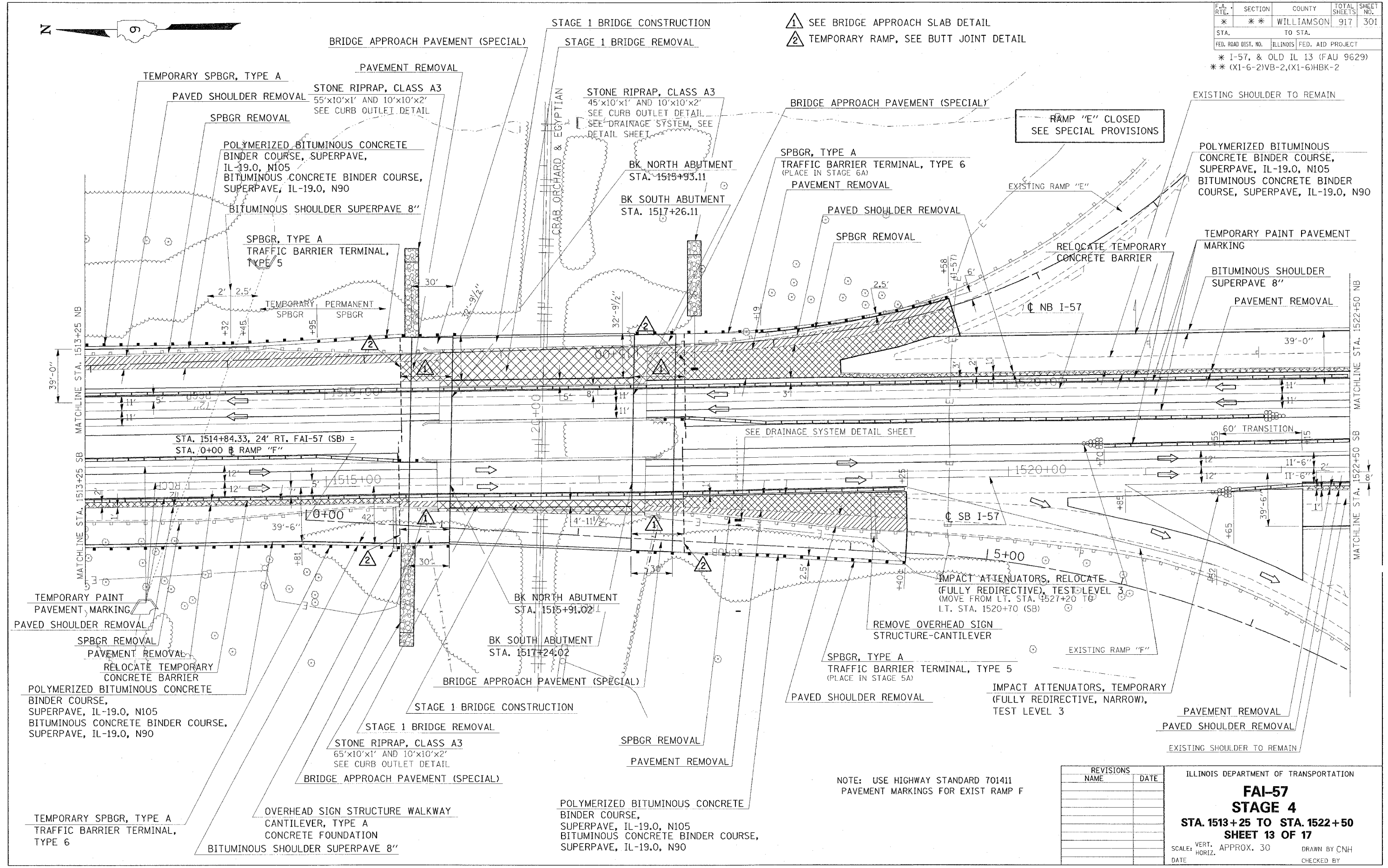


F.A. RTE.	SECTION	COUNTY	TOTAL SHEETS	SHEET NO.
*	*	WILLIAMSON	917	301

STA. TO STA.
 ILLINOIS FED. AID PROJECT
 * I-57, & OLD IL 13 (FAU 9629)
 ** (X1-6-2)VB-2,(X1-6)HBK-2



- ① SEE BRIDGE APPROACH SLAB DETAIL
- ② TEMPORARY RAMP, SEE BUTT JOINT DETAIL



NOTE: USE HIGHWAY STANDARD 701411 PAVEMENT MARKINGS FOR EXIST RAMP F

REVISIONS	
NAME	DATE

ILLINOIS DEPARTMENT OF TRANSPORTATION

FAI-57
STAGE 4
STA. 1513+25 TO STA. 1522+50
SHEET 13 OF 17

SCALE: VERT. APPROX. 30
 DATE: _____ DRAWN BY CNH
 CHECKED BY _____

PLOT DATE = 12/17/2008
 FILE NAME = c:\p\projects\982802\old\1357\stage4.dgn
 PLOT SCALE = 30.0000 / IN.
 USER NAME = heathen