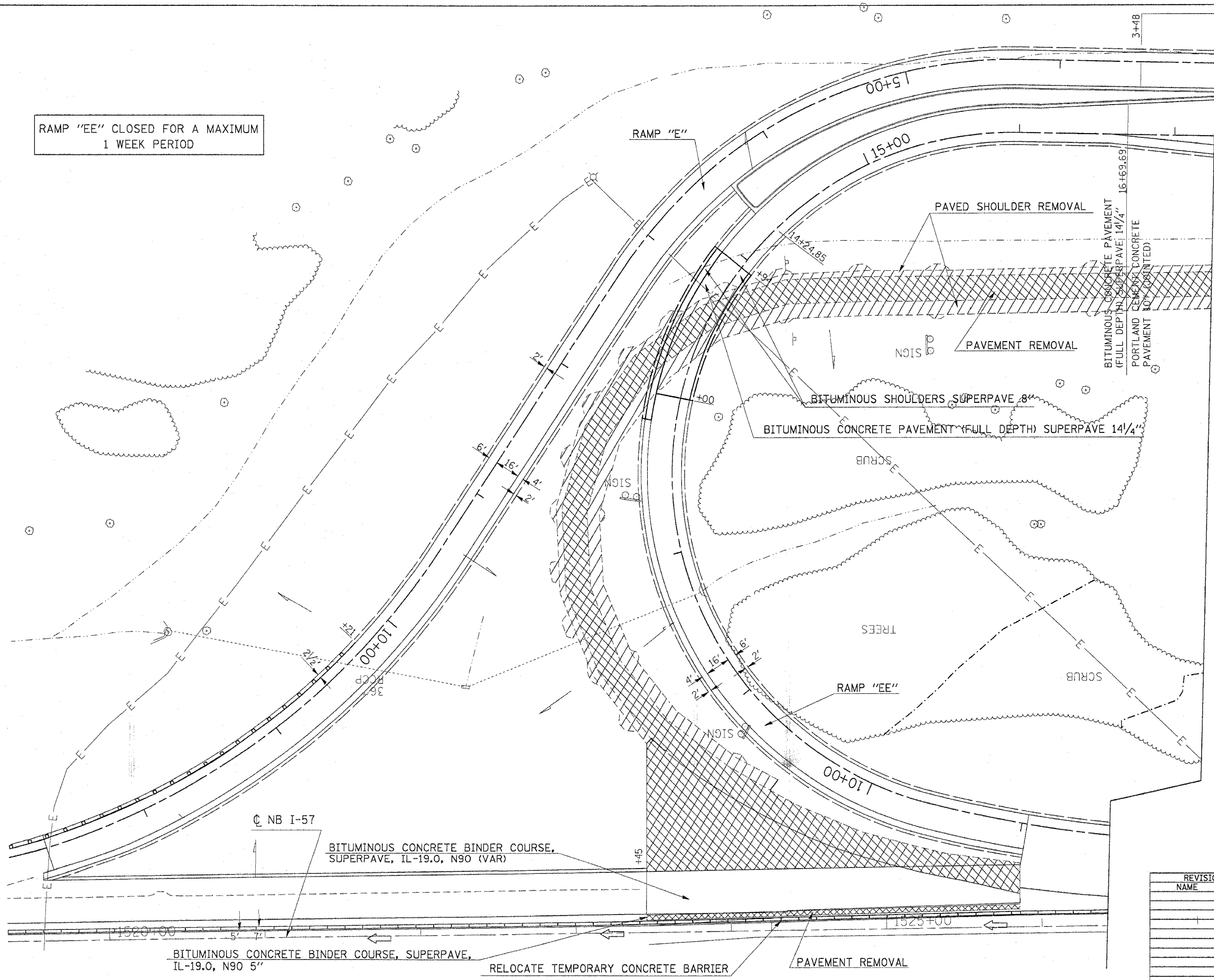


F.A. RTE.	SECTION	COUNTY	TOTAL SHEETS	SHEET NO.
*	*	WILLIAMSON	917	415
STA.		TO STA.		
FED. ROAD DIST. NO.	ILLINOIS	FED. AID PROJECT		
* I-57, & OLD IL 13 (FAU 9629)				
** (X1-6-2)VB-2,(X1-6)HBK-2				

RAMP "EE" CLOSED FOR A MAXIMUM 1 WEEK PERIOD



BITUMINOUS CONCRETE PAVEMENT (FULL DEPTH) SUPERPAVE 14 1/4"
 PORTLAND CEMENT CONCRETE PAVEMENT 10" (JOINTED)

MATCHLINE STAGE 6A AND 6B (SEE SHEET 4 OF 4)

REVISIONS	
NAME	DATE

ILLINOIS DEPARTMENT OF TRANSPORTATION
RAMP "E" AND "EE"
STAGE 6A AND 6B
SHEET 3 OF 4

SCALE: VERT. APPROX. 30
 HORIZ.

DRAWN BY CNH
 CHECKED BY

PLOT DATE = 12/22/2006
 PLOT SCALE = 30/000
 USER NAME = vnc01_jf