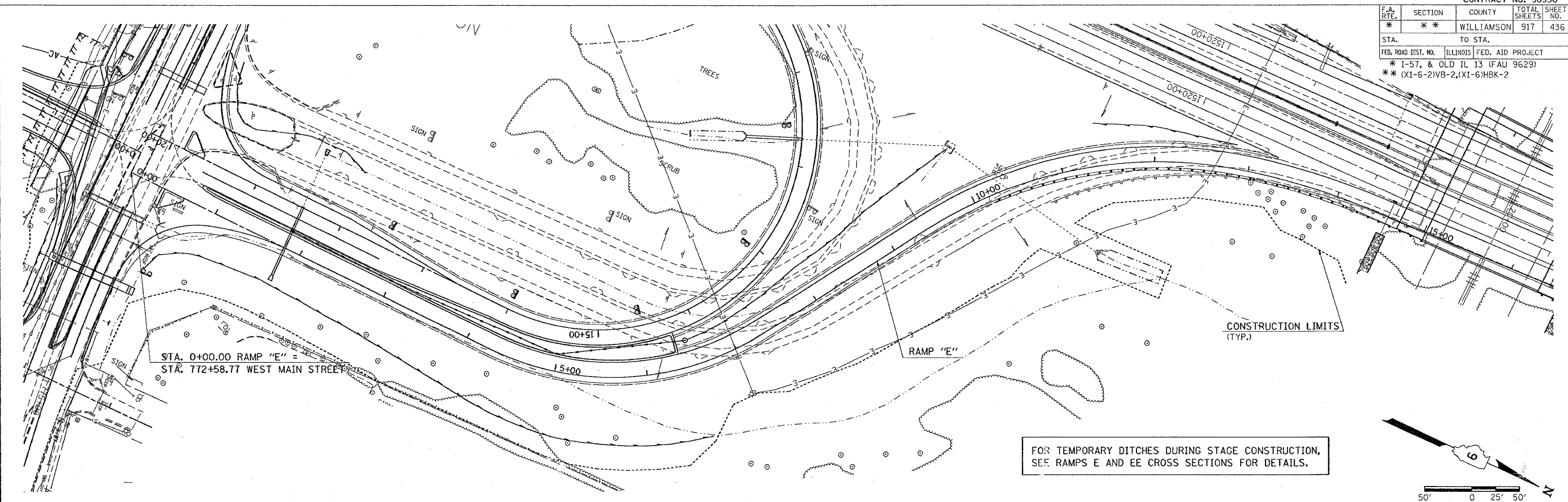
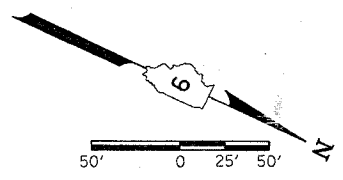


F.A. RTE.	SECTION	COUNTY	TOTAL SHEETS	SHEET NO.
*	*	WILLIAMSON	917	436
STA. TO STA.				
FED. ROAD DIST. NO. ILLINOIS FED. AID PROJECT				
* 1-57, & OLD IL 13 (FAU 9629)				
** (X1-6-2)VB-2,(X1-6)HKB-2				

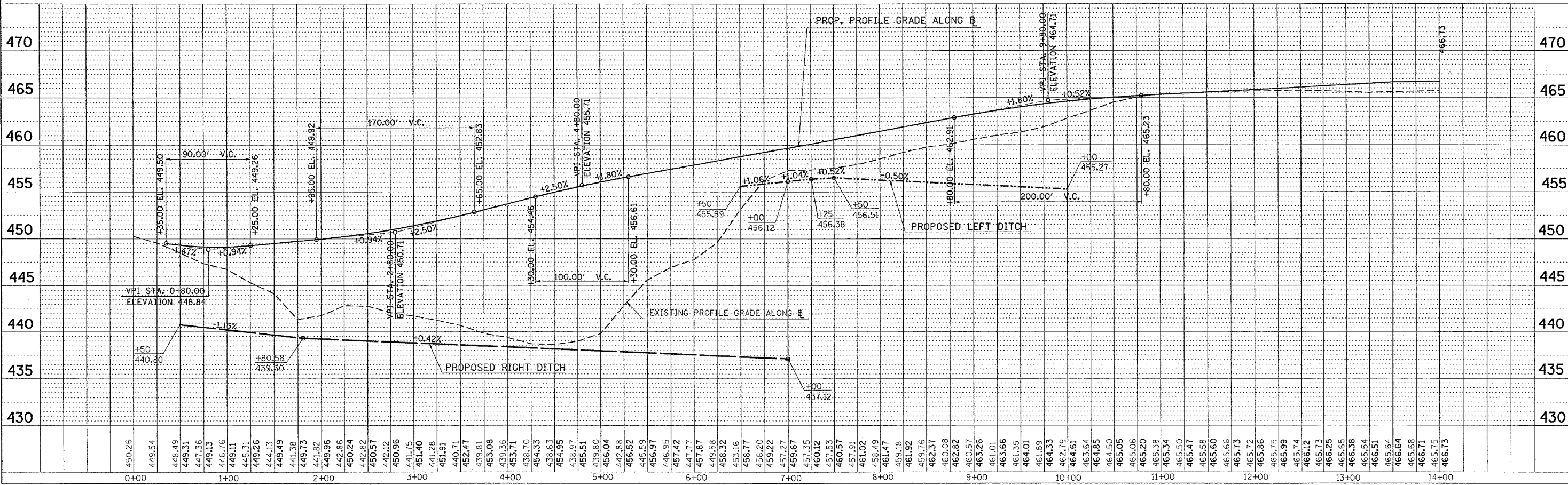
PLAN	SURVEYED	DATE
NOTE BOOK	ALIGNED	
NO.	CHECKED	
	BY	
	DATE	



FOR TEMPORARY DITCHES DURING STAGE CONSTRUCTION, SEE RAMPS E AND EE CROSS SECTIONS FOR DETAILS.



PROFILE	SURVEYED	DATE
NOTE BOOK	GRADES CHECKED	
NO.	BY	
	DATE	



PLOT DATE = 10/24/2006
 FILE NAME = c:\p0\meta\98950\98950.dwg
 PLOT SCALE = 1/4" = 10'-0"
 USER NAME = jason

DITCH PROFILE STA. 0+00 TO STA. 14+00 RAMP "E"