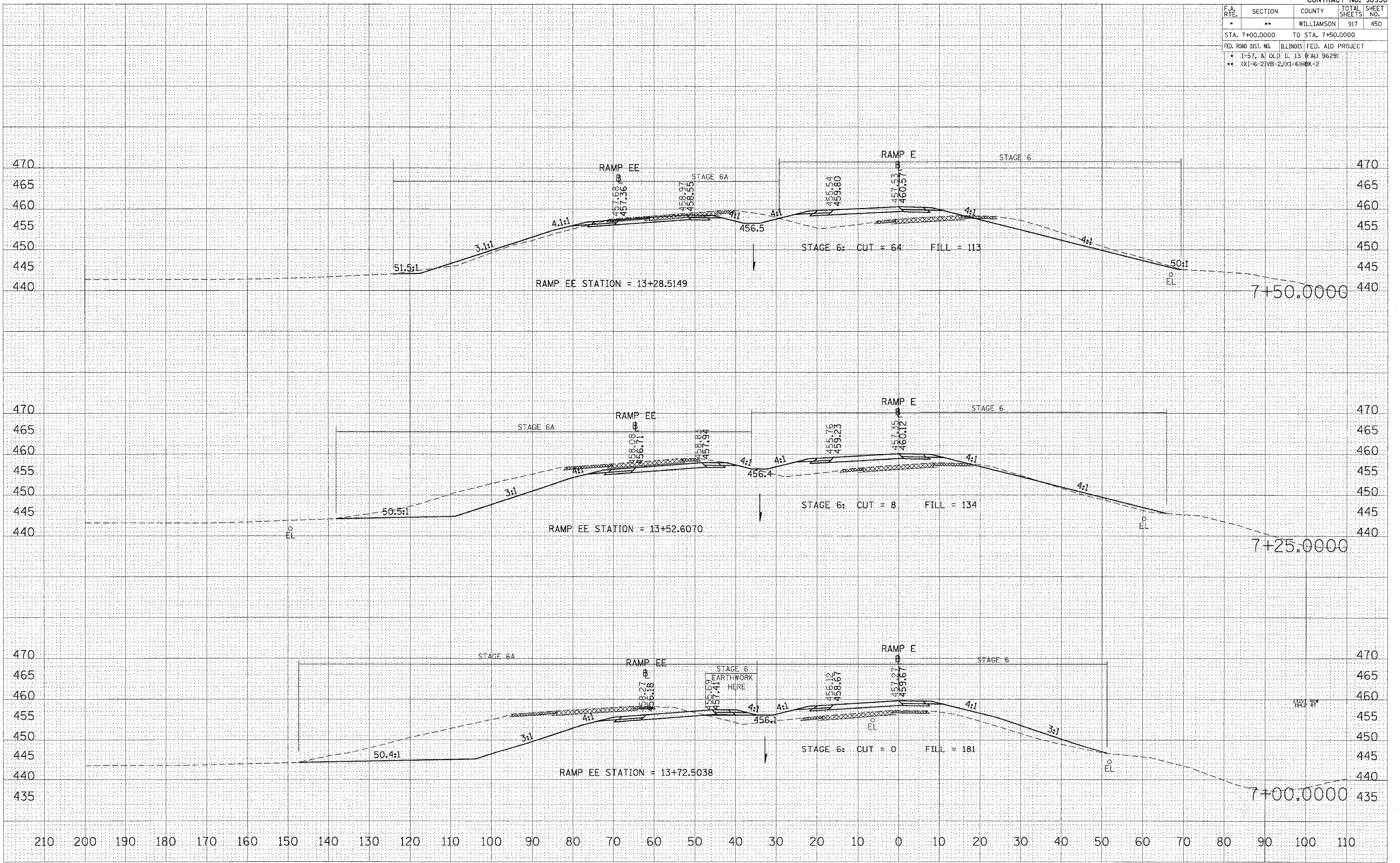


F.A. RTE.	SECTION	COUNTY	TOTAL SHEETS	SHEET NO.
*	**	WILLIAMSON	917	450
STA. 7+00.0000		TO STA. 7+50.0000		
FED. ROAD DIST. NO.		ILLINOIS		FED. AID PROJECT
* I-57, & OLD IL 13 (FAU) 9629				
** OXI-6-21VB-2, XI-61HBK-2				

DATE	BY
SURVEYED	PLOTTED
SURVEY	SCALE
NOTE BOOK	NO.
AREAS CHECKED	

DATE	BY
SURVEYED	PLOTTED
SURVEY	SCALE
NOTE BOOK	NO.
AREAS CHECKED	

PLOT DATE = 10/26/2006
 PLOT SCALE = 1/4" = 100'-0"
 USER NAME = lavenderb



STA 7+00.0000 TO STA 7+50.0000 RAMP E