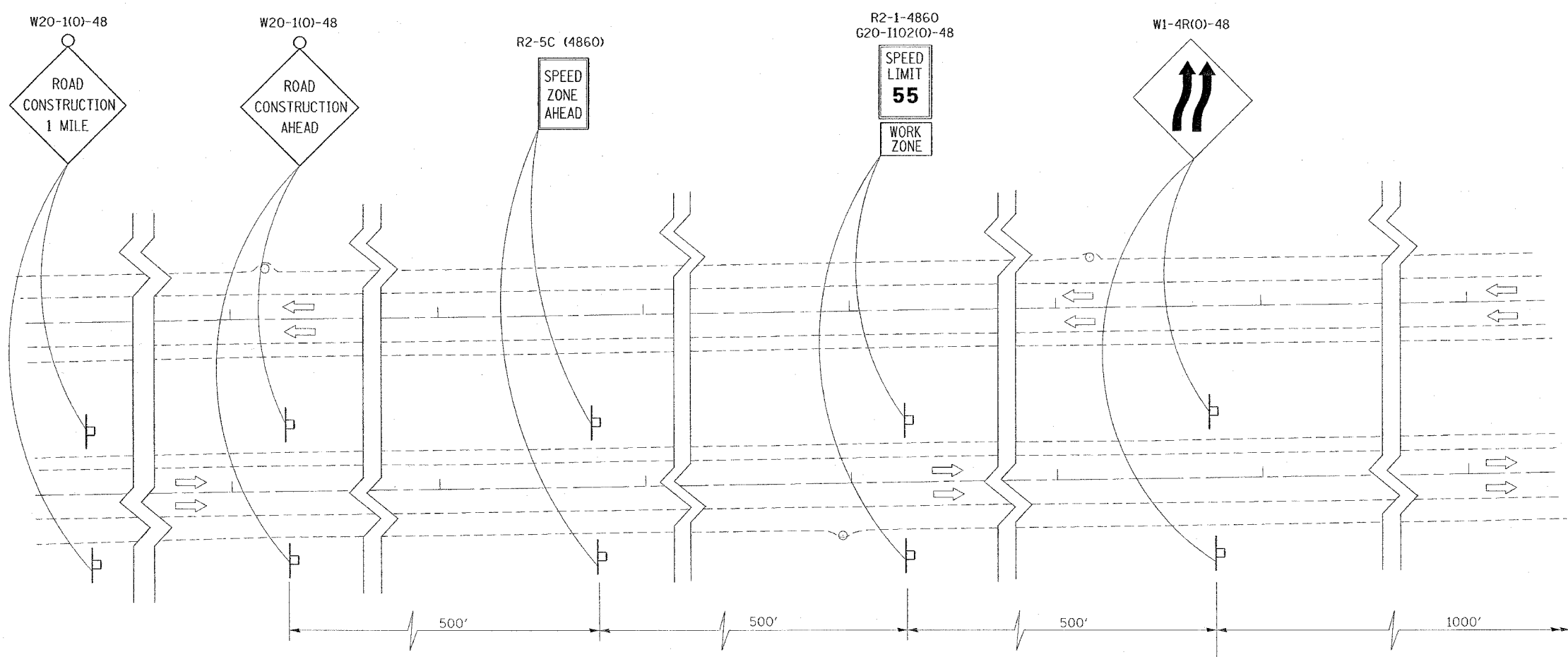


F.A. RTE.	SECTION	COUNTY	TOTAL SHEETS	SHEET NO.
*	**	WILLIAMSON	917	479
STA.		TO STA.		
FED. ROAD DIST. NO.		ILLINOIS FED. AID PROJECT		

\* I-57, & OLD IL 13 (FAU 9629)  
 \*\* (X1-6-2)VB-2,(X1-6)HBK-2



ROAD CONSTRUCTION AHEAD SIGNS SHALL BE PLACED AT TWO (2) MILES AND THREE (3) MILES PRIOR TO THE CONSTRUCTION SITE.

PLOT DATE = 10/17/2006  
 PLOT SCALE = 3/8" = 1'-0"  
 USER NAME = hnsdgn

REVISIONS	
NAME	DATE

ILLINOIS DEPARTMENT OF TRANSPORTATION  
**FAI-57**  
**STAGE 7**  
**SHEET 9 OF 16**

SCALE: VERT. NONE  
 HORIZ. NONE  
 DATE: \_\_\_\_\_  
 DRAWN BY CNH  
 CHECKED BY \_\_\_\_\_