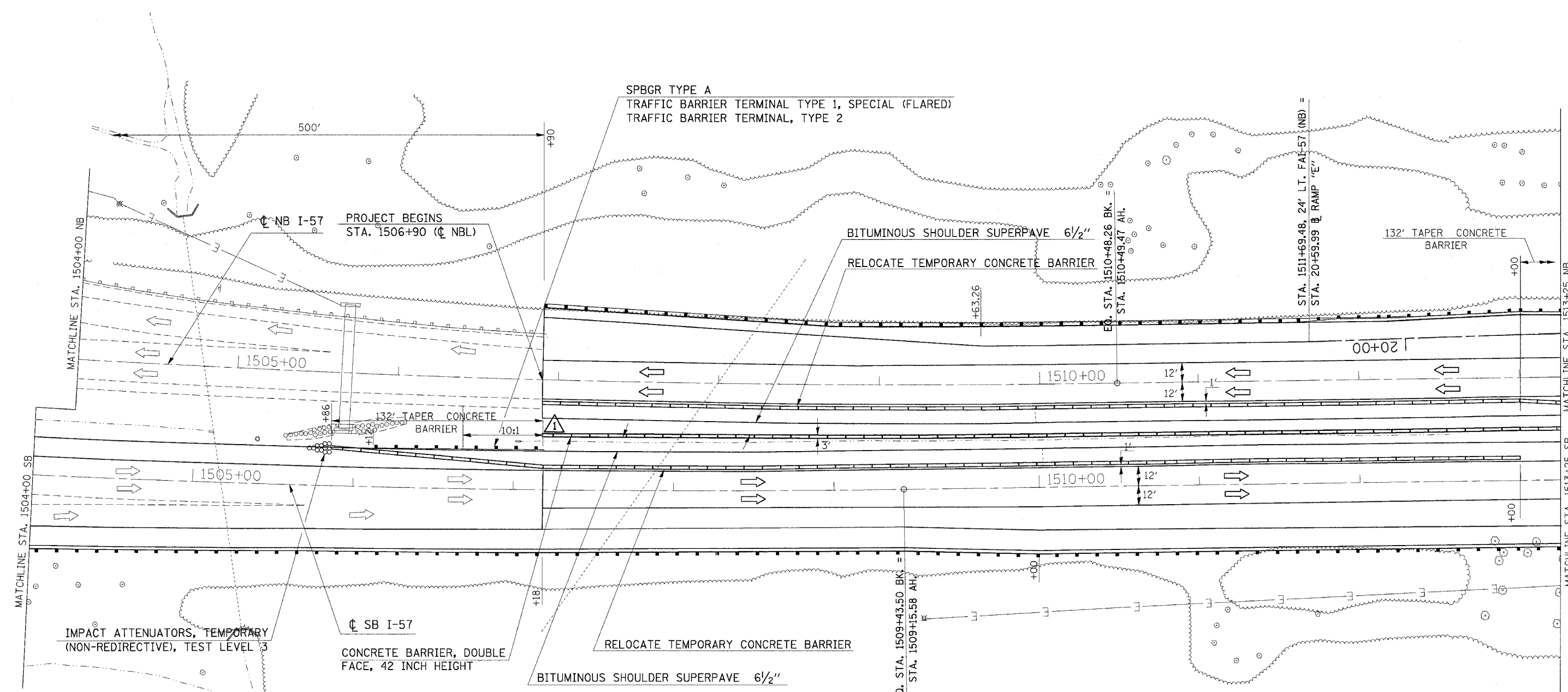


F.A. RTE.	SECTION	COUNTY	TOTAL SHEETS	SHEET NO.
*	*	WILLIAMSON	917	531
STA. TO STA.				
FED. ROAD DIST. NO. ILLINOIS FED. AID PROJECT				
* I-57, & OLD IL 13 (FAU 9629)				
** (X1-6-2)VB-2,(X1-6)HBK-2				



**1** PLACE EARTH AT A MIN. 10:1 SLOPE DOWN FROM THE PROPOSED PAVED MEDIAN TO THE EXISTING GROUND LINE AS DIRECTED BY THE ENGINEER. THIS WORK SHALL BE INCLUDED IN THE COST PER CU. YD. FOR EARTHWORK IN STAGE 7C.

PLOT DATE = 1/16/2007  
 FILE NAME = c:\p\proj\jensu\982882\cadd\57\stage7c.dgn  
 USER NAME = hudson

REVISIONS	
NAME	DATE

ILLINOIS DEPARTMENT OF TRANSPORTATION  
**FAI-57**  
**STAGE 7C**  
**STA. 1504+00 TO STA. 1513+25**  
**SHEET 4 OF 9**  
 SCALE: VERT. APPROX. 30  
 HORIZ. DATE  
 DRAWN BY CNH  
 CHECKED BY