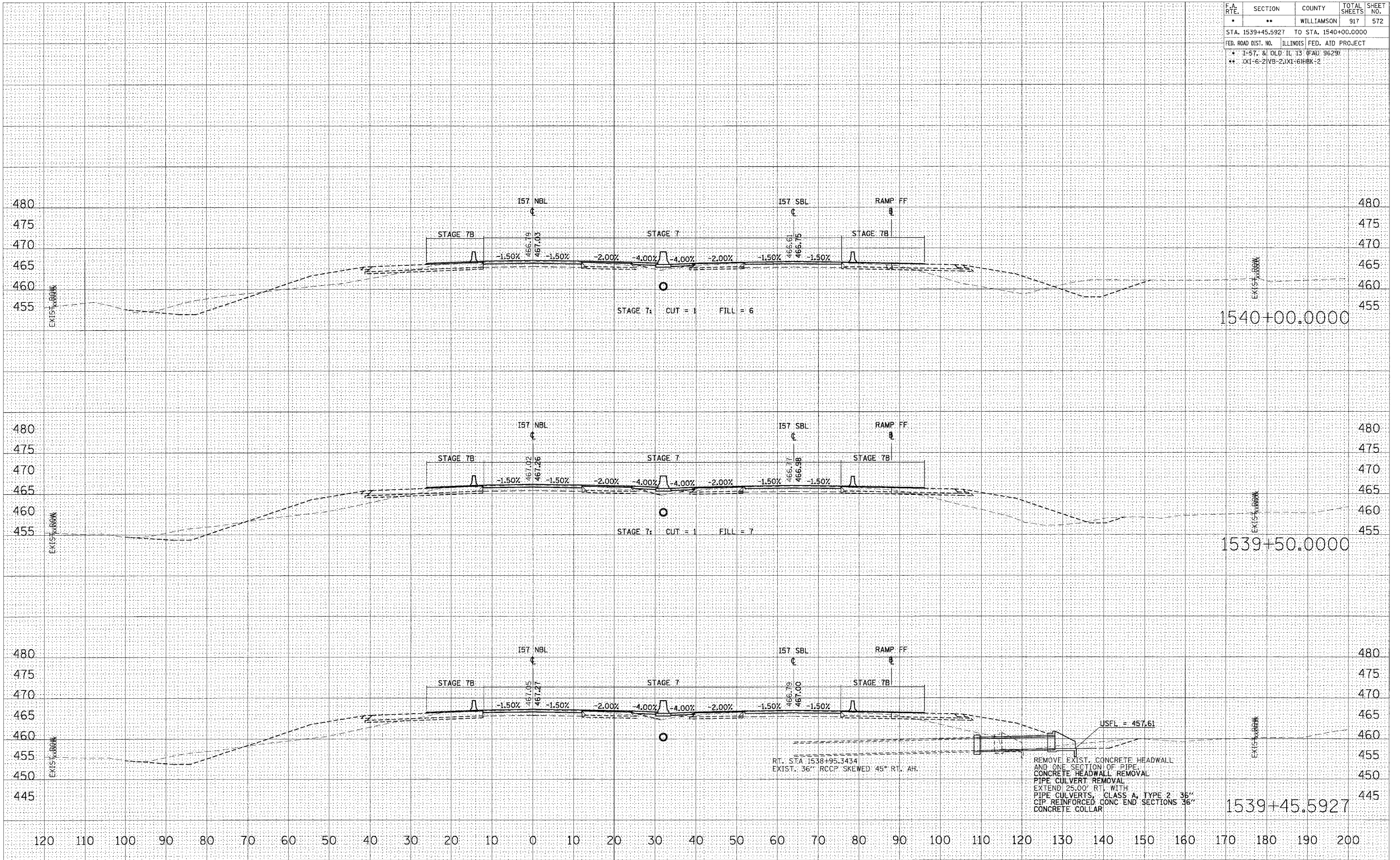


F.A. RTE.	SECTION	COUNTY	TOTAL SHEETS	SHEET NO.
•	••	WILLIAMSON	917	572
STA. 1539+45.5927 TO STA. 1540+00.0000				
FED. ROAD DIST. NO. ILLINOIS FED. AID PROJECT				
* I-57, & OLD IL 13 (FAD 9629)				
** CX1-6-2IVB-2JKI-6IHK-2				

FINAL	SURVEYED	BY	DATE
SHEET	PLOTTED		
NOTE BOOK			
AREAS CHECKED			
NO.			

ORIGINAL	SURVEYED	BY	DATE
SHEET	PLOTTED		
NOTE BOOK			
AREAS CHECKED			
NO.			

PLOT DATE = 12/22/2006
 PLOT SCALE = 1/8" = 100'
 USER NAME = jefmcd



STA 1539+45.5927 TO STA 1540+00.0000 I57 NBL STAGE 7, 7A, 7B & 7C

REMOVE EXIST. CONCRETE HEADWALL
 AND ONE SECTION OF PIPE
 CONCRETE HEADWALL REMOVAL
 PIPE CULVERT REMOVAL
 EXTEND 25.00' RT. WITH
 PIPE CULVERTS, CLASS A, TYPE 2 36"
 CIP REINFORCED CONC END SECTIONS 36"
 CONCRETE COLLAR

USFL = 457.61