

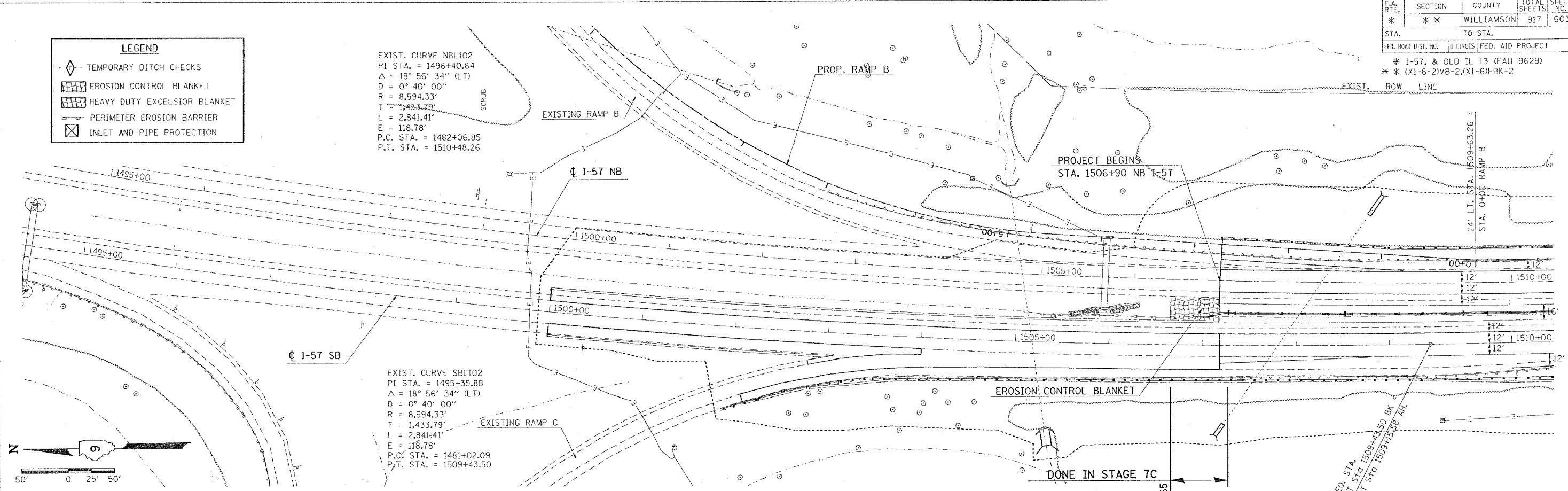
CONTRACT NO. 98950			
F.A. RTE.	SECTION	COUNTY	TOTAL SHEET NO.
*	*	WILLIAMSON	917
603			
STA.	TO STA.		
FED. ROAD DIST. NO.	ILLINOIS FED. AID PROJECT		
* I-57, & OLD IL 13 (FAU 9629)			
** (X1-6-2)VB-2, (X1-6)HBK-2			

**LEGEND**

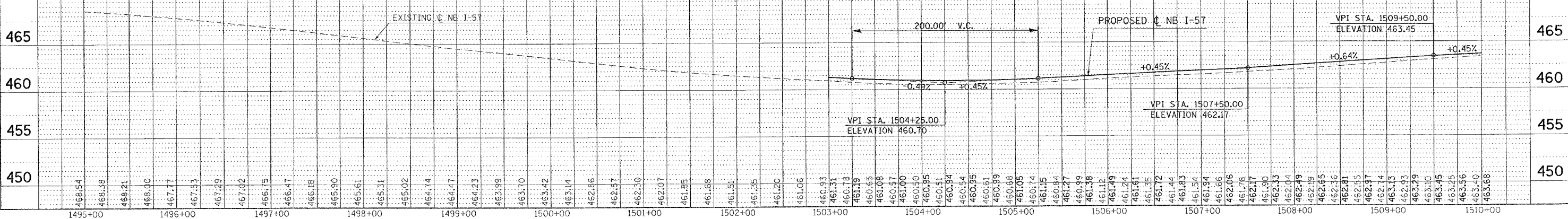
- TEMPORARY DITCH CHECKS
- EROSION CONTROL BLANKET
- HEAVY DUTY EXCELSIOR BLANKET
- PERIMETER EROSION BARRIER
- INLET AND PIPE PROTECTION

EXIST. CURVE NBL102  
 PI STA. = 1496+40.64  
 $\Delta = 18^\circ 56' 34''$  (LT)  
 $D = 0^\circ 40' 00''$   
 $R = 8,594.33'$   
 $T = 1,433.79'$   
 $L = 2,841.41'$   
 $E = 118.78'$   
 P.C. STA. = 1482+06.85  
 P.T. STA. = 1510+48.26

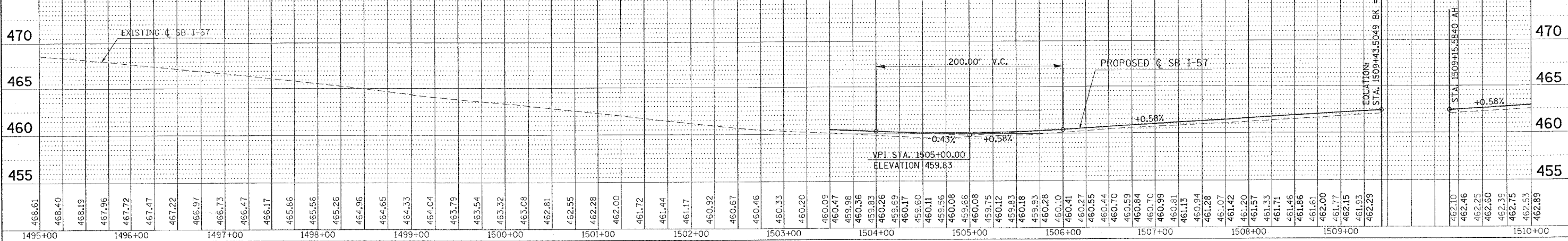
EXIST. CURVE SBL102  
 PI STA. = 1495+35.88  
 $\Delta = 18^\circ 56' 34''$  (LT)  
 $D = 0^\circ 40' 00''$   
 $R = 8,594.33'$   
 $T = 1,433.79'$   
 $L = 2,841.41'$   
 $E = 118.78'$   
 P.C. STA. = 1481+02.09  
 P.T. STA. = 1509+43.50



**NORTHBOUND**



**SOUTHBOUND**



PLAN

DATE	
BY	
CHECKED	
DESIGNED	
NOTED	
NO.	

PROFILE

DATE	
BY	
CHECKED	
DESIGNED	
NOTED	
NO.	

PLOT DATE = 10/20/2006  
 PLOT SCALE = 50.000000' = 1" V.  
 USER NAME = hudson

**TEMPORARY EROSION CONTROL FAI-57 FOR STAGES 7, 7A, 7B, 7C, 8 - STA. 1495+00 TO STA. 1510+00**