

F.A. RTE.	SECTION	COUNTY	TOTAL SHEETS	SHEET NO.
*	*	WILLIAMSON	917	718
STA.		TO STA.		
FED. ROAD DIST. NO.		ILLINOIS FED. AID PROJECT		
* I-57, & OLD IL 13 (FAU 9629)				
** (X1-6-2)VB-2,(X1-6)HBK-2				

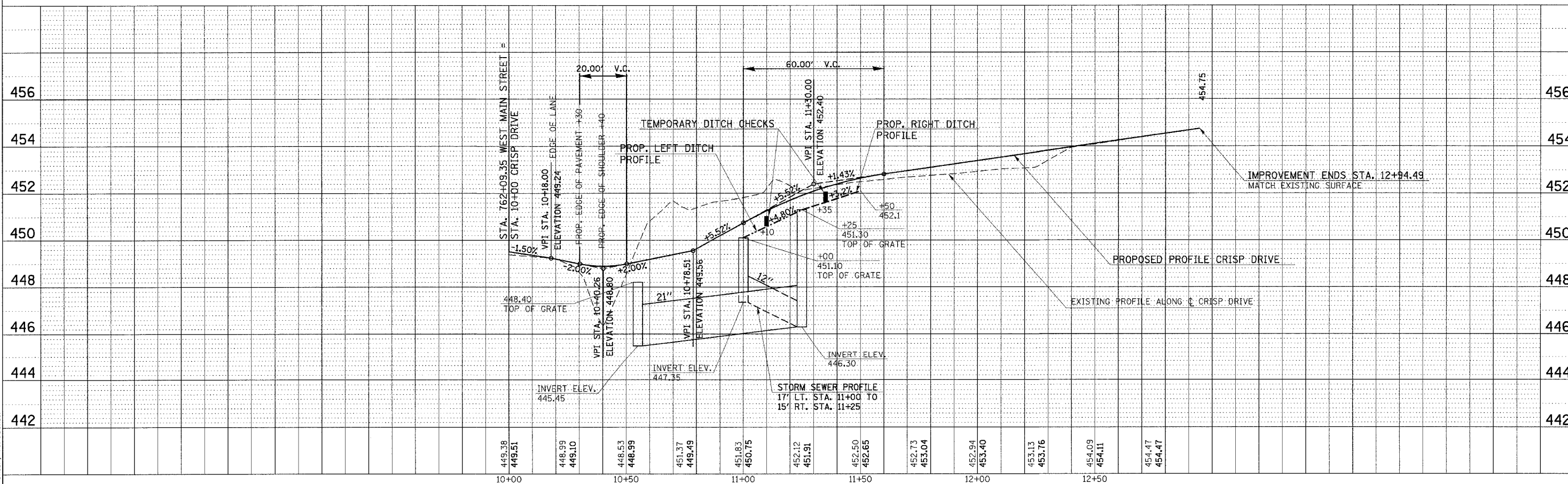
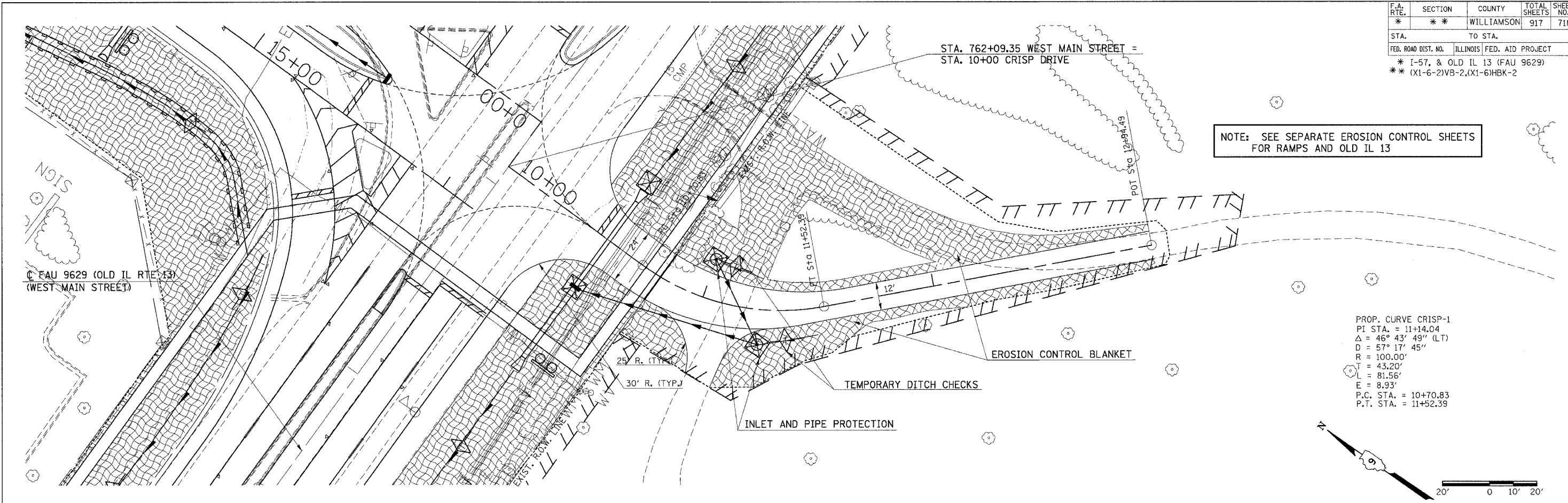
NOTE: SEE SEPARATE EROSION CONTROL SHEETS FOR RAMPS AND OLD IL 13

PROP. CURVE CRISP-1
 PI STA. = 11+14.04
 $\Delta = 46^\circ 43' 49''$ (LT)
 $D = 57' 17' 45''$
 $R = 100.00'$
 $T = 43.20'$
 $L = 81.56'$
 $E = 8.93'$
 P.C. STA. = 10+70.83
 P.T. STA. = 11+52.39

PLAN	DATE
SURVEYED	
ALIGNED	
CHECKED	
NO. OF MAY CHECKED	
NO.	

PROFILE	DATE
SURVEYED	
GRADES CHECKED	
NO. OF MAY CHECKED	
NO.	

PLOT DATE = 12/16/2006
 FILE NAME = c:\pccrisp\15\d302802\vd31\vd3132.dgn
 PLOT SCALE = 20.0000 / IN
 USER NAME = headon
 CRISP, TPOCCRISP



EROSION CONTROL STA. 10+00 TO STA. 12+94.49 CRISP DRIVE