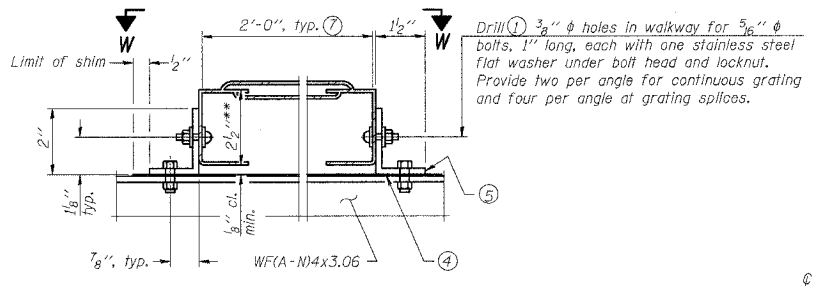
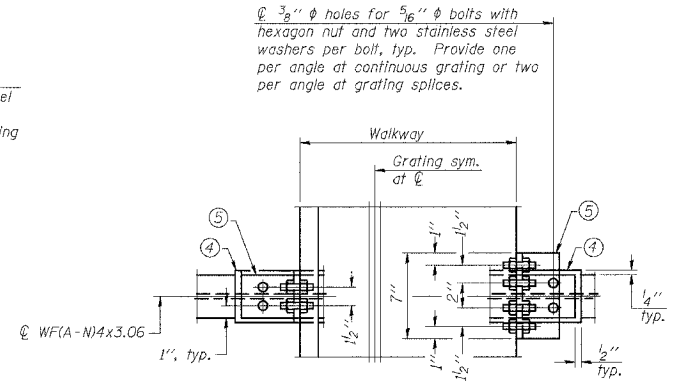


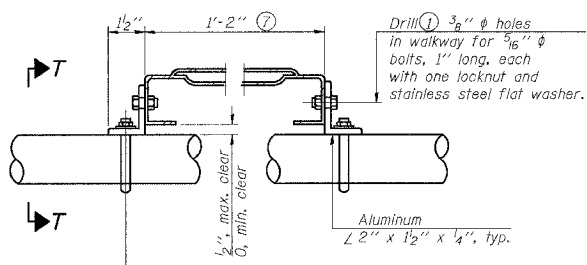
**SECTION B-B**



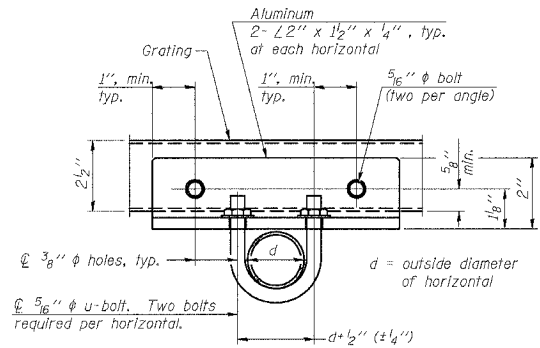
**DETAIL W  
GALVANIZED STEEL WALKWAY GRATING**



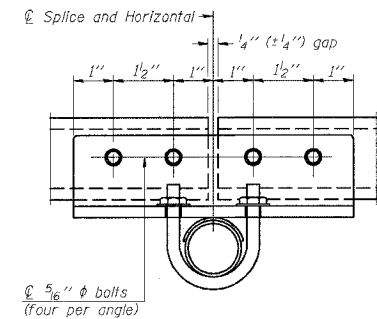
**WALKWAY GRATING CONTINUOUS AT WALKWAY GRATING SPLICE  
SECTION W-W**



**DETAIL T  
(Truss Grating at Horizontal)**



**SECTION T-T  
(Truss Grating Continuous)**



**SECTION T-T  
(Truss Grating Splice)**  
Details not shown same as Section T-T. Alternate splice details and locations may be used subject to the Engineer's review and approval.

- Drilling holes in grating may be done in shop or field, based on Contractor's preference and subject to accurate alignment.
- When truss grating must be spliced, use suggested details or other methods in accord with grating manufacturer's recommendation and subject to the Engineer's review and approval.
- 1/2" x 1/2" x 2" welded to handrail posts to protect locations that contact grating.
- 1/8" (or 16 ga.) x 2 1/2" x 4" stainless steel shim adhered to top of WFCA-N4x3.06 beneath each galvanized angle, typ. Adhesives for shims shall be suitable for materials joined and full exposure conditions.
- Galvanized steel L 2" x 1 1/2" x 1/4", 3 1/2" long with continuous grating 7 1/2" long at grating splice.
- Details shown are considered equal alternatives to Aluminum Walkway Details and may be substituted by Contractor at no charge in contract cost.
- Perforated or expanded metal grating providing a skid resistant (non-serrated) surface and capable of supporting a 500 pound concentrated load with a 6'-0" clear span. Walkway and truss grating dimensions are nominal and may vary (width ± 1/2", depth ± 1/2") based on available standard sizes. Cut ends of grating shall be free of burrs or hazardous projections and coated with zinc-rich primer or equivalent.

**ALUMINUM TRUSS GRATING**

Structure Number	Station	A	B	C	D
9C100I057R53.1	1515+50	7'	6'	5'-6"	12'

NUMBER	REVISION	DATE

OSC-A-7S 1-7-05

REVISIONS		ILLINOIS DEPARTMENT OF TRANSPORTATION
NAME	DATE	
		<b>CANTILEVER SIGN STRUCTURES ALTERNATE WALKWAY DETAILS</b>
SCALE: VERT. NONE HORIZ. DATE	DRAWN BY CNH CHECKED BY	

DATE = 12/13/2006  
FILE NAME = c:\prow\proj\98950\osc-a-7s.dgn  
PLOT SCALE = 56.8000 / 1 IN.  
USER NAME = headen