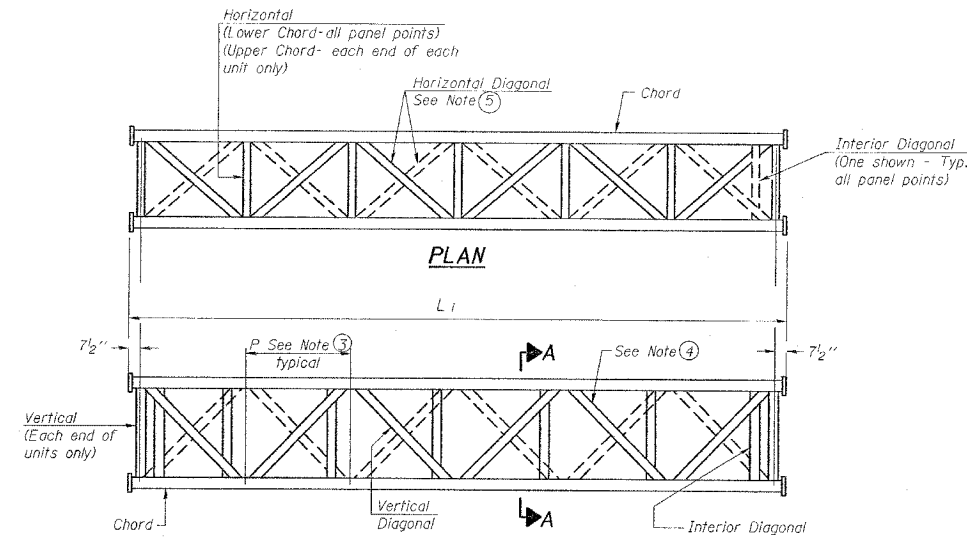
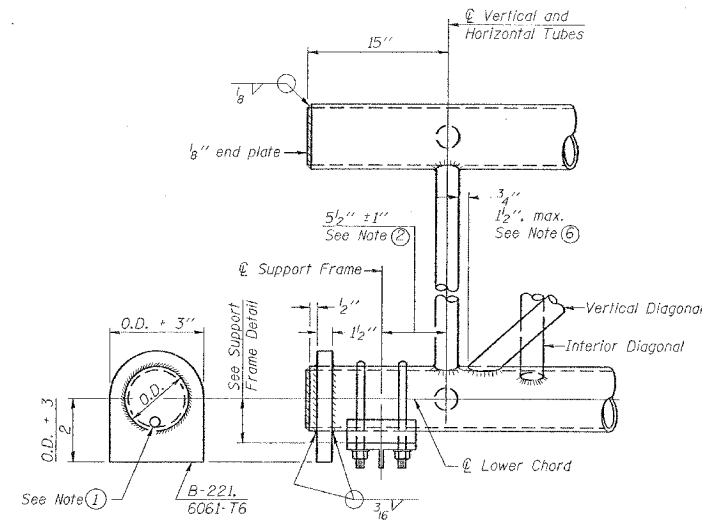


F.A. RTE.	SECTION	COUNTY	TOTAL SHEETS	SHEET NO.
*	**	WILLIAMSON	917	752
STA.		TO STA.		
FED. ROAD DIST. NO.		ILLINOIS FED. AID PROJECT		
		* I-57, & OLD IL 13 (FAU 9629)		
		** (X1-6-2)VB-2,(X1-6)HBK-2		

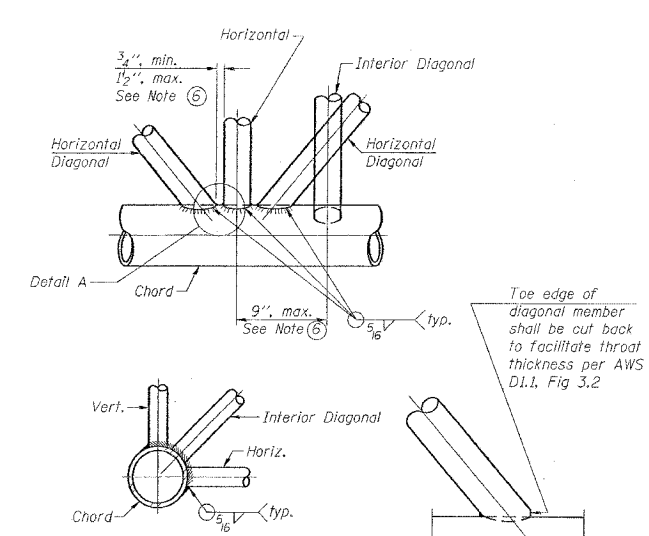


**ELEVATION  
TYPICAL INTERIOR UNIT**

Even number of panels/interior unit required.

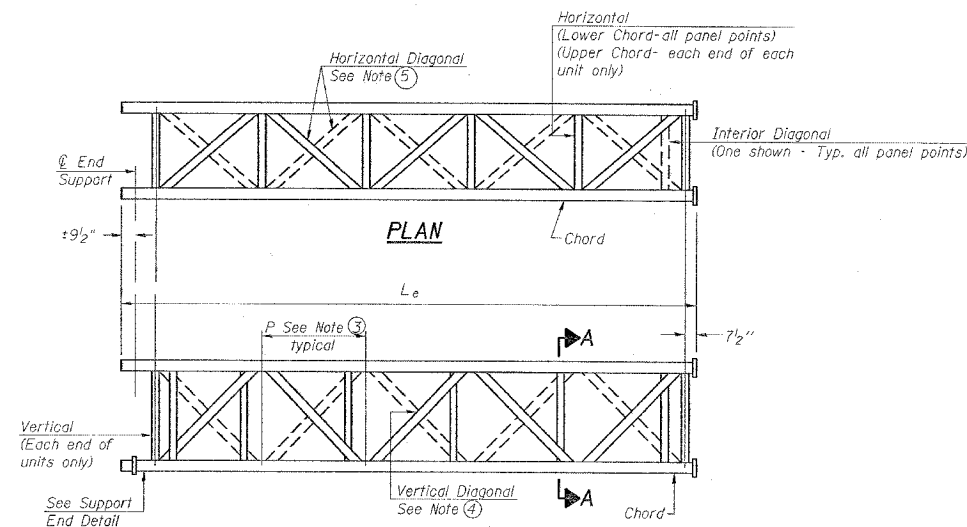


**SUPPORT END DETAIL FOR EXTERIOR UNIT**



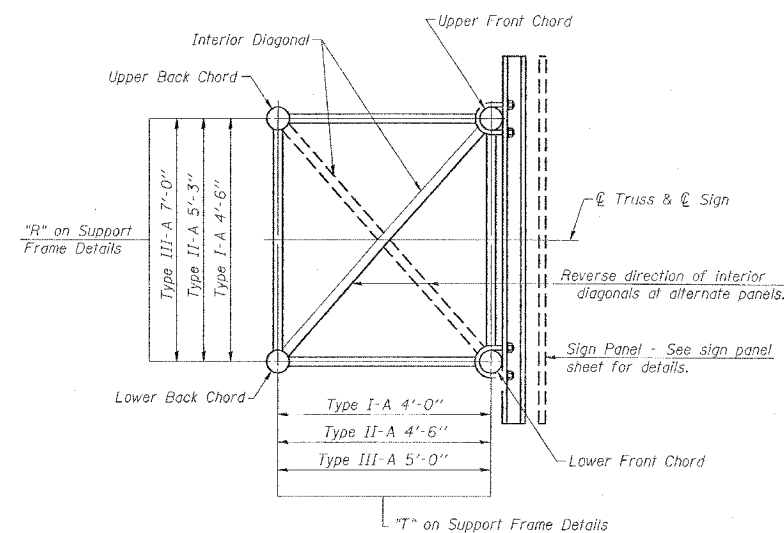
**TYPICAL JOINT DETAILS**

**DETAIL A**



**ELEVATION  
TYPICAL EXTERIOR UNIT**

Even or odd number of panels/exterior units allowed.



**SECTION A-A**

**NOTES**

- Contractor may alternatively use standard aluminum drive-fit cap to close end. 1/2" diameter drain hole in end plate/drive-fit cap. (Typ. at ends of all chords)
- 5 1/2" end dimension may vary by ±1" to provide uniform panel spacing (P).
- Panel spacing (P) shall be uniform for entire truss and between 4'-0" and 5'-0" for Type I-A or 4'-0" and 5'-6" for Types II-A and III-A.
- Vertical Diagonals in front and back face shall alternate.
- Hidden lines show wind bracing alternates direction between planes of top and bottom chords.
- All diagonals shall be detailed for minimum offset from the panel point based on the following: Offset shall be such as to provide a 3/4" minimum to 1 1/2" maximum clearance between any diagonal and any horizontal or vertical member, and to provide clearance for U-bolt connections of signs or walkway brackets.

NUMBER	REVISION	DATE

OS-A-2 1-7-05

DATE = 10/12/2005  
 FILE NAME = C:\Users\jhe2802\Documents\13\131313.dwg  
 PLOT SCALE = 50.0000 / IN.  
 USER NAME = heath

REVISIONS		ILLINOIS DEPARTMENT OF TRANSPORTATION
NAME	DATE	
		<b>OVERHEAD SIGN STRUCTURES                      ALUMINUM TRUSS DETAILS                      FOR TRUSS TYPES I-A, II-A and III-A</b>

SCALE: VERT. NONE  
 HORIZ. DATE DRAWN BY CNH  
 CHECKED BY