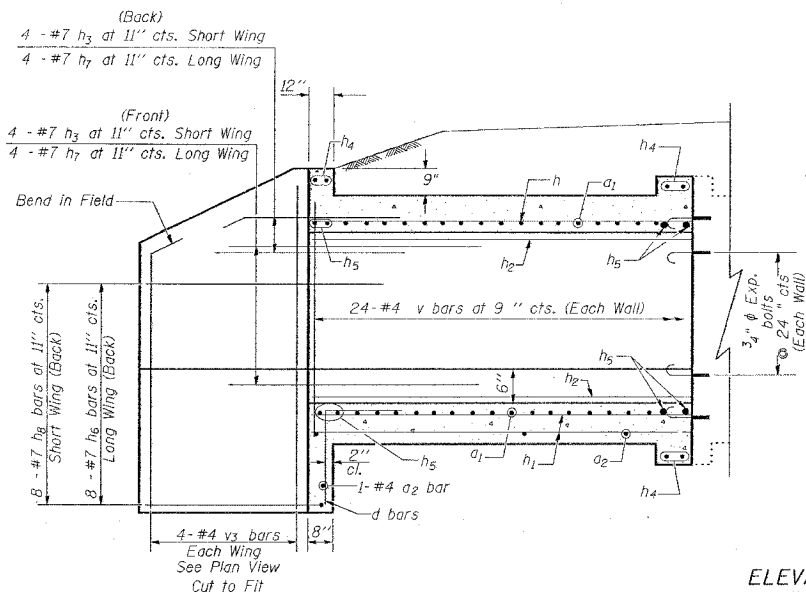


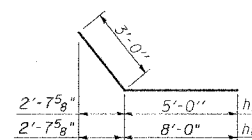
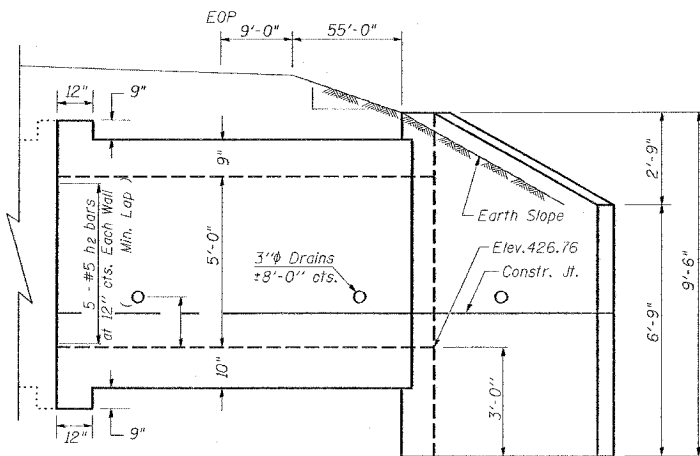
STATE OF ILLINOIS  
DEPARTMENT OF TRANSPORTATION

CONTRACT NO. 98950				
F.A.I. RT. NO.	SECTION	COUNTY	TOTAL SHEETS	SHEET NO.
*	**	WILLIAMSON	917	773
STA.		TO STA.		
FED. ROAD DIST. NO.	ILLINOIS	FED. AID PROJECT		
* 1-57, & OLD IL 13 (FAU 9629)				
** (X1-6-2)VB-2, (X1-6)HBK-2				

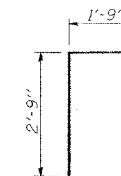


ELEVATION

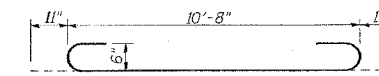
Dimensions at Rt. L's to Roadway



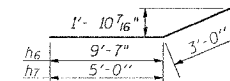
BARS h<sub>3</sub> & h<sub>8</sub>



BAR d

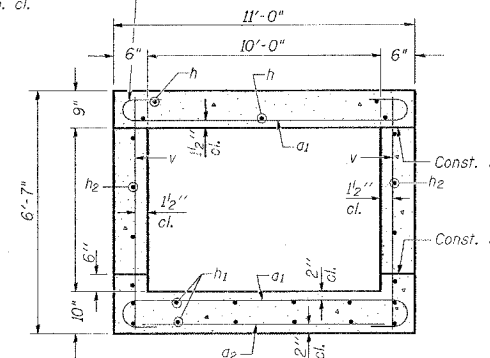


BAR a<sub>1</sub>

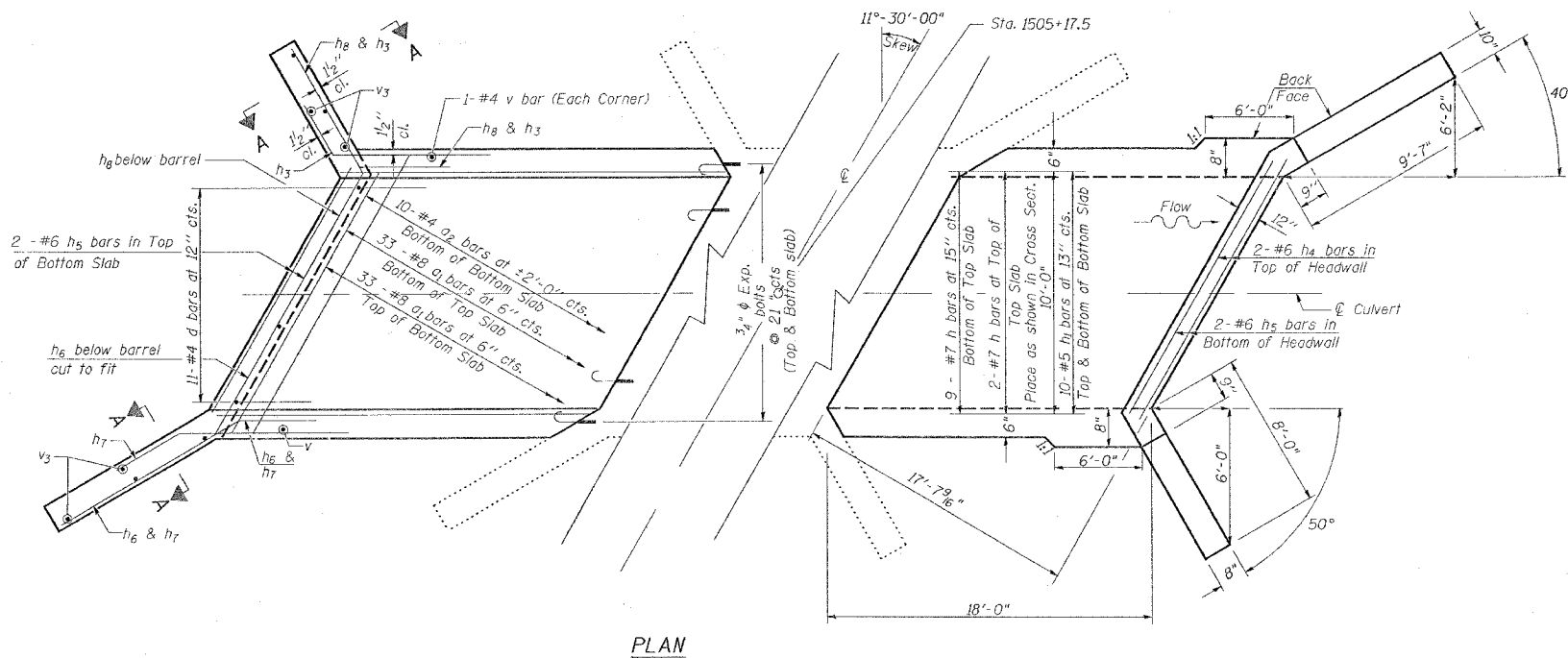


BARS h<sub>6</sub> & h<sub>7</sub>

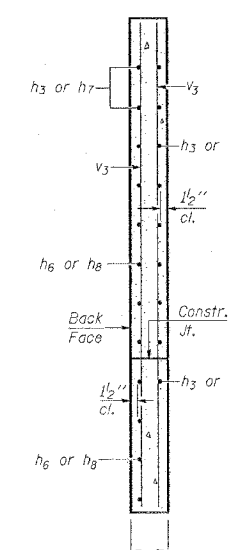
Tilt hook of a<sub>1</sub> bars if necessary for 1 1/2\"/>



SECTION THRU BARREL



PLAN



SECTION A-A

BILL OF MATERIAL

Bar	No.	Size	Length	Shape
a <sub>1</sub>	62	#8	12'-7"	U
a <sub>2</sub>	10	#4	10'-6"	U
d	11	#4	4'-6"	U
h	11	#7	17'-9"	—
h <sub>1</sub>	20	#5	17'-9"	—
h <sub>2</sub>	10	#5	17'-9"	—
h <sub>3</sub>	8	#7	8'-0"	—
h <sub>4</sub>	6	#6	11'-0"	—
h <sub>5</sub>	8	#6	11'-7"	—
h <sub>6</sub>	8	#7	12'-7"	—
h <sub>7</sub>	8	#7	8'-0"	—
h <sub>8</sub>	8	#7	11'-0"	—
v	48	#4	6'-3"	—
v <sub>1</sub>	8	#4	8'-0"	—
Concrete Removal Long Wingwall				Cu. Yd. 3.1
Concrete Removal Short Wingwall				Cu. Yd. 2.5
Concrete Box Culverts				Cu. Yd. 21.0
Reinforcement Bars				Pound 4,435
3/4" Expansion bolts				Each 18

NOTES

Reinforcement Bars shall conform to the requirements of AASHTO M-31, M-42 or M-53, Grade 60.

A distance of half the length of the wingwall but not less than six feet of the barrel shall be poured monolithically with the wingwalls.

All construction joints shall be bonded.

Expansion bolts shall be 3/4" x 12" hooked bolts. Hooked bolts shall extend a minimum of 9" into new concrete and have a minimum certified proof load of 4,080 lbs.

No extension to the left. Just shown for reinforcement, Information Only.

DESIGN STRESSES

f<sub>y</sub> = 60,000 psi

f'c = 3,500 psi

LOADING HS 20-44 & ALT.

REVISIONS	
NAME	DATE

ILLINOIS DEPARTMENT OF TRANSPORTATION

**BOX CULVERT EXTENSION**  
**RT. STATION 1505+17.5 (SB)**  
**10' x 5', SKEW 11°-30'-0" RT. AH.**  
**EXTEND 18'-0"**

SCALE: VERT. NO SCALE  
HORIZ.

DRAWN BY CNH  
CHECKED BY

PLOT DATE: 10/12/2006  
FILE NAME: c:\p06\proj\98950\282\old\3\old\3a.dgn  
PLOT SCALE: 1/8"=1'-0"  
USER NAME: f\_hedden

REVISIONS	
DRAWN	2-04
REVISED	
REVISED	
REVISED	

BASED ON: SSB-H-R 6-1-2000