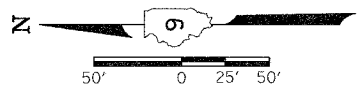
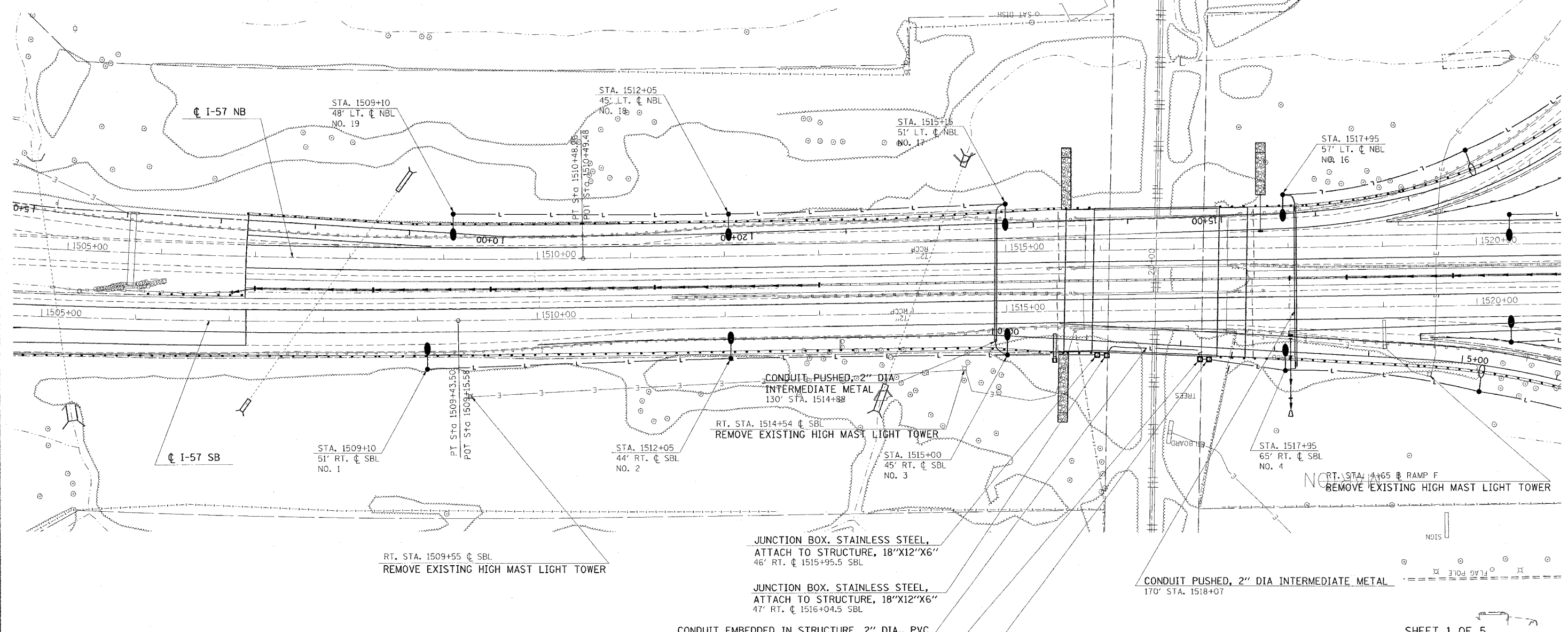


F.A. RTE.	SECTION	COUNTY	TOTAL SHEETS	SHEET NO.
*	**	WILLIAMSON	917	779
STA.		TO STA.		
FED. ROAD DIST. NO.		ILLINOIS FED. AID PROJECT		
* I-57, & OLD IL 13 (FAU 9629)				
* (X1-6-2)VB-2,(X1-6)HBK-2				



**LIGHTING SYMBOL LEGEND**

- LIGHTING CONTROLLER
- JUNCTION BOX, STAINLESS STEEL
- LUMINAIRE, 400 WATT HPS, 50 FT. MOUNTING HEIGHT. LUMINAIRES ON BRIDGE SHALL HAVE 3 FT. DAVIT ARM, ALL OTHERS SHALL HAVE 15 FT. DAVIT ARM
- LUMINAIRE, 250 WATT HPS, 45 FT. MOUNTING HEIGHT, 15 FT. DAVIT ARM
- CONDUIT PUSHED, INTERMEDIATE METAL
- CABLE IN UNIT DUCT. SEE WIRING DIAGRAMS FOR SIZES
- UNDERPASS LIGHTING UNIT. ALL CONDUIT AND WIRE TO UNDERPASS LIGHTING UNITS SHALL BE INCLUDED WITH THE UNDERPASS LIGHTING UNITS AND SHALL BE PAID FOR AT THE CONTRACT UNIT PRICE EACH FOR "UNDERPASS LIGHTING UNIT, 150 WATT HPS". NO ADDITIONAL COMPENSATION WILL BE ALLOWED.



- JUNCTION BOX, STAINLESS STEEL, ATTACH TO STRUCTURE, 18"X12"X6" 46' RT.  $\phi$  1515+95.5 SBL
- JUNCTION BOX, STAINLESS STEEL, ATTACH TO STRUCTURE, 18"X12"X6" 47' RT.  $\phi$  1516+04.5 SBL
- CONDUIT EMBEDDED IN STRUCTURE, 2" DIA., PVC
- JUNCTION BOX, STAINLESS STEEL, ATTACH TO STRUCTURE, 18"X12"X6" 52' RT.  $\phi$  1517+04.5 SBL
- JUNCTION BOX, STAINLESS STEEL, ATTACH TO STRUCTURE, 18"X12"X6" 53.5' RT.  $\phi$  1517+14 SBL

REVISIONS	
NAME	DATE

ILLINOIS DEPARTMENT OF TRANSPORTATION

**LIGHTING**

**I-57**

**STA. 1505+00 TO STA. 1520+00**

SCALE: VERT. 50  
DATE: \_\_\_\_\_

DRAWN BY CNH  
CHECKED BY LA

PLOT DATE = 11/28/2008  
 FILE NAME = c:\p\projects\982922\1513\1513.dgn  
 PLOT SCALE = 50.0000 / IN.  
 USER NAME = leedon