

F.A. RTE.	SECTION	COUNTY	TOTAL SHEETS	SHEET NO.
*	**	WILLIAMSON	917	804

STA. TO STA.  
 FED. ROAD DIST. NO. ILLINOIS FED. AID PROJECT

\* I-57, & OLD IL 13 (FAU 9629)  
 \*\* (X1-6-2)VB-2,(X1-6)HBK-2

### DETAIL OF DETECTOR LOOPS

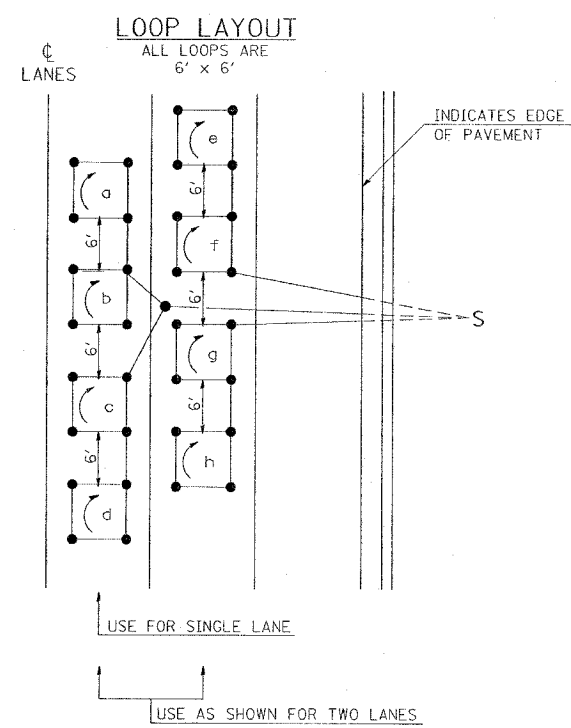
#### NOTES

(APPLIES TO 6' x 6' LOOPS ONLY)

1. THE DETECTOR LOOPS SHALL BE TYPE I. EACH DETECTOR LOOP SHALL HAVE 3 TURNS OF LOOP WIRE AND BE INSTALLED IN ACCORDANCE WITH THE APPLICABLE PORTIONS OF SECTION 886 OF THE STANDARD SPECIFICATIONS FOR TRAFFIC CONTROL ITEMS.
2. BEGINNING LEAD WIRES SHALL BE CONNECTED TO THE BLACK LEAD AND THE ENDING LEAD WIRES SHALL BE CONNECTED TO THE WHITE LEAD OF THE TWIN TWISTED FEED CABLES AT THE SPLICE POINT.
3. WHERE THE LOOPS ARE INSTALLED PRIOR TO RESURFACING, THE LOOP CORNERS SHALL BE DIAGONALLY CUT.

#### LOOP LEGEND

- ( ) CLOCKWISE ROTATION FOR LOOP WIRES
- S INDICATES SPLICE POINT FOR DETECTOR LOOP LEAD
- INDICATES 2" CORE-DRILL

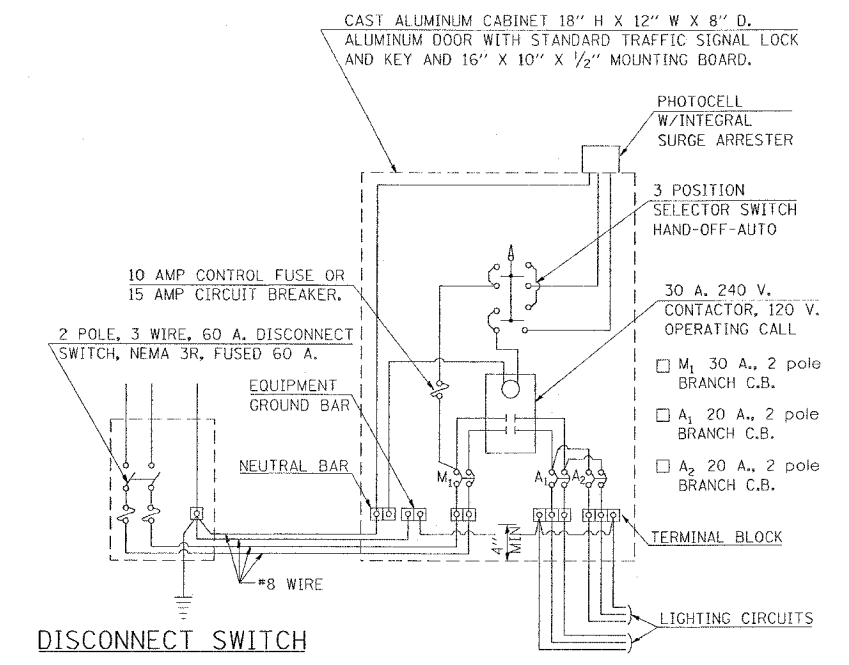


DETAIL 6' x 6' DETECTOR LOOPS

STD. 9-92

REVISIONS
REDRAWN 5-13-02
REVISED 10-26-05
REVISED
REVISED

### CONTROL INSTALLATION SIGNAL CABINET MOUNTED

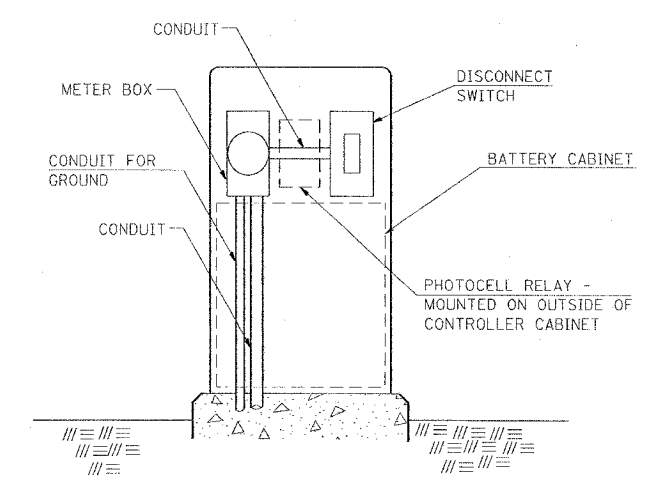


PHOTOCELL RELAY

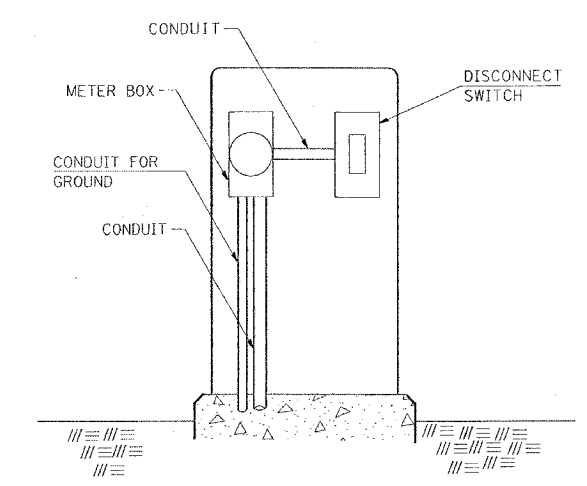
STD. 9-113

REVISIONS
DRAWN 5-13-02
REVISED
REVISED

### SERVICE INSTALLATION DETAILS



SERVICE INSTALLATION (SPECIAL)  
 WITH PHOTOCELL RELAY  
 AND WITH BATTERY CABINET  
 SETTING ON THE EXPANDED  
 TYPE "D" FOUNDATION



SERVICE INSTALLATION (SPECIAL)

NOTE:  
 MATERIAL AND SIZE OF CONDUIT  
 AND CABLE AS REQUIRED BY  
 UTILITY COMPANY

STD. 9-68

REVISIONS
DRAWN 1-31-90
REVISED 2-24-92
REVISED
REVISED

REVISIONS
NAME
DATE

ILLINOIS DEPARTMENT OF TRANSPORTATION

**DETAILS:**  
**DETECTOR LOOPS; CONTROL INSTALLATION  
 SIGNAL CABINET MOUNTED; SERVICE  
 INSTALLATION**

SCALE: VERT. NONE  
 HORIZ. DATE  
 DRAWN BY CNH  
 CHECKED BY JCK

DATE = 10/13/2006  
 FILE NAME = c:\pwworkspace\1020882\old\13\13-3.dgn  
 USER NAME = hudson