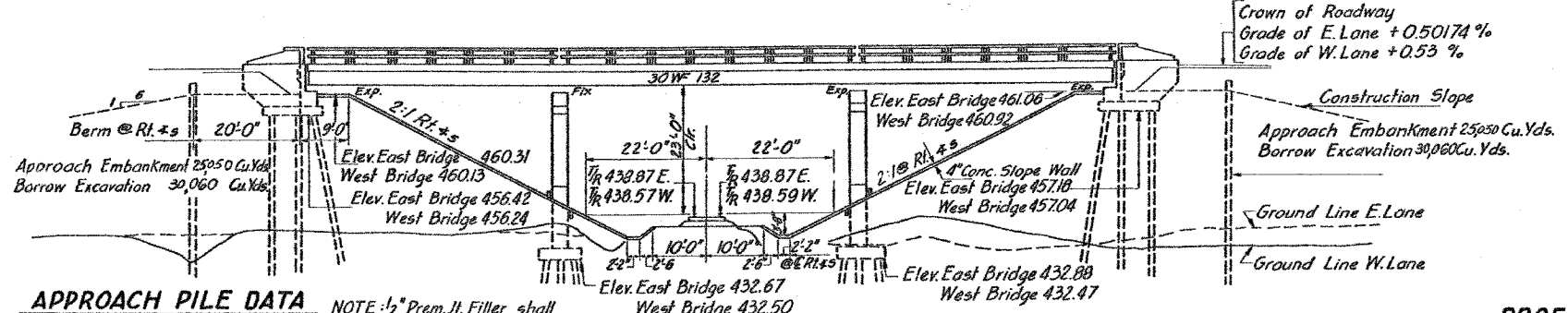


STATE OF ILLINOIS  
DEPARTMENT OF PUBLIC WORKS & BUILDINGS  
DIVISION OF HIGHWAYS

|                     |          |                  |              |           |             |
|---------------------|----------|------------------|--------------|-----------|-------------|
| F.A. RITE.          | SECTION  | COUNTY           | TOTAL SHEETS | SHEET NO. | SHEET NO. 1 |
| *                   | **       | WILLIAMSON       | 9/7          | 832       | 16 SHEETS   |
| STA.                | TO STA.  |                  |              |           |             |
| FED. ROAD DIST. NO. | ILLINOIS | FED. AID PROJECT |              |           |             |
|                     |          |                  |              |           |             |

BM : Bolt Top in R.R. Bridge 4' Rt. Sta. 1516+71 E  
Elev. 438.17  
No Existing Highway Structure Culvert under R.R.  
at  $\bar{C}$  of E. Lane to be filled in by others.



STATION 1516+58.58  
BUILT 19 BY  
STATE OF ILLINOIS  
F.A. PROJ. 16-57-1(32)  
LOADING H 20-S16 & ALT.

GENERAL NOTES

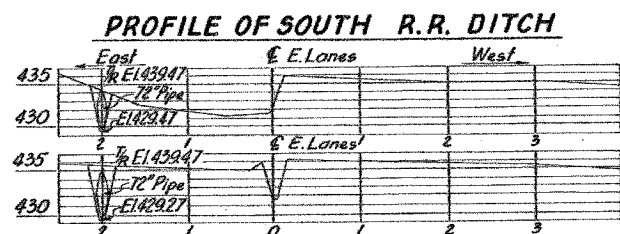
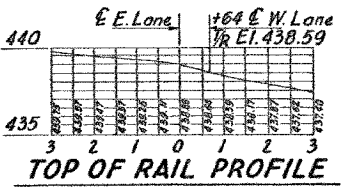
- Class X Concrete shall be used throughout except in handrail end posts.
- Handrail Concrete shall be used in handrail end posts.
- The Concrete floor slab shall be finished in accordance with Article 51.19 of the Standard Specifications.
- Slope wall shall be reinforced with welded wire fabric 6"x6" mesh, #4 wire, weighing 58# per 100 sq. ft.
- Rivets 3/4", Open holes 1 1/8", unless noted.
- Railings shall be adjusted to true alignment after curbs have been poured.
- All rockers, bolsters bearing plates, lead plates, pintles and anchor bolts shall be fabricated and set in accordance with Article 51.15 of the Standard Specifications and are included in quantity of structural steel.
- Anchor bolts shall be set before riveting diaphragms over supports.
- All steel handrail posts shall be vertical.
- Expansion guards shall be fabricated and erected in accordance with Article 51.13 (d) of the Standard Specifications.
- Expansion guards are included in quantity of structural steel. Est. weight 4800 lbs.
- The following surfaces of expansion guards shall be given two shop coats of red lead paint: Outside face of vertical legs and top face of horizontal legs of 4"x4"x 1/2" x 2". Except as otherwise provided, all structural steel shall receive one shop coat of red lead paint and two field coats of aluminum paint. See Articles 56.1 to 56.5 inclusive of the Standard Specifications.
- All paint shall be furnished and applied by the Contractor.
- Holes for concrete piles at all abutments shall be precored in accordance with Article 60.9 (c) of the Standard Specifications.
- The contractor shall drive one timber test pile near pier #1 of the east bridge and one concrete test pile of the south abutment of the west bridge.

NAME PLATE LETTERING  
See Sid. 2113

APPROACH PILE DATA  
Type : Creosoted  
Capacity : 15 tons  
Est. Length : 40'-0"  
No. Required : 32

NOTE : 1/2" Prem. Jt. Filler shall be placed between Slope wall and Abutment caps.

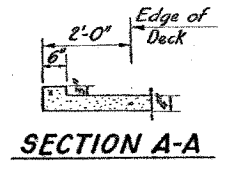
ELEVATION



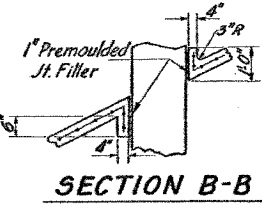
PROFILE OF NORTH R.R. DITCH

DESIGN STRESSES  
fc = 1400 psi Super.  
vc = 75 psi (Figs)  
fs = 20,000 psi Reinf.  
fs = 18,000 psi Struct.  
n = 10

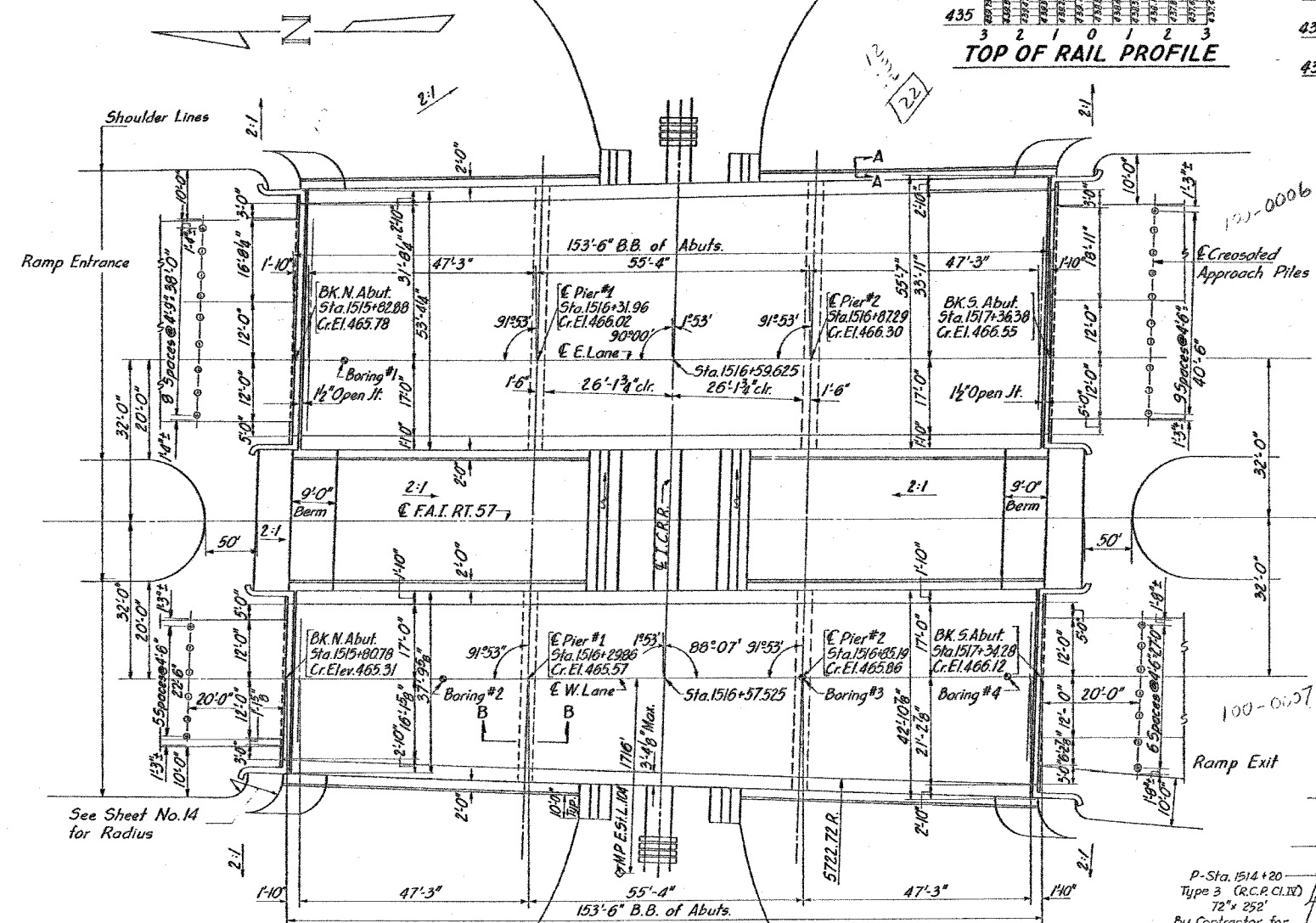
LOADING : H20-S16-44  
And Alternate



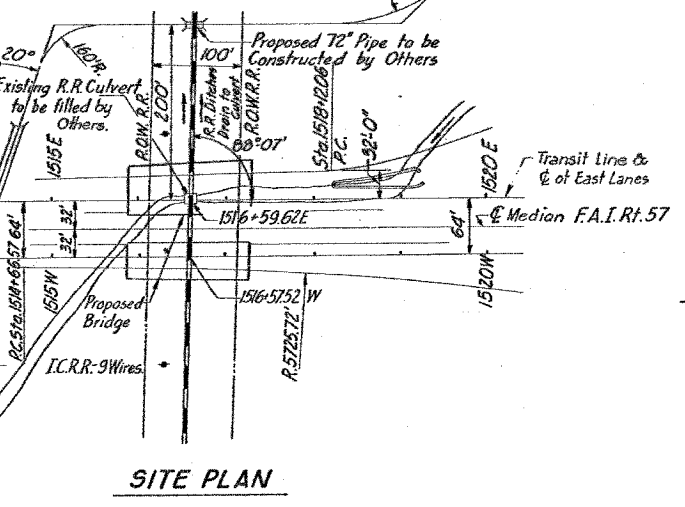
SECTION A-A



SECTION B-B



LOCATION PLAN



TOTAL BILL OF MATERIAL

| ITEM                        | UNIT    | SUPER   | SUB    | TOTAL   |
|-----------------------------|---------|---------|--------|---------|
| Class X Concrete            | Cu.Yds. | 378.2   | 618.0  | 996.2   |
| Handrail Concrete           | Cu.Yds. | 5.0     |        | 5.0     |
| Reinforcement Bars          | Lbs.    | 73,300  | 49,240 | 122,540 |
| Structural Steel            | Lbs.    | 398,960 |        | 398,960 |
| Borrow Excavation           | Cu.Yds. |         | 50,120 | 50,120  |
| Class A Excavation for Str. | Cu.Yds. |         | 240    | 240     |
| Metal Handrail              | Lin.Ft. | 607     |        | 607     |
| Slope wall (4")             | Sq.Yds. | 925     |        | 925     |
| Name Plates                 | Each    | 2       |        | 2       |
| Concrete Piles              | Lin.Ft. |         | 2,257  | 2,257   |
| Test Piles (Concrete)       | Each    |         | 1      | 1       |
| Creosoted Piles             | Lin.Ft. |         | 3,170  | 3,170   |
| Test Piles (Timber)         | Each    |         | 1      | 1       |

FOR INFORMATION ONLY  
GENERAL PLAN  
I.C.R.R. OVERHEAD-WEST OF MARION  
PROJECT 16-57-1(32)52  
F.A.I. RT. 57 - SEC. XI-6VB  
WILLIAMSON COUNTY  
STA. 1516+58.58

DESIGNED William R. Smith  
CHECKED T. Tanaka  
DRAWN Gabor Papp  
CHECKED T. Tanaka  
EXAMINED J. McComine  
PASSED  
APPROVED R. R. Bateman

NOTE : All transverse deck dimensions taken at backs of abuts. on plan view @ rt. +s to  $\bar{C}$  Rdwy.

Revised - 1/14/60 - WJM - At north Abut. (in ELEVATION) changed Embankment from 4250 to 2085 Cu.Yds. & Borrow Exc. from 4980 to 2950 Cu.Yds. at south Abut. changed Embankment from 1870 to 2080 Cu.Yds. & Borrow Exc. from 2100 to 2960 Cu.Yds. In APPROACH PILE DATA, changed estimated length from 20 to 40 Lin. Ft. In TOTAL BILL OF MATERIAL, changed quantity of Borrow Exc. from 41780 to 50120 Cu.Yds. & the quantity of Creosoted Piles from 2550 to 3170 Lin. Ft.  
Revised - 1/12/60 R.D. Changed quantities of Class X Conc. on Bill of Material.  
Quantity of Borrow Excavation Revised - 2/17/60 R.S.B.