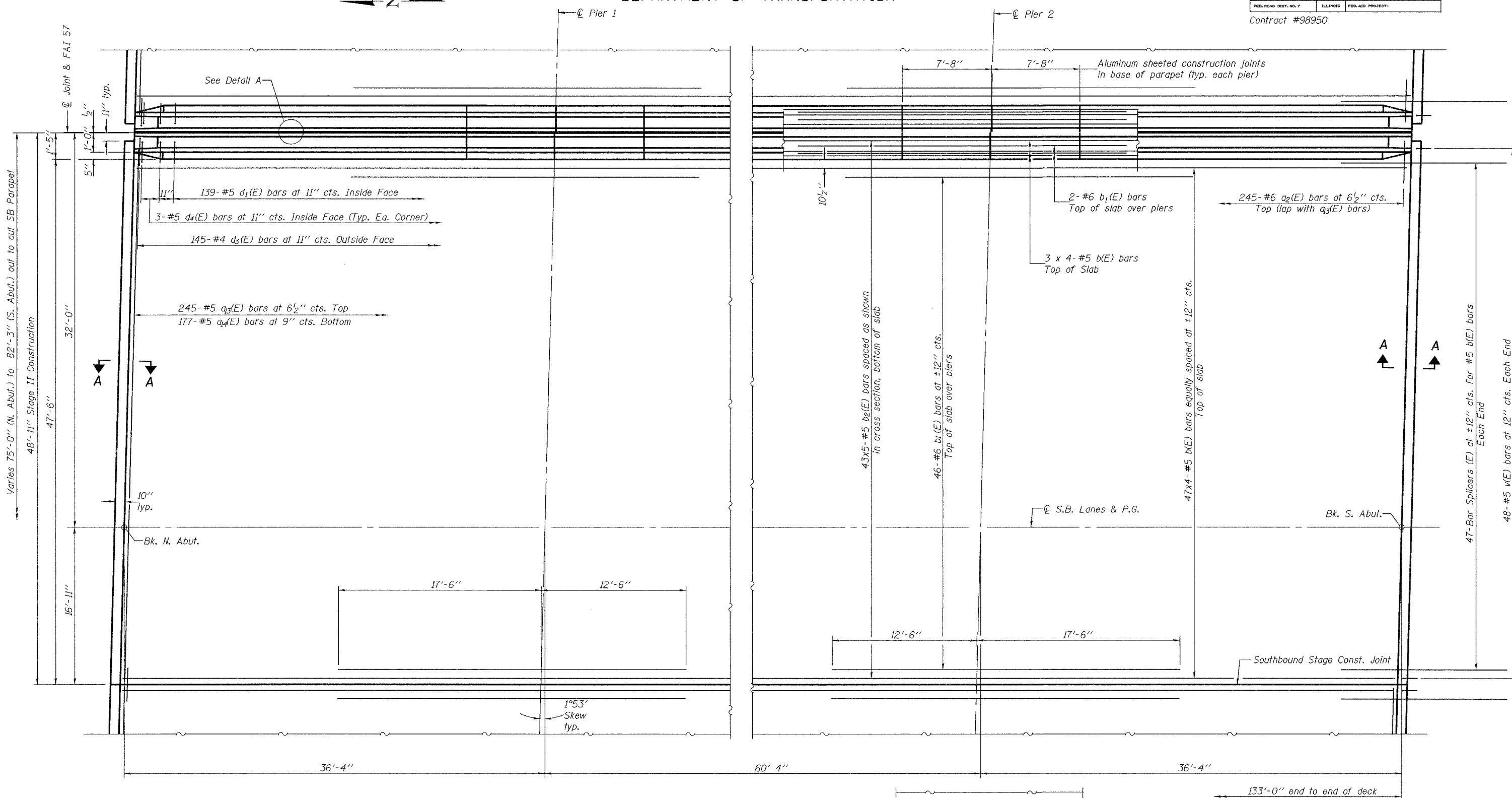


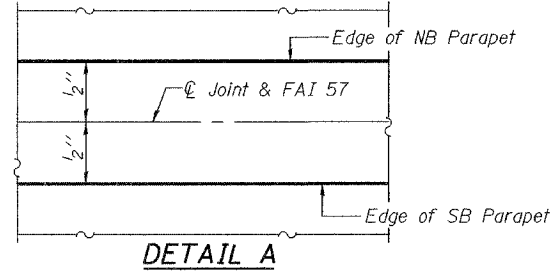
STATE OF ILLINOIS  
DEPARTMENT OF TRANSPORTATION

ROUTE NO.	SECTION	COUNTY	DATE	SHEET NO.	SHEET NO. 15
F.A.I. 57	(X1-6-2) VB-2	WILLIAMSON	917	843	51 SHEETS
FED. ROAD DIST. NO. 7		ILLINOIS	FED. AID PROJECT		

Contract #98950



PLAN



DETAIL A

MIN. BAR LAPS  
#5 bars = 1'-8"

Notes:  
See sheet 17, 19, and 24 of 51 for superstructure details and Bill of Material.  
Bars indicated thus 47 x 4-#5 etc. indicates 47 lines of bars with 4 lengths per line.  
See sheet 18 of 51 for parapet reinforcement.  
See sheet 24 of 51 for Section A-A.  
See sheet 48 of 51 for Bar Splicers Details.

DESIGNED	Michael D. Cima
CHECKED	Fess Teklehaimanot
DRAWN	BECKY M. LEACH
CHECKED	M.D.C. & F.T.

EXAMINED *Thomas J. Demagala*  
ENGINEER OF BRIDGE DESIGN  
PASSED *Ralph E. Anderson*  
ENGINEER OF BRIDGES AND STRUCTURES

January 22, 2007

**SUPERSTRUCTURE (STAGE II-SB)**  
**F.A.I. RT. 57 SEC. (X1-6-2)VB-2**  
**WILLIAMSON COUNTY**  
**STA. 1516+58.56**  
**S.N. 100-0086 (N.B.)**  
**S.N. 100-0087 (S.B.)**