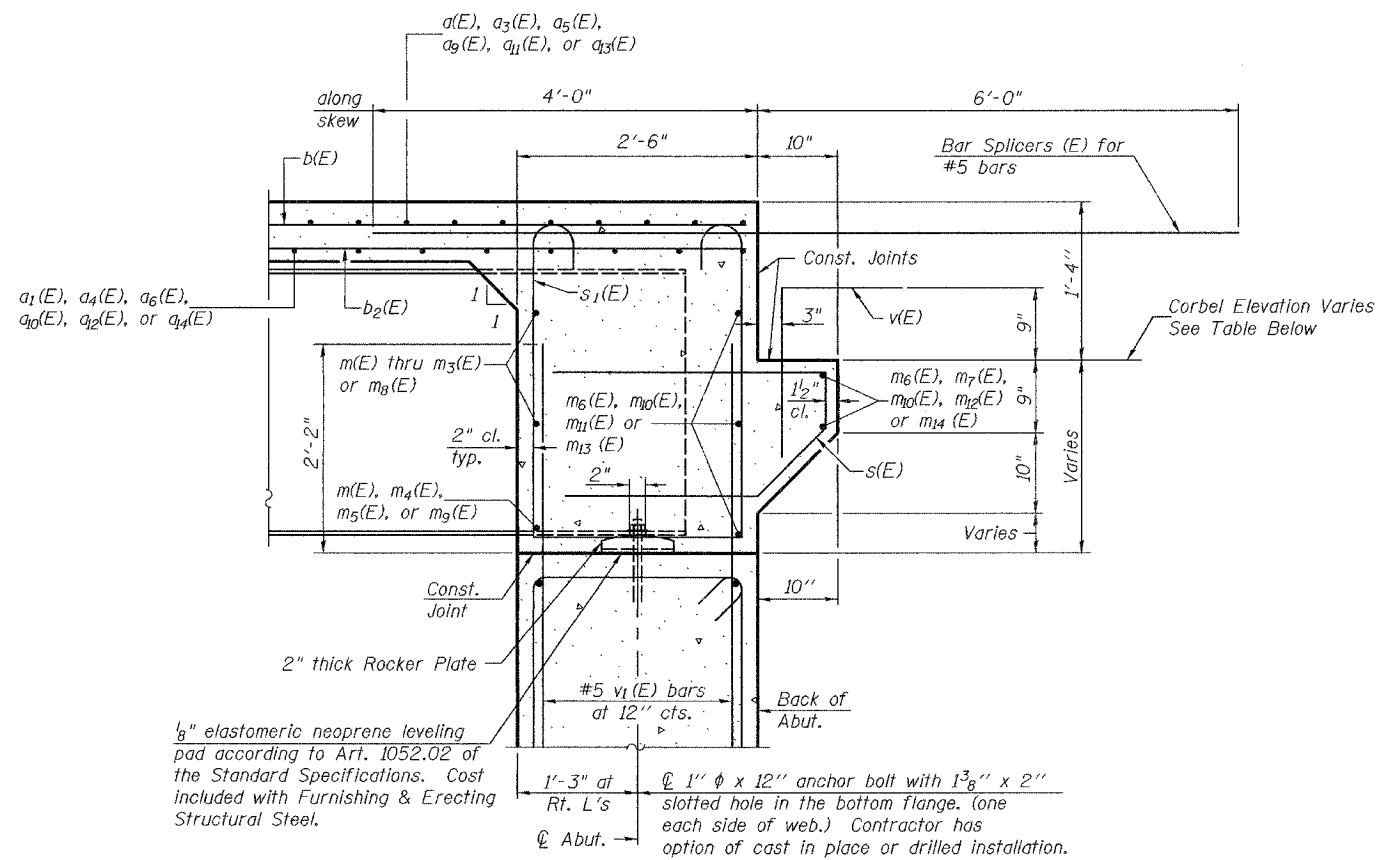


STATE OF ILLINOIS
DEPARTMENT OF TRANSPORTATION

ROUTE NO.	SECTION	COUNTY	SHEET NO.	SHEET	SHEET NO. 24
F.A.I. 57	(X1-6-2) VB-2	WILLIAMSON	917	857	51 SHEETS
FED. ROAD DIST. NO. 7		ILLINOIS		FED. AID PROJECT	

Contract #98950



SECTION A-A

Dimensions at right angles to abutment, except as shown.

TOP OF CORBEL ELEVATION AT BACK OF ABUTMENTS		
Location	N.B. Structure	S.B. Structure
Bk. North Abutment	-	-
East Edge of Parapet	463.83	464.96
☉ Roadway & P.G.	465.54	465.53
West Edge of Parapet	464.96	464.72
Bk. South Abutment	-	-
East Edge of Parapet	464.63	465.67
☉ Roadway & P.G.	466.26	466.25
West Edge of Parapet	465.68	465.28

DESIGNED	Michael D. Cima
CHECKED	Fess Teklehaimanot
DRAWN	BECKY M. LEACH
CHECKED	M.D.C. & F.T.

EXAMINED	Thomas J. Domagalaki ENGINEER OF BRIDGE DESIGN	January 22, 2007
PASSED	Ralph E. Anderson ENGINEER OF BRIDGES AND STRUCTURES	

DIAPHRAGM DETAILS
F.A.I. RT. 57 SEC. (X1-6-2)VB-2
WILLIAMSON COUNTY
STA. 1516+58.56
S.N. 100-0086 (N.B.)
S.N. 100-0087 (S.B.)