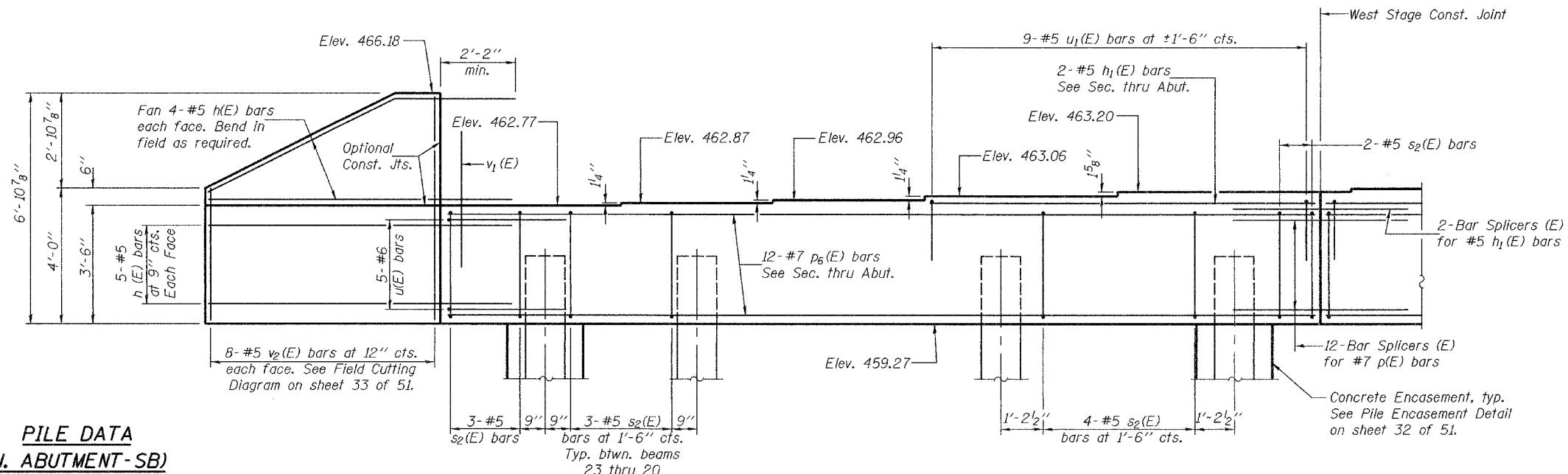


STATE OF ILLINOIS
DEPARTMENT OF TRANSPORTATION

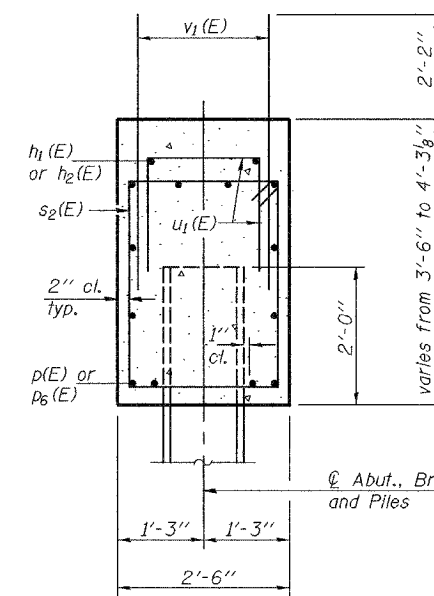
ROUTE NO.	SECTION	COUNTY	POST MILE	SHEET	SHEET NO. 31
F.A.I. 57	XI-6-2)VB-2	WILLIAMSON	917	SLA	51 SHEETS
FED. ROAD DIST. NO. 7	ILLINOIS	FED. AID PROJECT-			

Contract #98950

Notes: Four steps monolithically with cap.
Space reinforcement in cap to miss anchor bolts.
For Anchor Bolt installation details see sheet 30 of 51.
For Bar Splicer details see sheet 48 of 51.
For bar bending details and Field Cutting Diagram see sheet 33 of 51.



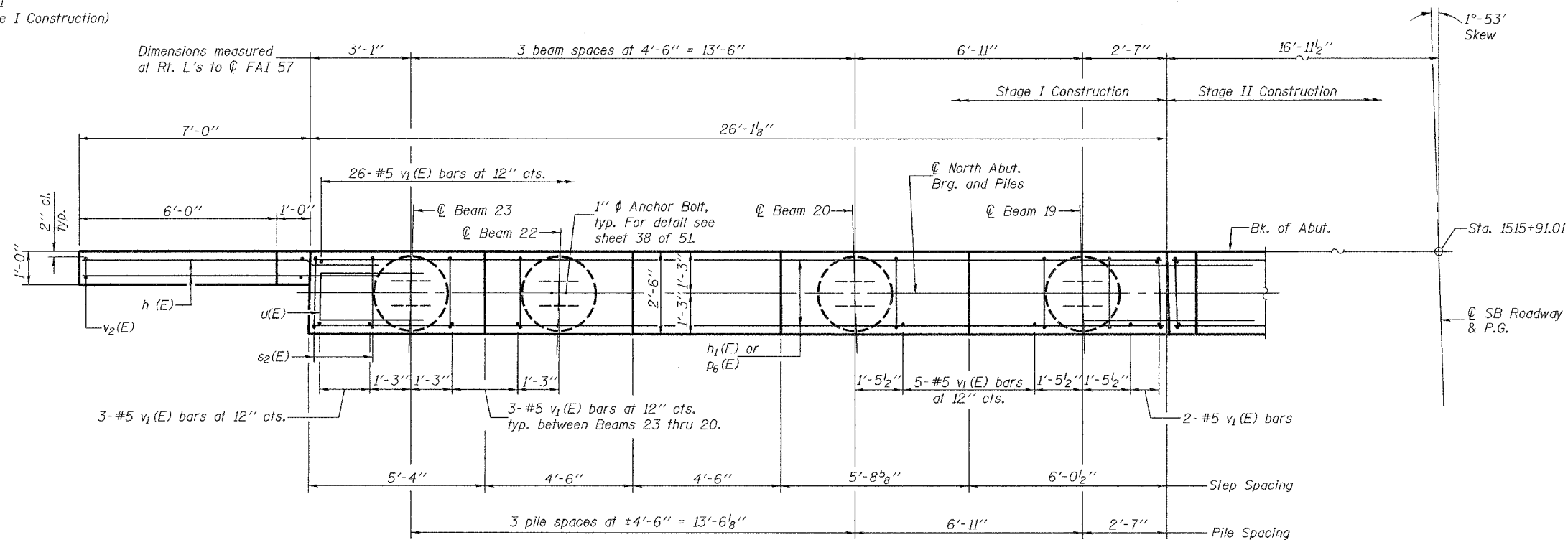
ELEVATION
(Looking North)



**SECTION THRU
NORTH ABUTMENT (SB)**

**PILE DATA
(N. ABUTMENT-SB)**

Type: HP14x73
Nominal Required Bearing: 578 kips
Factored Resistance Available: 289 kips
Est. Length: 60 feet
No. of Production Piles: 11
No. of Test Piles: 1 (Stage I Construction)



PLAN

BILL OF MATERIAL

NORTH ABUTMENT-SN 100-0087 (S.B)

Bar	No.	Size	Length	Shape
h(E)	18	#5	9'-5"	—
h1(E)	2	#5	11'-5"	—
h2(E)	2	#5	35'-2"	—
p(E)	24	#7	26'-10"	—
p6(E)	12	#7	25'-9"	—
s2(E)	47	#5	11'-5"	□
u(E)	10	#6	7'-2"	□
u1(E)	33	#5	6'-10"	□
v1(E)	130	#5	4'-4"	—
v2(E)	8	#5	10'-2"	—
Concrete Structures		Cu. Yd.	28.7	
Reinforcement Bars, Epoxy Coated		Pound	3800	
Structure Excavation		Cu. Yd.	169	
Furnishing Steel Piles HP14x73		Foot	660	
Driving Piles		Foot	660	
Test Pile Steel HP14x73		Each	1	
Concrete Encasement		Cu. Yd.	5.3	

**NORTH ABUTMENT (STAGE I - SB)
F.A.I. RT. 57 SEC. (XI-6-2)VB-2**

WILLIAMSON COUNTY
STA. 1516+58.56
S.N. 100-0086 (N.B.)
S.N. 100-0087 (S.B.)

DESIGNED	Michael D. Cima
CHECKED	Fess Teklehaimanot
DRAWN	BECKY M. LEACH
CHECKED	M.D.C. & F.T.

January 22, 2007
EXAMINED *Thomas J. Damagala*
PASSED *Ralph E. Anderson*
ENGINEER OF BRIDGE DESIGN
ENGINEER OF BRIDGES AND STRUCTURES