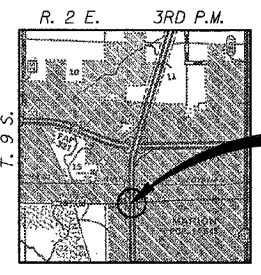


GFL013.DWG SEPT. 15, 2005

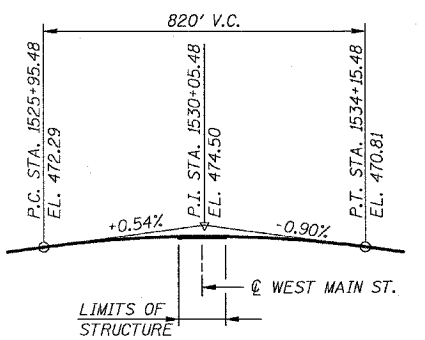
BENCHMARK: PAINTED MARK ON MOST NORTHEAST CORNER OF EXISTING BRIDGE DECK, S.N. 100-0004 (N.B.) STA. 1529+18.38, 56.12' LT. @ F.A.I. 57 EL. 471.53

EXISTING STRUCTURE:
S.N. 100-0004 (N.B.) AND S.N. 100-0005 (S.B.) THE EXISTING STRUCTURES WERE BUILT IN 1960 UNDER F.A.I. ROUTE 57 SECTION XI-6HB-2. BOTH STRUCTURES CONSIST OF THREE CONTINUOUS SPANS (40'-7", 69'-2", 40'-7") FOR A TOTAL LENGTH OF 154'-0" MEASURED BACK TO BACK OF ABUTMENTS. THE SUPERSTRUCTURES CONSIST OF A 7" REINFORCED CONCRETE DECK ON WIDE FLANGE BEAMS. THE WIDE FLANGE BEAMS ARE COMPOSITE IN THE CENTER SPAN AND HINGED IN THE END SPANS. THE SUPERSTRUCTURES ARE SUPPORTED BY HAMMERHEAD TYPE PIERS ON PILE SUPPORTED FOOTINGS AND PILE BENT ABUTMENTS. THE OUT TO OUT DECK WIDTH OF THE NORTHBOUND STRUCTURE VARIES FROM 41'-11 1/8" TO 36'-9 5/8". THE OUT TO OUT DECK WIDTH OF THE SOUTHBOUND STRUCTURE VARIES FROM 53'-1 1/4" TO 51'-5 1/2". THE EXISTING STRUCTURES SHALL BE REMOVED IN STAGES AND DISPOSED OF ACCORDING TO SECTION 501 OF THE STANDARD SPECIFICATIONS. THE ROADWAY SHALL REMAIN OPEN TO TRAFFIC, USING STAGE CONSTRUCTION, DURING THE CONSTRUCTION PERIOD.

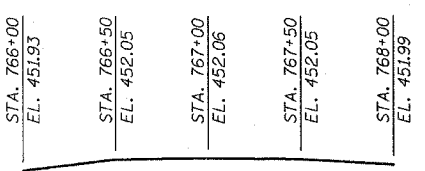
SALVAGE: SEE SPECIAL PROVISIONS FOR SALVAGE.



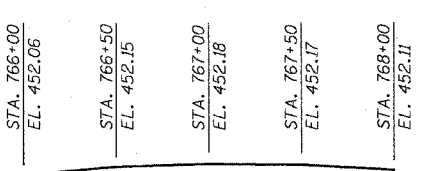
LOCATION SKETCH



PROFILE GRADE - F.A.I. RT. 57 NORTHBOUND & SOUTHBOUND LANES



PROFILE GRADE - EASTBOUND WEST MAIN STREET (MEDIAN EDGE OF LANE)

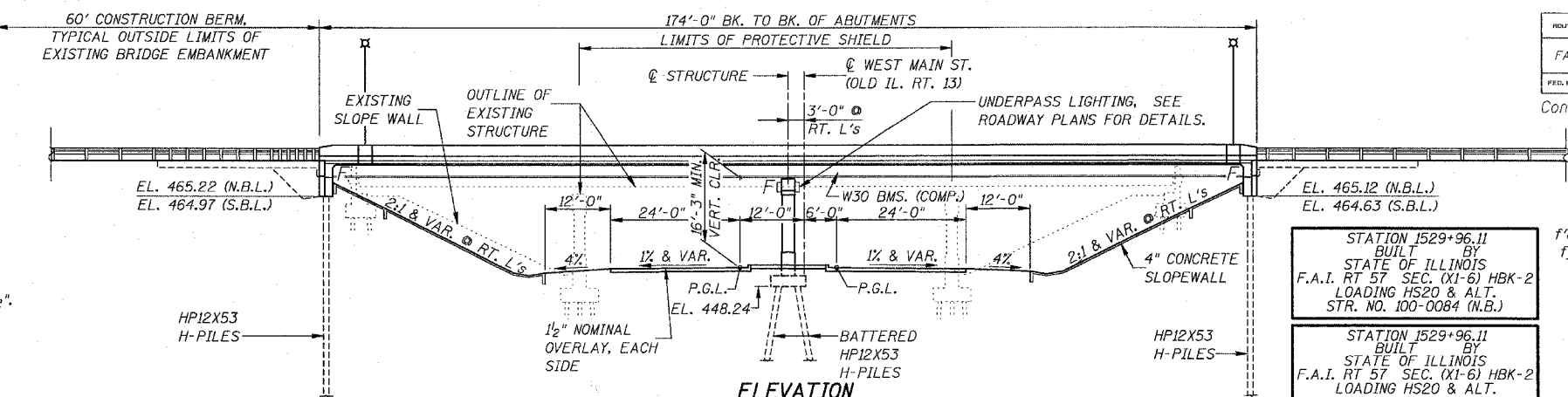


PROFILE GRADE - WESTBOUND WEST MAIN STREET (MEDIAN EDGE OF LANE)

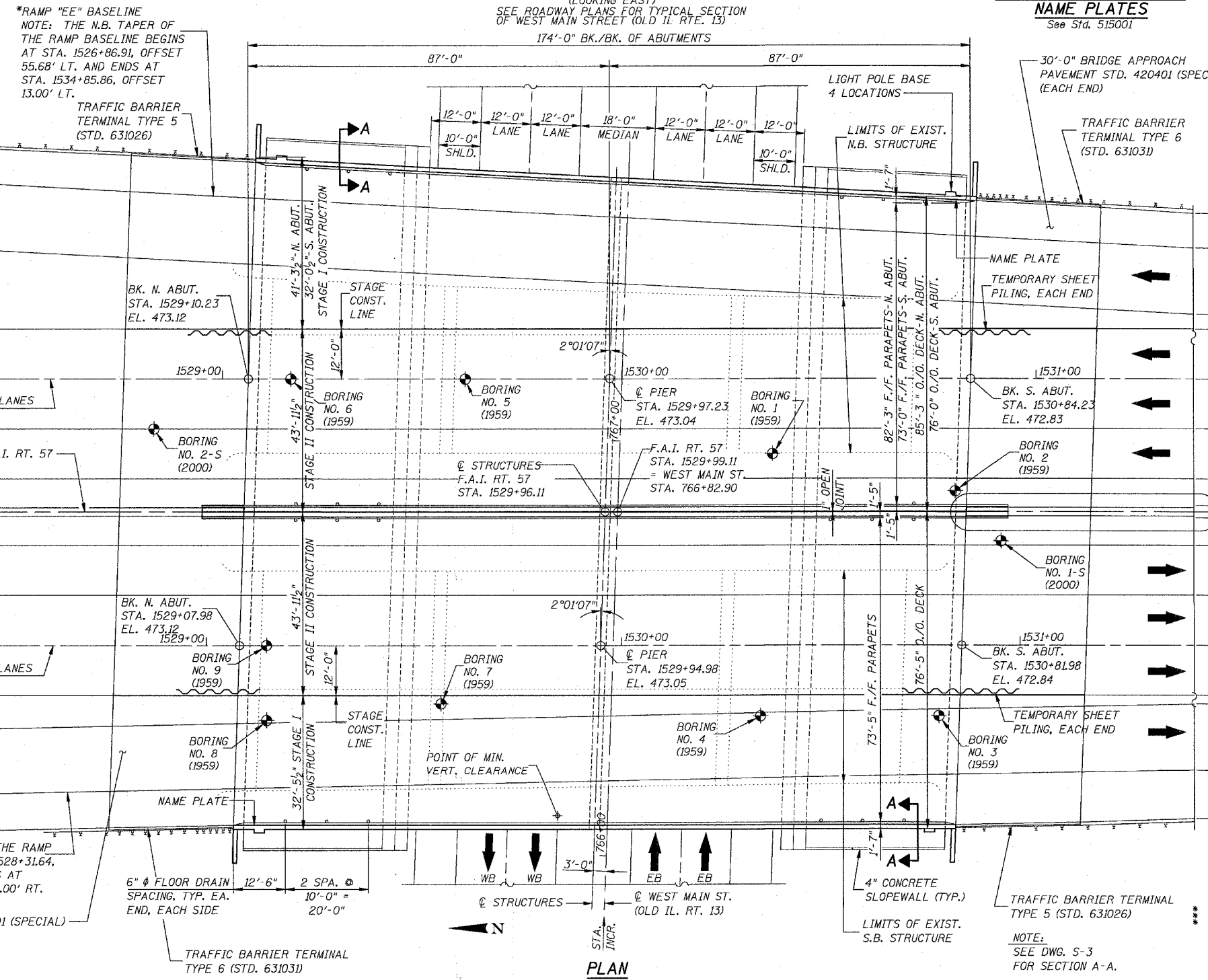
BASELINE STATIONS ARE BASED ON GEOMETRICS ESTABLISHED IN OCTOBER 2002 AND ADJUSTED TO CLOSELY MATCH EXISTING PLANS

****RAMP "FF" BASELINE**
NOTE: THE S.B. TAPER OF THE RAMP BASELINE BEGINS AT STA. 1528+31.64, OFFSET 36.30' RT. AND ENDS AT STA. 1534+46.52, OFFSET 24.00' RT.

30'-0" BRIDGE APPROACH PAVEMENT STD. 420401 (SPECIAL)



ELEVATION (LOOKING EAST)
SEE ROADWAY PLANS FOR TYPICAL SECTION OF WEST MAIN STREET (OLD IL. RTE. 13)



PLAN

ROUTE NO.	SECTION	COUNTY	TOTAL SHEETS	SHEET NO.
FAI 57	(X1-6) HBK-2	WILLIAMSON	917	835
FED. ROAD DIST. NO. 7		ILLINOIS	FED. AID PROJECT	

Contract #98950

DESIGN SPECIFICATIONS

2002 AASHTO STANDARD SPECIFICATIONS FOR HIGHWAY BRIDGES, 17TH EDITION

DESIGN STRESSES

FIELD UNITS **STRUCTURAL STEEL**

$f'_c = 3,500 \text{ psi}$ $f_y = 50,000 \text{ psi}$ (M270, GRADE 50)
 $f_y = 60,000 \text{ psi}$ (REINF.) $f_y = 36,000 \text{ psi}$ (M270, GRADE 36)

LOADING HS20-44 & ALT. MILITARY LOADING

ALLOW 50 psf FOR FUTURE WEARING SURFACE.

SEISMIC DATA

SEISMIC PERFORMANCE CATEGORY (SPC): B
BEDROCK ACCELERATION COEFFICIENT (A): 12.2%
SITE COEFFICIENT (S) = 1.5 (TYPE III)



Structural Engineer
Clark Dietz, Inc.
DATE: 1/22/07
Expires 11-30-2008

"I CERTIFY THAT TO THE BEST OF MY KNOWLEDGE, INFORMATION AND BELIEF, THIS BRIDGE DESIGN IS STRUCTURALLY ADEQUATE FOR THE DESIGN LOADING SHOWN ON THE PLANS. THE DESIGN IS AN ECONOMICAL ONE FOR THE STYLE OF STRUCTURE AND COMPLIES WITH REQUIREMENTS OF THE CURRENT 'AASHTO STANDARD SPECIFICATIONS FOR HIGHWAY BRIDGES'."

****RAMP GORE VARIES:**
15'-8 1/2" (N. ABUT.)
TO 6'-5 1/2" (S. ABUT.)

***** SHOULDER AND RAMP DIMENSIONS** MEASURED PERPENDICULAR TO RAMP BASELINE. ADJUST RAMP GORE DIMENSIONS ACCORDINGLY.

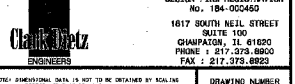
APPROVED
FOR STRUCTURAL ADEQUACY ONLY

Robert E. Anderson
Engineer of Bridges and Structures
MEDIAN CONCRETE BARRIER & MEDIAN DRAINAGE SYSTEM PER RDWY. PLANS (EACH END)

****RAMP GORE VARIES:**
6'-10 1/2" (N. ABUT.)
TO 3'-4 3/4" (S. ABUT.)

GENERAL PLAN & ELEVATION

INTERSTATE 57 OVER
WEST MAIN ST. (OLD IL. RT. 13)
F.A.I. RT. 57 SEC. (X1-6)HBK-2
WILLIAMSON COUNTY
STATION 1529+96.11
STRUCTURE NO. 100-0084 (N.B.)
STRUCTURE NO. 100-0085 (S.B.)



DESIGNED BY	CHKD BY	DATE
DRWN BY	REV	DATE
CHECKED BY	SLD	05/2005
APPROVED BY	SMN	
ACTIVITY	DETAILS	