

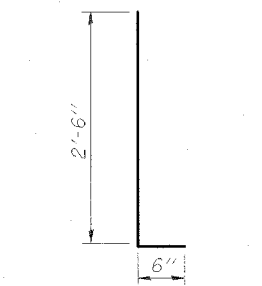
NORTHBOUND BILL OF MATERIAL

Bar	No.	Size	Length	Shape
a1(E)	318	#5	17'-6"	—
a2(E)	80	#5	25'-6"	—
a3(E)	79	#5	23'-2"	—
a4(E)	79	#5	20'-10"	—
a5(E)	79	#5	18'-6"	—
a6(E)	1	#5	49'-7"	—
a7(E)	1	#5	31'-7"	—
a8(E)	1	#5	30'-3"	—
a9(E)	1	#5	16'-3"	—
a10(E)	230	#5	22'-4"	—
a11(E)	58	#5	20'-0"	—
a12(E)	57	#5	17'-8"	—
a13(E)	57	#5	15'-5"	—
a14(E)	58	#5	13'-1"	—
a15(E)	318	#6	4'-6"	—
a16(E)	2	#5	40'-10"	—
a17(E)	2	#5	31'-6"	—
a18(E)	324	#5	43'-7"	—
a19(E)	232	#5	42'-11"	—
b(E)	534	#5	30'-9"	—
b1(E)	86	#6	49'-0"	—
b2(E)	504	#5	26'-8"	—
d(E)	190	#5	3'-0"	L
d1(E)	374	#5	2'-5"	L
d2(E)	190	#4	3'-0"	L
d3(E)	380	#4	3'-9"	L
d4(E)	6	#5	2'-2"	L
d5(E)	6	#6	4'-5"	L
d6(E)	10	#6	8'-11"	L
d7(E)	190	#5	3'-8"	L
d8(E)	190	#4	3'-8"	L
e(E)	112	#4	18'-1"	—
e1(E)	24	#4	13'-0"	—
e2(E)	24	#8	27'-0"	—
e3(E)	8	#8	13'-0"	—
e4(E)	24	#5	25'-8"	—
e5(E)	8	#5	13'-0"	—
m(E)	2	#6	40'-3"	—
m1(E)	10	#6	43'-7"	—
m2(E)	3	#6	41'-0"	—
m3(E)	12	#6	7'-8"	—
m4(E)	36	#6	9'-7"	—
m5(E)	4	#6	2'-11"	—
m6(E)	16	#6	6'-10"	—
m7(E)	2	#6	2'-0"	—
m8(E)	5	#6	4'-8"	—
m9(E)	2	#6	31'-0"	—
m10(E)	3	#6	31'-9"	—
s(E)	160	#5	5'-7"	—
s1(E)	138	#4	8'-11"	—
v(E)	66	#5	3'-10"	—
v5(E)	94	#5	4'-5"	—
Reinforcement Bars, Epoxy Coated	Pound	92,500		
Concrete Superstructure	Cu. Yds.	414.4		
Bar Splicers	Each	722		
Reinforcement Bars, Epoxy Coated	Pound	100,520		
Concrete Superstructure	Cu. Yds.	435.0		
Bar Splicers	Each	740		

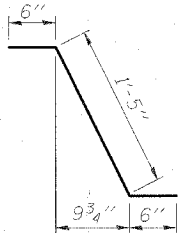
Bars indicated thus 1 x 3 #5 etc. indicates 1 line of bars with 3 lengths per line.

SOUTHBOUND BILL OF MATERIAL

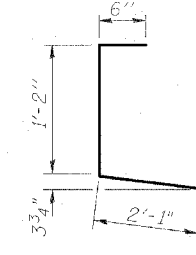
Bar	No.	Size	Length	Shape
a14(E)	318	#6	4'-6"	—
a20(E)	324	#5	43'-7"	—
a21(E)	232	#5	42'-11"	—
a30(E)	324	#5	32'-1"	—
a31(E)	232	#5	31'-5"	—
b(E)	480	#5	30'-9"	—
b1(E)	77	#6	49'-0"	—
b2(E)	462	#5	26'-8"	—
d(E)	380	#5	3'-0"	L
d1(E)	374	#5	2'-5"	L
d2(E)	380	#4	3'-0"	L
d3(E)	380	#4	3'-9"	L
d4(E)	6	#5	2'-2"	L
d5(E)	6	#6	4'-5"	L
d6(E)	10	#6	8'-11"	L
d7(E)	190	#5	3'-8"	L
d8(E)	190	#4	3'-8"	L
e(E)	112	#4	18'-1"	—
e1(E)	24	#4	13'-0"	—
e2(E)	24	#8	27'-0"	—
e3(E)	8	#8	13'-0"	—
e4(E)	24	#5	25'-8"	—
e5(E)	8	#5	13'-0"	—
m1(E)	10	#6	43'-7"	—
m4(E)	40	#6	9'-7"	—
m5(E)	4	#6	2'-11"	—
m11(E)	2	#6	5'-6"	—
m12(E)	4	#6	31'-5"	—
m13(E)	6	#6	32'-2"	—
m14(E)	18	#6	6'-9"	—
m15(E)	2	#6	1'-0"	—
s(E)	154	#5	5'-7"	—
s1(E)	132	#4	8'-11"	—
v(E)	30	#5	3'-10"	—
v5(E)	56	#5	4'-5"	—
v6(E)	66	#5	4'-9"	—
Reinforcement Bars, Epoxy Coated	Pound	92,500		
Concrete Superstructure	Cu. Yds.	414.4		
Bar Splicers	Each	722		



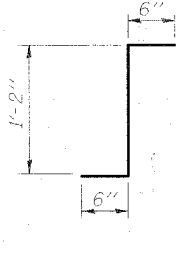
BARS d(E) & d2(E)



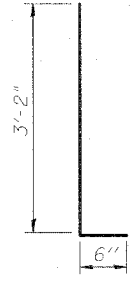
BAR d1(E)



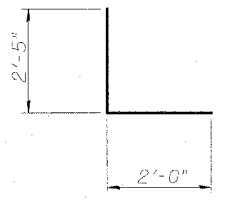
BAR d3(E)



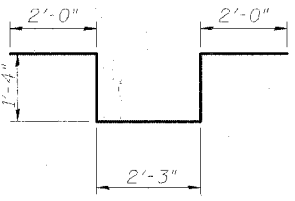
BAR d4(E)



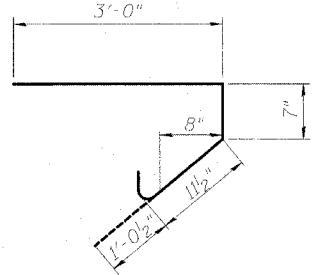
BARS d7(E) & d8(E)



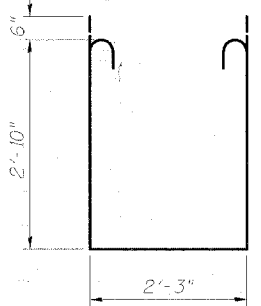
BAR d5(E)



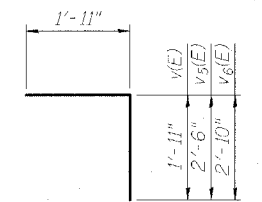
BAR d6(E)



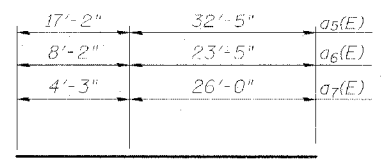
BAR s(E)



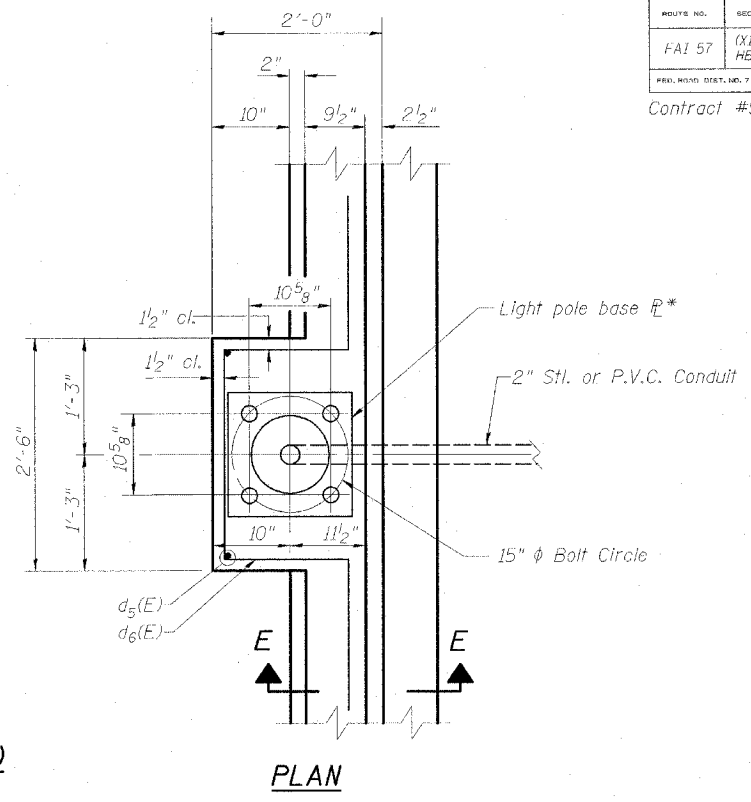
BAR s1(E)



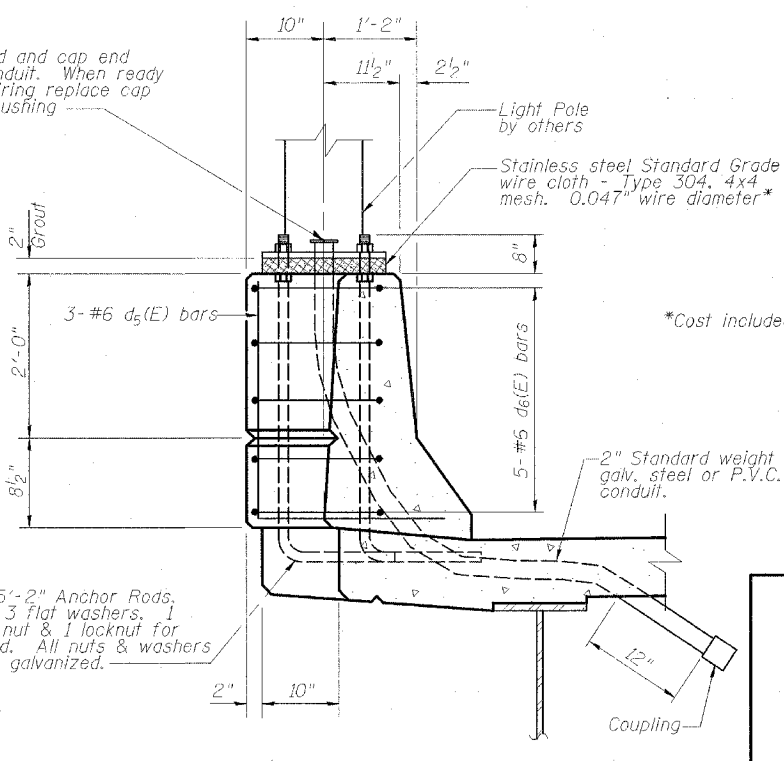
BAR v(E), v5(E) or v6(E)



BAR CUTTING DIAGRAM



PLAN



SECTION E-E

Note: Cost of anchor bolts and conduit included with Concrete Superstructure.

SUPERSTRUCTURE BILL OF MATERIAL & LIGHT POLE BASE

INTERSTATE 57 OVER
WEST MAIN ST. (OLD IL RT. 13)
F.A.I. RT. 57 SEC. (X1-6)HBK-2
WILLIAMSON COUNTY
STATION 1529+96.11
STRUCTURE NO. 100-0084 (N.B.)
STRUCTURE NO. 100-0085 (S.B.)

DESIGN FIRM REGISTRATION
No. 184-000450

Clark Dietz
ENGINEERS

1817 SOUTH NEIL STREET
SUITE 100
CHAMPAIGN, IL 61820
PHONE : 217.373.8900
FAX : 217.373.8923

NOTES: DIMENSIONAL DATA IS NOT TO BE OBTAINED BY SCALING ANY PORTION OF THIS DRAWING.

DRAWING NUMBER

DESIGNED BY: SMM PROJECT NO: 102314
DRAWN BY: MEW DATE: 05/28/86
CHECKED BY: SLD
APPROVED BY: SMM
ACTIVITY INITIALS

S-15