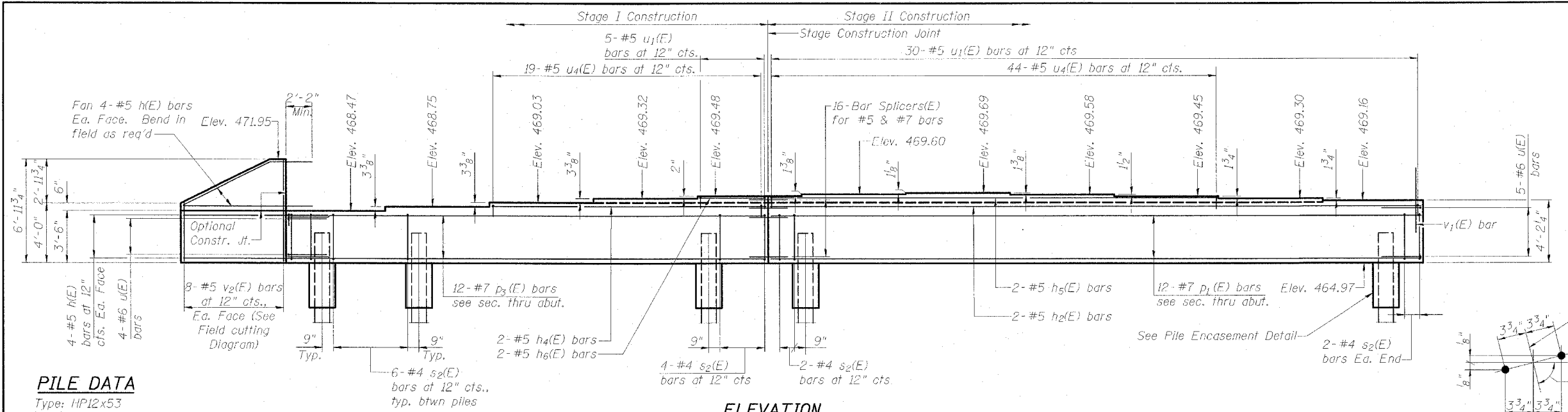


NOTES

- Pour steps monolithically with cap.
- The Steel H-Piles shall be according to AASHTO M270 Grade 50.
- The test pile shall be driven to 110 percent of the Nominal Required Bearing indicated in the pile data information.

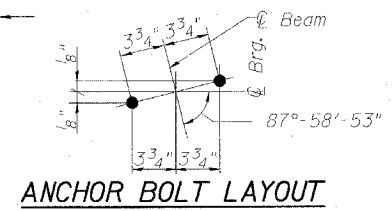
**SOUTHBOUND
NORTH ABUTMENT
BILL OF MATERIAL**

Bar	No.	Size	Length	Shape
h(E)	16	#5	9'-8"	
h ₂ (E)	2	#5	43'-7"	
h ₄ (E)	2	#5	18'-5"	
h ₅ (E)	2	#5	29'-11"	
h ₆ (E)	2	#5	4'-5"	
p ₁ (E)	12	#7	43'-7"	
p ₃ (E)	12	#7	32'-1"	
s ₂ (E)	70	#4	11'-5"	□
u(E)	9	#6	7'-2"	□
u ₁ (E)	35	#5	3'-0"	□
u ₄ (E)	63	#5	3'-8"	□
v ₁ (E)	143	#5	4'-4"	
v ₂ (E)	8	#5	10'-4"	
Concrete Structures				Cu. Yds. 31.8
Reinforcement Bars, Epoxy Coated				Pound 3,930
Structure Excavation				Cu. Yds. 159
Furnishing Steel Piles, HP12x53				Foot 429
Driving Piles				Foot 429
Test Pile Steel HP12x53				Each 1
Bar Splicers				Each 16
Concrete Encasement				Cu. Yds. 4.2

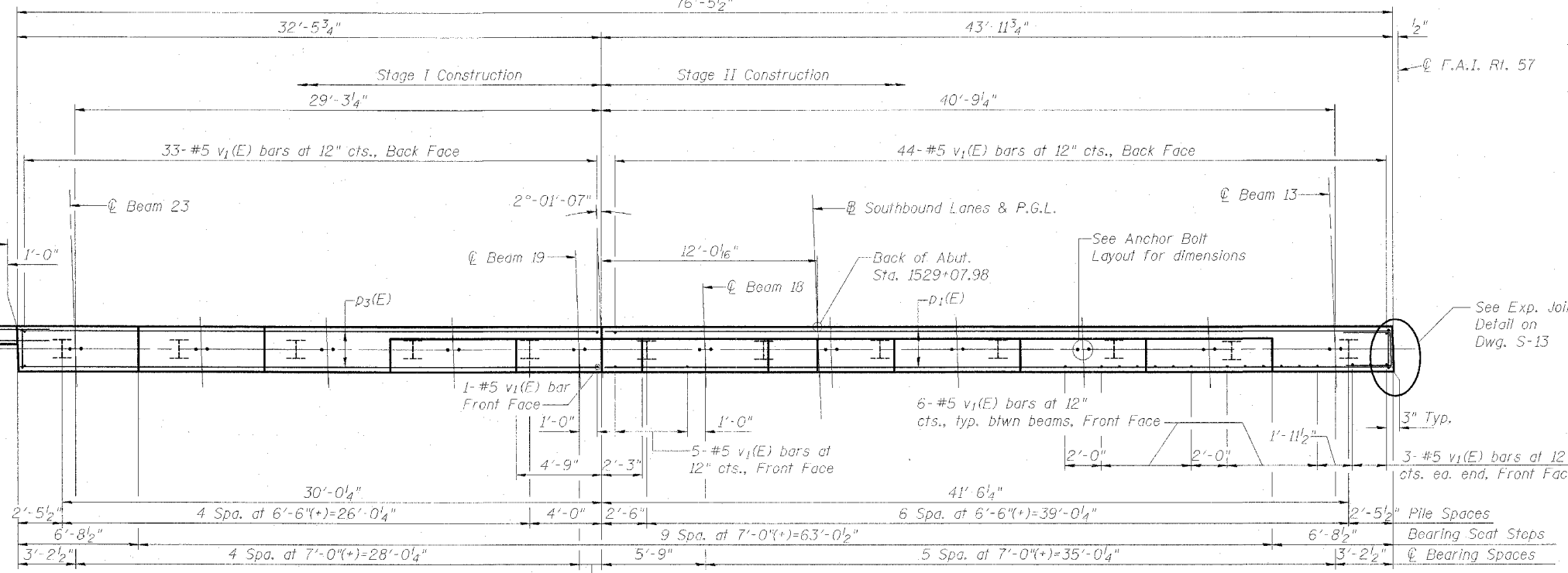


PILE DATA
 Type: HP12x53
 Nominal Req'd Bearing: 420k
 Allowable Resistance Available: 140k
 Est. Length: 39'
 No. Req'd: 11 + 1 Test Pile

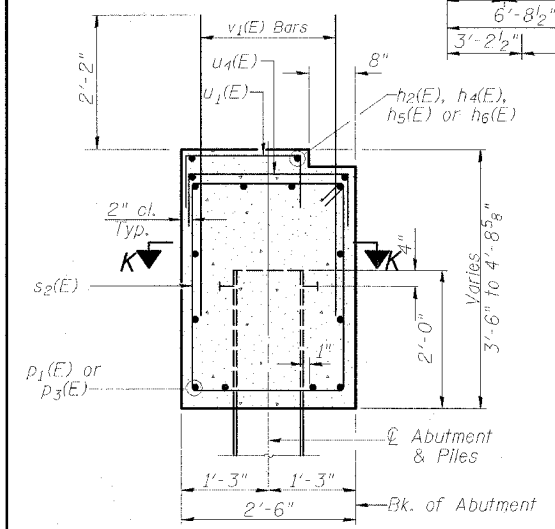
ELEVATION
(Looking North)
76'-5 1/2"



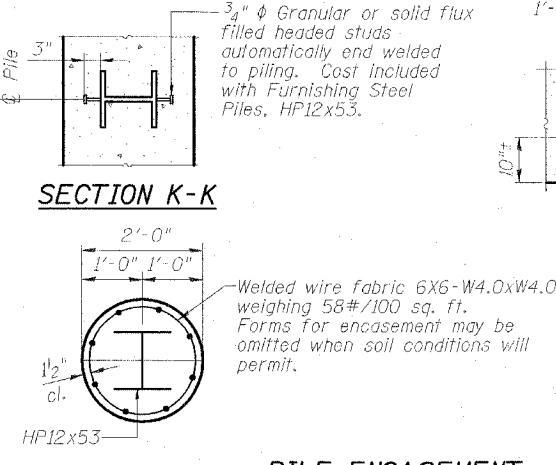
ANCHOR BOLT LAYOUT



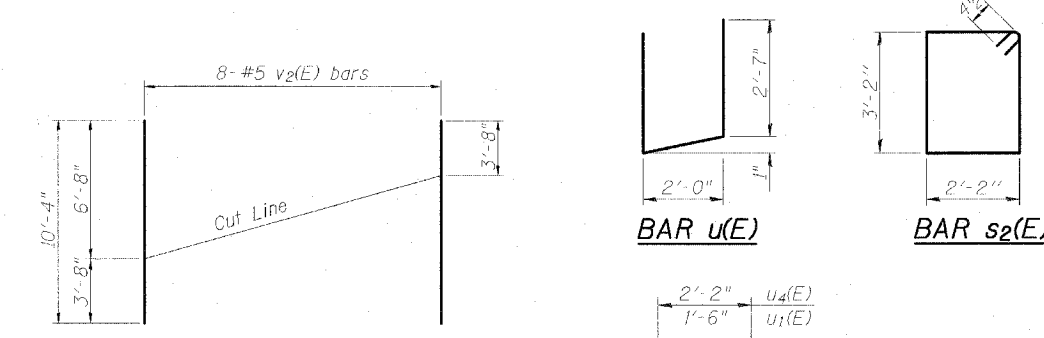
PLAN



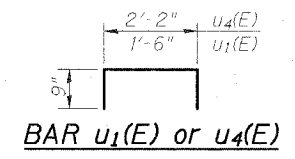
SECTION THRU ABUTMENT



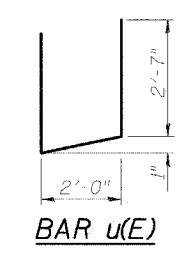
PILE ENCASEMENT DETAIL



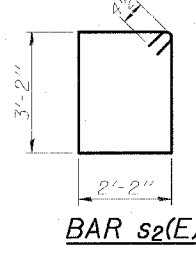
FIELD CUTTING DIAGRAM
Order v₂(E) bars full length. Cut as shown and use remainder of bars in opposite side.



BAR u₁(E) or u₄(E)



BAR u(E)



BAR s₂(E)

NORTH ABUTMENT, SOUTHBOUND
 INTERSTATE 57 OVER
 WEST MAIN ST. (OLD IL RT. 13)
 F.A.I. RT. 57 SEC. (X1-6)HBK-2
 WILLIAMSON COUNTY
 STATION 1529+96.11
 STRUCTURE NO. 100-0084 (N.B.)
 STRUCTURE NO. 100-0085 (S.B.)

DESIGN FIRM REGISTRATION No. 184-000450
Clark Dietz ENGINEERS
 1817 SOUTH NEIL STREET SUITE 100
 CHAMPAIGN, IL 61820
 PHONE : 217.373.8900 FAX : 217.373.8923

NOTE: DIMENSIONAL DATA IS NOT TO BE OBTAINED BY SCALING ANY PORTION OF THIS DRAWING.

DESIGNED BY: SMM	PROJECT NO: 102314
DRAWN BY: MEW	DATE: 05/2006
CHECKED BY: SLD	
APPROVED BY: SMM	
ACTIVITY INITIALS	

DRAWING NUMBER **S-20**