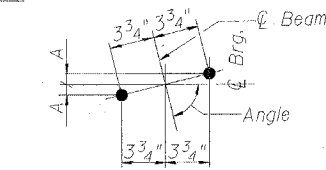


**NOTES**

1. Pour steps monolithically with cap.
2. The Steel H-Piles shall be according to AASHTO M270 Grade 50.
3. The test pile shall be driven to 110 percent of the Nominal Required Bearing indicated in the pile data information.

**NORTHBOUND SOUTH ABUTMENT BILL OF MATERIAL**

Bar	No.	Size	Length	Shape
h(E)	16	#5	9'-8"	—
h3(E)	2	#5	21'-2"	—
h7(E)	2	#5	11'-6"	—
h8(E)	2	#5	36'-10"	—
p1(E)	12	#7	43'-7"	—
p2(E)	12	#7	31'-8"	—
s2(E)	71	#4	11'-5"	□
u(E)	8	#6	7'-2"	—
u1(E)	22	#5	3'-0"	—
u4(E)	49	#5	3'-8"	—
v1(E)	137	#5	4'-4"	—
v2(E)	8	#5	10'-4"	—
Concrete Structures			Cu. Yds.	29.2
Reinforcement Bars, Epoxy Coated			Pound	3,740
Structure Excavation			Cu. Yds.	144
Furnishing Steel Piles, HP12x53			Foot	407
Driving Piles			Foot	407
Test Pile Steel HP12x53			Each	1
Bar Splicers			Each	14
Concrete Encasement			Cu. Yds.	4.2

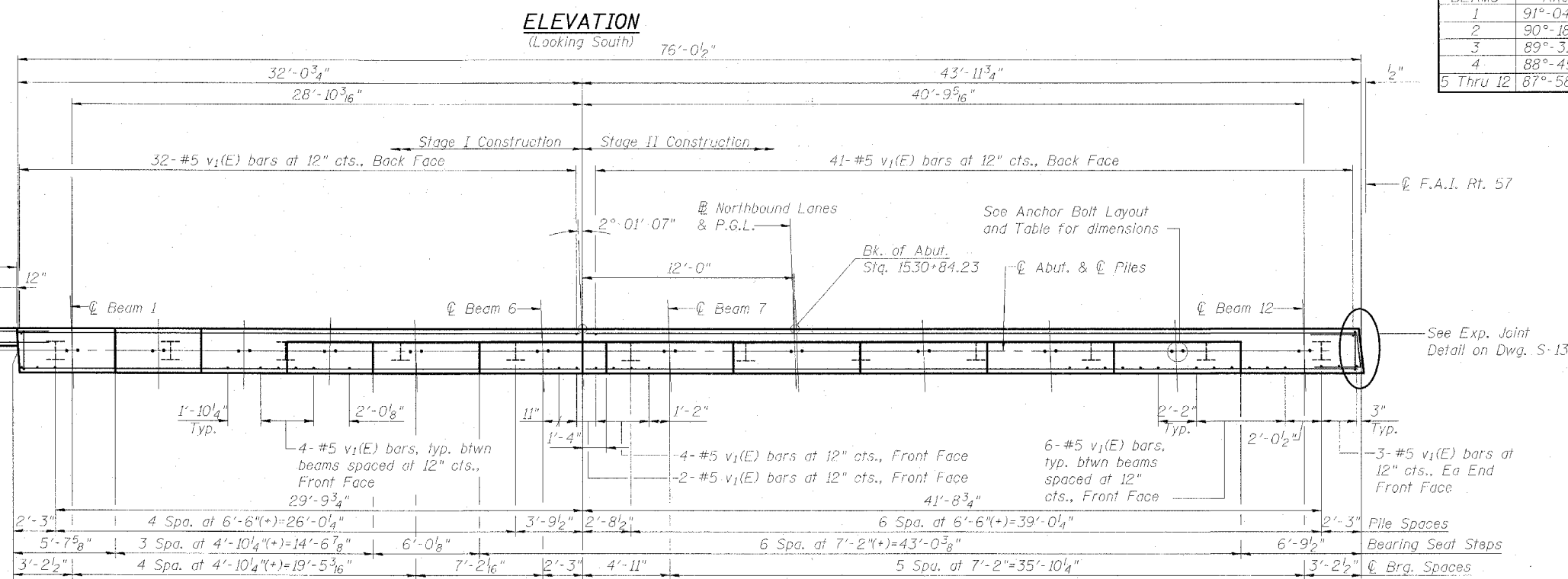


**ANCHOR BOLT LAYOUT**

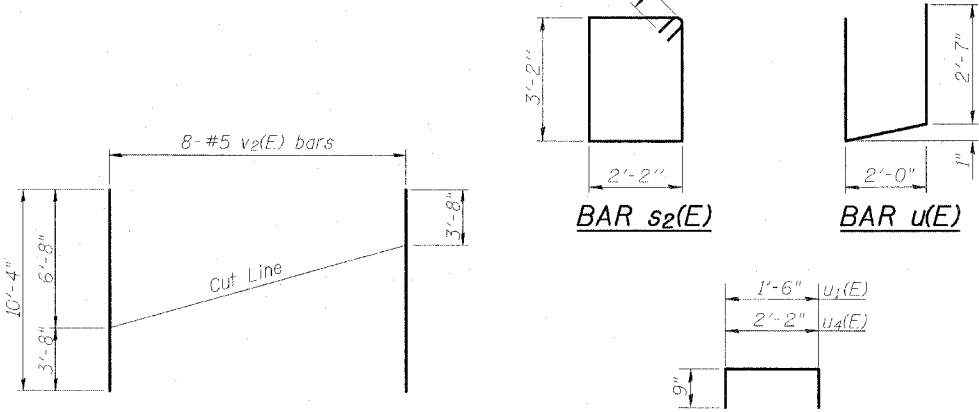
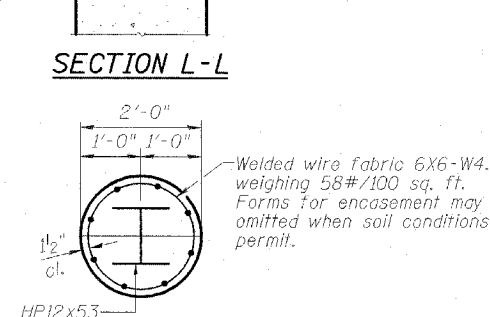
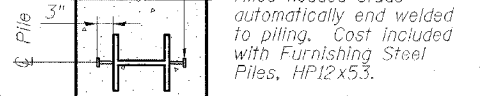
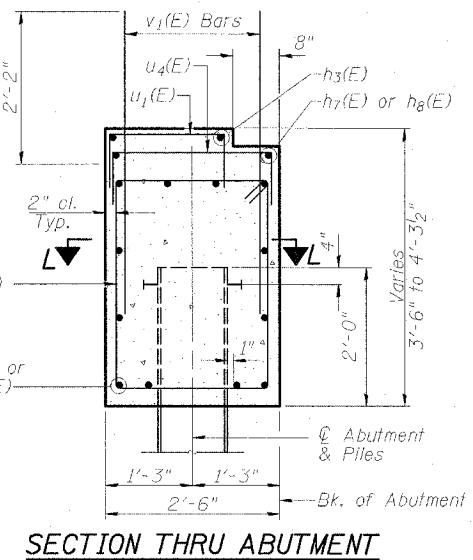
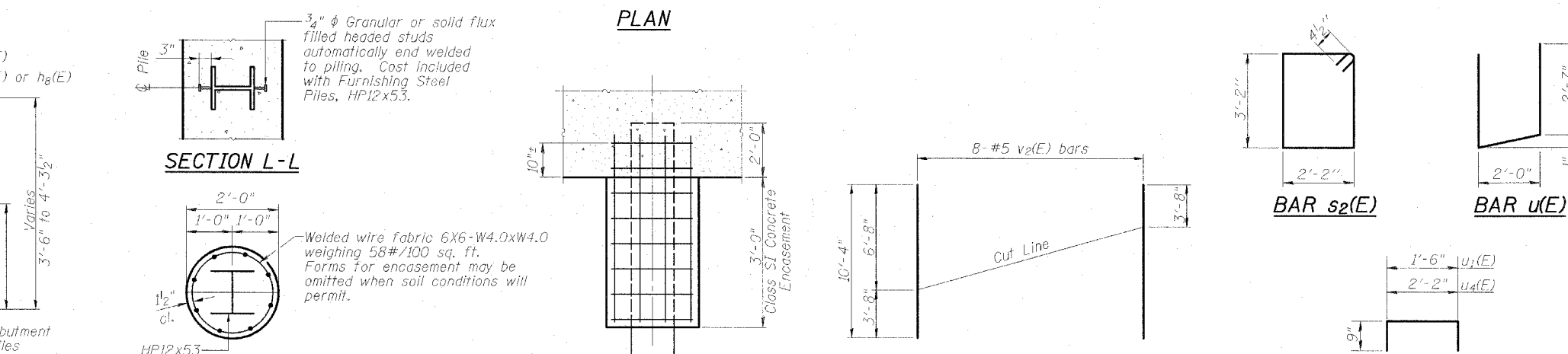
BEAMS	ANGLE	A
1	91°-04'-28"	1/16"
2	90°-18'-04"	0"
3	89°-31'-39"	0"
4	88°-45'-15"	1/16"
5 Thru 12	87°-58'-53"	1/8"

**PILE DATA**

Type: HP12x53  
 Nominal Req'd Bearing: 420k  
 Allowable Resistance Available: 140k  
 Est. Length: 37'  
 No. Req'd: 11 + 1 Test Pile



**PLAN**



**SOUTH ABUTMENT, NORTHBOUND**  
 INTERSTATE 57 OVER  
 WEST MAIN ST. (OLD IL RT. 13)  
 F.A.I. RT. 57 SEC. (X1-6)HBK-2  
 WILLIAMSON COUNTY  
 STATION 1529+96.11  
 STRUCTURE NO. 100-0084 (N.B.)  
 STRUCTURE NO. 100-0085 (S.B.)

DESIGN FIRM REGISTRATION  
 No. 184-000450  
**Clark Dietz**  
 ENGINEERS  
 1817 SOUTH NEIL STREET  
 SUITE 100  
 CHAMPAIGN, IL 61820  
 PHONE : 217.373.8900  
 FAX : 217.373.8923

NOTES: DIMENSIONAL DATA IS NOT TO BE OBTAINED BY SCALING ANY PORTION OF THIS DRAWING.  
 DRAWING NUMBER: S-21  
 DESIGNED BY: SHM PROJECT NO: 102314  
 DRAWN BY: MEW DATE: 05/28/06  
 CHECKED BY: SLD  
 APPROVED BY: SHM  
 ACTIVITY INITIALS