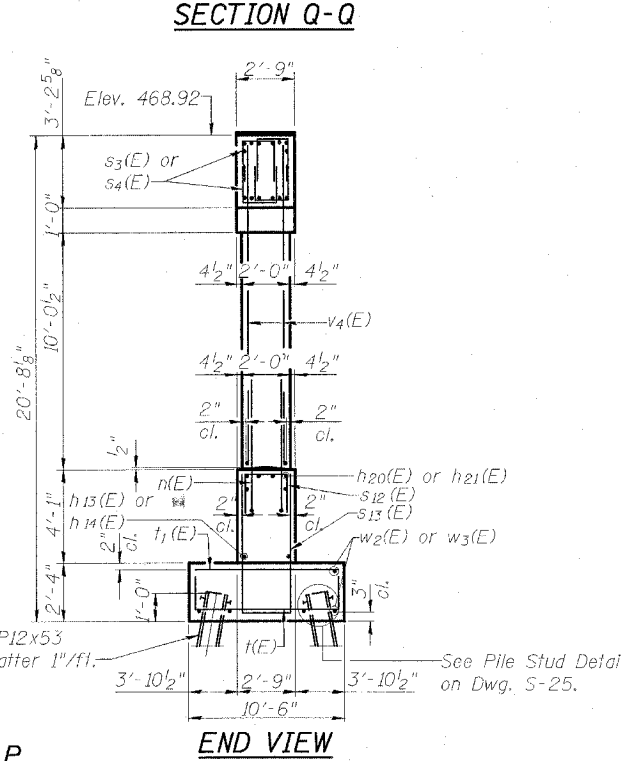
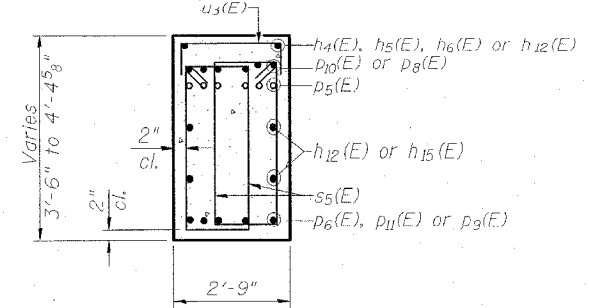
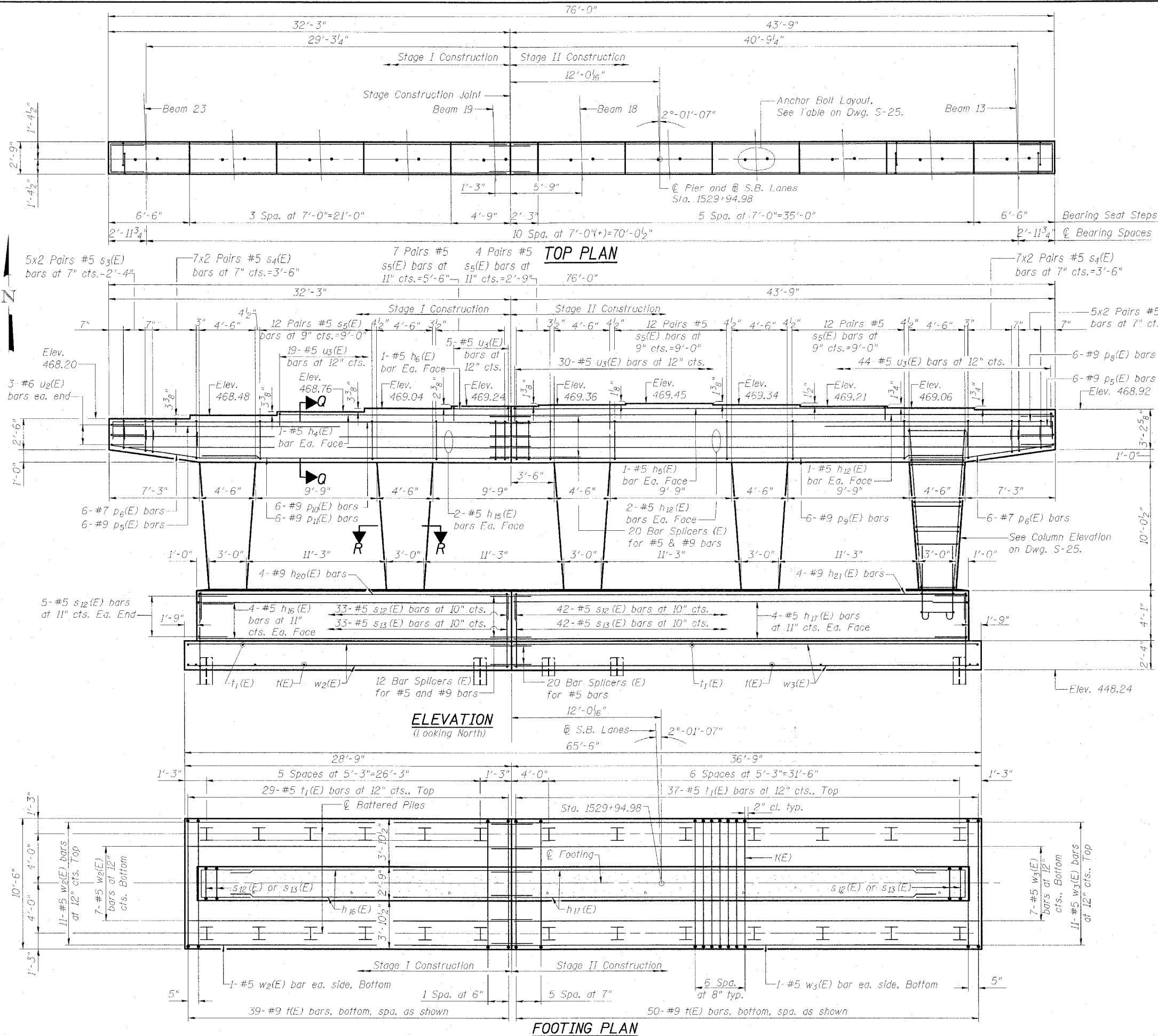


Notes

- See Dwg. S-26 for Fluted Rope Texture Details.
- Pour steps monolithically with cap.
- Space reinforcement in cap to miss anchor bolts.
- The Steel H-Piles shall be according to AASHTO M270 Grade 50.
- The test pile shall be driven to 110 percent of the Nominal Required Bearing indicated in the pile data information.



MIN. BAR LAP

#5	2'-2"
----	-------

PILE DATA

Type: HP12x53
Nominal Req'd Bearing: 420k
Allowable Resistance Available: 140k
Est. Length: 20'
No. Req'd: 25 + 1 Test Pile

PIER, SOUTHBOUND

INTERSTATE 57 OVER
WEST MAIN ST. (OLD IL RT. 13)
F.A.I. RT. 57 SEC. (X1-6)HBK-2
WILLIAMSON COUNTY
STATION 1529+96.11
STRUCTURE NO. 100-0084 (N.B.)
STRUCTURE NO. 100-0085 (S.B.)

DESIGN FIRM REGISTRATION
No. 184-000450
Clark Dietz
ENGINEERS
1817 SOUTH NEIL STREET
SUITE 100
CHAMPAIGN, IL 61820
PHONE : 217.373.8900
FAX : 217.373.8923

NOTE: DIMENSIONAL DATA IS NOT TO BE OBTAINED BY SCALING ANY PORTION OF THIS DRAWING.

DESIGNED BY: SHM PROJECT NO: 102314
DRAWN BY: MEW DATE: 05/20/06
CHECKED BY: SLD
APPROVED BY: SHM
ACTIVITY: DETAILS

DRAWING NUMBER
S-24

For Section R-R and Bill of Material see Dwg. S-25