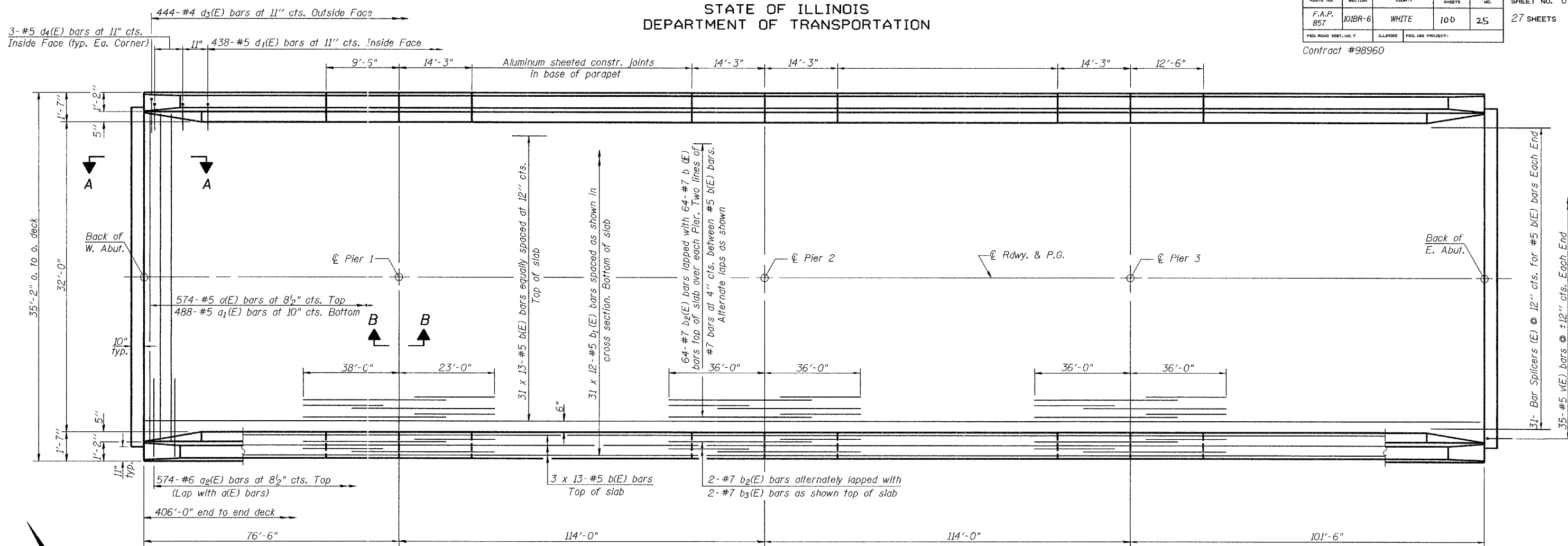


STATE OF ILLINOIS
DEPARTMENT OF TRANSPORTATION

ROUTE NO. F.A.P. 857	SECTION 101BR-6	COUNTY WHITE	TOTAL SHEETS 100	SHEET NO. 25	SHEET NO. 6 27 SHEETS
FED. ROAD DIST. NO. 7		ILLINOIS FED. AID PROJECT			

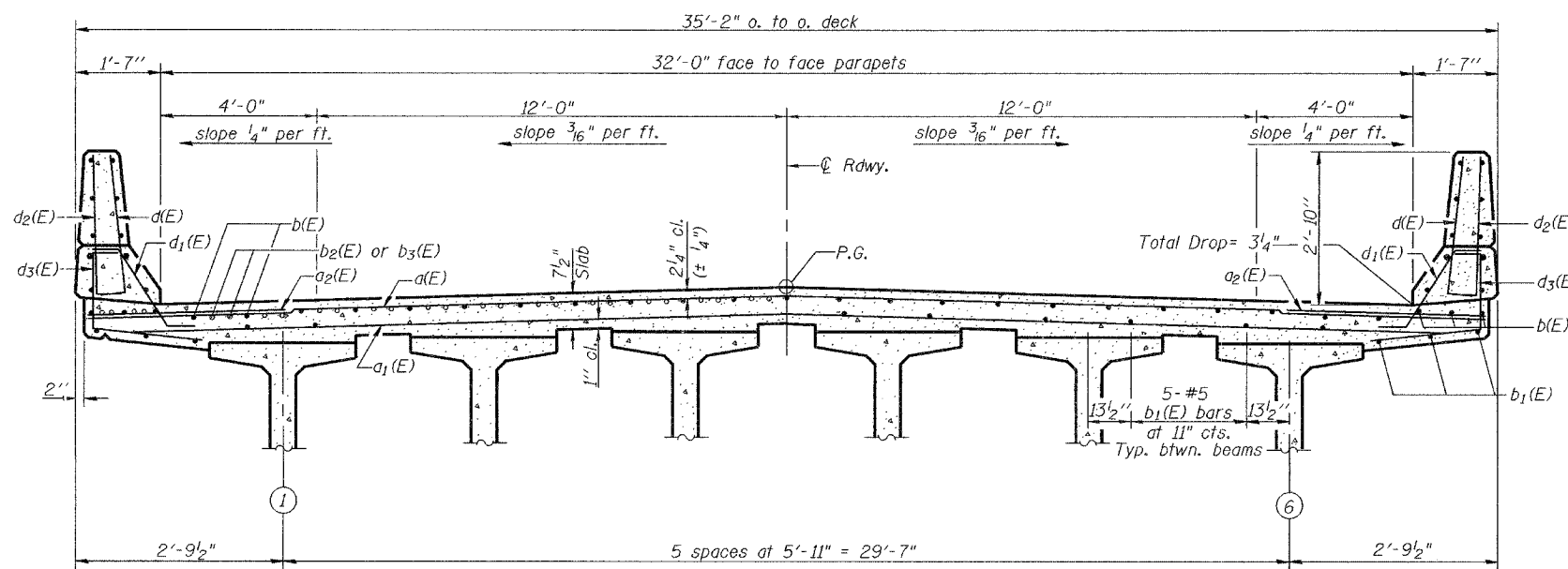
Contract #98960



PLAN

MIN. BAR LAPS

#5 bars = 1'-8"
#7 bars = 3'-5"



CROSS SECTION
(Looking East)

Notes: See sheet 7 of 27 for superstructure details and Bill of Material.
See sheet 8 & 9 of 27 for Sections A-A & B-B at Abutments and Piers.
Bars indicated thus 31 x 13-#5 etc. indicates 31 lines of bars with 13 lengths per line.
Cut longitudinal reinforcement to clear drainage scouppers.

DESIGNED	Daniel H. Tobias
CHECKED	W. A. Beisner
DRAWN	R. Sommer
CHECKED	WAB/FT

December 4 2006
EXAMINED *Thomas J. Domagalicki*
PASSED *Ralph E. Anderson*
ENGINEER OF PUBLIC DESIGN
ENGINEER OF BRIDGES AND STRUCTURES

SUPERSTRUCTURE
F.A.P. RT. 857 SEC. 101BR-6
WHITE COUNTY
STATION 171+58.50
STRUCTURE NO. 097-0071