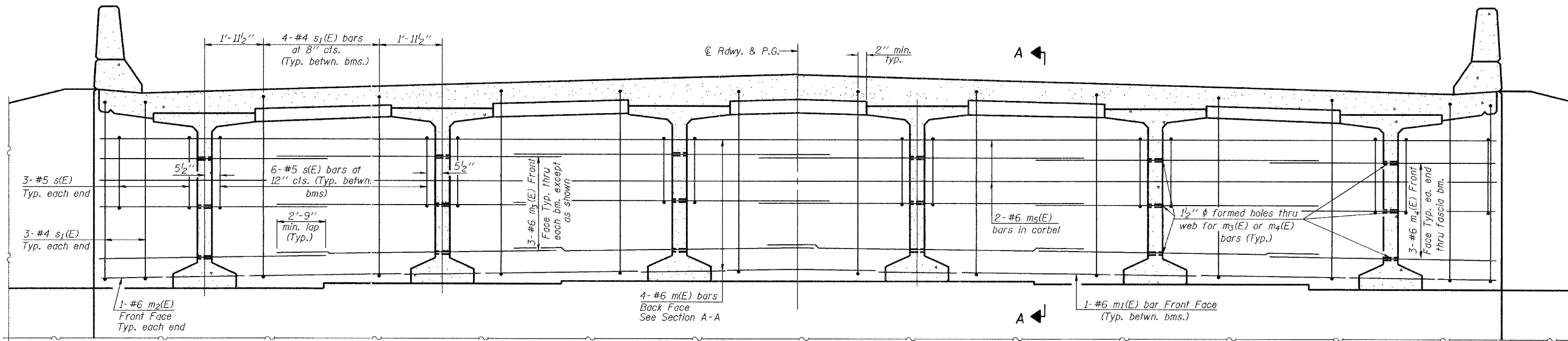


STATE OF ILLINOIS  
DEPARTMENT OF TRANSPORTATION

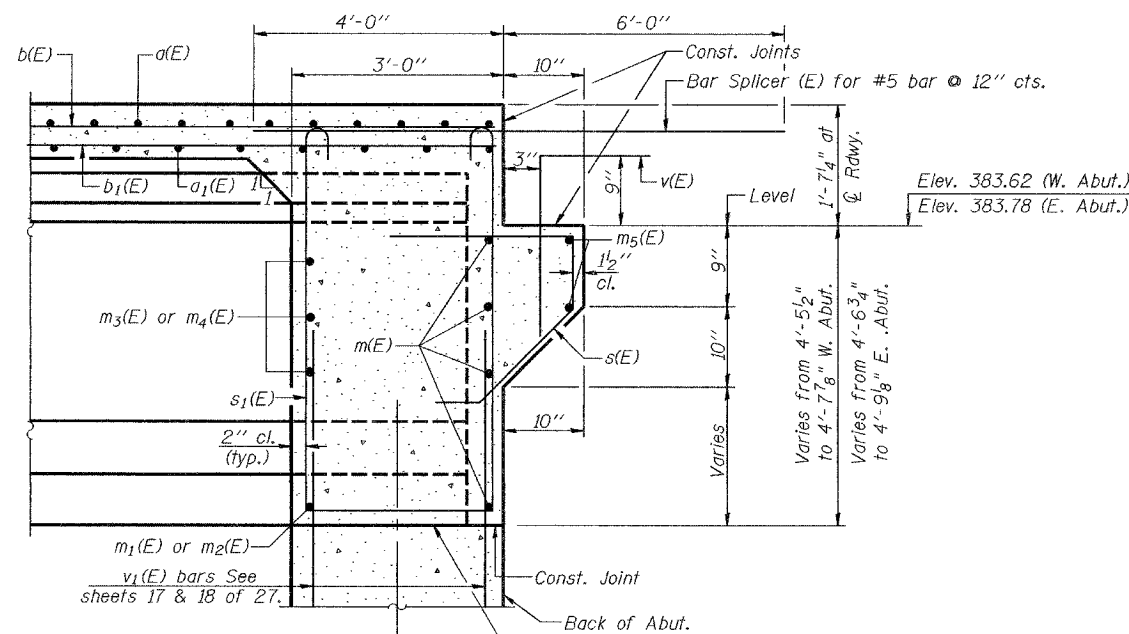
ROUTE NO.	SECTION	COUNTY	TOTAL SHEETS	SHEET NO.	SHEET NO. 8
F.A.P. 857	101BR-6	WHITE	100	27	27 SHEETS
FED. ROAD DIST. NO. 7	B.LININGS	FED. AID PROJECT-			

Contract #98960



ELEVATION AT ABUTMENTS

MIN. BAR LAP  
#6 bar = 2'-9"



SECTION A-A  
Dimensions at right angles to abutment

Notes: Reinforcement bars in diaphragms are billed with superstructure on sheet 7 of 27.  
Concrete in diaphragm is included with Concrete Superstructure on sheet 7 of 27.  
For details of bars s(E), s1(E) and v(E) see sheet 7 of 27.  
The s(E) and s1(E) bars shall be placed parallel to the beams. Spacing for these bars shall be at right angles to the beams.

DESIGNED	Daniel H. Tobias
CHECKED	W. A. Belsner
DRAWN	R. Sommer
CHECKED	WAB/FT

December 4, 2006  
EXAMINED *Thomas J. Domagalaki*  
ENGINEER OF BRIDGE DESIGN  
PASSED *Ralph E. Anderson*  
ENGINEER OF BRIDGES AND STRUCTURES

DIAPHRAGM DETAILS  
F.A.P. RT. 857 SEC. 101BR-6  
WHITE COUNTY  
STATION 171+58.50  
STRUCTURE NO. 097-0071