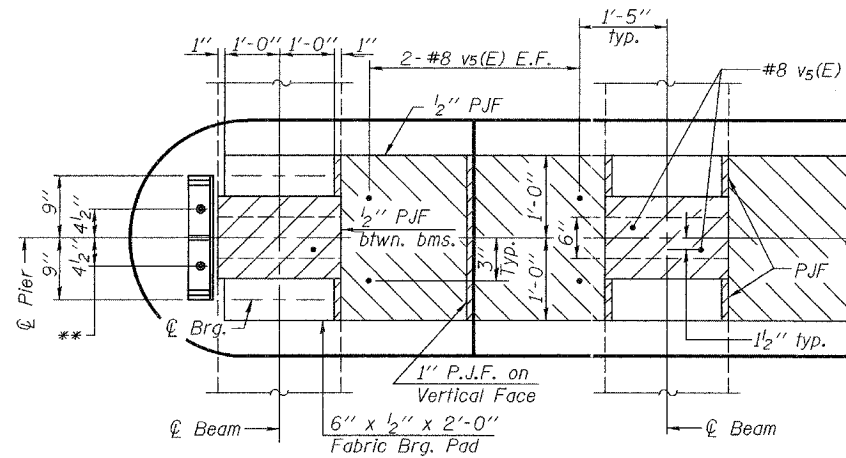


STATE OF ILLINOIS  
DEPARTMENT OF TRANSPORTATION

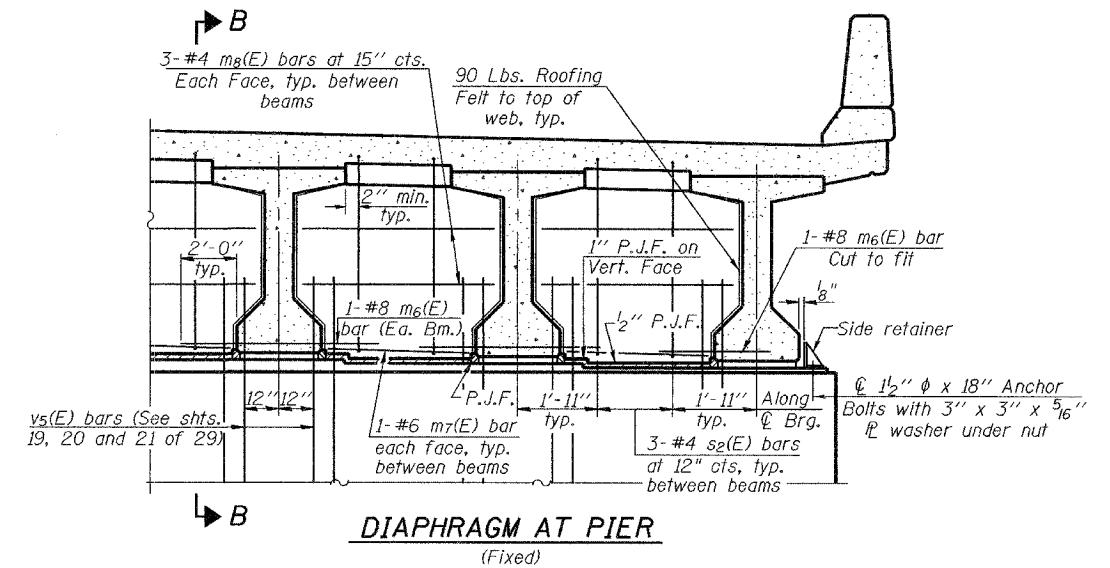
ROUTE NO.	SECTION	COUNTY	TOTAL SHEETS	SHEET NO.
F.A.P. 857	10IBR-6	WHITE	100	28
FED. ROAD DIST. NO. 7	ILLINOIS	FED. AID PROJECT-		

Contract #98960

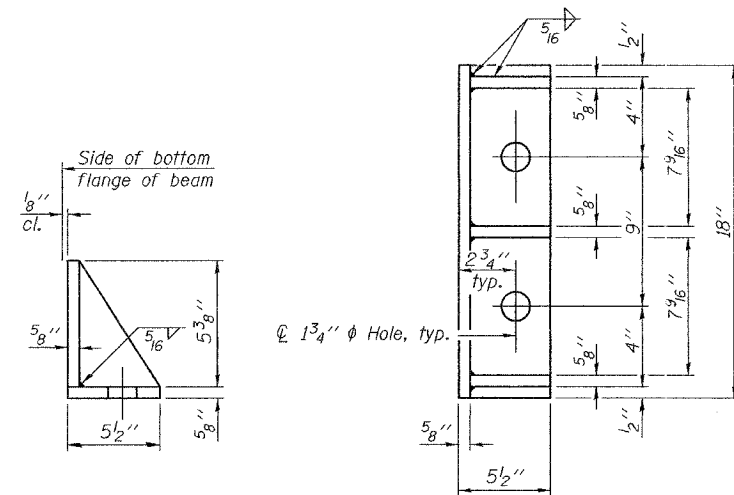


**FIXED PIER DETAIL**

\*\* $\varnothing$  1/2"  $\phi$  x 18" Anchor bolts with 3" x 3" x 5/16" fl washer under nut. Holes in cap to be drilled after beams are in place.



**DIAPHRAGM AT PIER**  
(Fixed)

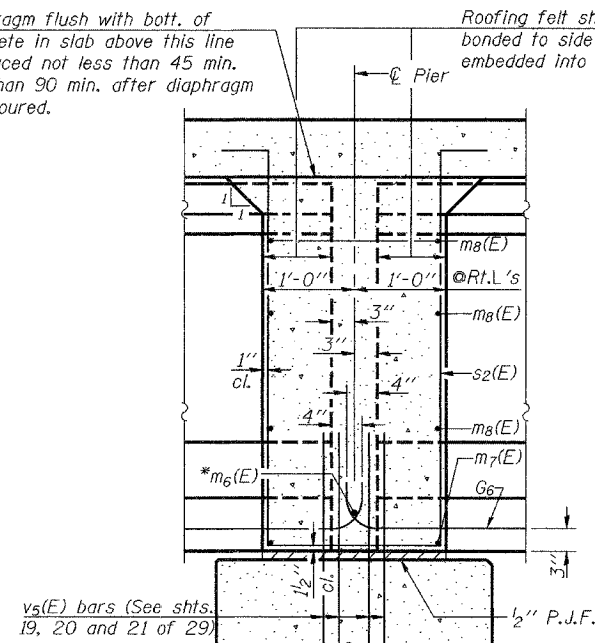


**SIDE RETAINER**

Equivalent rolled angle with stiffeners will be allowed in lieu of welded plates.

Pour diaphragm flush with bott. of slab. Concrete in slab above this line shall be placed not less than 45 min. nor more than 90 min. after diaphragm has been poured.

Roofing felt shall be bonded to side of beam embedded into diaphragm.



**SECTION B-B AT PIER**  
(Fixed)

\*Tightly fasten the #8 bars together with No. 9 wire ties.

Notes:  
Reinforcement bars in diaphragm are billed with superstructure on sheet 7 of 27.  
Concrete in diaphragm is included with Concrete Superstructure on sheet 7 of 27.  
The s<sub>2</sub>(E) bars shall be placed parallel to the beams. Spacing for these bars shall be at right angles to the beams.  
Cost of 90 Lb. roofing felt is included with Concrete Superstructure. See sheet 11 of 27 for anchor bolt details.  
Horizontal dimensions for Sec. B-B are along  $\varnothing$  of beam unless otherwise noted.  
All side retainers, anchor bolts, nuts and washers shall be galvanized according to AASHTO M111 or M232 (as applicable). Cost of side retainers and anchor bolts shall be included with Concrete Structures.  
For details of s<sub>2</sub>(E) bars, See sheet 7 of 27.

**DIAPHRAGM DETAILS**  
F.A.P. RT. 857 SEC. 10IBR-6  
WHITE COUNTY  
STATION 171+58.50  
STRUCTURE NO. 097-0071

DESIGNED	Daniel H. Tobias
CHECKED	W. A. Beisner
DRAWN	R. Sommer
CHECKED	WAB/FT

EXAMINED	December 4 2006 Thomas J. Domagalaki ENGINEER OF BRIDGE DESIGN
PASSED	Ralph E. Anderson ENGINEER OF BRIDGES AND STRUCTURES