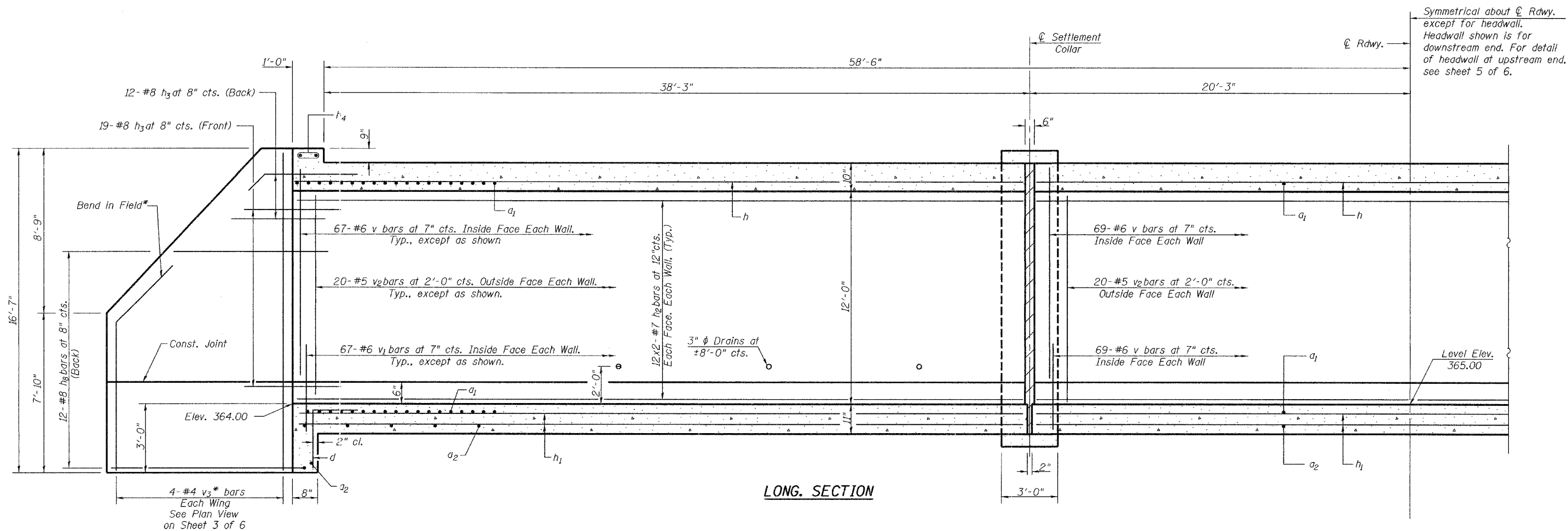


STATE OF ILLINOIS  
DEPARTMENT OF TRANSPORTATION

ROUTE NO.	SECTION	COUNTY	TOTAL SHEETS	SHEET NO.
F.A.P. 857	101BR-6	WHITE	100	50
FED. ROAD DIST. NO. 7	ILLINOIS	FED. AID PROJECT		

SHEET NO. 4  
6 SHEETS

Contract #98960



Symmetrical about  $\text{C.Rdwy.}$  except for headwall. Headwall shown is for downstream end. For detail of headwall at upstream end, see sheet 5 of 6.

LONG SECTION

\* Cut bars so that no more than 5'-0" of bar is in bent section.

**MIN. BAR LAP**  
#7 Bar = 2'-9"

DESIGNED	Angela J. Bryant
CHECKED	Fess Teklehaimanot
DRAWN	Greg D. Farmer
CHECKED	AJB/FT

December 4, 2006  
 EXAMINED *Thomas J. Donagahski*  
 PASSED *Ralph E. Anderson*  
ENGINEER OF BRIDGE DESIGN  
ENGINEER OF BRIDGES AND STRUCTURES

Notes:  
 Bars indicated thus 12x2-#7 etc. indicates 12 lines of bars with 2 lengths per line.  
 For Settlement Collar details, see sheet 6 of 6.  
 For Section Thru Barrel, bar details, and Bill of Material see sheet 5 of 6.

**CULVERT DETAILS**  
 F.A.P. RT. 857 SEC. 101BR-6  
 WHITE COUNTY  
 STATION 175+78.00  
 STRUCTURE NO. 097-2014