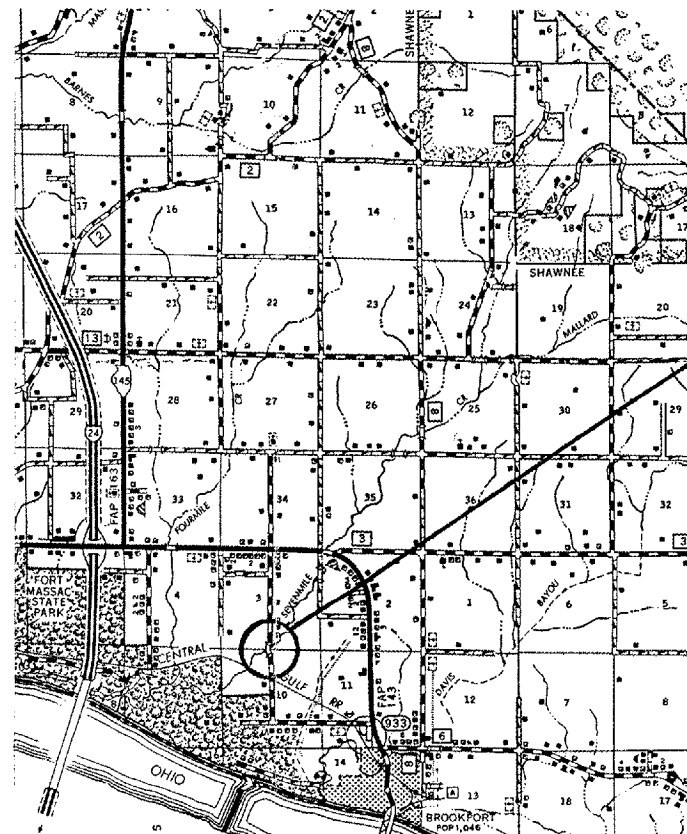


STATE OF ILLINOIS
DEPARTMENT OF TRANSPORTATION
PLANS FOR PROPOSED
HIGHWAY BRIDGE PROGRAM

TOWNSHIP ROUTE 110 (STRAWBERRY ROAD)
SECTION 83-01171-00-BR
PROJECT NO. BR-OS-127(12)
JOB NO. C-99-066-84
SEVENMILE CREEK

MASSAC COUNTY

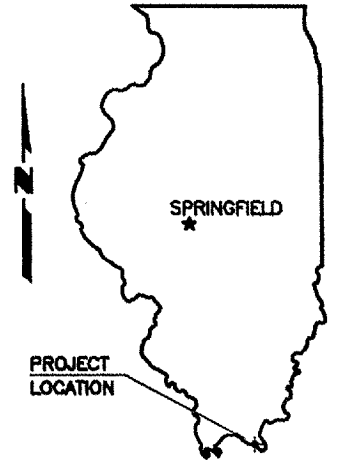


LOCATION MAP

SCALE: 1" = 2 MILES

NET LENGTH OF IMPROVEMENT = 870.00 FT. = 0.1648 MILES

ROUTE	SECTION	COUNTY	TOTAL SHEETS	SHEET NO.
TR 110	83-01171-00-BR	MASSAC	15	1
PROJECT NO. BR-OS-127(12)			CONTRACT NO. 99282	



SUMMARY OF QUANTITIES

CODE NO.	PAY ITEM	UNIT	TOTAL
20100110	TREE REMOVAL (6 TO 15 UNITS DIAMETER)	UNIT	62
20100210	TREE REMOVAL (OVER 15 UNITS DIAMETER)	UNIT	322
20101000	TEMPORARY FENCE	FOOT	60
20200100	EARTH EXCAVATION	CU YD	197
20300100	CHANNEL EXCAVATION	CU YD	769
20400100	BORROW EXCAVATION	CU YD	2,388
25000200	SEEDING, CLASS 2	ACRE	0.8
25000400	NITROGEN FERTILIZER NUTRIENT	POUND	72
25000500	PHOSPHORUS FERTILIZER NUTRIENT	POUND	72
25000600	POTASSIUM FERTILIZER NUTRIENT	POUND	72
25000700	AGRICULTURAL GROUND LIMESTONE	TON	4
25100630	EROSION CONTROL BLANKET	SQ YD	3,330
28000250	TEMPORARY EROSION CONTROL SEEDING	POUND	70
28000300	TEMPORARY DITCH CHECKS	EACH	6
28000400	PERIMETER EROSION BARRIER	FOOT	560
28000500	INLET AND PIPE PROTECTION	EACH	2
28100807	STONE DUMPED RIPRAP, CLASS A4	TON	205
40200800	AGGREGATE SURFACE COURSE, TYPE B	TON	780
50100100	REMOVAL OF EXISTING STRUCTURES	EACH	1
50200100	STRUCTURE EXCAVATION	CU YD	7
50300225	CONCRETE STRUCTURES	CU YD	37.6
50300280	CONCRETE ENCASEMENT	CU YD	17.3
50400405	PRECAST PRESTRESSED CONCRETE DECK BEAMS (21" DEPTH)	SQ FT	2,640
50800105	REINFORCEMENT BARS	POUND	4,340
50900205	STEEL RAILING, TYPE S1	FOOT	220
51201005	FURNISHING METAL SHELL PILES 12"	FOOT	658
51202305	DRIVING PILES	FOOT	658
51203200	TEST PILE METAL SHELL	EACH	2
51500100	NAME PLATES	EACH	1
54200220	PIPE CULVERTS, CLASS D, TYPE 1 15"	FOOT	22
* 63000000	STEEL PLATE BEAM GUARD RAIL, TYPE A	FOOT	50
* 63100075	TRAFFIC BARRIER TERMINAL TYPE 5A	EACH	2
* 63100167	TRAFFIC BARRIER TERMINAL, TYPE 1, SPECIAL (TANGENT)	EACH	2
67100100	MOBILIZATION	L SUM	1
* 78201000	TERMINAL MARKER - DIRECT APPLIED	EACH	4

* SPECIALTY ITEMS

JOINT UTILITY LOCATION INFORMATION FOR EXCAVATION
J.U.L.I.E. 1-800-892-0123
CONTACT 48 HOURS BEFORE EXCAVATING

CONTRACT NO. 99282

E. MILLER ENGINEERING, INC.
CONSULTING ENGINEERS
HARRISBURG, ILLINOIS



Edward W. Miller
11-14-06

Edward W. Miller
PROFESSIONAL ENGINEER
#062-025277
EXPIRES NOV. 30, 2007

INDEX OF SHEETS

1. COVER SHEET
 2. PLAN AND PROFILE
 3. EROSION CONTROL PLAN
 4. GENERAL PLAN AND ELEVATION
 5. SUPERSTRUCTURE SPAN 1 & 3
 6. SUPERSTRUCTURE SPAN 2
 7. DECK BEAMS 21" X 36"
 8. DECK BEAMS 21" X 48"
 9. ABUTMENTS
 10. PIERS
 11. STEEL RAILING
 12. NAME PLATES
 13. PILE DETAILS
 - 14.-15. CROSS SECTIONS
- STANDARDS 280001-03 TEMPORARY EROSION CONTROL
630301-04 SHOULDER WIDENING
631026-03 TRAFFIC BARRIER TERMINAL TYPE 5
635006-02 TERMINAL MARKER PLACEMENT
702001-06 TRAFFIC CONTROL DEVICES
BLR-21-6 TRAFFIC CONTROL

CLASSIFICATION : LOCAL ROAD
ADT : 275
DESIGN SPEED : 40 MPH

STATE OF ILLINOIS DEPARTMENT OF TRANSPORTATION		
APPROVED	<i>Raymond J. ...</i> Co. Engineer	12-6-06
LOCAL AGENCY REPRESENTATIVE		
PASSED	<i>Dem. W. Hillel</i> 1/17/07	
ENGINEER OF LOCAL ROADS AND STREETS		
APPROVED	<i>Mary C. Lamie</i> 1/18/07	
MARY C. LAMIE, P.E. DEPUTY DIRECTOR OF HIGHWAYS REGION FIVE ENGINEER		