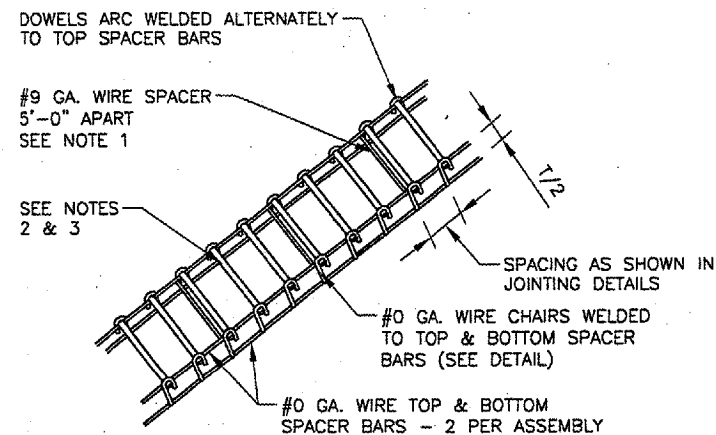


IMAGE FILES:

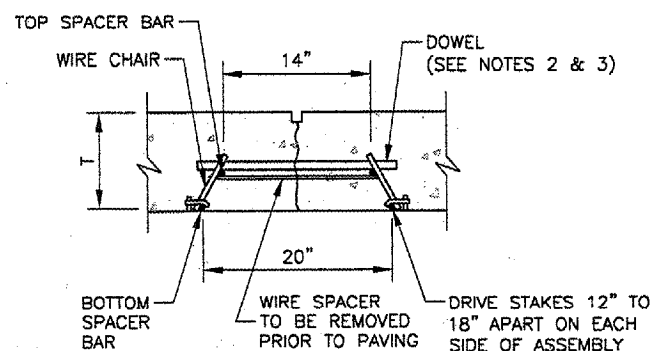
REVISIONS

NUMBER	BY	DATE

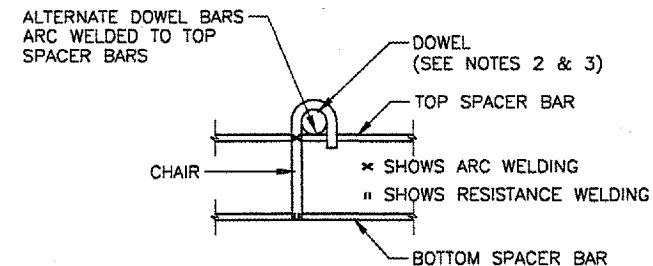
0 1 2  
 THIS BAR IS EQUAL TO 2" AT FULL SCALE (34X22).



**DOWEL BASKET ASSEMBLY DETAILS AND NOTES**  
 N.T.S.



**DOWEL BAR INSTALLATION DETAIL**  
 N.T.S.

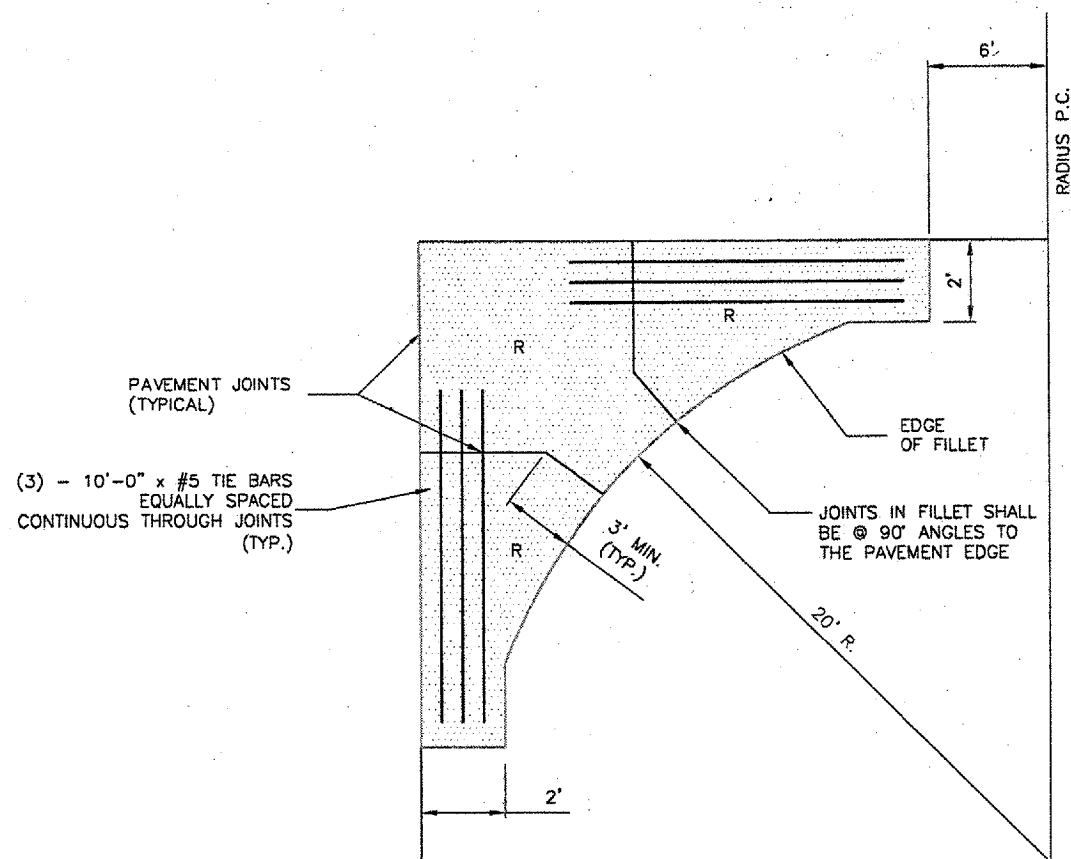


**TYPICAL DOWEL BASKET ELEVATION DETAIL SHOWING CHAIR**  
 N.T.S.

**DOWEL BASKET NOTES**

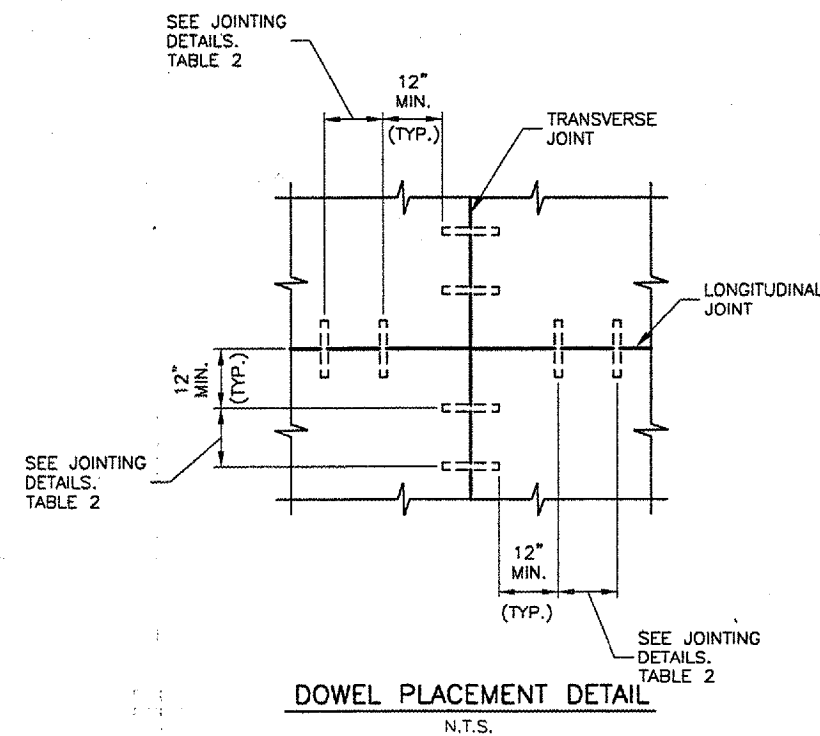
- #9 GA. WIRE SPACER BAR ARC WELDED TO THE BOTTOM OF TOP SPACER BAR. (MAY BE MECHANICALLY ATTACHED IN LIEU OF WELDING) 3 REQUIRED PER UNIT. THIS WIRE MUST BE CUT OR REMOVED PRIOR TO PAVING.
- DOWEL BAR DIAMETER, LENGTH & SPACING SHALL BE AS SHOWN IN TABLE 2 JOINTING DETAILS 1.
- DOWELS SHALL BE EPOXY COATED FULL LENGTH OF DOWEL. IMMEDIATELY PRIOR TO PAVING, THE FREE END OF EACH DOWEL SHALL BE LUBRICATED OR OILED, FOR HALF THE LENGTH OF THE DOWEL.

**DOWEL BASKET DETAILS**  
 N.T.S.



R DENOTES ODD SHAPED REINFORCED PANELS TO BE REINFORCED WITH WELDED WIRE FABRIC AS SHOWN ON JOINTING DETAILS SHEET. ALL NON RECTANGULAR SHAPED PANELS SHALL BE REINFORCED. (REINFORCEMENT NOT SHOWN)

**FILLET DETAIL AND FILLET REINFORCING LAYOUT**  
 N.T.S.



BLOOMINGTON-NORMAL AIRPORT AUTHORITY  
 CENTRAL ILLINOIS REGIONAL AIRPORT  
 BLOOMINGTON, ILLINOIS

UPGRADE PERIMETER FENCE PHASE 1

JOINTING DETAILS 2

© Copyright CMT, Inc.  
**CMT**  
 CRAWFORD, MURPHY & TILLY, INC.  
 CONSULTING ENGINEERS  
 License No. 184-00010

DESIGN BY: CBG  
 DRAWN BY: CMT  
 CHECKED BY: RLV  
 APPROVED BY: RLV  
 DATE: 1/12/2007  
 JOB No: 06085-03-00  
 ILLINOIS PROJECT BMI-3653  
 A.I.P. PROJECT 3-17-0006-47  
 SHEET 12 OF 26 SHEETS