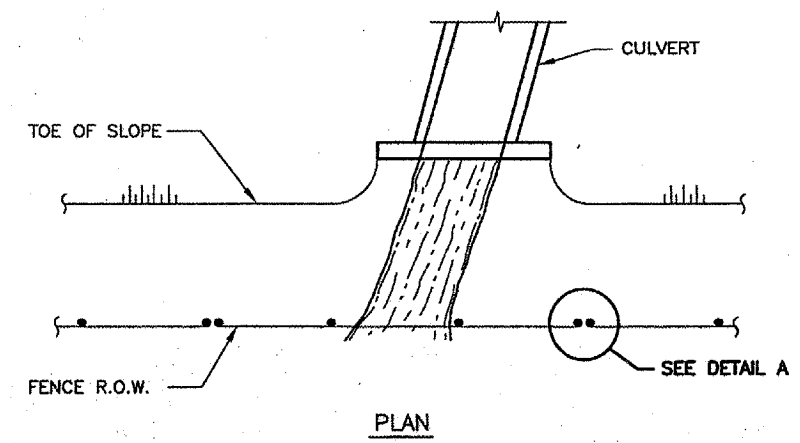


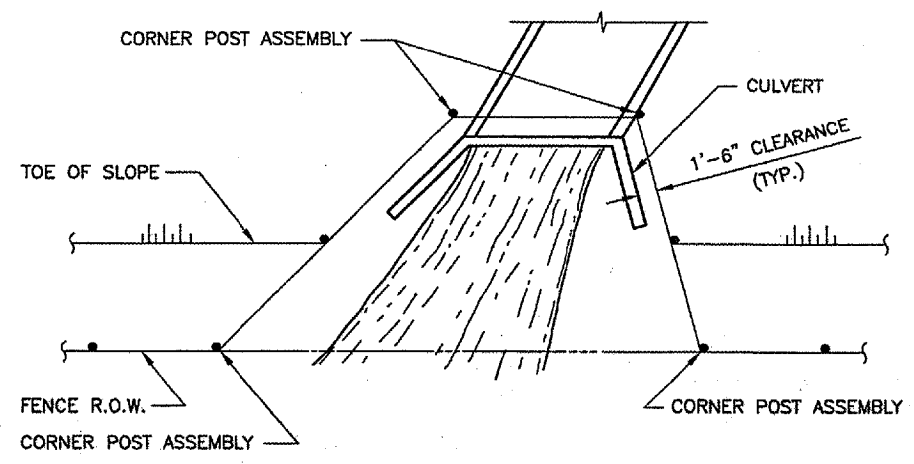
IMAGE FILES:

REVISIONS		
NUMBER	BY	DATE

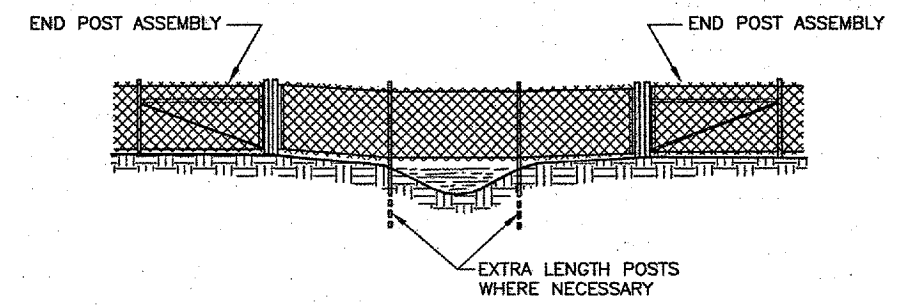
0 1 2
 THIS BAR IS EQUAL TO 2"
 AT FULL SCALE (34X22).



PLAN

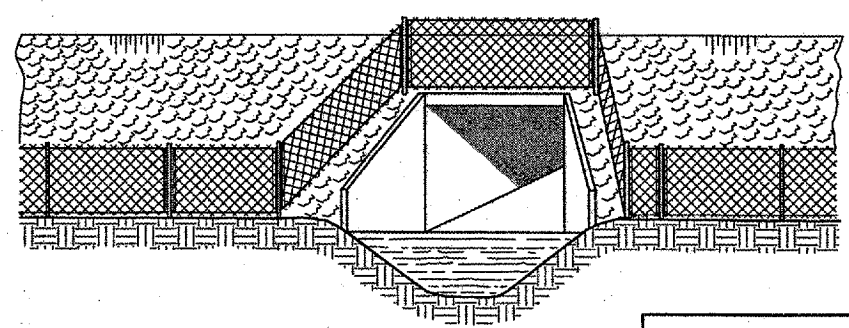


PLAN



ELEVATION

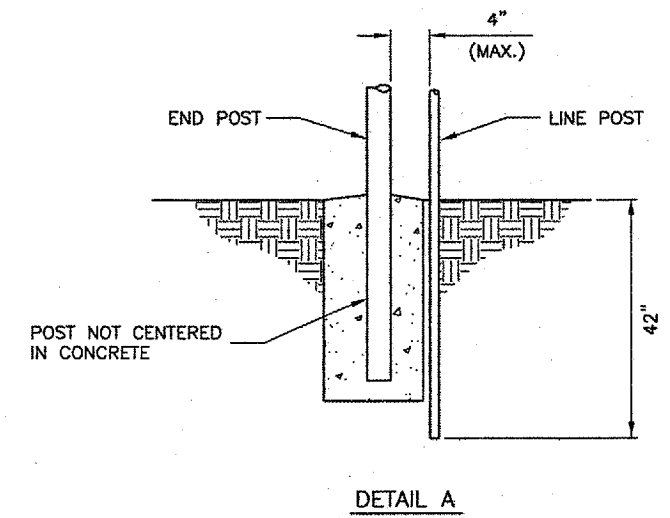
THE CHAIN LINK FABRIC SHALL BE REPLACED BY BARBED WIRE STRANDS AT 12" MAXIMUM CENTERS BETWEEN THE DOUBLE POSTS SHOWN ON DETAIL A WHEN SHOWN ON THE PLANS.



ELEVATION

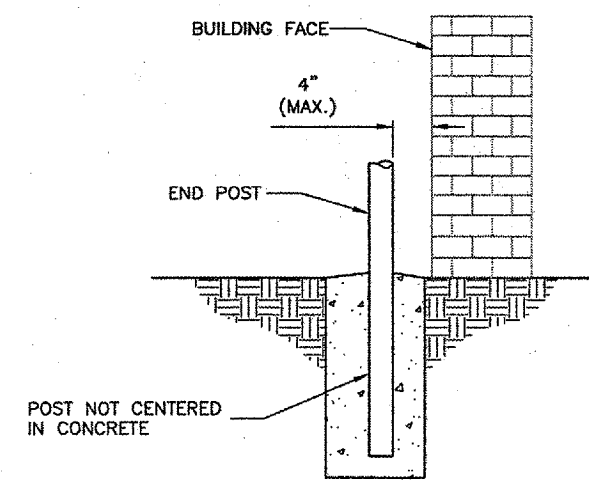
WHEN THE WIDTH OF THE CULVERT MAKES IT NECESSARY TO ANCHOR A POST TO THE TOP OF THE CULVERT, A CAST IRON SHOE OR OTHER DEVICE APPROVED BY THE ENGINEER SHALL BE USED.

FENCE INSTALLATION AROUND HEADWALL DETAILS
 N.T.S.



DETAIL A

FENCE INSTALLATION OVER STREAM DETAILS
 N.T.S.



FENCE INSTALLATION AT BUILDING FACE
 N.T.S.

BLOOMINGTON-NORMAL AIRPORT AUTHORITY
 CENTRAL ILLINOIS REGIONAL AIRPORT
 BLOOMINGTON, ILLINOIS
 UPGRADE PERIMETER FENCE PHASE 1
 FENCE DETAILS 2

© Copyright CMT, Inc.
CMT
 CRAWFORD, MURPHY & TILLY, INC.
 CONSULTING ENGINEERS
 License No. 184-000813

DESIGN BY:	CBG
DRAWN BY:	CMT
CHECKED BY:	RLV
APPROVED BY:	RLV
DATE:	1/12/2007
JOB No:	06085-03-00
ILLINOIS PROJECT	BMI-3653
A.I.P. PROJECT	3-17-0006-47
SHEET	15 OF 26 SHEETS