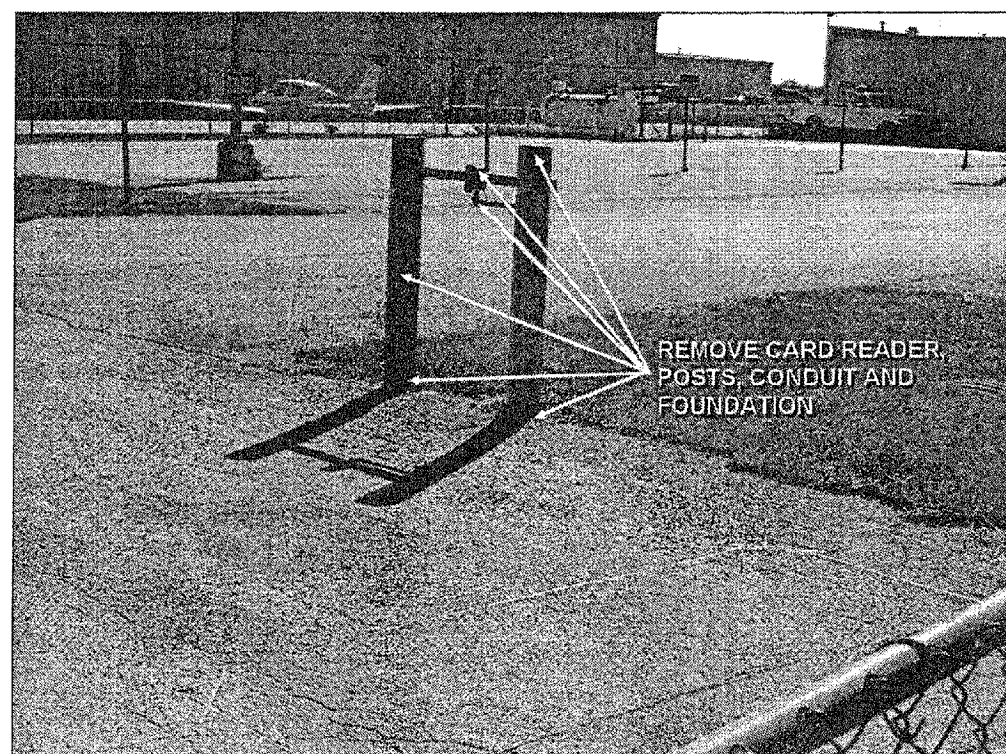
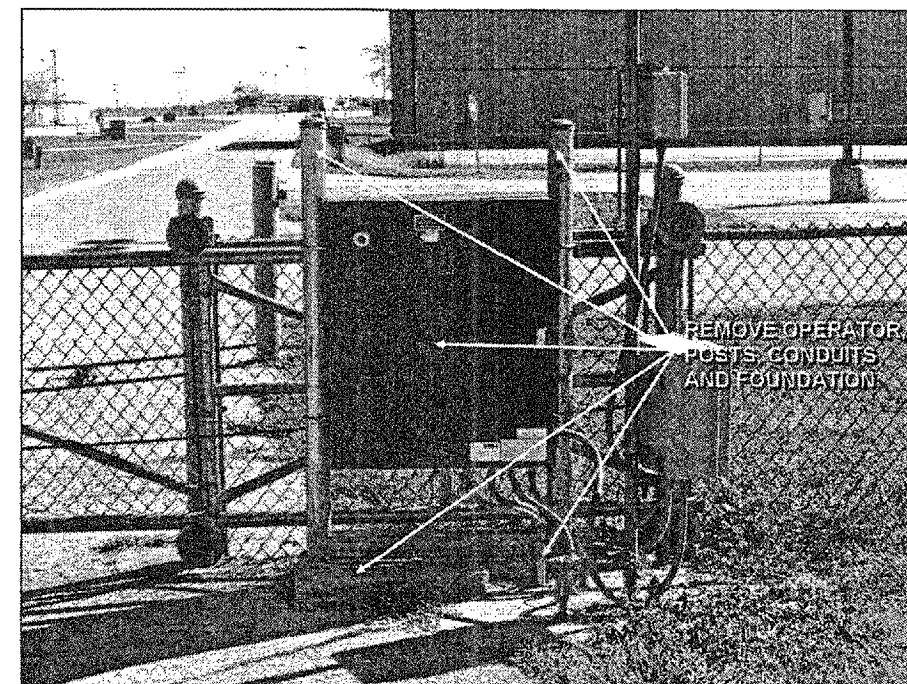
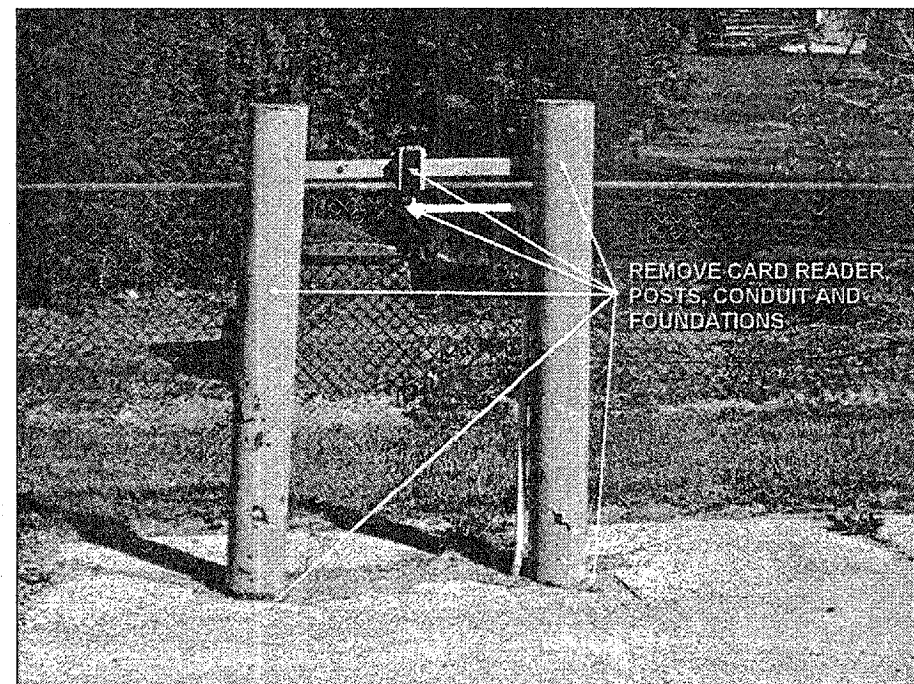
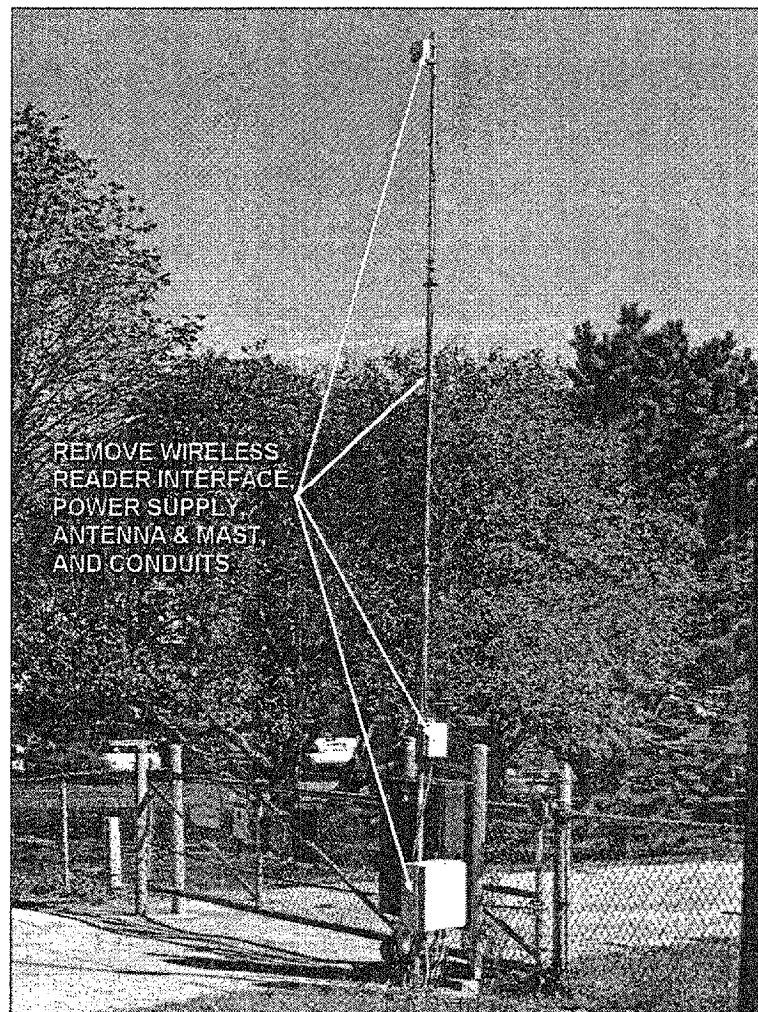
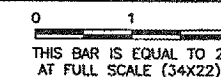


REVISIONS

NUMBER	BY	DATE



GATE 17 REMOVAL NOTES

- 1) REMOVE GATE OPERATOR AND TURN OVER TO THE AIRPORT.
- 2) REMOVE GATE OPERATOR FOUNDATION AND DISPOSE OF OFFSITE.
- 3) REMOVE ALL CONDUIT TO 1 FOOT (1') MINIMUM BELOW GRADE.
- 4) DISCONNECT AND REMOVE BOTH PROXIMITY CARD READERS AND TURN OVER TO THE AIRPORT.
- 5) REMOVE CARD READER POSTS AND FOUNDATIONS AND DISPOSE OF OFFSITE.
- 6) DISCONNECT AND REMOVE WIRELESS READER INTERFACE, POWER SUPPLY AND ANTENNA AND TURN OVER TO THE AIRPORT.
- 7) REMOVE ANTENNA MAST AND FOUNDATION AND DISPOSE OF OFFSITE.
- 8) RESTORE DISTURBED EARTH, LANDSCAPE, SEED, PROTECT AND FERTILIZE PER SPECIFICATIONS.

**BLOOMINGTON-NORMAL AIRPORT AUTHORITY
 CENTRAL ILLINOIS REGIONAL AIRPORT
 BLOOMINGTON, ILLINOIS**

UPGRADE PERIMETER FENCE PHASE 1

EXISTING GATE 17 REMOVALS

© Copyright CMT, Inc.
CMT
 CRAWFORD, MURPHY & TILLY, INC.
 CONSULTING ENGINEERS
 License No. 184-000618



DESIGN BY:	CBG
DRAWN BY:	CMT
CHECKED BY:	<i>RW</i>
APPROVED BY:	<i>RW</i>
DATE:	1/12/2007
JOB No:	06085-03-00
ILLINOIS PROJECT	BMI-3653
A.I.P. PROJECT	3-17-0006-47
SHEET 20 OF 26 SHEETS	