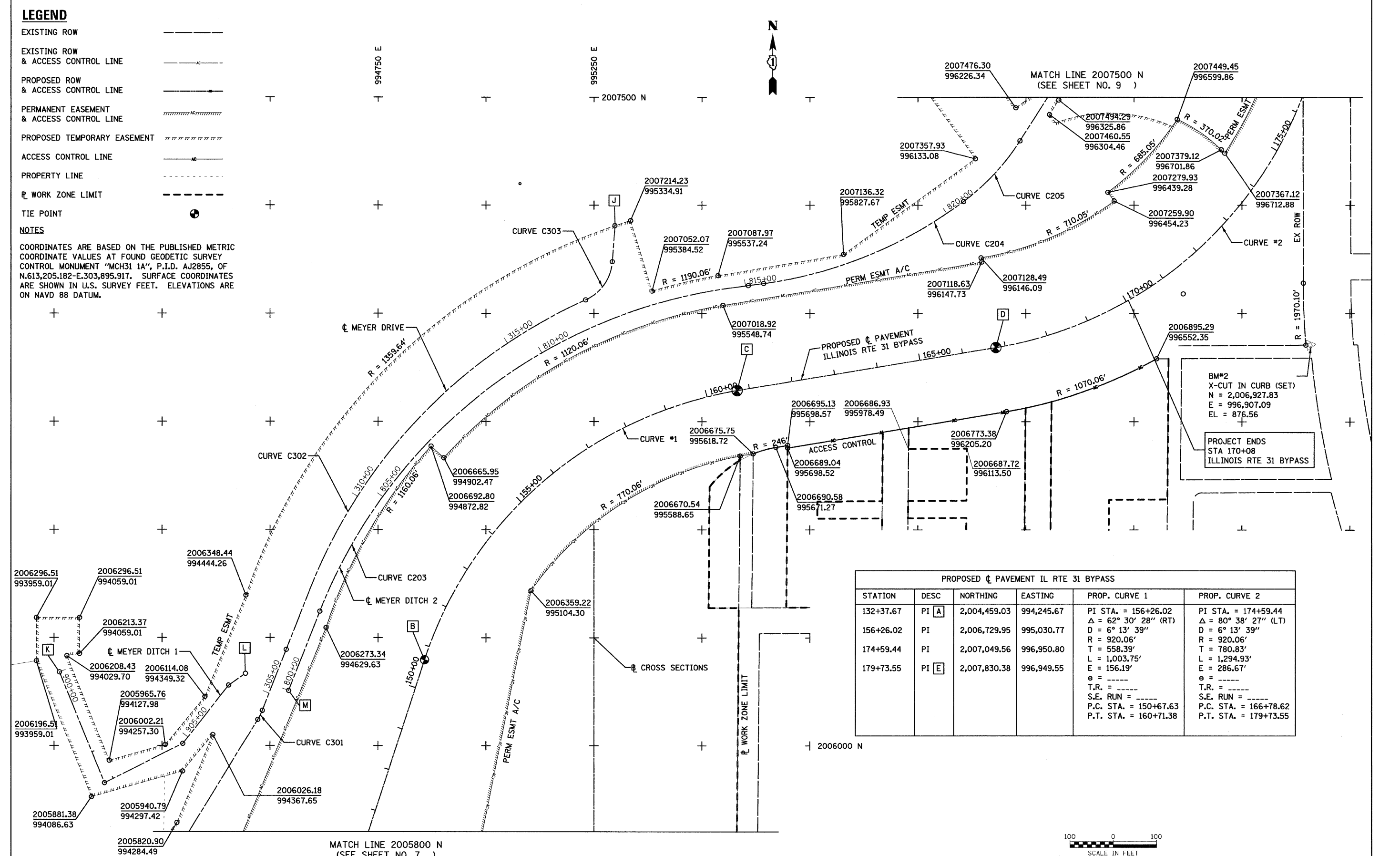


LEGEND

- EXISTING ROW
- EXISTING ROW & ACCESS CONTROL LINE
- PROPOSED ROW & ACCESS CONTROL LINE
- PERMANENT EASEMENT & ACCESS CONTROL LINE
- PROPOSED TEMPORARY EASEMENT
- ACCESS CONTROL LINE
- PROPERTY LINE
- WORK ZONE LIMIT
- TIE POINT +

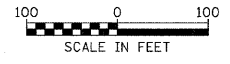
NOTES
 COORDINATES ARE BASED ON THE PUBLISHED METRIC COORDINATE VALUES AT FOUND GEODETIC SURVEY CONTROL MONUMENT "MCH31 1A", P.I.D. AJ2855, OF N.613,205.182-E.303,895.917. SURFACE COORDINATES ARE SHOWN IN U.S. SURVEY FEET. ELEVATIONS ARE ON NAVD 88 DATUM.



BM#2
 X-CUT IN CURB (SET)
 N = 2,006,927.83
 E = 996,907.09
 EL = 876.56

PROJECT ENDS
 STA 170+08
 ILLINOIS RTE 31 BYPASS

PROPOSED PAVEMENT IL RTE 31 BYPASS					
STATION	DESC	NORTHING	EASTING	PROP. CURVE 1	PROP. CURVE 2
132+37.67	PI [A]	2,004,459.03	994,245.67	PI STA. = 156+26.02 Δ = 62° 30' 28" (RT) D = 6° 13' 39" R = 920.06'	PI STA. = 174+59.44 Δ = 80° 38' 27" (LT) D = 6° 13' 39" R = 920.06'
156+26.02	PI	2,006,729.95	995,030.77	T = 558.39' L = 1,003.75'	T = 780.83' L = 1,294.93'
174+59.44	PI	2,007,049.56	996,950.80	E = 156.19'	E = 286.67'
179+73.55	PI [E]	2,007,830.38	996,949.55	e = ---- T.R. = ---- S.E. RUN = ---- P.C. STA. = 150+67.63 P.T. STA. = 160+71.38	e = ---- T.R. = ---- S.E. RUN = ---- P.C. STA. = 166+78.62 P.T. STA. = 179+73.55



FILE NAME = ...\\D160F78-sh1-AT8-02.dgn

USER NAME = ctb
 PLOT SCALE = 1/200000 1" = 100'
 PLOT DATE = 1/27/2012

DESIGNED - PML	REVISED -
DRAWN - PML	REVISED -
CHECKED - GAB	REVISED -
DATE - 1/20/2012	REVISED -

**STATE OF ILLINOIS
 DEPARTMENT OF TRANSPORTATION**

ALIGNMENT, TIES & BENCHMARKS

SCALE: 1" = 100' SHEET NO. 2 OF 3 SHEETS STA. 133+24.31 TO STA. 155+00.00

F.A. RTE.	SECTION	COUNTY	TOTAL SHEETS	SHEET NO.
	18A-1	McHENRY	115	8
CONTRACT NO. 60F78				
FED. ROAD DIST. NO. ILLINOIS FED. AID PROJECT				