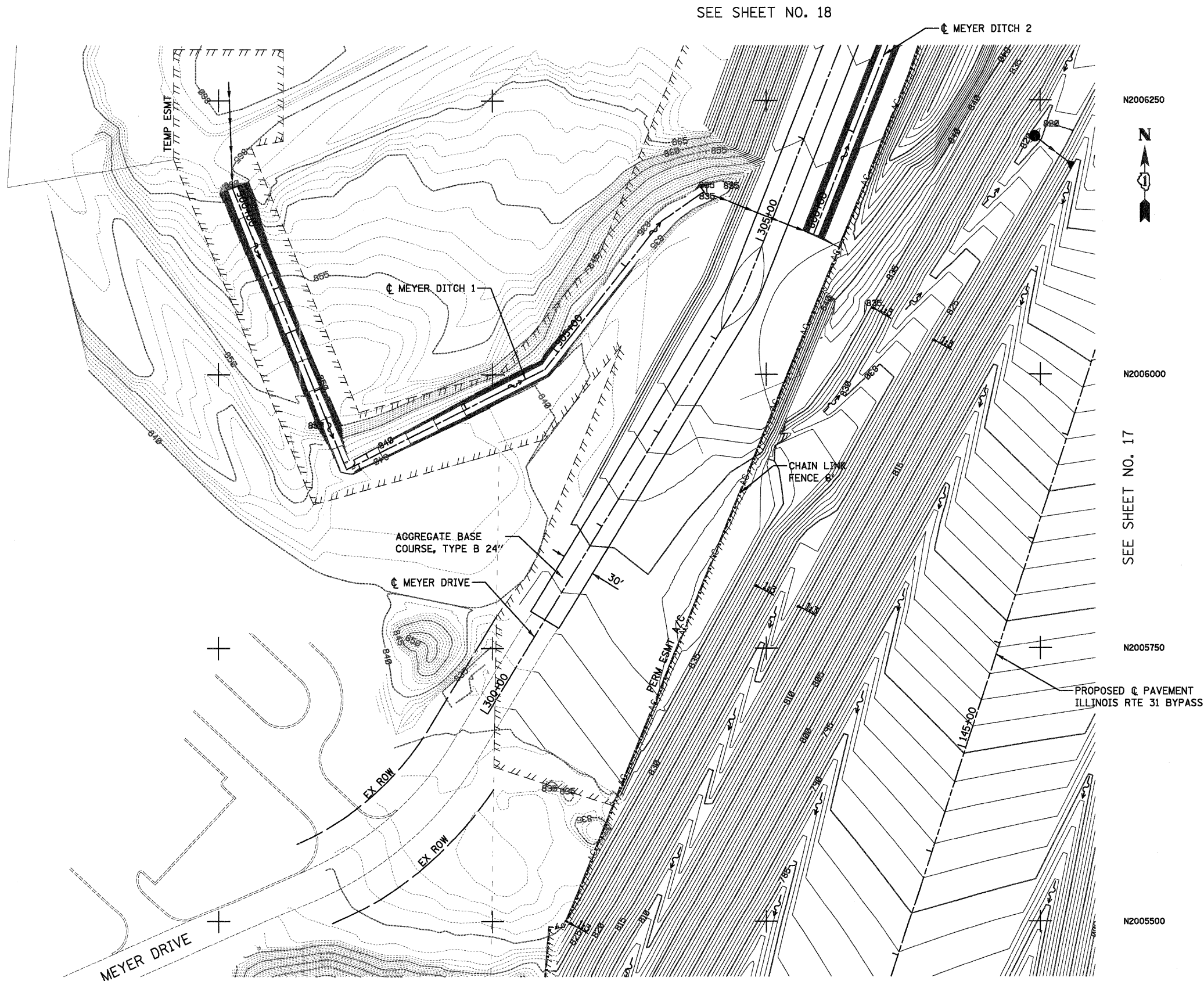


LEGEND

- PROP CONTOURS (INTERVAL AT 5')
- PROP CONTOURS (INTERVAL AT 1')
- EX CONTOURS (INTERVAL AT 5')
- EX CONTOURS (INTERVAL AT 1')
- DRAINAGE DITCH

NOTES

- 1) SEE DRAINAGE STRUCTURE AND PIPE INFORMATION ON SHEETS 38 TO 47.
- 2) CHAIN LINK FENCE, 6' SHALL BE CONSTRUCTED UPON COMPLETION OF THE PROJECT 1' OFF ROW LOCATIONS SHOWN ON PLANS.



SEE SHEET NO. 18



N2006000

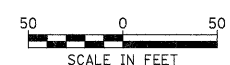
SEE SHEET NO. 17

N2005750

PROPOSED C PAVEMENT ILLINOIS RTE 31 BYPASS

N2005500

SEE SHEET NO. 14



| | | | | | | | | | | | |
|---|-----------------|------------------------------|------------------|---|---------------------|---------------------------|---------|--------------------------|--------------|--------------|----|
| FILE NAME = ...\\D16078-sht-grading-05.dgn | USER NAME = ctb | DESIGNED - KWH | REVISED - | STATE OF ILLINOIS DEPARTMENT OF TRANSPORTATION | GRADING PLAN | F.A. RTE. | SECTION | COUNTY | TOTAL SHEETS | SHEET NO. | |
| | | DRAWN - JES | REVISED - | | | | | 18A-1 | McHENRY | 115 | 16 |
| | | CHECKED - GAB | REVISED - | | | SCALE: 1" = 50' | | SHEET NO. 5 OF 10 SHEETS | | STA. TO STA. | |
| | | PLOT SCALE = 600.0000' / Ft. | CHECKED - | | | ILLINOIS FED. AID PROJECT | | | | | |
| | | PLOT DATE = 1/18/2012 | DATE - 1/20/2012 | | | | | | | | |