

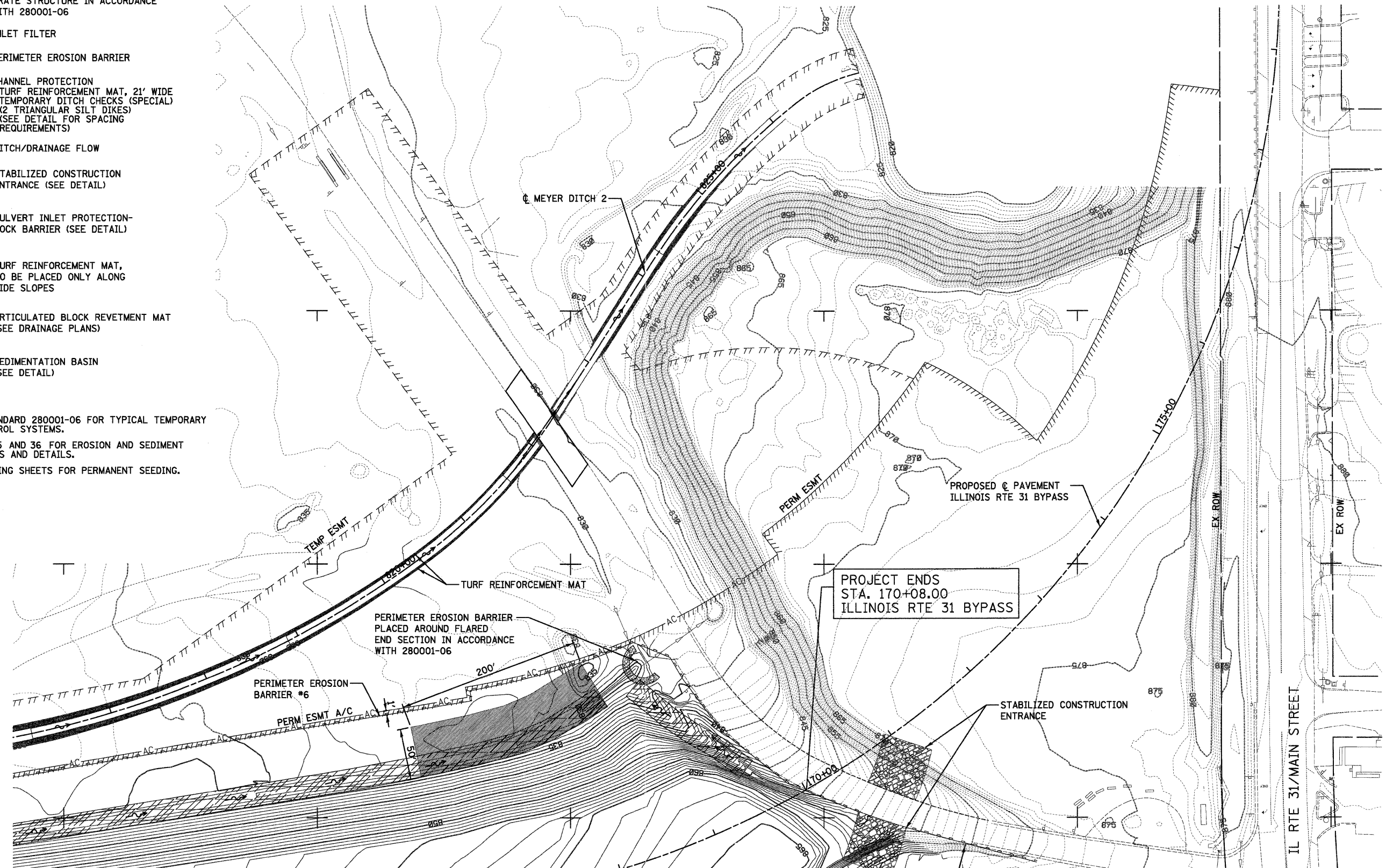
LEGEND

- ☒ INLET FILTER AND PERIMETER EROSION BARRIER PLACED AROUND OPEN GRATE STRUCTURE IN ACCORDANCE WITH 280001-06
- ⊗ INLET FILTER
- PERIMETER EROSION BARRIER
- ▨ CHANNEL PROTECTION -TURF REINFORCEMENT MAT, 21' WIDE -TEMPORARY DITCH CHECKS (SPECIAL) (2 TRIANGULAR SILT DIKES) (SEE DETAIL FOR SPACING REQUIREMENTS)
- ~ DITCH/DRAINAGE FLOW
- ▩ STABILIZED CONSTRUCTION ENTRANCE (SEE DETAIL)
- ⤴ CULVERT INLET PROTECTION-ROCK BARRIER (SEE DETAIL)
- ▧ TURF REINFORCEMENT MAT, TO BE PLACED ONLY ALONG SIDE SLOPES
- ▦ ARTICULATED BLOCK REVETMENT MAT (SEE DRAINAGE PLANS)
- SEDIMENTATION BASIN (SEE DETAIL)

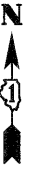
NOTES

1. USE IDOT STANDARD 280001-06 FOR TYPICAL TEMPORARY EROSION CONTROL SYSTEMS.
2. SEE SHEETS 25 AND 36 FOR EROSION AND SEDIMENT CONTROL NOTES AND DETAILS.
3. SEE LANDSCAPING SHEETS FOR PERMANENT SEEDING.

SEE SHEET NO. 34



N2007750



N2007500

N2007250

N2007000

IL RTE 31/MAIN STREET

PROJECT ENDS
STA. 170+08.00
ILLINOIS RTE 31 BYPASS

SEE SHEET NO. 33



FILE NAME =
...\\D168F78-sh-t-eros-10.dgn

USER NAME = ctb
DESIGNED - DTE
DRAWN - DTE
PLOT SCALE = 600.0000' / ft.
PLOT DATE = 1/20/2012

REVISOR -
REVISION -
CHECKED - GAB
DATE - 1/20/2012

**STATE OF ILLINOIS
DEPARTMENT OF TRANSPORTATION**

EROSION AND SEDIMENT CONTROL PLANS

SCALE: 1" = 50' SHEET NO. 11 OF 12 SHEETS STA. TO STA.

F.A. RTE.	SECTION	COUNTY	TOTAL SHEETS	SHEET NO.
	18A-1	McHENRY	115	35
CONTRACT NO. 60F78				
ILLINOIS FED. AID PROJECT				