

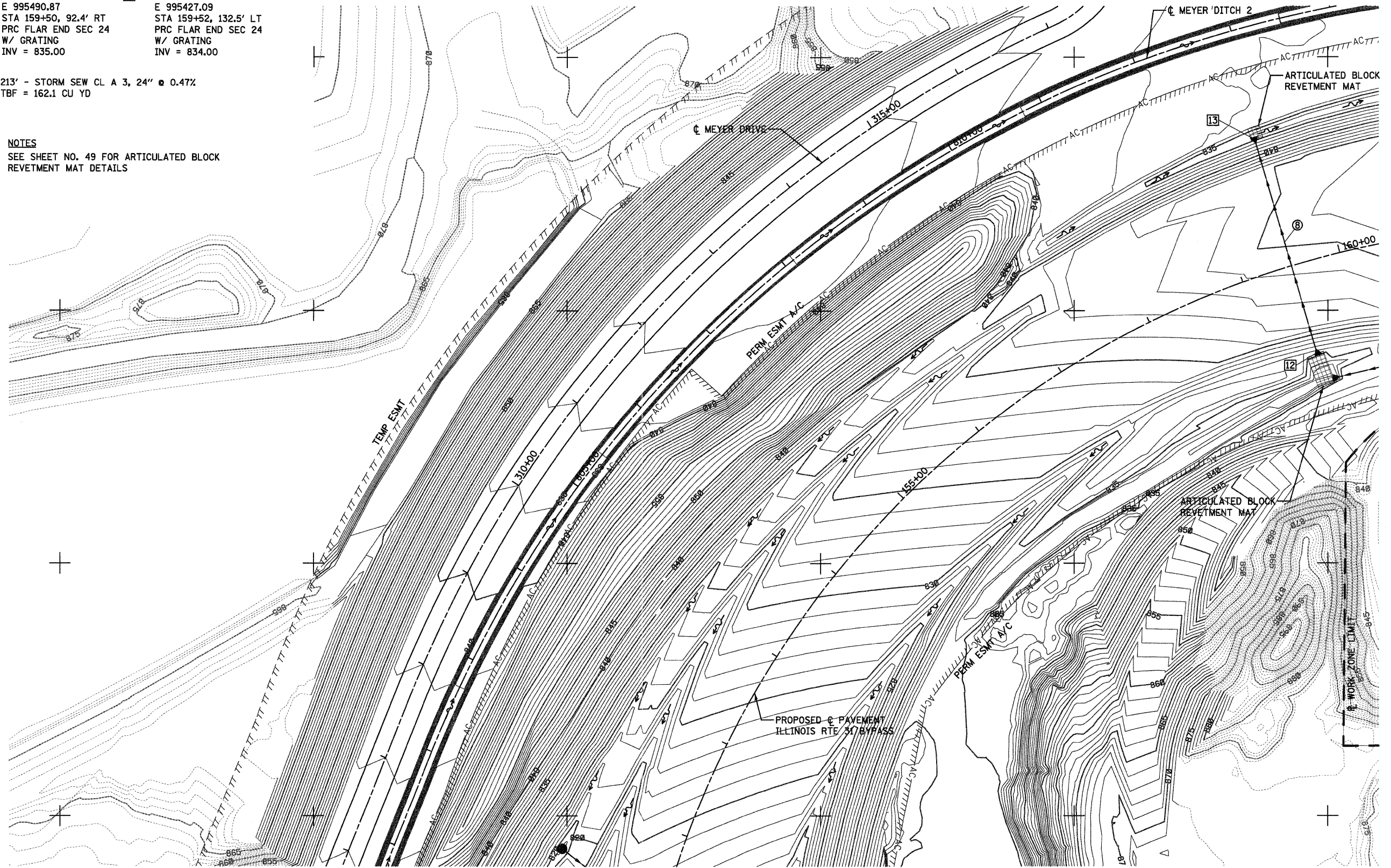
SEE SHEET NO. 46

12 N 2006705.66
 E 995490.87
 STA 159+50, 92.4' RT
 PRC FLAR END SEC 24
 W/ GRATING
 INV = 835.00

13 N 2006921.25
 E 995427.09
 STA 159+52, 132.5' LT
 PRC FLAR END SEC 24
 W/ GRATING
 INV = 834.00

8 213' - STORM SEW CL A 3, 24" @ 0.47%
 TBF = 162.1 CU YD

NOTES
 SEE SHEET NO. 49 FOR ARTICULATED BLOCK
 REVETMENT MAT DETAILS



N2007000

N2006750

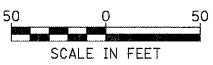
N2006500

N2006250

SEE SHEET NO. 45



SEE SHEET NO. 42



FILE NAME = ...\\D160F78-shd-drain-07.dgn	USER NAME = ctb	DESIGNED - DTE	REVISED -	STATE OF ILLINOIS DEPARTMENT OF TRANSPORTATION	DRAINAGE PLAN		F.A. RTE.	SECTION	COUNTY	TOTAL SHEETS	SHEET NO.	
		DRAWN - DTE	REVISED -		SCALE: 1" = 50'	SHEET NO. 8 OF 13 SHEETS	STA.	TO STA.	18A-1	McHENRY	115	44
		CHECKED - GAB	REVISED -		CONTRACT NO. 60F78							
		DATE - 1/20/2012	REVISED -		ILLINOIS FED. AID PROJECT							