

18 N 2007342.24  
E 996194.19  
PIPE CULVERT INLET  
INV = 826.96

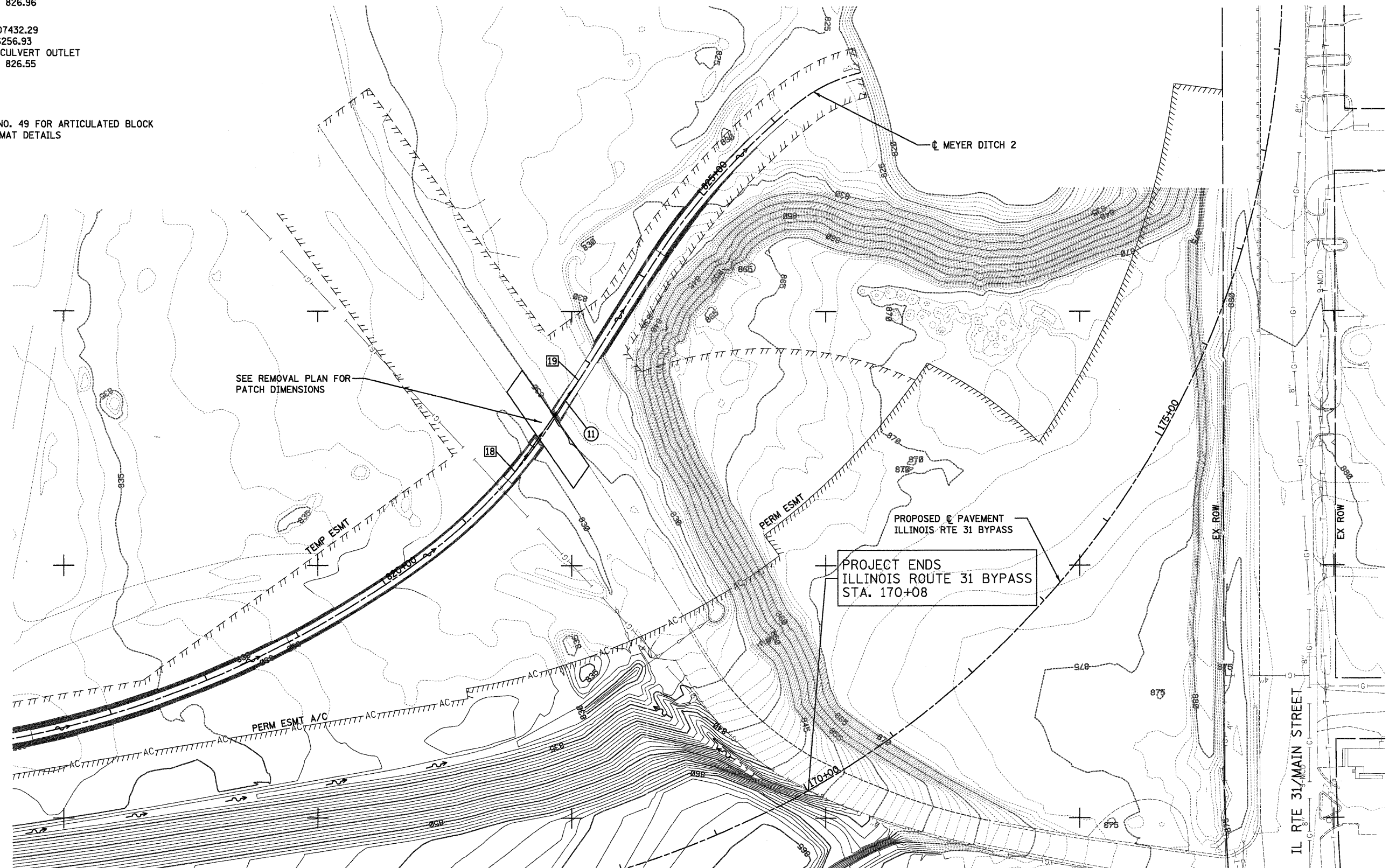
11 110' - P CUL CL A 1 48 @ 0.37%  
TBF = 0.5 CU YD

19 N 2007432.29  
E 996256.93  
PIPE CULVERT OUTLET  
INV = 826.55

**NOTES**

SEE SHEET NO. 49 FOR ARTICULATED BLOCK  
REVETMENT MAT DETAILS

SEE SHEET NO. 46



E995750

E996000

E996250

E996500

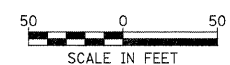
E996750

E997000

SEE SHEET NO. 45

N2007250

N2007000



FILE NAME =  
...\\D168F7B-shr-dra-n-18.dgn

USER NAME = ctb	DESIGNED - DTE	REVISED -
PLOT SCALE = 600.0000' / Ft.	DRAWN - DTE	REVISED -
PLOT DATE = 1/18/2012	CHECKED - GAB	REVISED -
	DATE - 1/20/2012	REVISED -

**STATE OF ILLINOIS  
DEPARTMENT OF TRANSPORTATION**

**DRAINAGE PLAN**

SCALE: 1" = 50' SHEET NO. 11 OF 13 SHEETS STA. TO STA.

F.A. RTE.	SECTION	COUNTY	TOTAL SHEETS	SHEET NO.
	18A-1	McHENRY	115	47
CONTRACT NO. 60F78			ILLINOIS FED. AID PROJECT	