

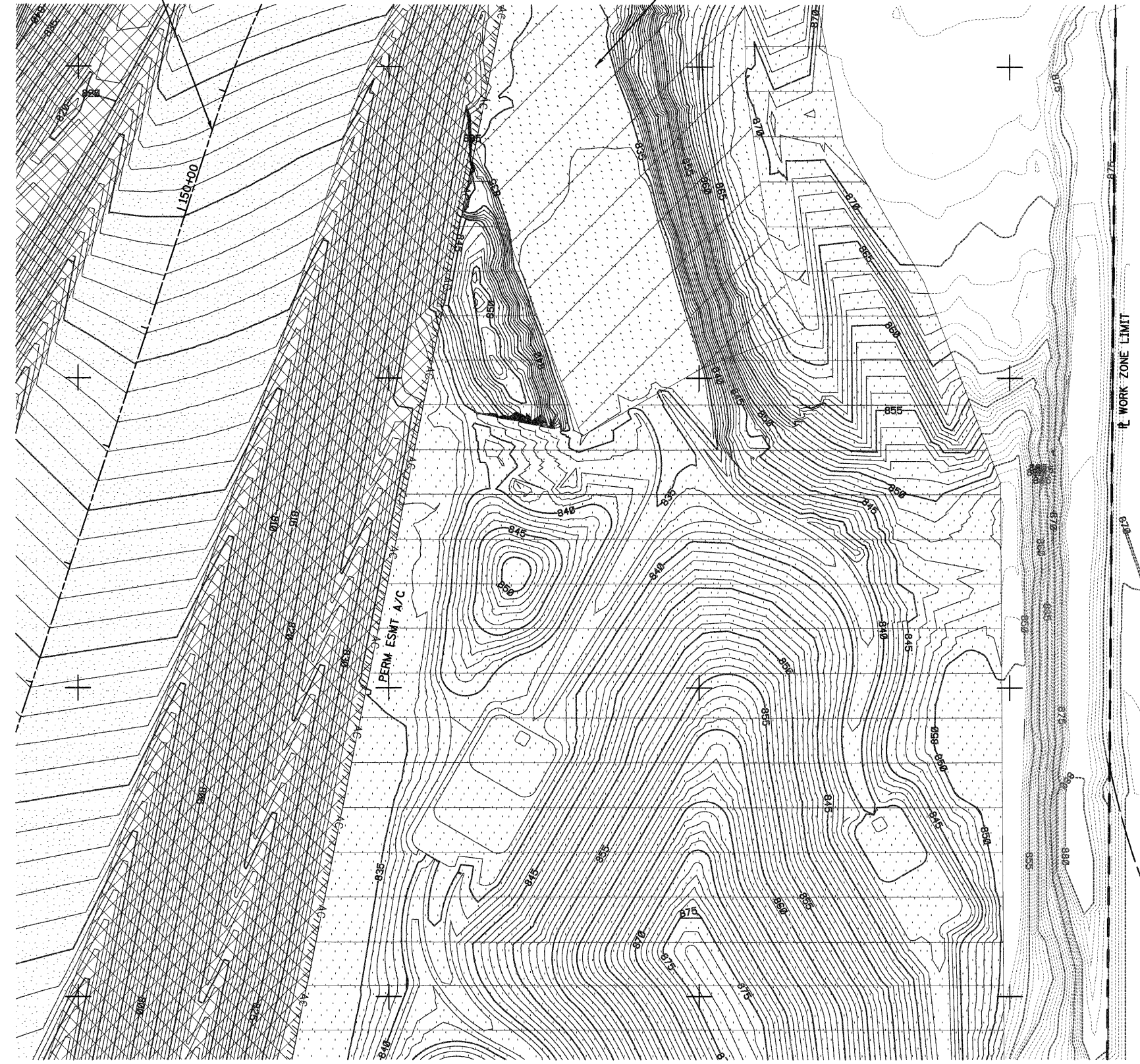
PROPOSED PAVEMENT
ILLINOIS RTE 31 BYPASS

SEE SHEET NO. 66


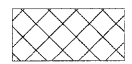
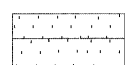
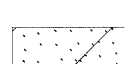
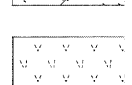
SEEDING, CLASS 4B (MODIFIED)
TOPSOIL FURNISH AND PLACE, 4"

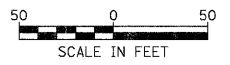
ARROWHEAD DRIVE

SEE SHEET NO. 63



LEGEND

-  SEEDING, CLASS 2
-  SEEDING, CLASS 3
TOPSOIL FURNISH AND PLACE, 4"
-  SEEDING, CLASS 4
-  SEEDING, CLASS 4B (MODIFIED)
-  TEMPORARY EROSION CONTROL SEEDING



SEE SHEET NO. 62

FILE NAME =
...\\D162F78-shr-landsap\86.dgn

USER NAME = ctb	DESIGNED - CTB	REVISED -
PLOT SCALE = 600.0000' / Ft.	DRAWN - JES	REVISED -
PLOT DATE = 1/18/2012	CHECKED - GAB	REVISED -
	DATE - 1/20/2012	REVISED -

**STATE OF ILLINOIS
DEPARTMENT OF TRANSPORTATION**

LANDSCAPING PLAN

SCALE: 1" = 50' SHEET NO. 6 OF 10 SHEETS STA. TO STA.

F.A. RTE.	SECTION	COUNTY	TOTAL SHEETS	SHEET NO.
	18A-1	McHENRY	115	64
			CONTRACT NO. 60F78	
ILLINOIS FED. AID PROJECT				